

SHOP DRAWING REVIEW

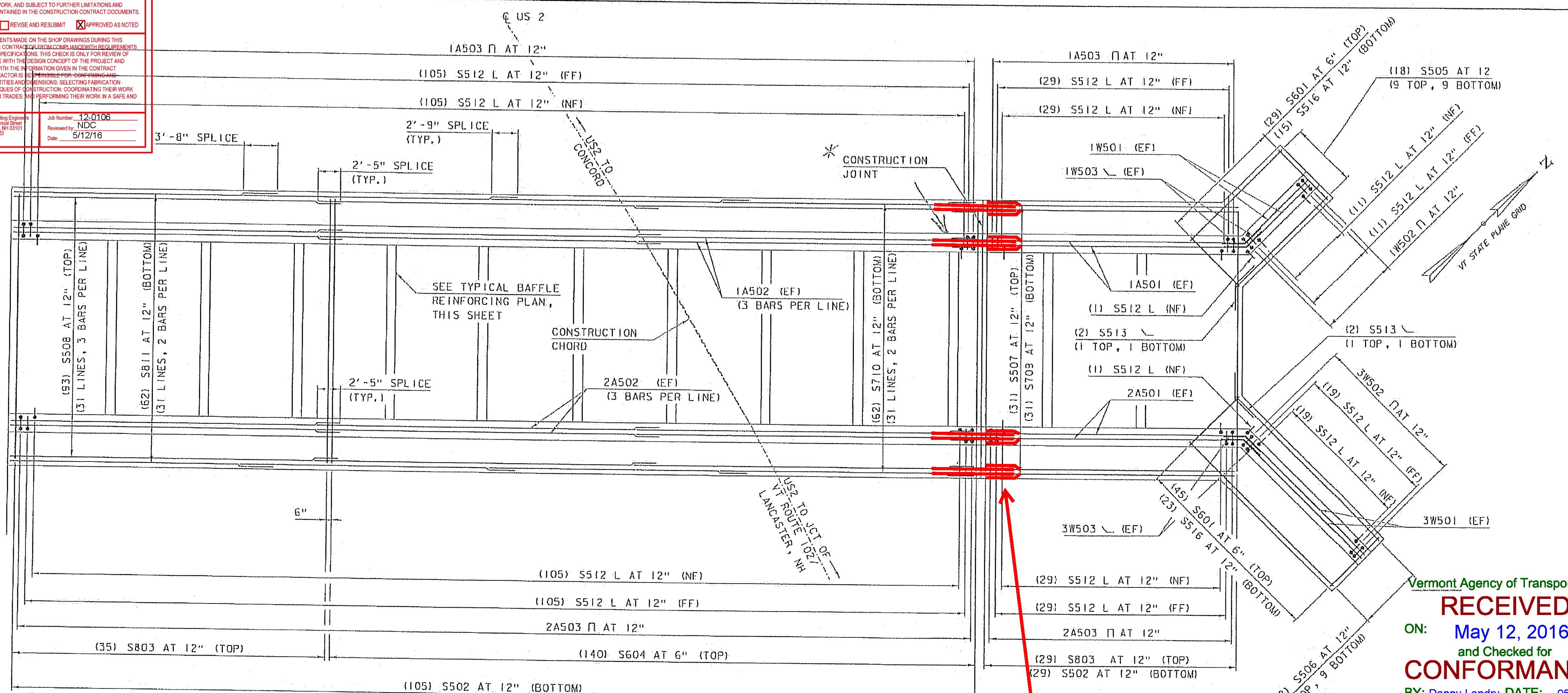
REVIEWED AS REQUIRED BY THE CONSTRUCTION CONTRACT DOCUMENTS AND APPROVED, BUT ONLY FOR CONFORMANCE TO THE DESIGN CONCEPT OF THE WORK AND SUBJECT TO FURTHER LIMITATIONS AND REQUIREMENTS CONTAINED IN THE CONSTRUCTION CONTRACT DOCUMENTS.

REJECTED REVISE AND RESUBMIT APPROVED AS NOTED

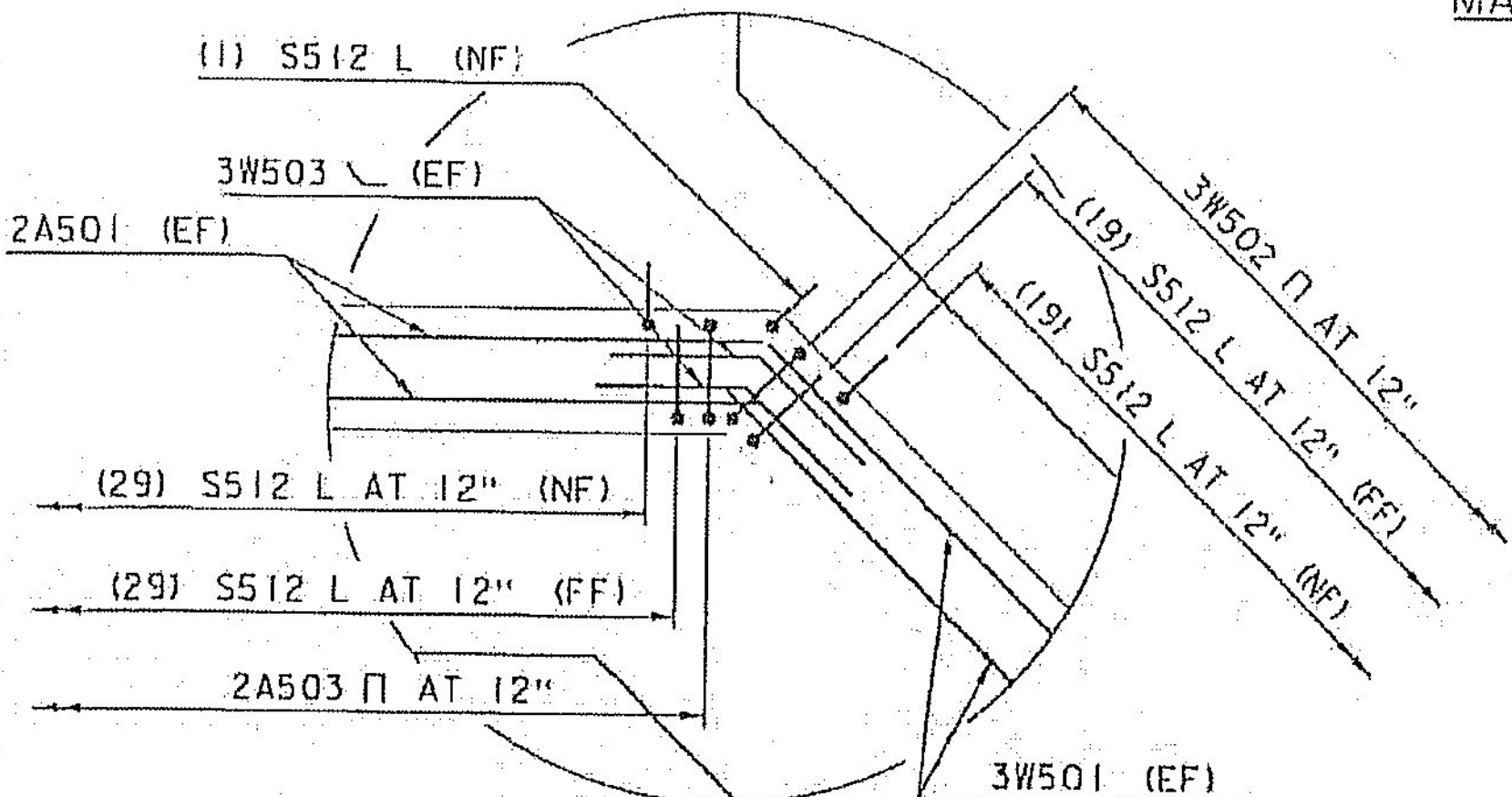
CORRECTIONS OR COMMENTS MADE ON THE SHOP DRAWINGS DURING THIS REVIEW DID NOT REVEAL CONTRACT DOCUMENT REQUIREMENTS OF THE DRAWINGS AND SPECIFICATIONS. THIS CHECK IS ONLY FOR REVIEW OF GENERAL CONFORMANCE WITH THE DESIGN CONCEPT OF THE PROJECT AND GENERAL COMPLIANCE WITH THE INFORMATION GIVEN IN THE CONTRACT DOCUMENTS. THE CONTRACTOR IS RESPONSIBLE FOR OBTAINING ALL CORRELATING ALL QUANTITIES AND DIMENSIONS, SELECTING FABRICATION PROCESSES AND TECHNIQUES OF CONSTRUCTION, COORDINATING THEIR WORK WITH THAT OF ALL OTHER TRADES AND PERFORMING THEIR WORK IN A SAFE AND SATISFACTORY MANNER.

CLD Consulting Engineers
240 Commercial Street
Manchester, NH 03101
603-459-8223

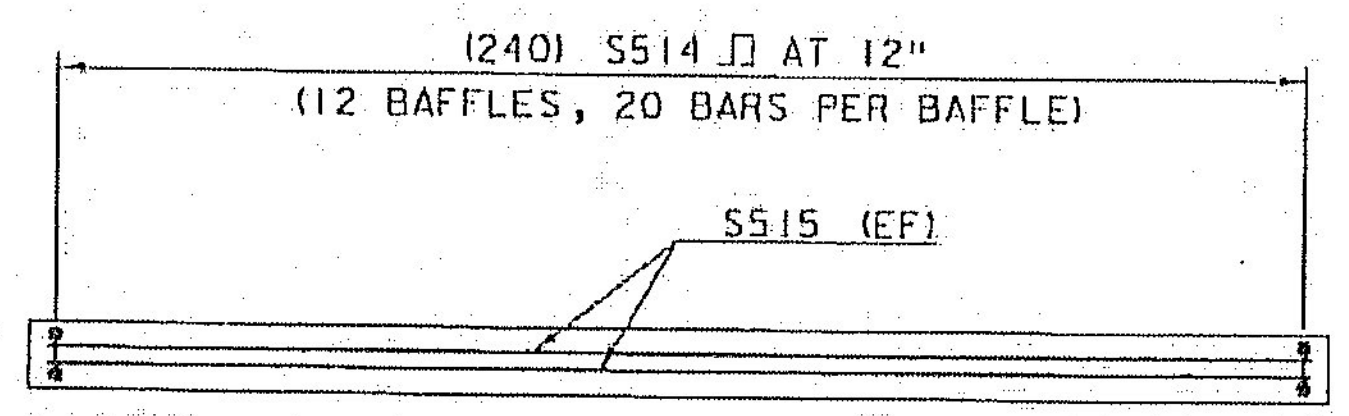
Job Number: 12-0106
Reviewed by: NDC
Date: 5/12/16



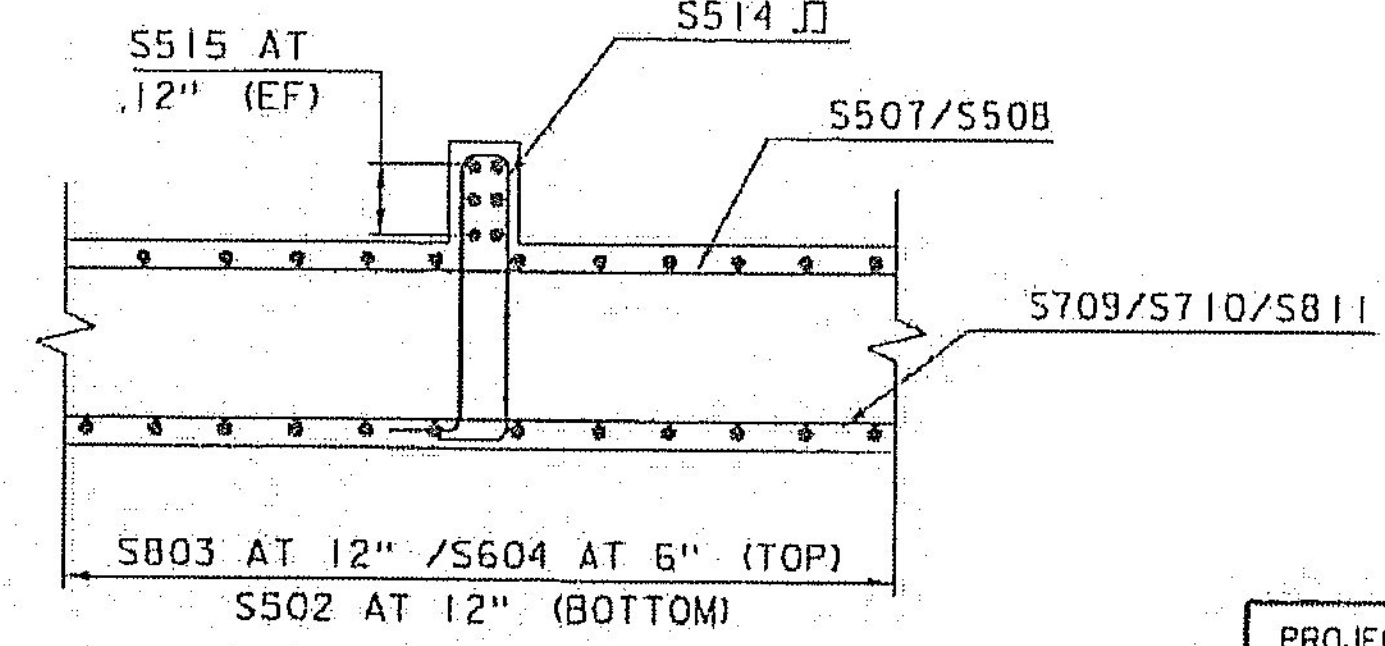
MAT FOUNDATION AND PEDESTAL WALL REINFORCING PLAN
SCALE: 3/16" = 1'-0"



TYPICAL PEDESTAL WALL CORNER REINFORCING SECTION
(THE CORNER SHOWN, NW CORNER SIMILAR)
SCALE: 3/4" = 1'-0"



TYPICAL BAFFLE REINFORCING PLAN
SCALE: 3/8" = 1'-0"



TYPICAL BAFFLE REINFORCING SECTION
SCALE: 3/8" = 1'-0"

Correct, Contractor please note that rebar splice should be in Phase II pour.

*Construction Joint: Rebar overlap at construction joint is shown on wrong side of joint. See revised rebar schedule for adjusted bar lengths.

- NF = NEAR FACE
- FF = FAR FACE
- EF = EACH FACE
- 3" CLEAR IN MAT FOUNDATION,
- 2" CLEAR AT ALL OTHER LOCATIONS.
- 2'-5" BAR LAP UNLESS OTHERWISE SPECIFIED ON THE PLANS

Vermont Agency of Transportation
RECEIVED
ON: May 12, 2016
and Checked for
CONFORMANCE
BY: Danny Landry DATE: 05/18/16

PROJECT NAME: LUNENBURG	PLOT DATE: 8/6/2015
PROJECT NUMBER: NH CULV(27)	DRAWN BY: M. SMITH
FILE NAME: 11b294/cos/z11b294sub.dgn	DESIGNED BY: S. BEAUMONT
PROJECT LEADER: J. BYATT	CHECKED BY: N. CARON
SUBSTRUCTURE REINFORCING SHEET 1	SHEET 47 OF 74



CLD 12-0106 MODEL SHEET 09