

NOTE

REMOVAL OF EXISTING PAVEMENT MARKINGS AND APPLICATION OF TEMPORARY PAVEMENT MARKINGS, GUARDRAIL, ANCHORS, DELINEATORS AND DRIVE CONSTRUCTION AS NOTED ON THIS SHEET WILL BE INCLUDED UNDER PAY ITEM 900.645, "SPECIAL PROVISION (TEMPORARY ROADWAY)". NOTES ARE PROVIDED FOR INFORMATIONAL PURPOSES ONLY.

TEMPORARY 4 INCH WHITE LINE, PAINT
100+50 TO 104+96 SOLID LT & RT

TEMPORARY 4 INCH YELLOW LINE, PAINT
100+50 TO 101+95 SOLID LT & RT

TEMPORARY 24 INCH STOP BAR, PAINT
101+95 RT

STEEL BEAM GUARDRAIL, GALVANIZED

102+90.0 TO 104+40.0 LT
103+65.0 TO 104+40.0 RT

ANCHOR FOR STEEL BEAM RAIL

102+90.0 LT
103+65.0 RT

DELINEATOR WITH STEEL POST

102+90.0 LT
103+65.0 RT

CONSTRUCT DRIVES WITH 4 FOOT PAVED APRON

102+38 LT (18.4 FT WIDE, GRAVEL, RES.)

STA 424+25.00
BEGIN APPROACH

STA 424+50.00
END APPROACH
BEGIN PROJECT

DETOUR CURVE (1)
DELTA = 3°56' 49" LT
D = 22°55' 06"
R = 250.00'
T = 8.61'
L = 17.22'
E = 0.15'
BANK = -0.020

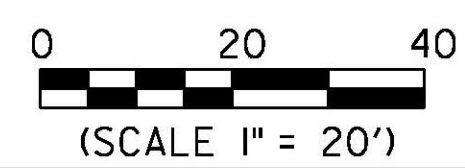
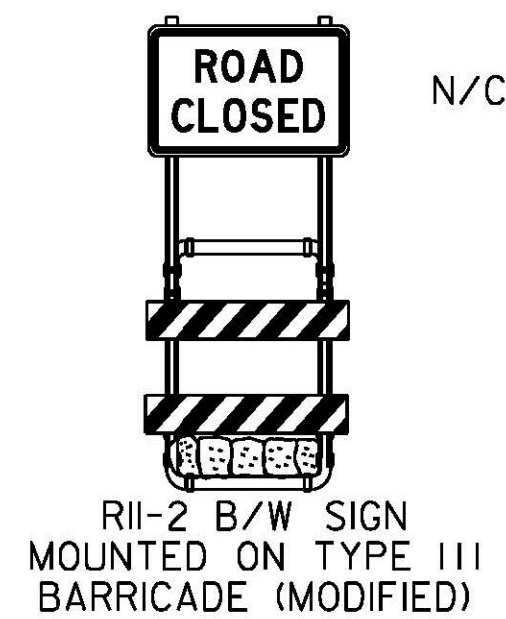
DETOUR STA 100+00.00=
US 2 STA 425+00.00

STA 100+50.00
BEGIN DETOUR

DETOUR CURVE (2)
DELTA = 33°36' 41" RT
D = 23°52' 24"
R = 240.00'
T = 72.49'
L = 140.79'
E = 10.71'
BANK = -0.020

LEGEND

- N/C NEW SIGN/CONSTRUCTION ONLY
- B/W BLACK/WHITE
- ☒ TYPE III BARRICADE
- ☒ TYPE III BARRICADE (MOD.)
- TEMPORARY TRAFFIC BARRIER
- ⊗ ENERGY ABSORPTION ATTENUATOR



PROJECT NAME: LUNENBURG
PROJECT NUMBER: NH CULV(27)

FILE NAME: llb294/cos/2llb294bdr+cppl.dgn PLOT DATE: 8/24/2015
PROJECT LEADER: J. BYATT DRAWN BY: M. HALEY
DESIGNED BY: M. HALEY CHECKED BY: P. SHEDD
PHASE I TRAFFIC CONTROL SHEET I SHEET 22 OF 74

CLD_12-0106_MODEL: LOI