

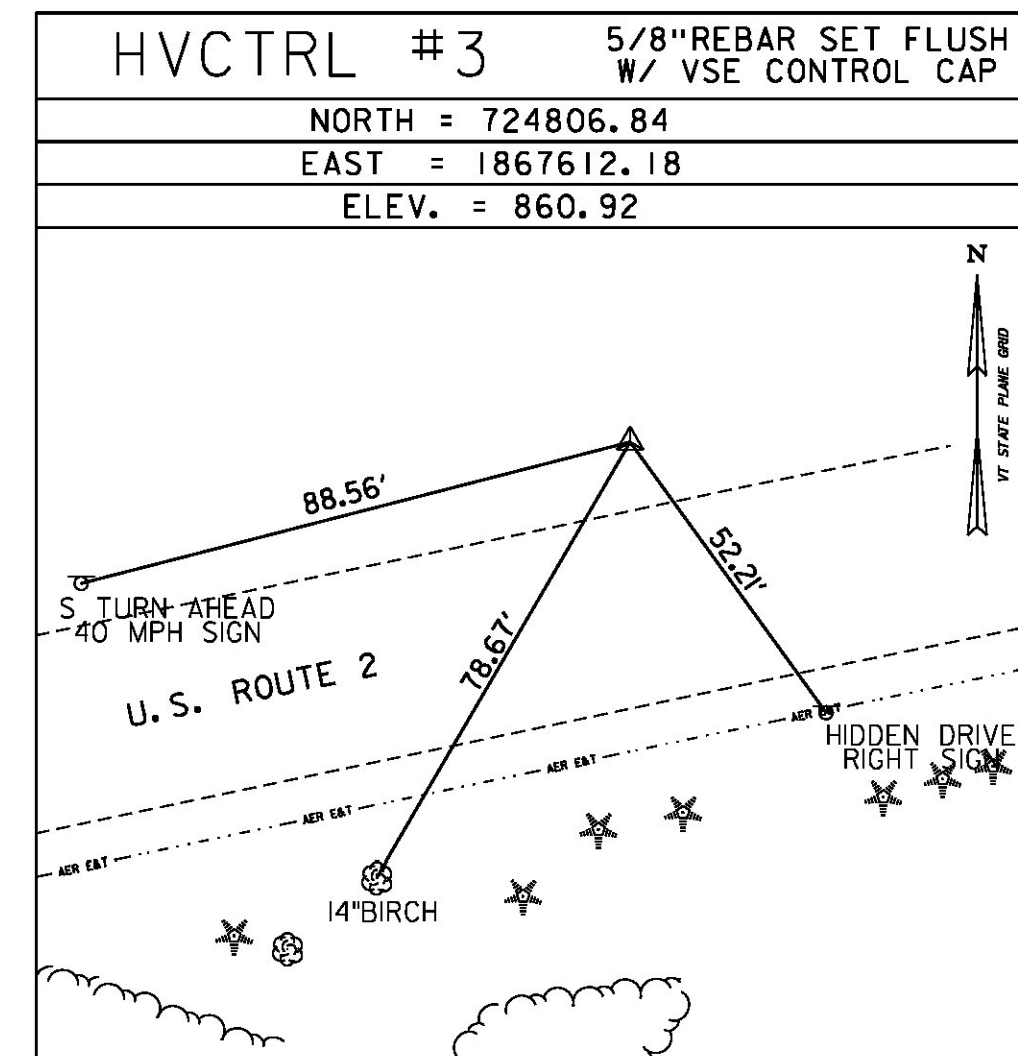
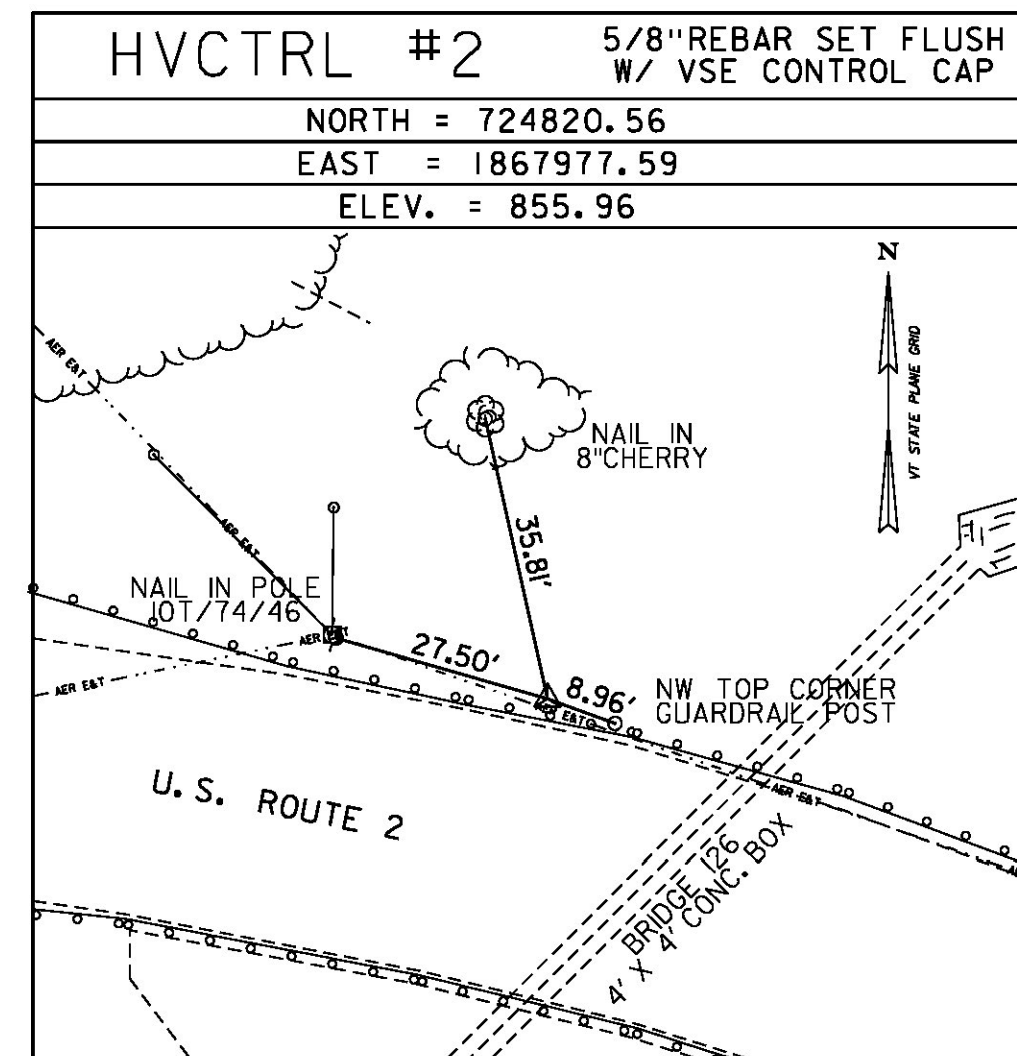
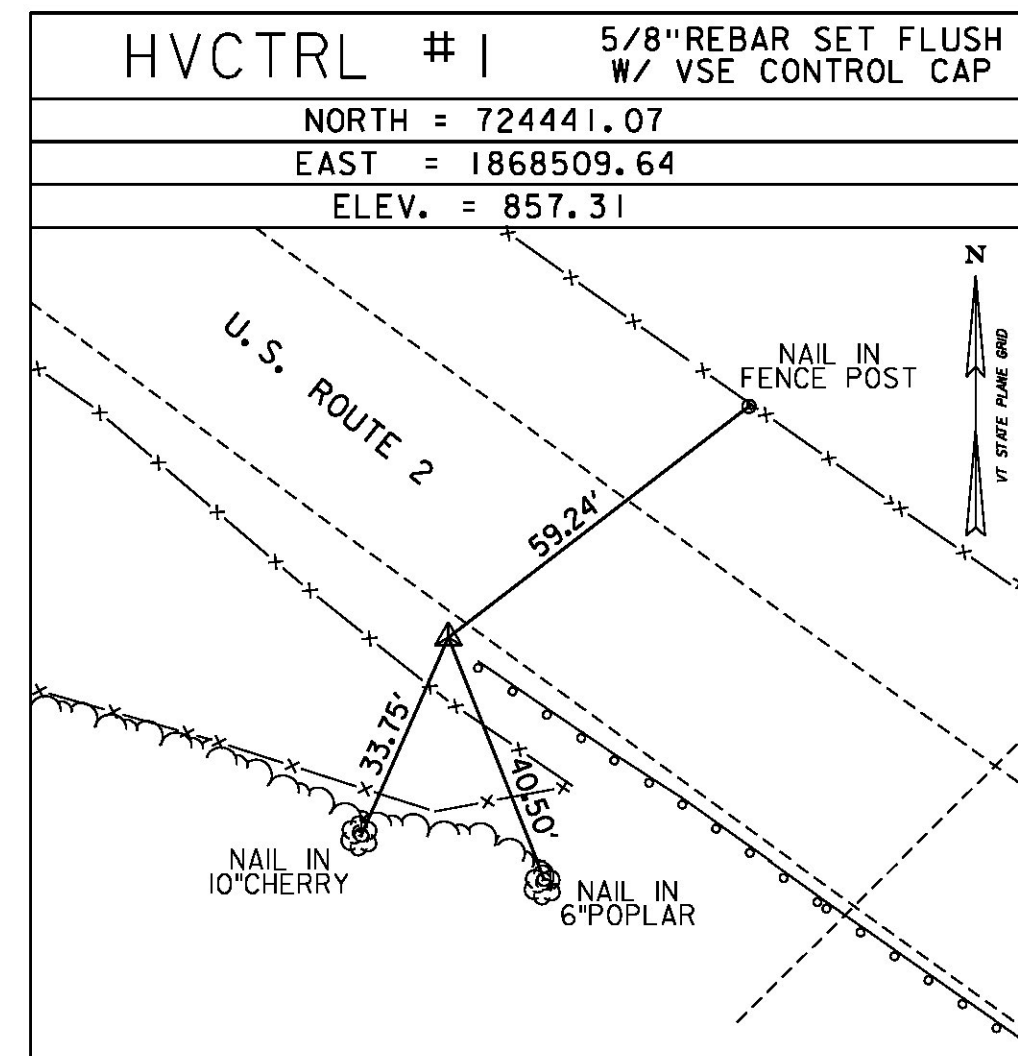
GPS/NGS CONTROL POINTS

SAINT JOHNSBURY CORS ARP

PID DK4107
 N = 692116.24
 E = 1764393.17
 ELLIP HEIGHT = 546.36

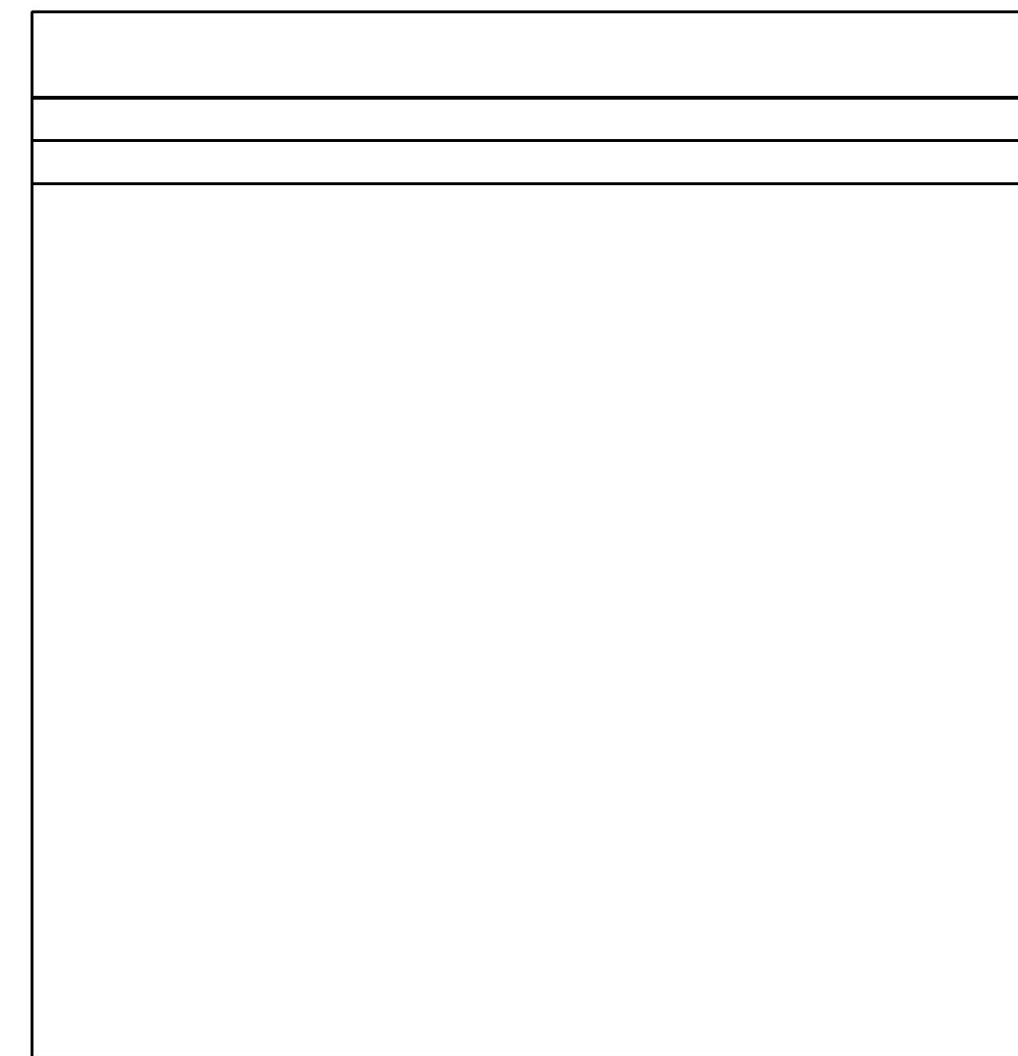
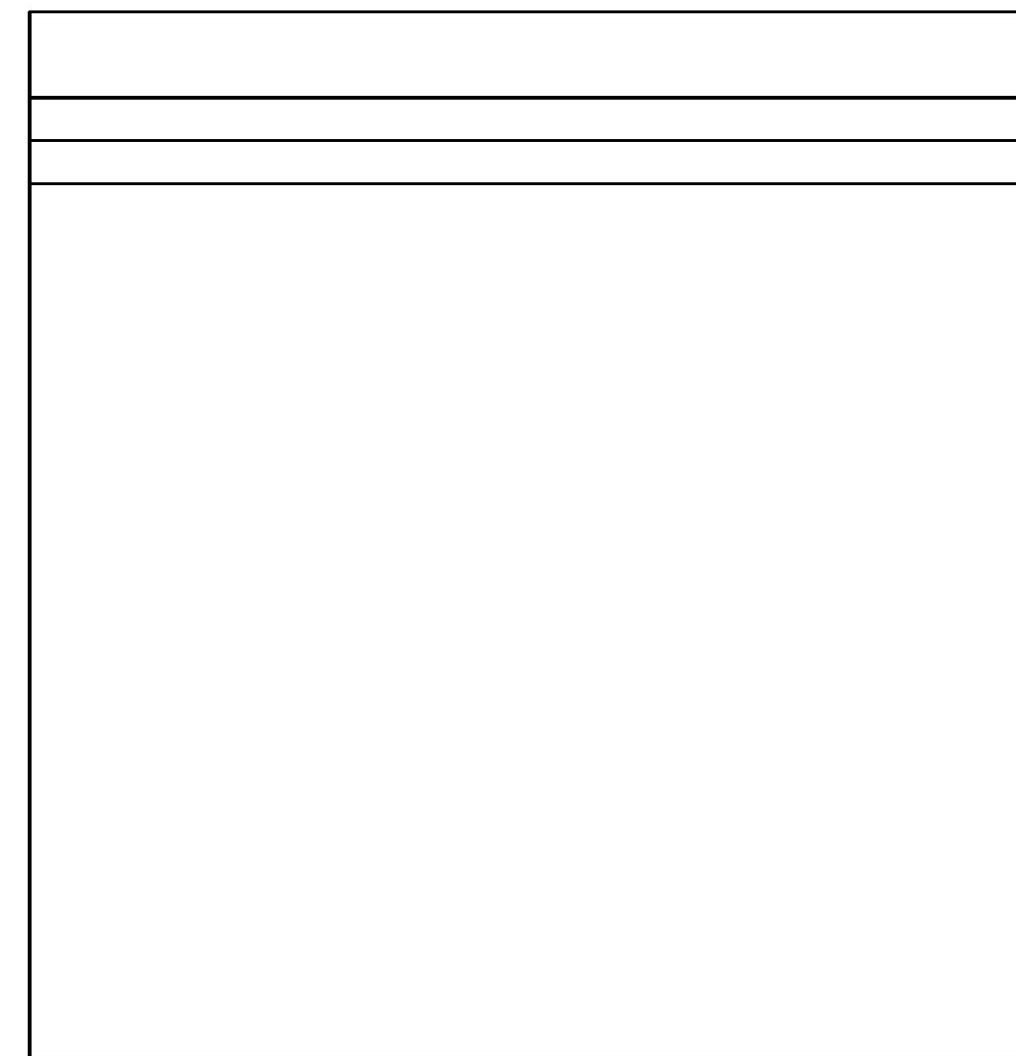
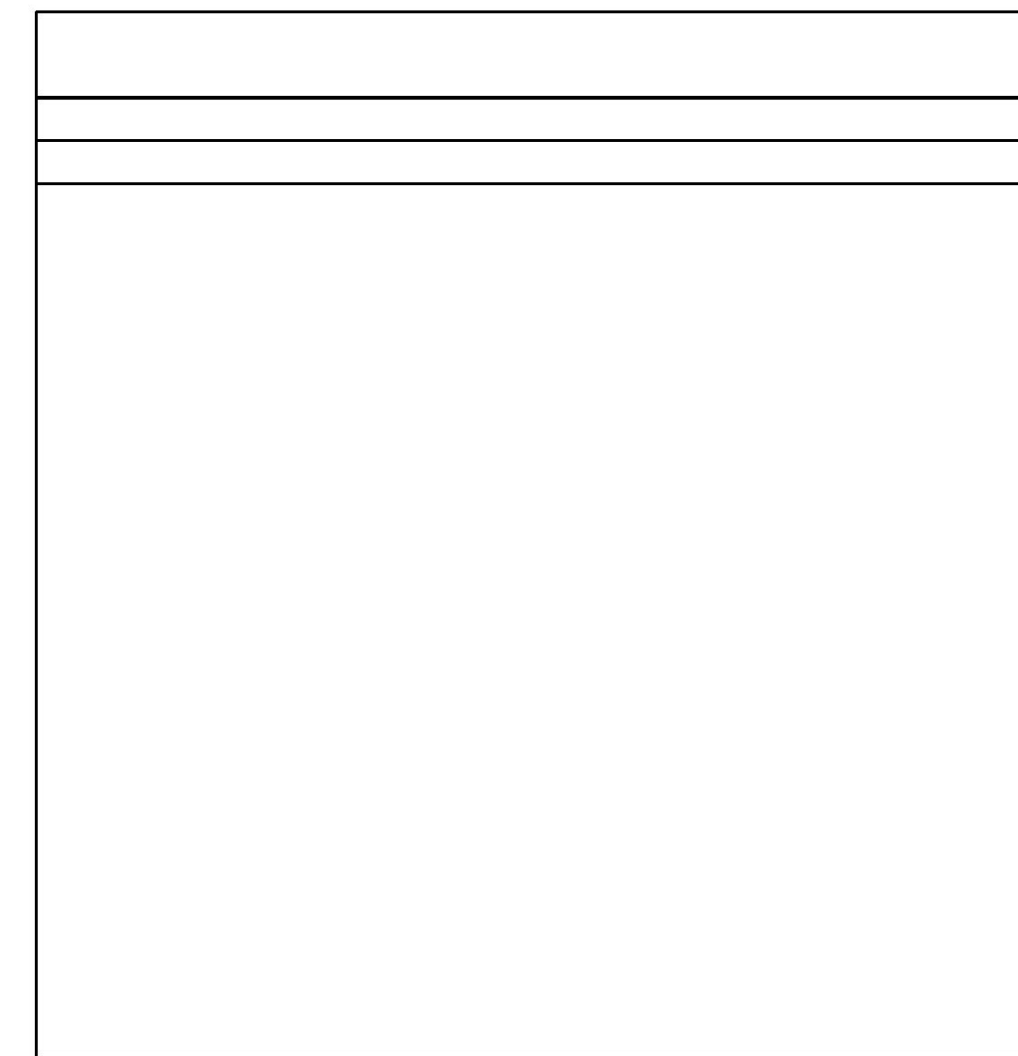
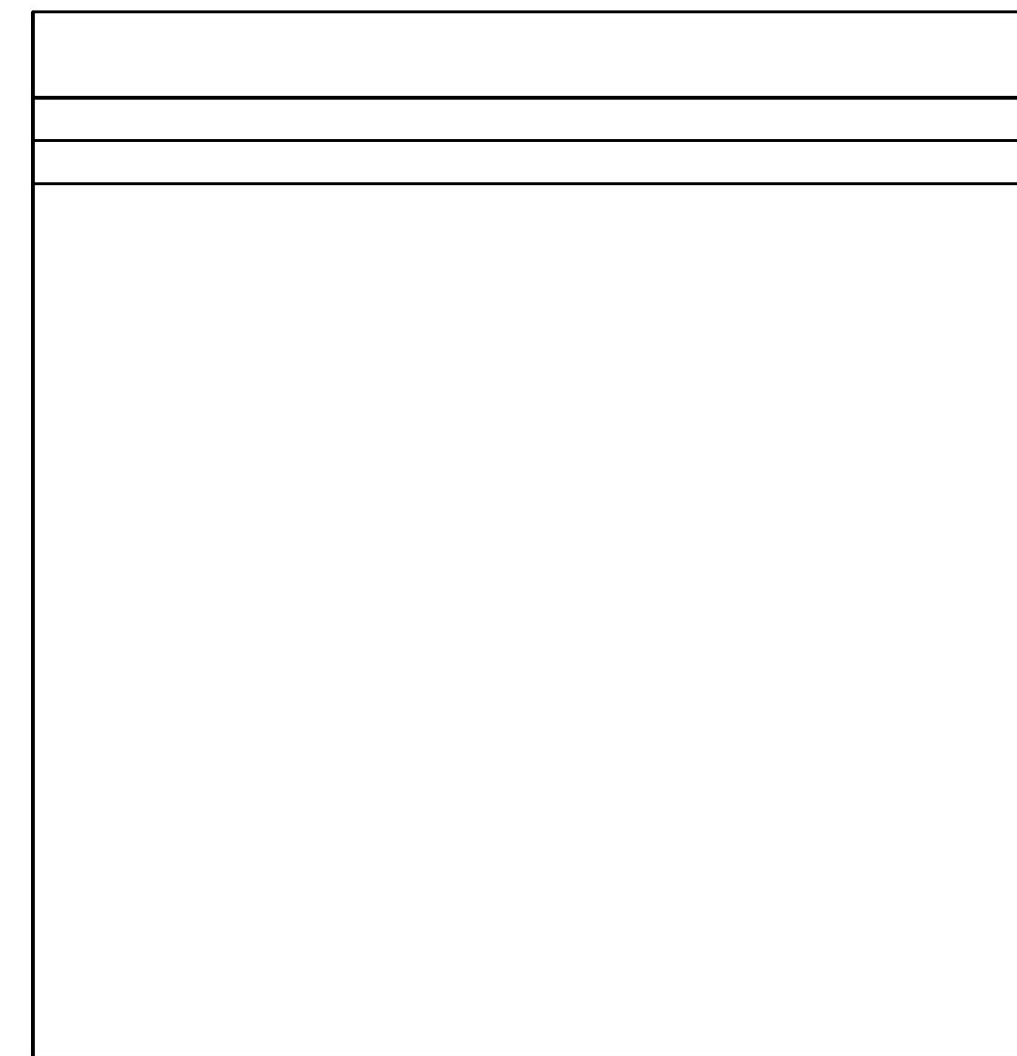
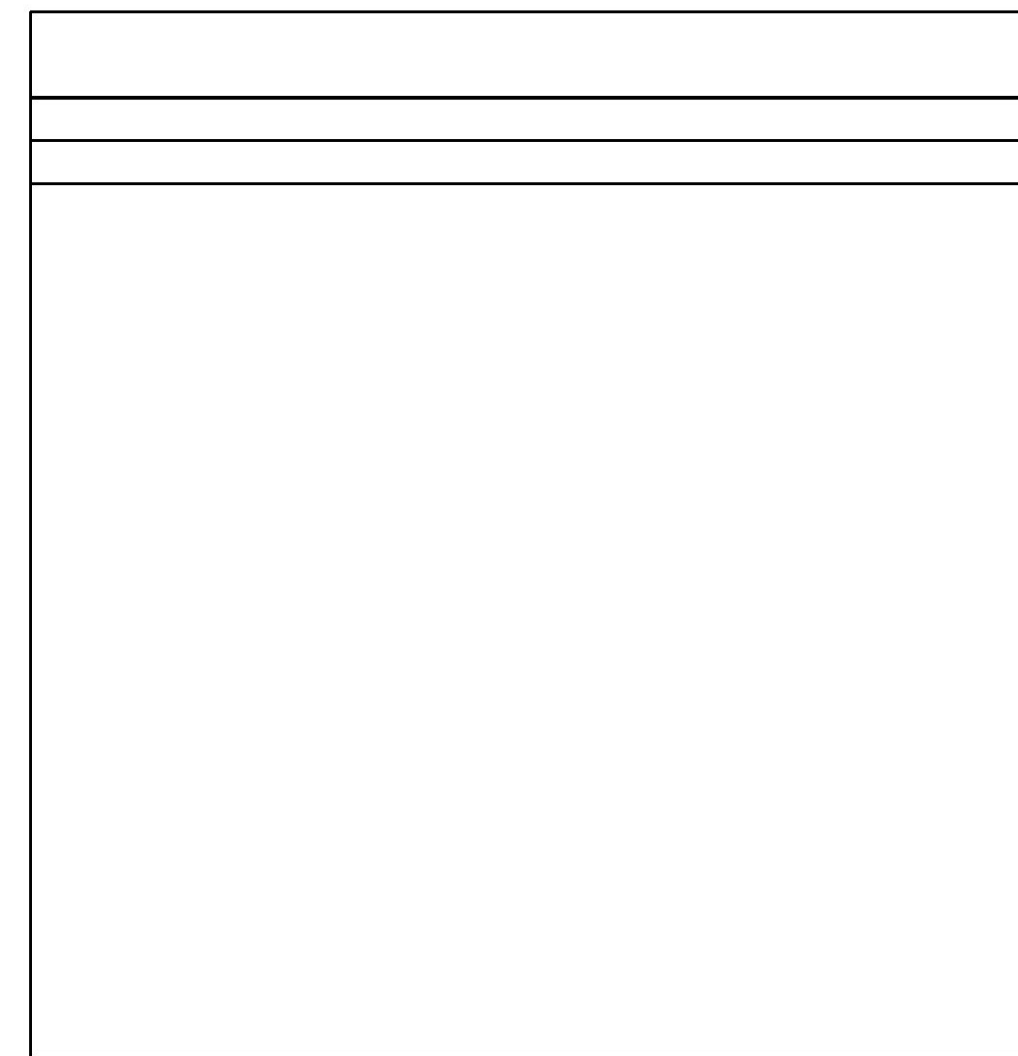
STATION IS A GPS CONTINUOUSLY OPERATING REFERENCE STATION. STATION IS THE ANTENNA REFERENCE POINT OF THE GPS ANTENNA. THE MONUMENT IS ATTACHED TO A TWO STORY CONCRETE BLOCK BUILDING WITH A 6 FT CONCRETE FOUNDATION BUILT IN 1972. MAST IS A 1.75 INCH DIA GALV PIPE THAT IS 108 INCHES LONG. THE MAST IS ATTACHED TO A STEEL MOUNTING FRAME WITH THREE ATTACHMENTS CONSISTING OF 3/8 INCH SS THROUGH BOLTS. THE MOUNTING FRAME IS ATTACHED TO THE BUILDING USING 8 THROUGH BOLTED ATTACHMENT POINTS THAT CONSIST OF 1/2 INCH SS THREADED RODS AND NUTS.

TRAVERSE TIES



* SURVEY COMPLETED: FEBRUARY 27, 2012 BY VSE, M. YEFCHAK-PC, T. YEFCHAK

ALIGNMENT TIES



DATUM
 VERTICAL NAVD 88(GEOD09) FT
 HORIZONTAL NAD 83(CORS) sFT
 ADJUSTMENT LSQ



PROJECT NAME: LUNENBURG
 PROJECT NUMBER: NH CULV(27)

FILE NAME: z1lb294t1e.dgn
 PROJECT LEADER: J. BYATT
 DESIGNED BY: VSE
 TIE SHEET 1

PLOT DATE: 8/6/2015
 DRAWN BY: VSE
 CHECKED BY: VSE
 SHEET 15 OF 74