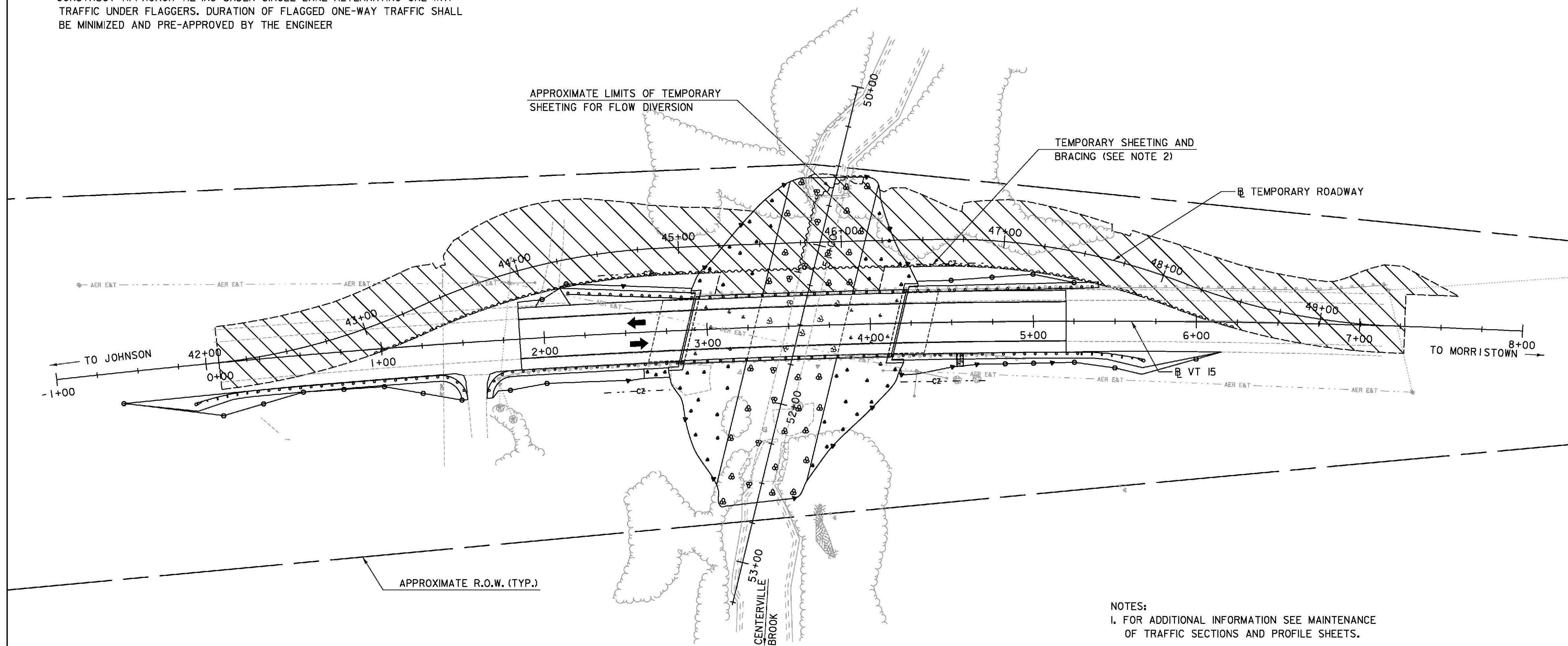
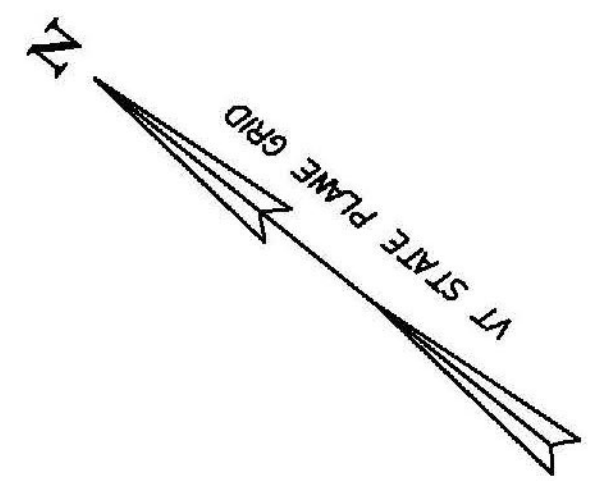


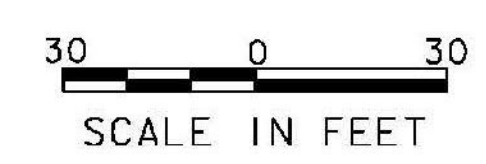
SUGGESTED SEQUENCE OF CONSTRUCTION - PHASE 3:

- SHIFT TRAFFIC TO VT15 FINAL ALIGNMENT AND NEW BRIDGE
- REMOVE TEMPORARY STRUCTURE OVER CULVERT
- MAINTAIN FLOW THROUGH EXISTING CMPP
- EXCAVATE NORTHEAST SIDE OF CHANNEL AND CONSTRUCT NORTHEAST SIDE OF CHANNEL
- INSTALL TEMPORARY SHEETING FOR FLOW DIVERSION AND DIVERT FLOW THROUGH NORTHEAST SIDE OF CHANNEL
- EXCAVATE SOUTHEAST SIDE OF CHANNEL, REMOVE EAST END OF EXISTING CMPP, AND CONSTRUCT SOUTHEAST SIDE OF CHANNEL
- REMOVE TEMPORARY SHEETING AND BRACING CUT WALL AND TEMPORARY SHEETING FOR FLOW DIVERSION
- CONSTRUCT EAST SIDE OF APPROACH EMBANKMENTS TO FINAL BUILD AND REMOVE TEMPORARY SHEETING AND BRACING FILL WALL
- CONSTRUCT APPROACH TIE-INS UNDER SINGLE LANE ALTERNATING ONE-WAY TRAFFIC UNDER FLAGGERS. DURATION OF FLAGGED ONE-WAY TRAFFIC SHALL BE MINIMIZED AND PRE-APPROVED BY THE ENGINEER



- NOTES:**
1. FOR ADDITIONAL INFORMATION SEE MAINTENANCE OF TRAFFIC SECTIONS AND PROFILE SHEETS.
 2. ITEM PLACED IN PRIOR PHASES AND WILL REMAIN IN PLACE FOR THE DURATION OF PHASE 3.

- LEGEND**
- TEMPORARY TRAFFIC BARRIER
 - ENERGY ABSORPTION ATTENUATOR
 - TYPE III BARRICADE (MOD.)
 - REFLECTORIZED PLASTIC DRUM
 - WORK ZONE
 - TEMPORARY SHEETING AND BRACING
 - DIRECTION OF TRAFFIC



TYLIN INTERNATIONAL

PROJECT NAME: HYDE PARK	FILE NAME: zllb292bdr_mot_P3.dgn	PLOT DATE: 11/6/2013
PROJECT NUMBER: STP CULV(26)	PROJECT LEADER: R. HEBERT	DRAWN BY: T. KELLEY
	DESIGNED BY: T. KELLEY	CHECKED BY: D. BRYANT
	MAINTENANCE OF TRAFFIC PLAN, PHASE 3	SHEET 21 OF 60