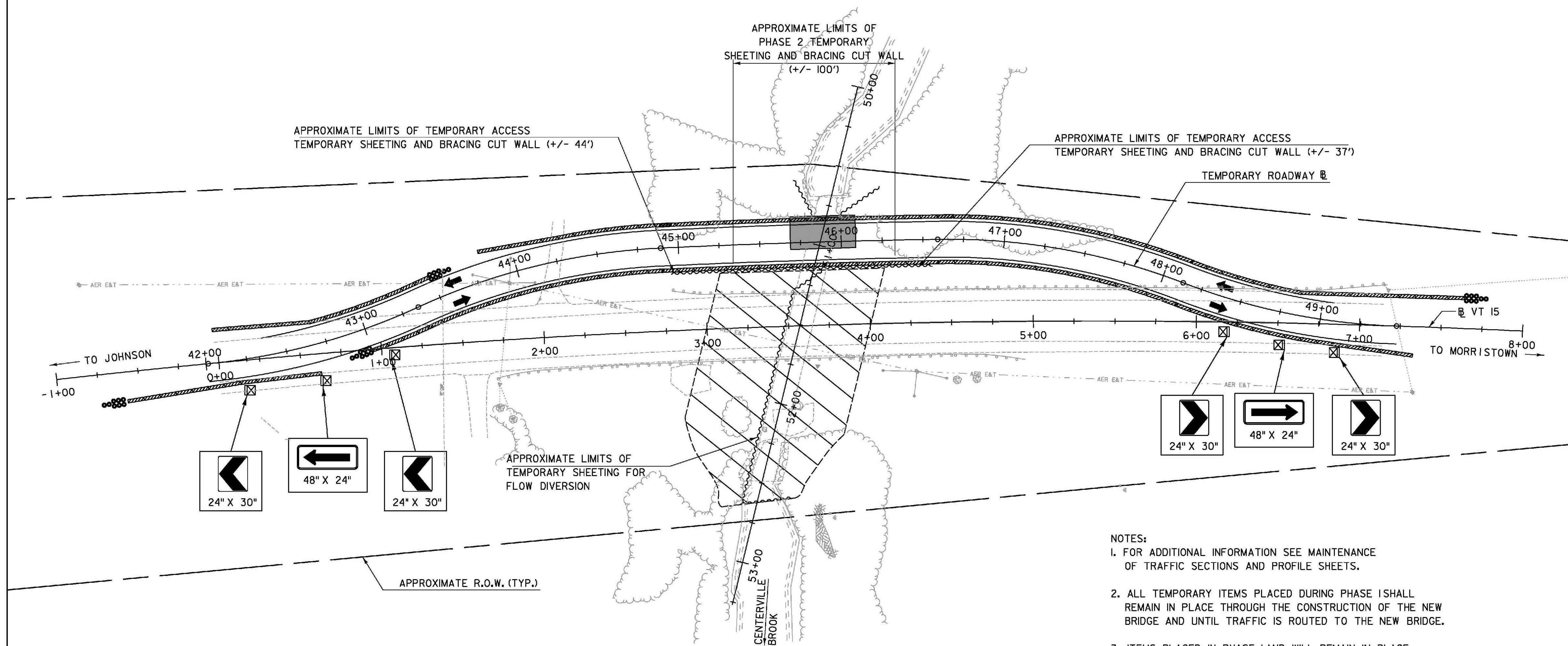
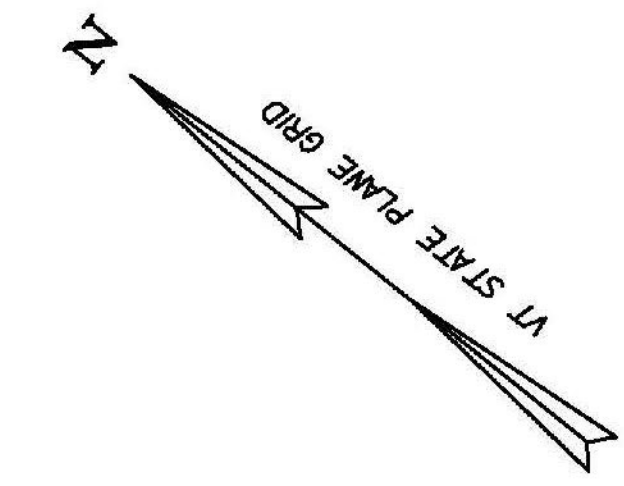


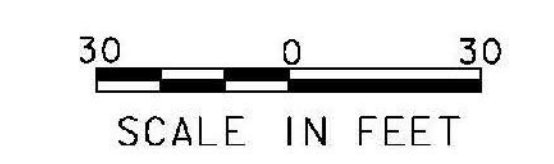
SUGGESTED SEQUENCE OF CONSTRUCTION - PHASE 2A:

- MAINTAIN TRAFFIC OVER TEMPORARY ROADWAY ALIGNMENT
- INSTALL TEMPORARY SHEETING AND BRACING CUT WALL
- MAINTAIN FLOW THROUGH EXISTING CMPP
- EXCAVATE NORTHWEST SIDE OF CHANNEL AND CONSTRUCT NORTHWEST SIDE OF CHANNEL
- INSTALL TEMPORARY SHEETING FOR FLOW DIVERSION AND DIVERT FLOW THROUGH NORTHWEST SIDE OF CHANNEL
- EXCAVATE SOUTHWEST SIDE OF CHANNEL, REMOVE WEST END OF EXISTING CMPP AND CONSTRUCT SOUTHWEST SIDE OF CHANNEL
- REMOVE TEMPORARY SHEETING FOR FLOW DIVERSION



- LEGEND**
- TEMPORARY TRAFFIC BARRIER
 - ENERGY ABSORPTION ATTENUATOR
 - TYPE III BARRICADE (MOD.)
 - REFLECTORIZED PLASTIC DRUM
 - WORK ZONE
 - TEMPORARY SHEETING AND BRACING
 - DIRECTION OF TRAFFIC
 - SIGN FROM PREVIOUS PHASE

- NOTES:**
1. FOR ADDITIONAL INFORMATION SEE MAINTENANCE OF TRAFFIC SECTIONS AND PROFILE SHEETS.
 2. ALL TEMPORARY ITEMS PLACED DURING PHASE 1 SHALL REMAIN IN PLACE THROUGH THE CONSTRUCTION OF THE NEW BRIDGE AND UNTIL TRAFFIC IS ROUTED TO THE NEW BRIDGE.
 3. ITEMS PLACED IN PHASE 1 AND WILL REMAIN IN PLACE FOR THE DURATION OF PHASE 2.



TYLIN INTERNATIONAL

PROJECT NAME: HYDE PARK	PLOT DATE: 11/6/2013
PROJECT NUMBER: STP CULV(26)	DRAWN BY: T. KELLEY
FILE NAME: z1lb292bdr_mot_P2a.dgn	CHECKED BY: D. BRYANT
PROJECT LEADER: R. HEBERT	SHEET 18 OF 60
DESIGNED BY: T. KELLEY	
MAINTENANCE OF TRAFFIC PLAN, PHASE 2A	