

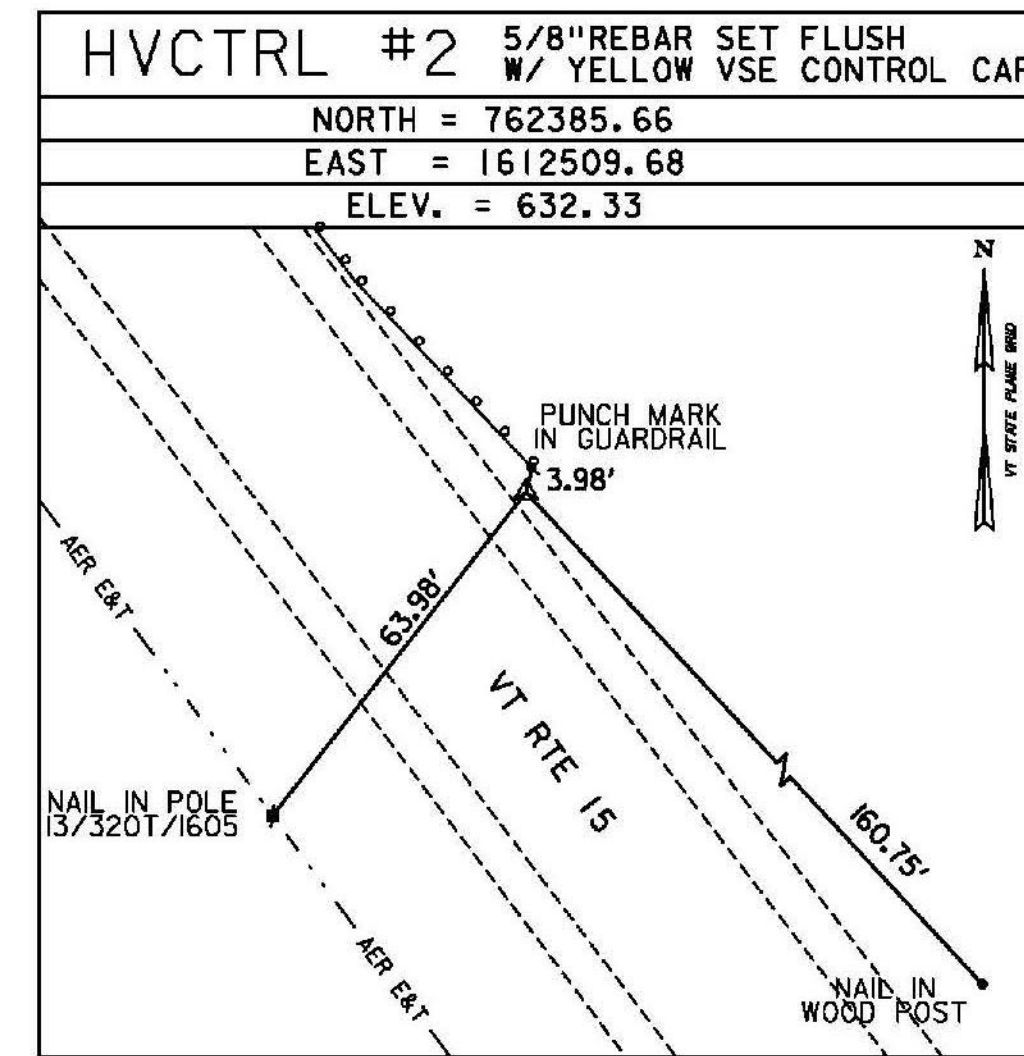
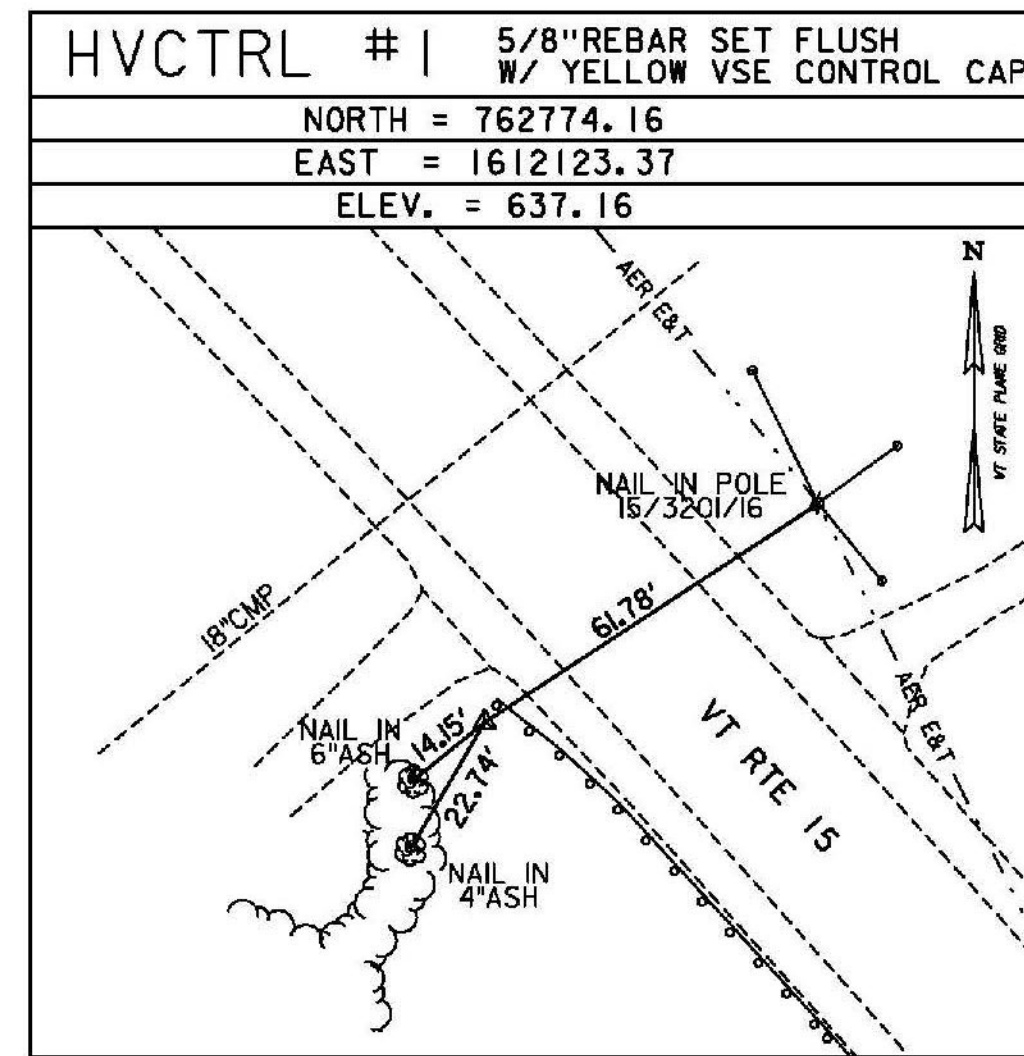
GPS/NGS CONTROL POINTS

HARDWICK CORS ARP

PID DM7840
 N = 732128.65
 E = 1675405.58
 ELLIP HEIGHT = 842.61

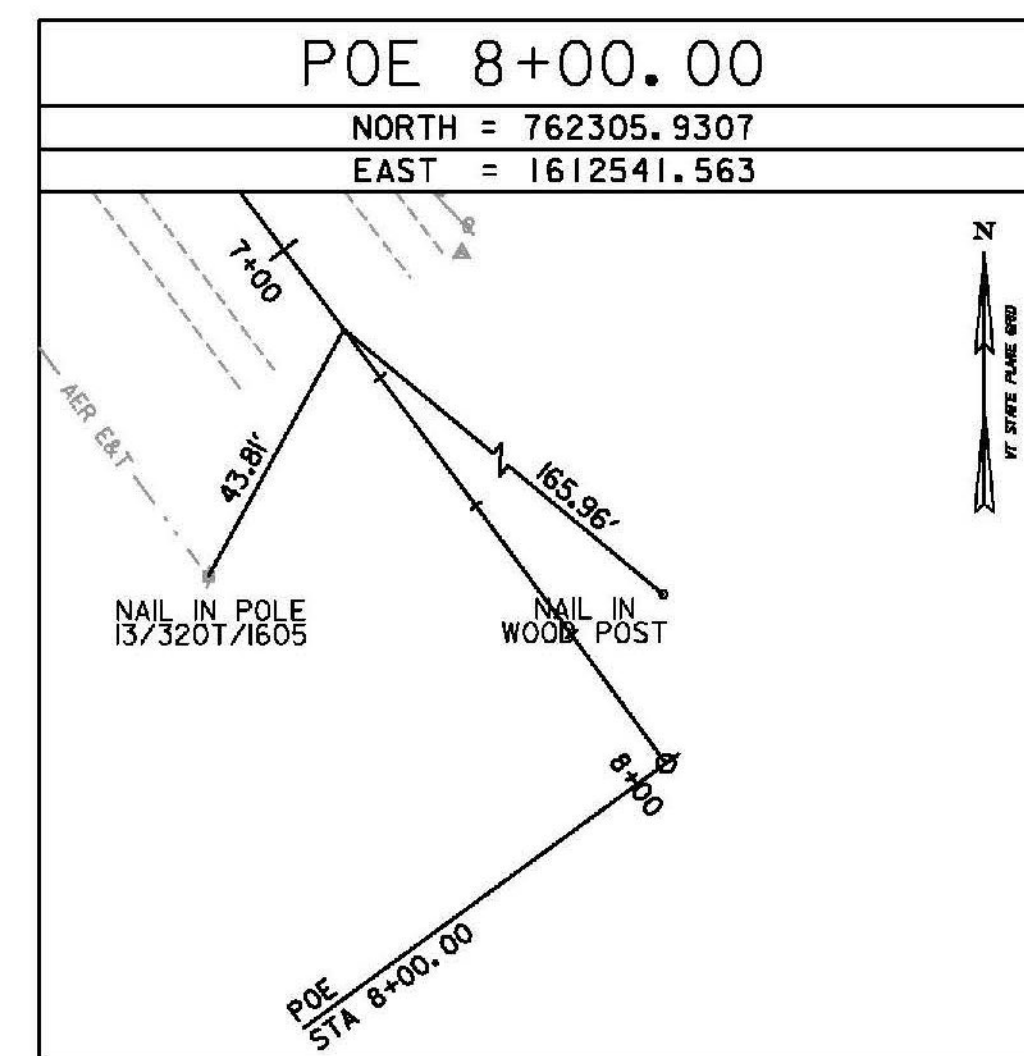
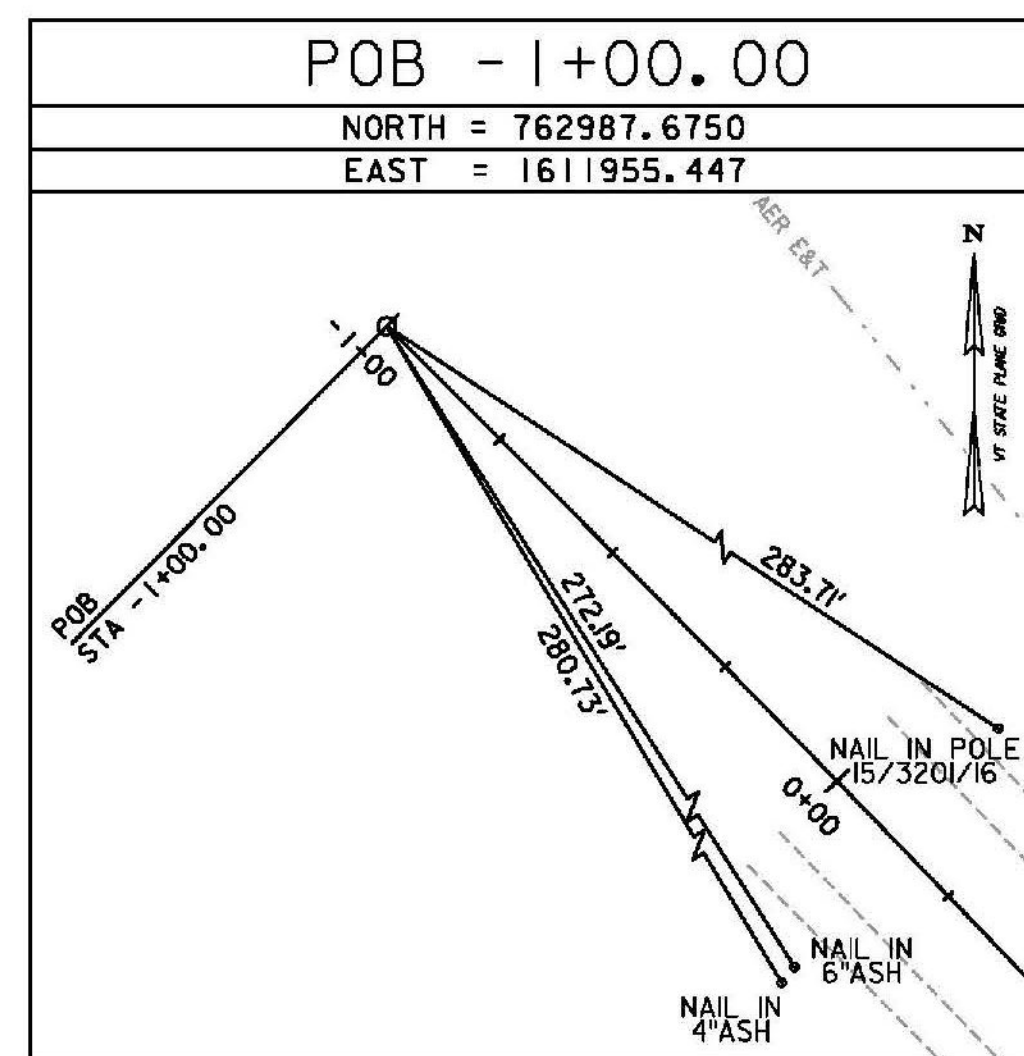
STATION IS A GPS CONTINUOUSLY OPERATING REFERENCE STATION. STATION IS THE ANTENNA REFERENCE POINT OF THE GPS ANTENNA. LOCATED AT THE HARDWICK, VERMONT HAZEN UNION HIGH SCHOOL, THE MONUMENT IS ATTACHED TO A TWO STORY CONCRETE & BRICK BUILDING WITH AN 8 FT CONCRETE FOUNDATION BUILT IN 1970. THE MAST IS A 1.75 INCH DIA. GALV PIPE THAT IS 108 INCHES LONG. THE MAST IS ATTACHED TO A STEEL MOUNTING FRAME WITH THREE ATTACHMENTS CONSISTING OF 3/8 INCH SS THROUGH BOLTS. THE MOUNTING FRAME IS ATTACHED TO THE BUILDING USING 6 ATTACHMENT POINTS. ALL 6 ATTACHMENTS ARE THROUGH BOLTED AND CONSIST OF 1/2 INCH SS THREADED ROD AND NUTS.

TRAVERSE TIES



* MAIN TRAVERSE COMPLETED: APRIL 23, 2012 BY VSE, R. GAUVIN-PC, T. YEFCHAK

ALIGNMENT TIES



SURVEYED BY : R. GAUVIN PC & T. YEFCHAK

SURVEYED DATE : 4/23/2012

DATUM
 VERTICAL NAVD 88 (GEOID09) FT
 HORIZONTAL NAD 83 (CORS) SFT



TYLININTERNATIONAL

PROJECT NAME: HYDE PARK
 PROJECT NUMBER: STP CULV(26)

FILE NAME: zllb292bdr_t1.dgn
 PROJECT LEADER: R. HEBERT
 DESIGNED BY: D. BRYANT
 TIE SHEET

PLOT DATE: 11/6/2013
 DRAWN BY: T. KELLEY
 CHECKED BY: D. BRYANT
 SHEET 11 OF 60