

T.Y. LIN INTERNATIONAL

THE STAMPED DOCUMENTS ARE HEREBY:

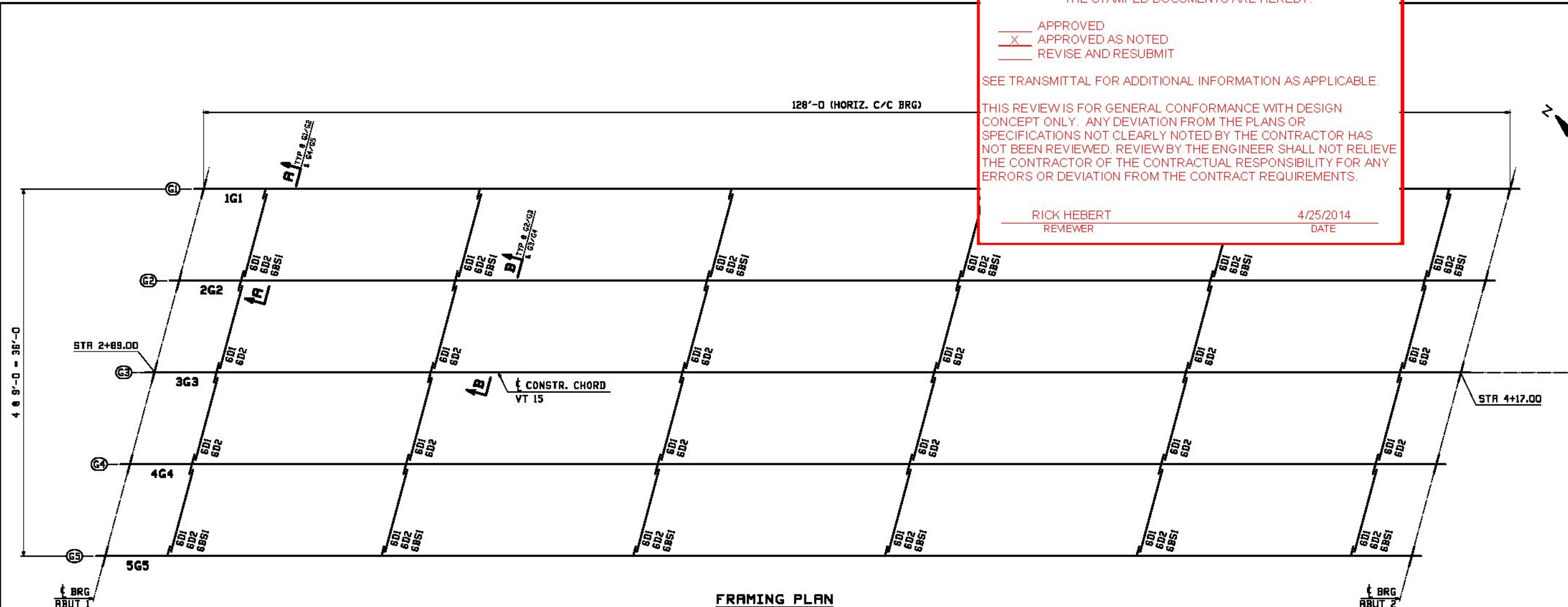
- APPROVED
- X APPROVED AS NOTED
- REVISE AND RESUBMIT

SEE TRANSMITTAL FOR ADDITIONAL INFORMATION AS APPLICABLE.

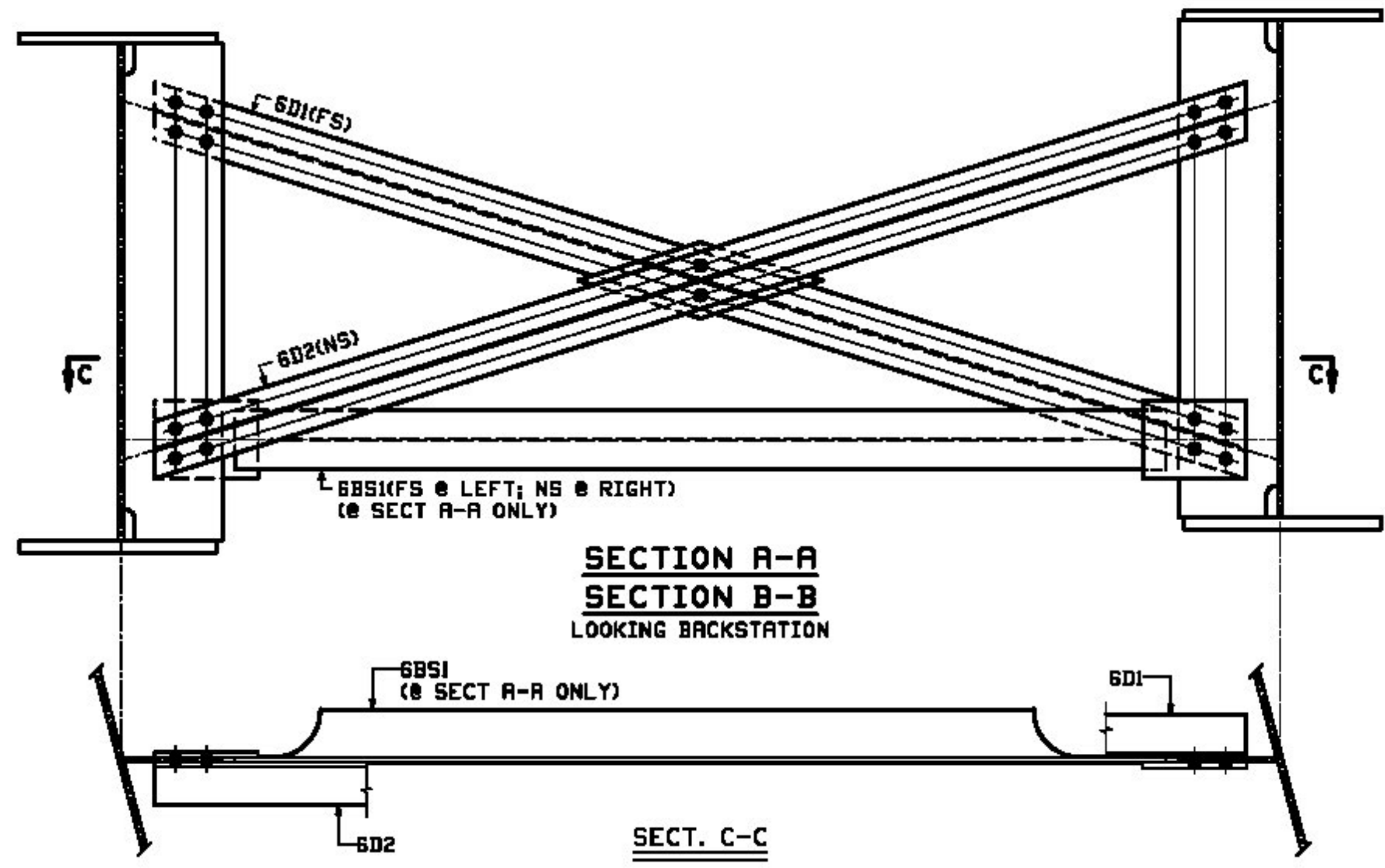
THIS REVIEW IS FOR GENERAL CONFORMANCE WITH DESIGN CONCEPT ONLY. ANY DEVIATION FROM THE PLANS OR SPECIFICATIONS NOT CLEARLY NOTED BY THE CONTRACTOR HAS NOT BEEN REVIEWED. REVIEW BY THE ENGINEER SHALL NOT RELIEVE THE CONTRACTOR OF THE CONTRACTUAL RESPONSIBILITY FOR ANY ERRORS OR DEVIATION FROM THE CONTRACT REQUIREMENTS.

RICK HEBERT
REVIEWER

4/25/2014
DATE



FRAMING PLAN



SECTION A-A
SECTION B-B
LOOKING BACKSTATION

SECT. C-C

FIELD BOLT LIST		A325 Type 3 BOLTS		THICKNESS OF PCS. CONNECTED		PIECES CONNECTED AND REQUIRED	
LINE	NO. REQ'D	BOLT SIZE	ACTUAL COUNT	MIN.	MAX.	MIN.	MAX.
1							CROSSFRAME @ FRASCIA
2	96	7/8"	24	1/2"	3/4"	1	CONN STIFF ~ DIAG FLG
3	96	7/8"	24	1/2"	3/4"	1	CONN STIFF ~ DIAG FLG-GUSS
4	24	7/8"	12	1/2"	3/4"	1	DIAG FLG-CTR GUSS-DIAG FLG
5							
6							CROSSFRAME @ INTERIOR
7	192	7/8"	48	1/2"	3/4"	1	CONN STIFF ~ DIAG FLG
8	24	7/8"	12	1/2"	3/4"	1	DIAG FLG-CTR GUSS-DIAG FLG
9							

1: 1 Hard Flat Washer

FIELD BOLT SUMMARY		2% + 2 ADDED, MIN. 2 EXTRA		REMARKS	
LINE	NO. OF BOLTS	TYPE	BOLT LEN	ACTUAL COUNT	
1	298	A325 Type 3	2 1/2"	288	
2	149	A325 Type 3	2 1/2"	144	
4	445	Hard Flat Washers for 7/8" BOLT (F438-3)			
5					
6					
7					

Bolted connections shall be installed using the Direct Tension Indicator Method. Refer to Section 506.19 of the 2011 General Special Provisions.

REV.	DATE	REMARKS	DWN	CHK	APVL	SHOP
MATERIAL:		SURFACE PREP. & PAINT:		HOLES:		SHOP BOLTS:
M270-50M (UN)		SEE GNI		5/8"		
DESCRIPTION: FRAMING PLAN						
			CASCO BAY STEEL STRUCTURES, INC. 1 WALLACE AVE. PHONE (207) 780-6722 SOUTH PORTLAND, ME 04106 FAX: (207) 780-6725			
STRUCTURE: VT RTE 15 OVER CENTERVILLE BRIDGE #42 HYDE PARK LAMOILLE COUNTY			DRAWN:	DATE:		
			JAS	02/28		
			CHKD:	DATE:		
			DD	3/7/14		
LOCATION: HYDE PARK, VT			JOB NO.		DWG NO.	
PROJ NO. STP CULV (26)			565		E1	
CUSTOMER: VDOT			REV. Δ			