

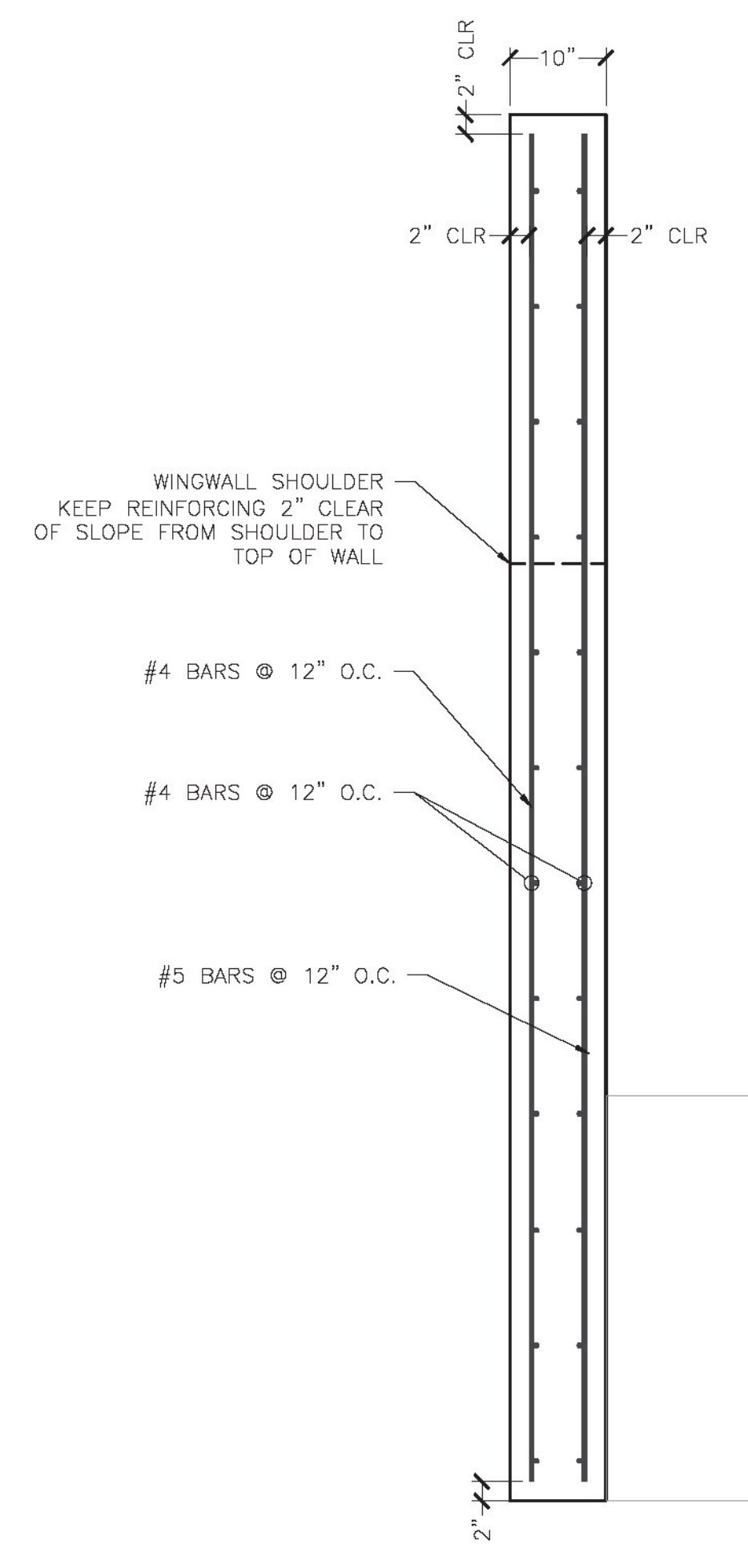
NOTE: BAR COUNTS REPRESENT 1 UNIT.

WW4 REINFORCING SCHEDULE					
BAR MARK	LOCATION	TYPE	SIZE/SPACING	CUT LENGTH	# OF PCS
VERTICAL	OSF	STRAIGHT	#4 @ 12"	9'-11 1/2" TO 9'-1 1/4"	10
VERTICAL	ISF	STRAIGHT	#5 @ 9"	9'-11 1/2" TO 9'-1 1/4"	10
HORIZONTAL	OSF	STRAIGHT	#4 @ 12"	9'-11 1/2"	10
HORIZONTAL	ISF	STRAIGHT	#4 @ 12"	9'-10 1/4"	10
DIAGONAL	FOLLOW SLOPE	STRAIGHT	#4	9'-0"	2

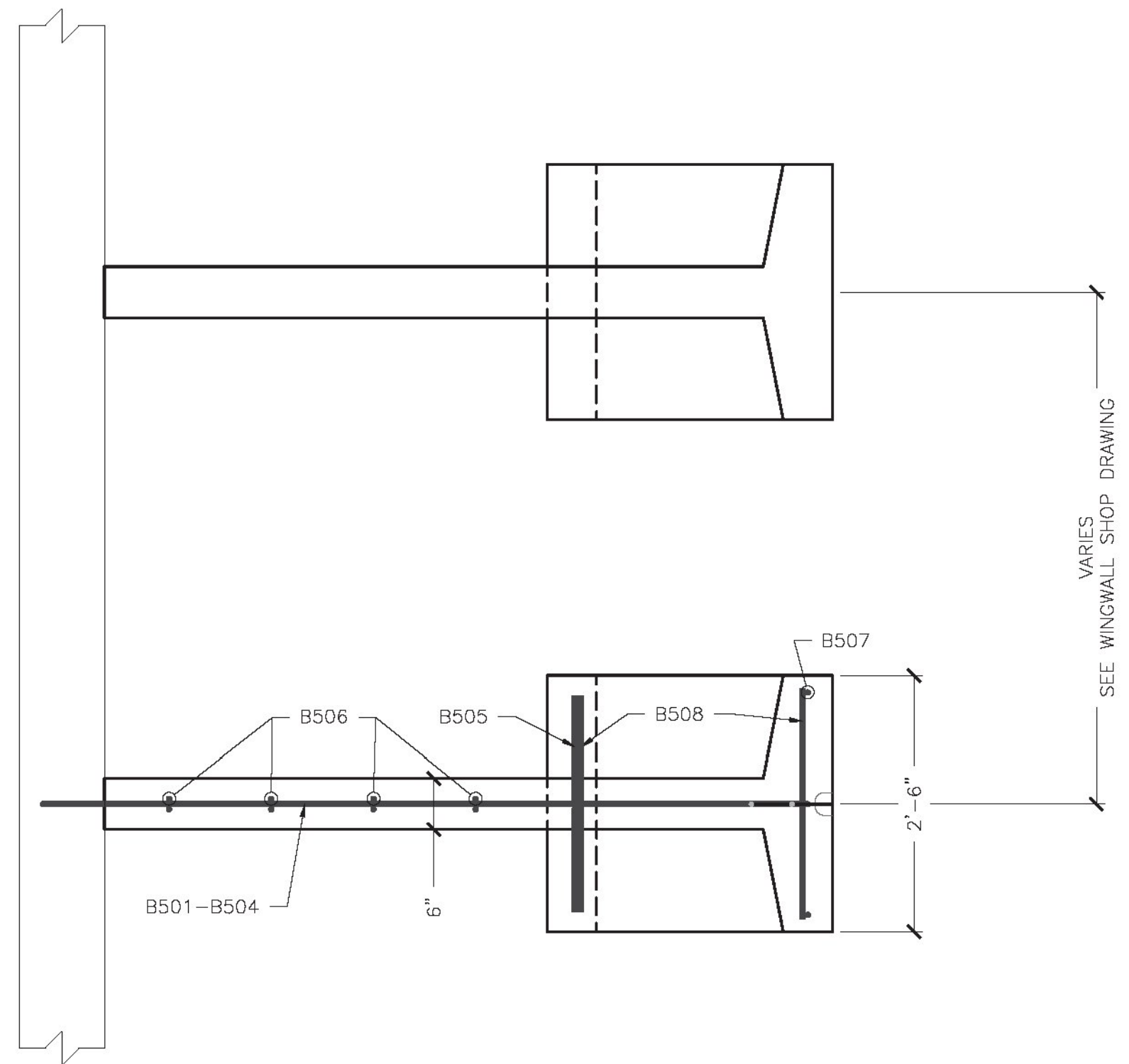
WW2 REINFORCING SCHEDULE					
BAR MARK	LOCATION	TYPE	SIZE/SPACING	CUT LENGTH	# OF PCS
VERTICAL	OSF	STRAIGHT	#4 @ 12"	10'-7 1/2" TO 6'-3 1/2"	6
VERTICAL	ISF	STRAIGHT	#5 @ 9"	10'-7 1/2" TO 6'-3 1/2"	6
HORIZONTAL	OSF	STRAIGHT	#4 @ 12"	5'-11 1/2"	11
HORIZONTAL	ISF	STRAIGHT	#4 @ 12"	5'-10 1/4"	11
DIAGONAL	FOLLOW SLOPE	STRAIGHT	#4	6'-5"	2

WW3 REINFORCING SCHEDULE					
BAR MARK	LOCATION	TYPE	SIZE/SPACING	CUT LENGTH	# OF PCS
VERTICAL	OSF	STRAIGHT	#4 @ 12"	9'-11 1/2" TO 6'-1 1/4"	5
VERTICAL	ISF	STRAIGHT	#5 @ 9"	9'-11 1/2" TO 6'-1 1/4"	5
HORIZONTAL	OSF	STRAIGHT	#4 @ 12"	4'-5 1/2"	10
HORIZONTAL	ISF	STRAIGHT	#4 @ 12"	4'-4 1/4"	10
DIAGONAL	FOLLOW SLOPE	STRAIGHT	#4	5'-0"	2

WW1 REINFORCING SCHEDULE					
BAR MARK	LOCATION	TYPE	SIZE/SPACING	CUT LENGTH	# OF PCS
VERTICAL	OSF	STRAIGHT	#4 @ 12"	9'-11 1/2" TO 8'-5 1/2"	10
VERTICAL	ISF	STRAIGHT	#5 @ 9"	9'-11 1/2" TO 8'-5 1/2"	10
HORIZONTAL	OSF	STRAIGHT	#4 @ 12"	9'-11 1/2"	10
HORIZONTAL	ISF	STRAIGHT	#4 @ 12"	9'-10 1/4"	10
DIAGONAL	FOLLOW SLOPE	STRAIGHT	#4	9'-0"	2

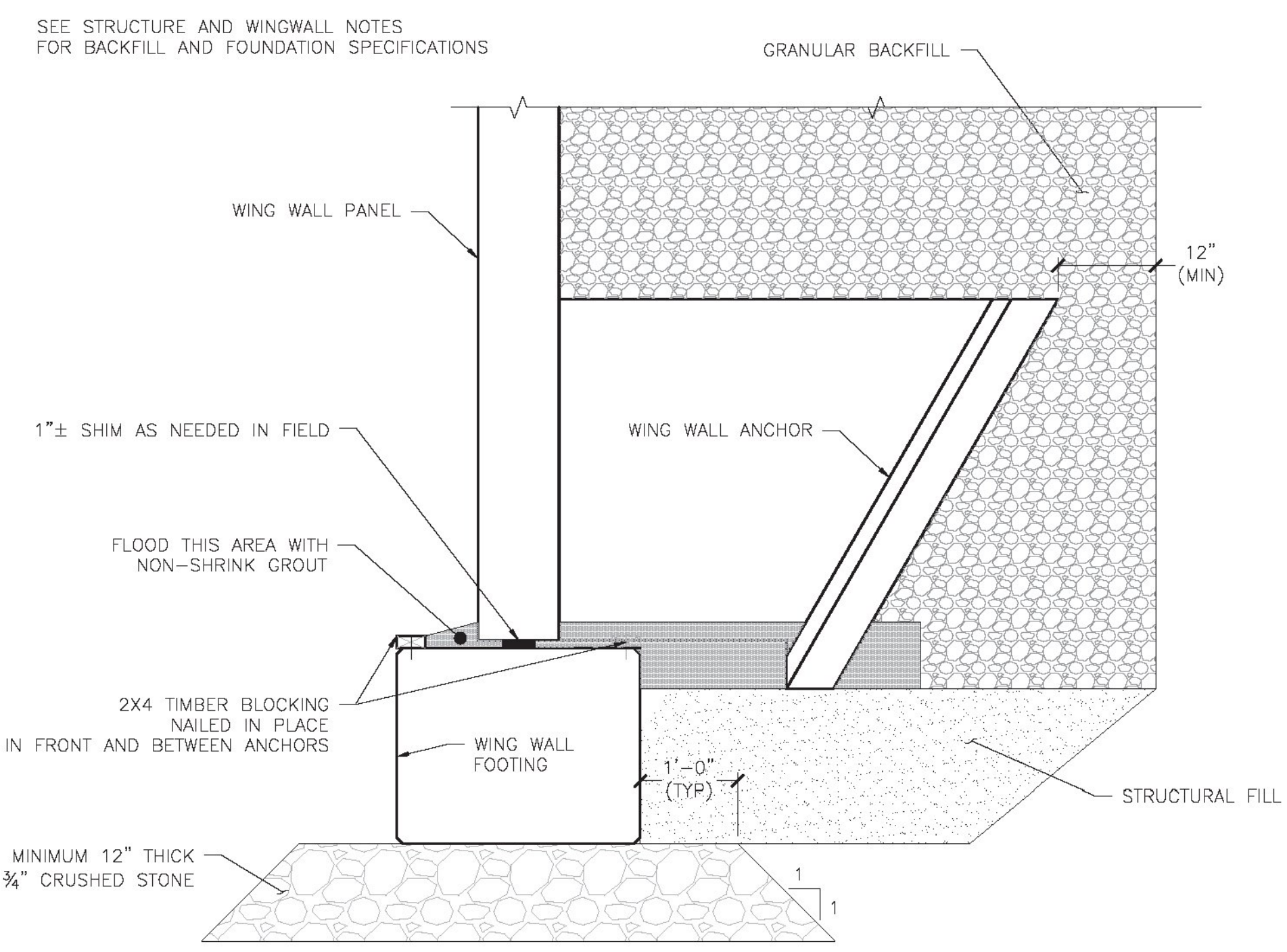


1 WINGWALL REINFORCING (TYP)
3/4" = 1'-0"

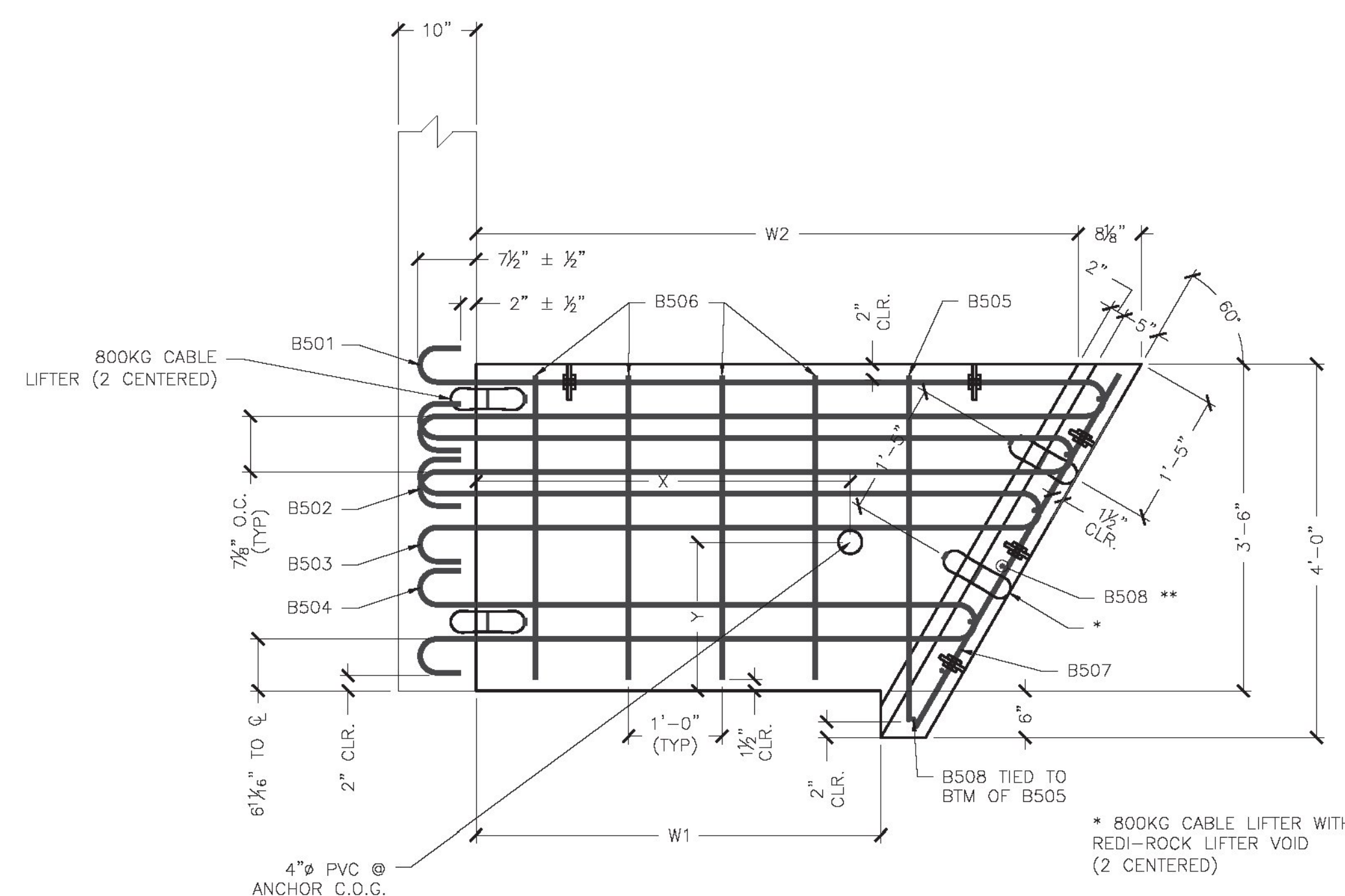


NOTE: REINFORCING SHOWN REPRESENTS "E" ANCHOR
OTHER ANCHOR REINFORCING SIMILAR

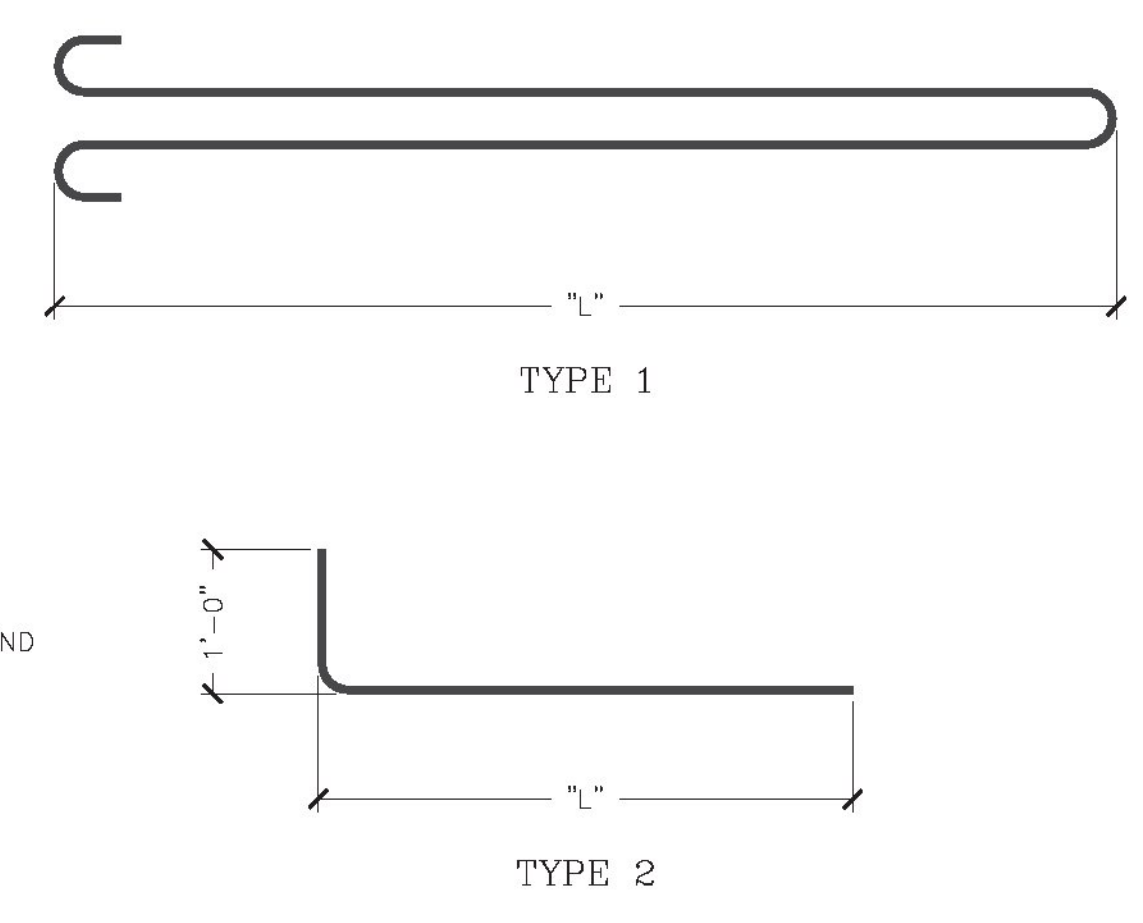
6 REQ'D



2 FOOTING TO WW
ATTACHMENT DETAIL
3/4" = 1'-0"



3 ANCHOR DETAIL
3/4" = 1'-0"



ANCHOR TYPE "B"		CONCRETE QUANTITY	0.41 CY
W1	WEIGHT	1740 LB	
W1		1'-4"	
W2		3'-5 1/2"	
X = 2'-2 1/8"	Y = 1'-8 3/8"		
BAR LIST			
MARK	QTY	SIZE	LENGTH
B501	1	#5	4'-4 1/2"
B502	1	#5	4'-0 1/2"
B503	1	#5	3'-8 1/2"
B504	1	#5	3'-0"
B505	2	#5	3'-8 1/2"
B506	2	#5	Str.
B507	4	#5	Str.
B508	7	#5	Str.

ANCHOR TYPE "C"		CONCRETE QUANTITY	0.48 CY
W1	WEIGHT	2010 LB	
W1		2'-4"	
W2		4'-5 1/2"	
X = 2'-8 3/8"	Y = 1'-8 1/2"		
BAR LIST			
MARK	QTY	SIZE	LENGTH
B501	1	#5	5'-4 1/2"
B502	1	#5	5'-0 1/2"
B503	1	#5	4'-8 1/2"
B504	1	#5	4'-0"
B505	2	#5	3'-8 1/2"
B506	4	#5	Str.
B507	4	#5	Str.
B508	7	#5	Str.

ANCHOR TYPE "D"		CONCRETE QUANTITY	0.54 CY
W1	WEIGHT	2285 LB	
W1		3'-4"	
W2		5'-5 1/2"	
X = 3'-5 1/8"	Y = 1'-8 1/2"		
BAR LIST			
MARK	QTY	SIZE	LENGTH
B501	1	#5	6'-4 1/2"
B502	1	#5	6'-0 1/2"
B503	1	#5	5'-8 1/2"
B504	1	#5	5'-0"
B505	2	#5	3'-8 1/2"
B506	6	#5	Str.
B507	4	#5	Str.
B508	7	#5	Str.

ANCHOR TYPE "E"		CONCRETE QUANTITY	0.61 CY
W1	WEIGHT	2550 LB	
W1		4'-4"	
W2		6'-5 1/2"	
X = 4'-0"	Y = 1'-8 1/2"		
BAR LIST			
MARK	QTY	SIZE	LENGTH
B501	1	#5	7'-4 1/2"
B502	1	#5	7'-0 1/2"
B503	1	#5	6'-8 1/2"
B504	1	#5	6'-0"
B505	2	#5	3'-8 1/2"
B506	8	#5	Str.
B507	4	#5	Str.
B508	7	#5	Str.

ANCHOR TYPE "F"		CONCRETE QUANTITY	0.68 CY
W1	WEIGHT	2860 LB	
W1		5'-4"	
W2		7'-5 1/2"	
X = 4'-7 1/8"	Y = 1'-8 1/2"		
BAR LIST			
MARK	QTY	SIZE	LENGTH
B501	1	#5	8'-4 1/2"
B502	1	#5	8'-0 1/2"
B503	1	#5	7'-8 1/2"
B504	1	#5	7'-0"
B505	2	#5	3'-8 1/2"
B506	10	#5	Str.
B507	4	#5	Str.
B508	7	#5	Str.

Prepared for:
Renaud Brothers, Inc.
283 Fort Bridgeman Rd #2
Vernon, VT 05354

Project No. 5778
Date: 2/24/2015

Designed by: xxx
Drawn by: CFP
Checked by: XXX

Scale: AS SHOWN

MICHIE
CONSTRUCTION
173 BUXTON INDUSTRIAL DRIVE - PO BOX 870
HENNIKER, NH 03242
PHONE: 603-428-3218
WWW.MICHIECORP.COM

REINFORCING SCHEDULE
Structural
Licenses: 0001
Professional
4/20/15

Revised WW4 angle as contractors request
Revised per Stanton review #1015
Date
By

DWG NO.
SS.0