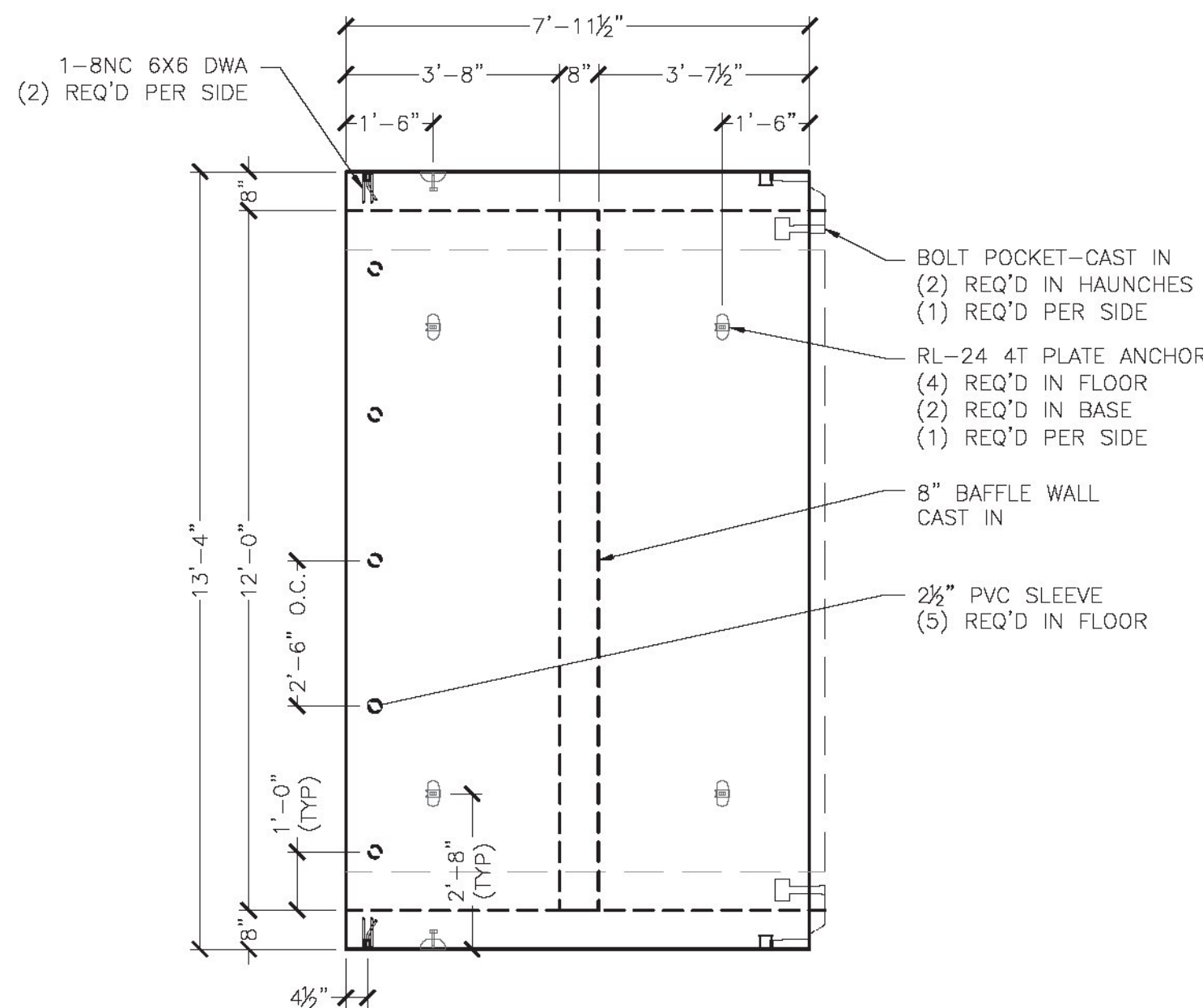
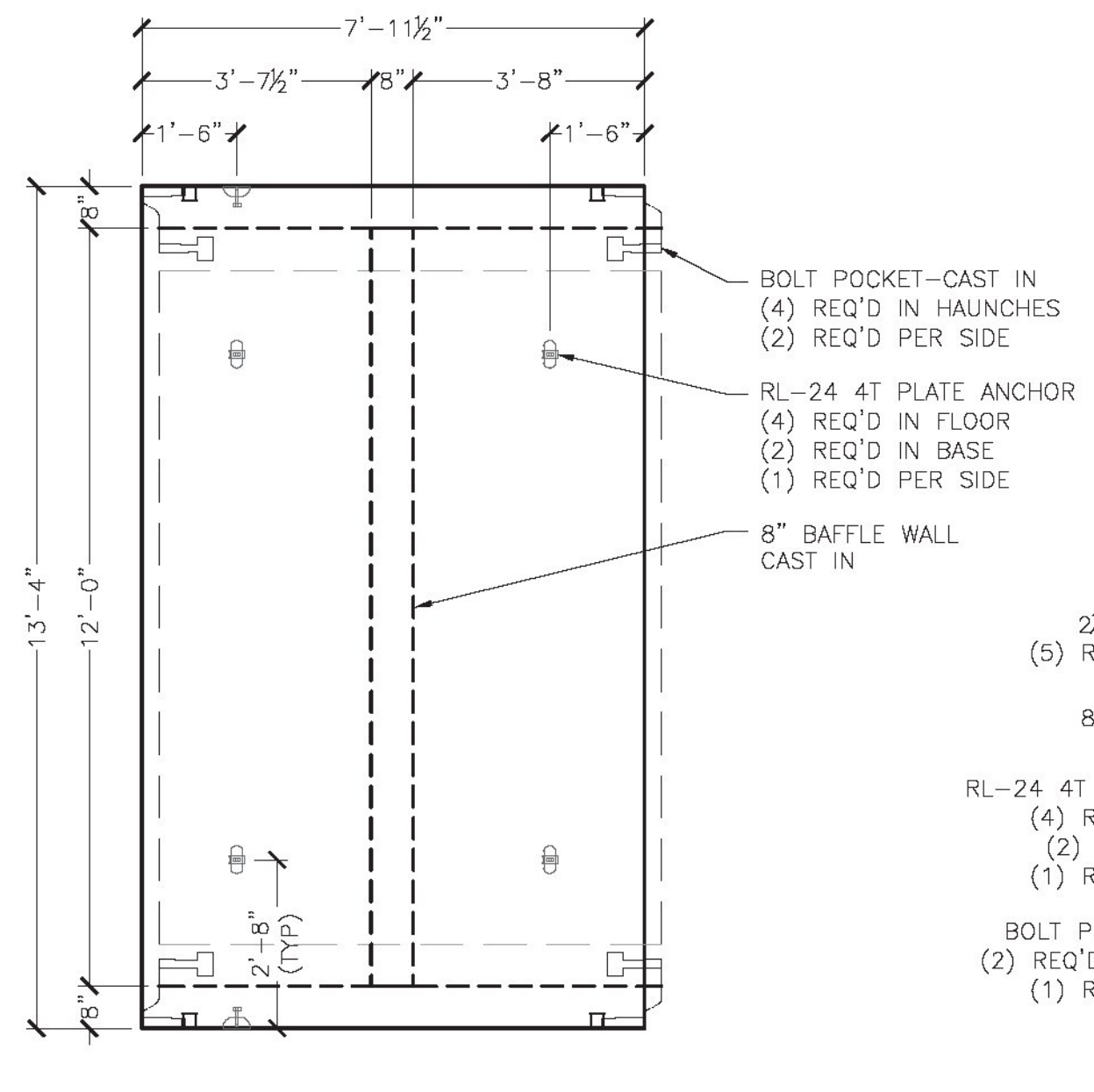


DATE: 2015.09.01.13



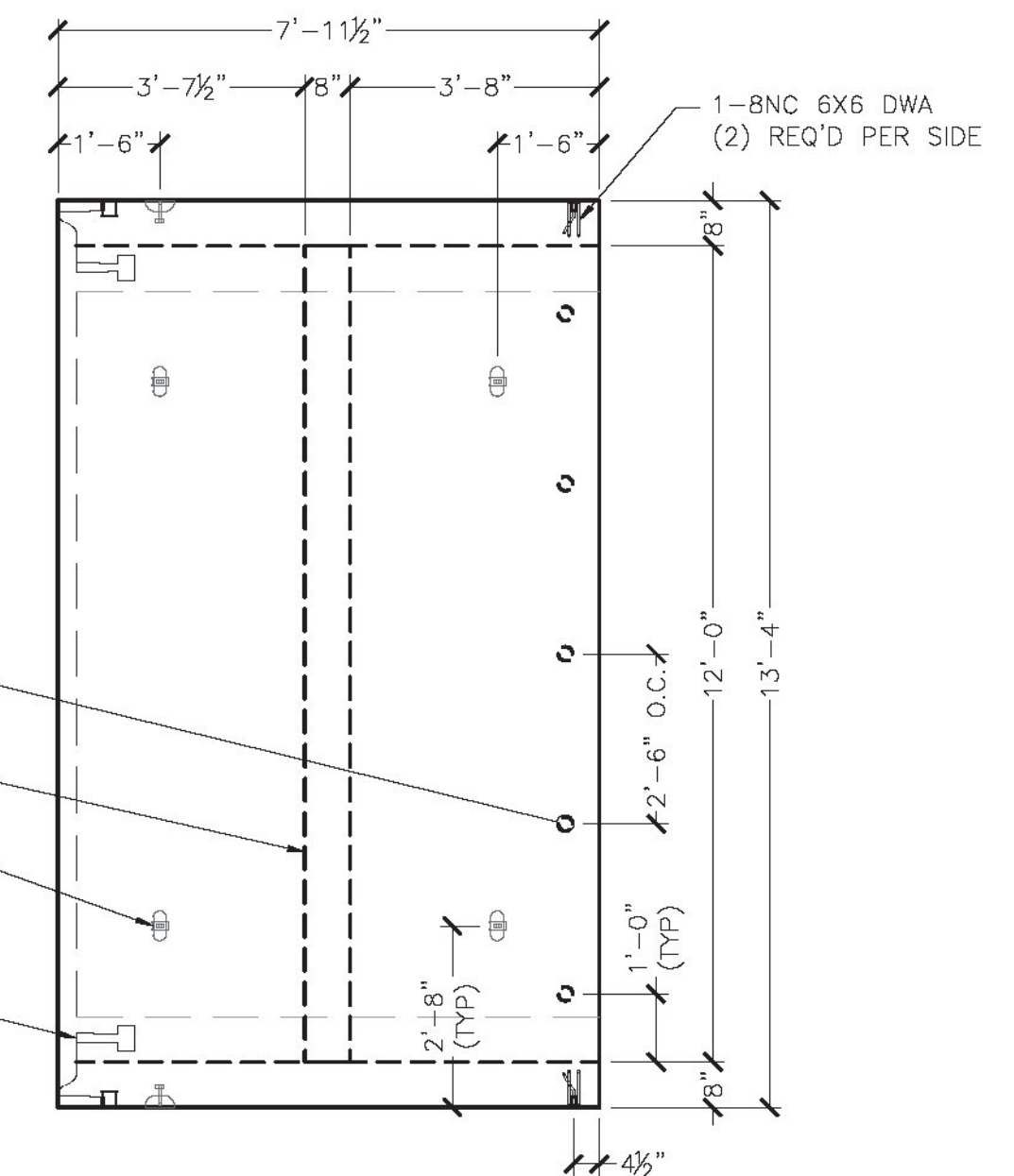
1 BC3 PLAN VIEW
S3.0 3/8" = 1'-0"

BC3 - 1 REQ'D
ITEM 281207
UNIT WEIGHT AND VOLUME:
CULVERT: 5.62CY (23,600#)
BAFFLE WALL: .28CY (1,180#)
TOTAL WEIGHT: 24,780#



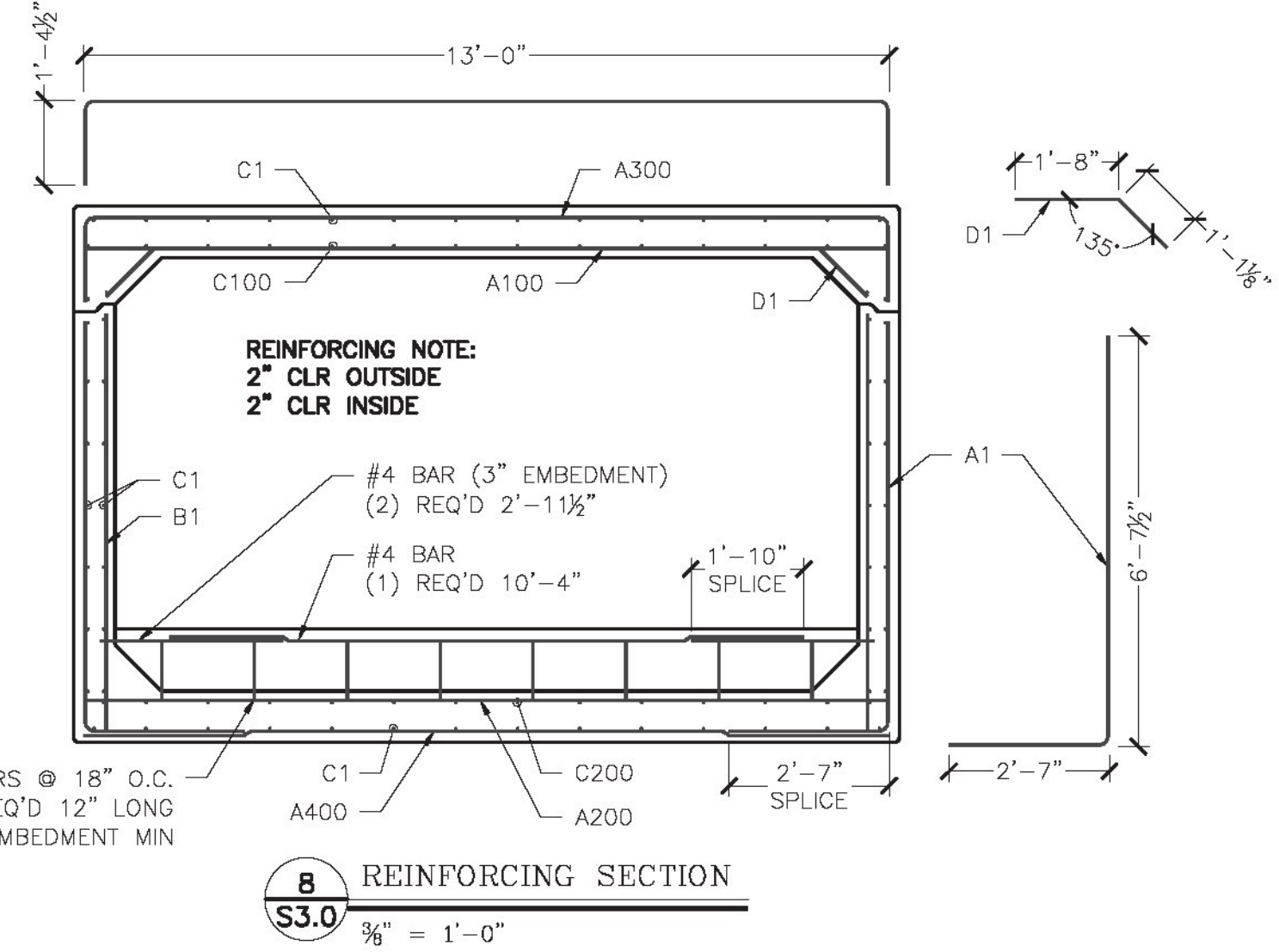
3 BC2 PLAN VIEW
S3.0 3/8" = 1'-0"

BC2 - 7 REQ'D
ITEM 281207
UNIT WEIGHT AND VOLUME:
CULVERT: 5.62CY (23,600#)
BAFFLE WALL: .28CY (1,180#)
TOTAL WEIGHT: 24,780#



5 BC1 PLAN VIEW
S3.0 3/8" = 1'-0"

BC1 - 1 REQ'D
ITEM 281207
UNIT WEIGHT AND VOLUME:
CULVERT: 5.62CY (23,600#)
BAFFLE WALL: .28CY (1,180#)
TOTAL WEIGHT: 24,780#

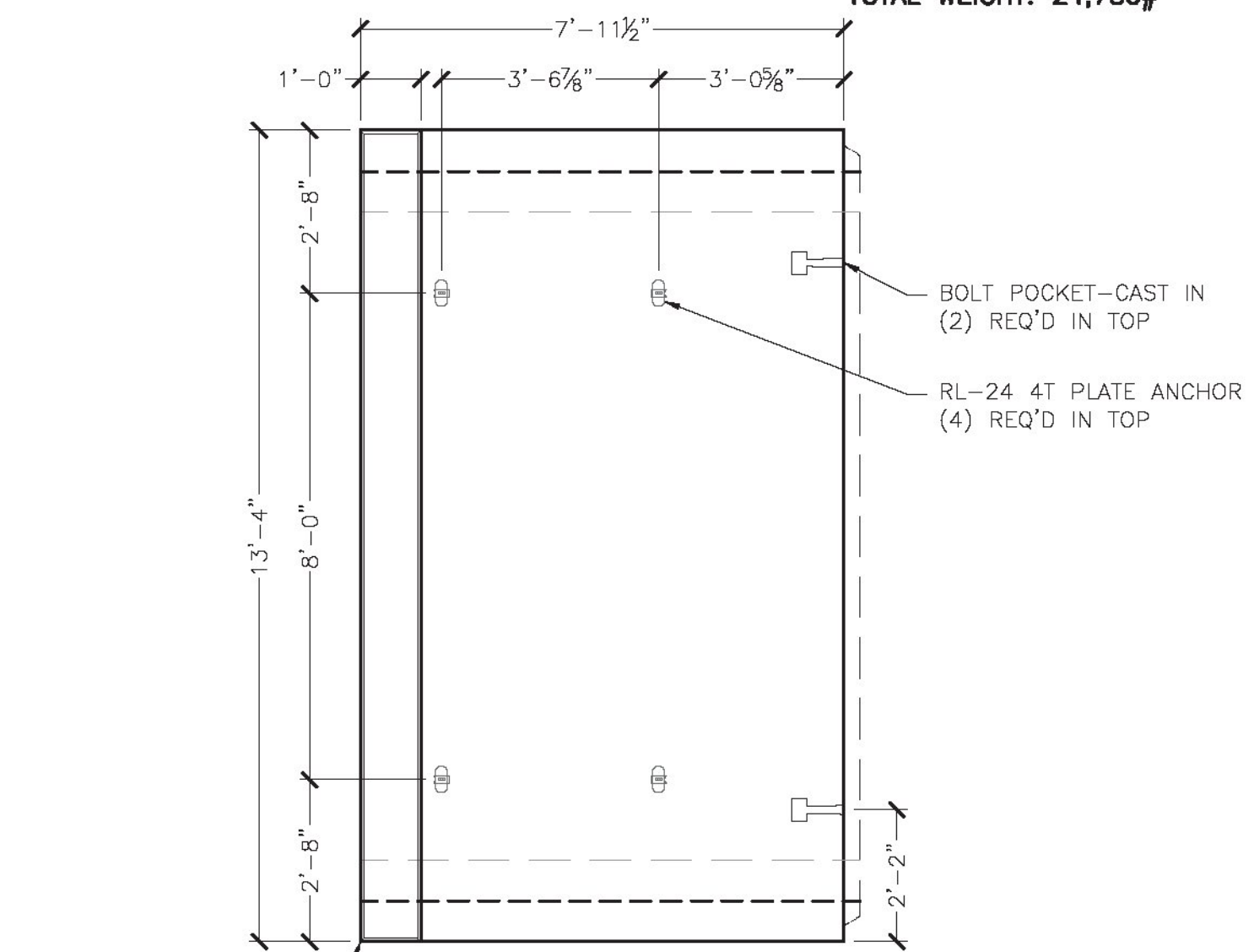


8 REINFORCING SECTION
S3.0 3/8" = 1'-0"

LOCATION	MARK	QTY	SIZE	SPACING	TYPE	CUT LENGTH
TOP SLAB (INT)	A100	14	#8	7"	STRAIGHT	13'-0"
BOT. SLAB (INT)	A200	8	#5	12"	STRAIGHT	13'-0"
TOP SLAB (EXT)	A300	8	#4	12"	"U" BAR	15'-6 1/2"
BOT. SLAB (EXT)	A400	11	#6	9"	STRAIGHT	13'-0"
WALL (EXT)	A1	22	#6	9"	"L" BAR	9'-1 1/2"
WALL (INT)	B1	16	#4	12"	STRAIGHT	6'-9"
LONGIT. TOP (EXT)	C1	14	#4	12"	STRAIGHT	7'-7"
LONGIT. TOP (INT)	C100	14	#4	12"	STRAIGHT	7'-7"
LONGIT. BOT. (INT)	C200	14	#4	12"	STRAIGHT	7'-7"
LONGIT. BOT. (EXT)	C1	14	#4	12"	STRAIGHT	7'-7"
LONGIT. WALL (EXT)	C1	14	#4	12"	STRAIGHT	7'-7"
LONGIT. WALL (INT)	C1	14	#4	12"	STRAIGHT	7'-7"
TOP SLAB (HAUNCH)	D1	28	#4	7"	BENT BARS	2'-9 1/2"

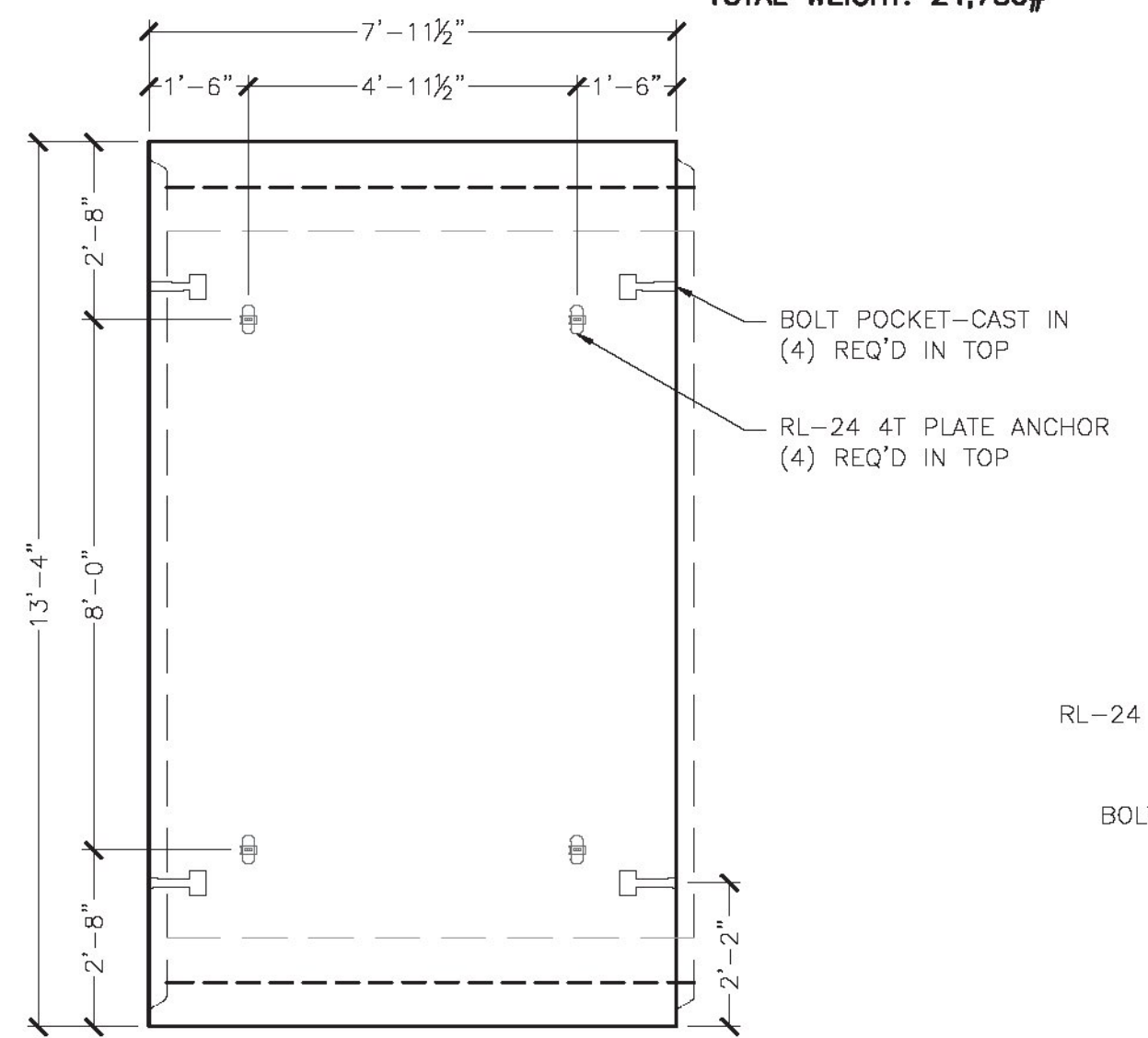
LOCATION	MARK	QTY	SIZE	SPACING	TYPE	CUT LENGTH
TOP SLAB (INT)	A100	14	#8	7"	STRAIGHT	13'-0"
BOT. SLAB (INT)	A200	8	#5	12"	STRAIGHT	13'-0"
TOP SLAB (EXT)	A300	8	#4	12"	"U" BAR	15'-6 1/2"
BOT. SLAB (EXT)	A400	11	#6	9"	STRAIGHT	13'-0"
WALL (EXT)	A1	22	#6	9"	"L" BAR	8'-8 1/2"
WALL (INT)	B1	16	#4	12"	STRAIGHT	6'-9"
LONGIT. TOP (EXT)	C1	14	#4	12"	STRAIGHT	7'-7"
LONGIT. TOP (INT)	C100	14	#4	12"	STRAIGHT	7'-4"
LONGIT. BOT. (INT)	C200	14	#4	12"	STRAIGHT	7'-4"
LONGIT. BOT. (EXT)	C1	14	#4	12"	STRAIGHT	7'-7"
LONGIT. WALL (EXT)	C1	14	#4	12"	STRAIGHT	7'-7"
LONGIT. WALL (INT)	C1	14	#4	12"	STRAIGHT	7'-4"
TOP SLAB (HAUNCH)	D1	28	#4	7"	BENT BARS	2'-9 1/2"
TOP SLAB	DBS1	28	#4	12"	"L" DOWELS	2'-0"
CURB WALL	DB1	28	#4	12"	STRAIGHT	2'-4 1/2"
CURB WALL	CWS1	6	#4	12"	STRAIGHT	13'-0"

LOCATION	MARK	QTY	SIZE	SPACING	TYPE	CUT LENGTH
TOP SLAB (INT)	A100	14	#8	7"	STRAIGHT	13'-0"
BOT. SLAB (INT)	A200	8	#5	12"	STRAIGHT	13'-0"
TOP SLAB (EXT)	A300	8	#4	12"	"U" BAR	15'-6 1/2"
BOT. SLAB (EXT)	A400	11	#6	9"	STRAIGHT	13'-0"
WALL (EXT)	A1	22	#6	9"	"L" BAR	8'-8 1/2"
WALL (INT)	B1	16	#4	12"	STRAIGHT	6'-9"
LONGIT. TOP (EXT)	C1	14	#4	12"	STRAIGHT	7'-7"
LONGIT. TOP (INT)	C100	14	#4	12"	STRAIGHT	7'-10"
LONGIT. BOT. (INT)	C200	14	#4	12"	STRAIGHT	7'-10"
LONGIT. BOT. (EXT)	C1	14	#4	12"	STRAIGHT	7'-7"
LONGIT. WALL (EXT)	C1	14	#4	12"	STRAIGHT	7'-7"
LONGIT. WALL (INT)	C1	14	#4	12"	STRAIGHT	7'-10"
TOP SLAB (HAUNCH)	D1	28	#4	7"	BENT BARS	2'-9 1/2"
TOP SLAB	DBS1	28	#4	12"	"L" DOWELS	2'-0"
CURB WALL	DB1	28	#4	12"	STRAIGHT	1'-8 1/2"
CURB WALL	CWS1	6	#4	12"	STRAIGHT	13'-0"



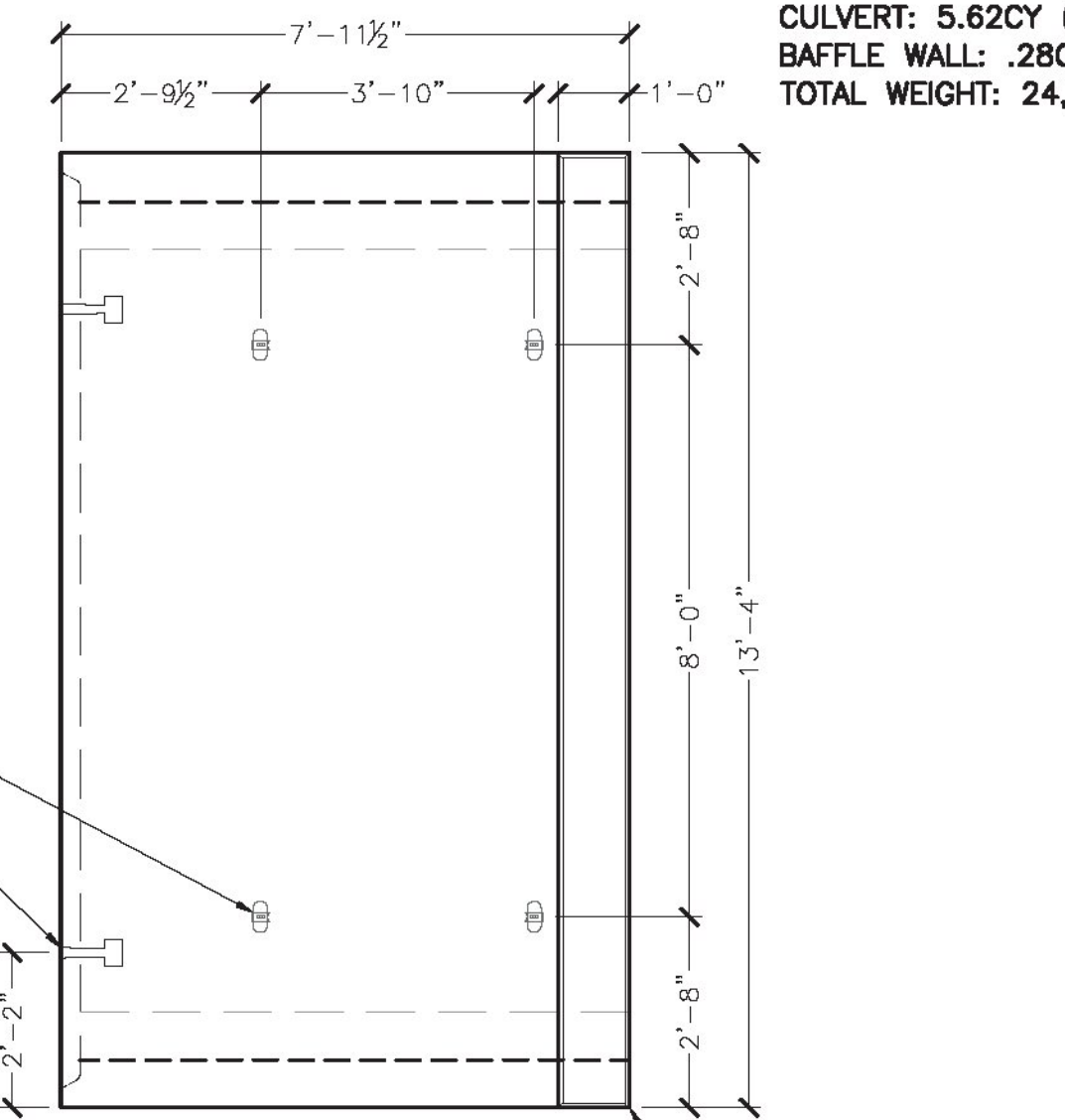
2 TS3 ELEV. VIEW
S3.0 3/8" = 1'-0"

TS3 - 1 REQ'D
ITEM 281207
UNIT WEIGHT AND VOLUME:
TOP SLAB: 3.76CY (15,790#)
CURB WALL: .94CY (3,950#)
TOTAL WEIGHT: 19,740#



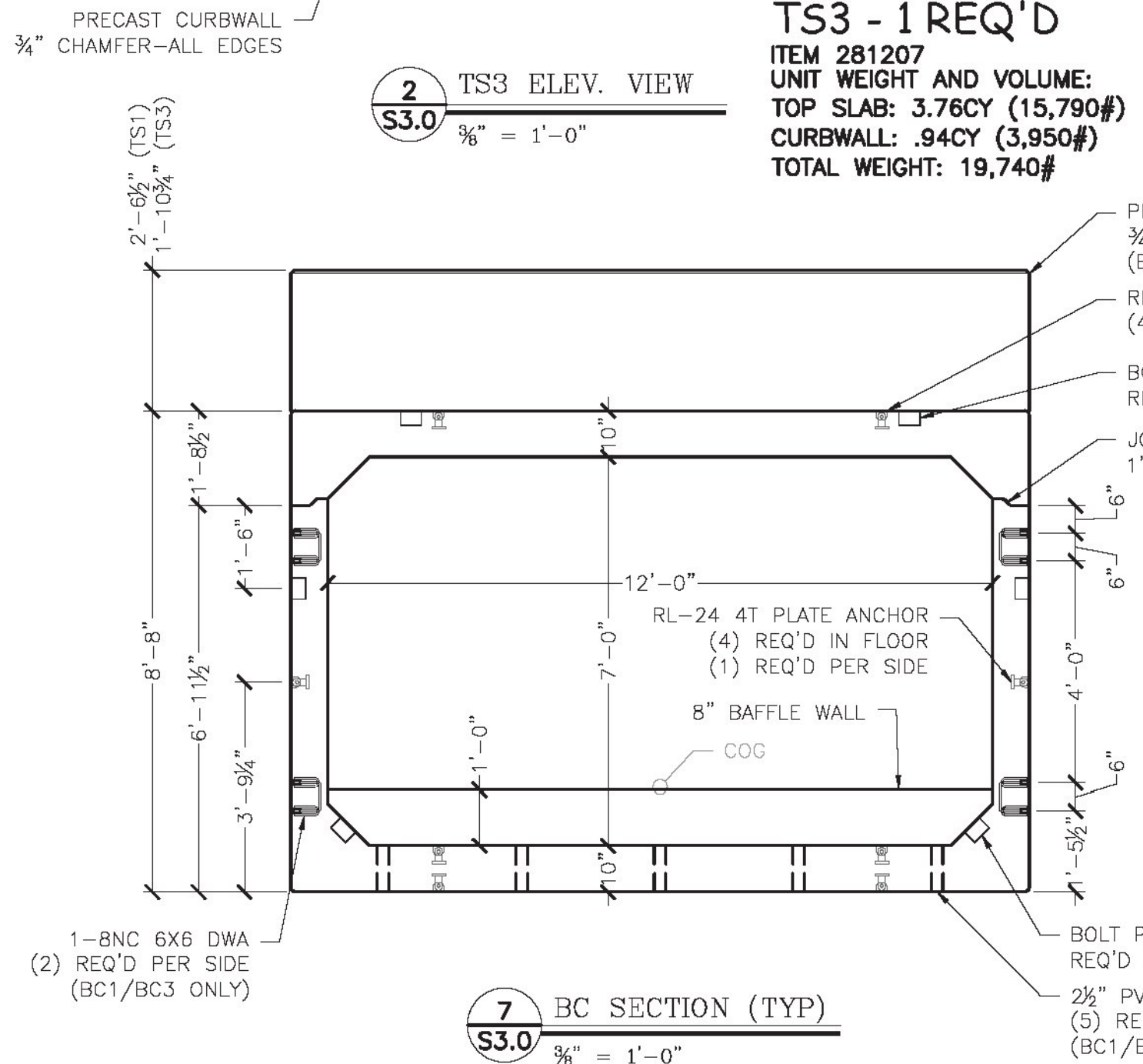
4 TS2 ELEV. VIEW
S3.0 3/8" = 1'-0"

TS2 - 7 REQ'D
ITEM 281207
UNIT WEIGHT AND VOLUME:
TOP SLAB: 3.76CY (15,790#)

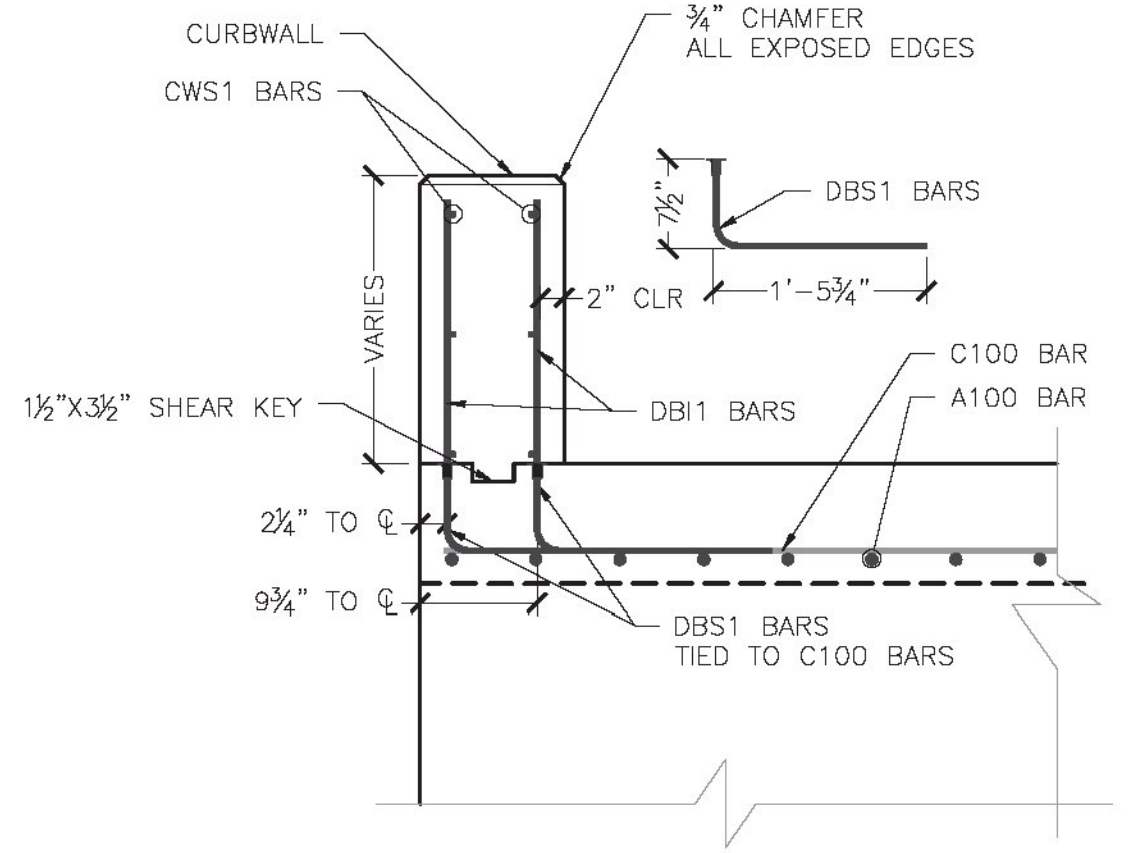


6 TS1 ELEV. VIEW
S3.0 3/8" = 1'-0"

TS1 - 1 REQ'D
ITEM 281207
UNIT WEIGHT AND VOLUME:
TOP SLAB: 3.76CY (15,790#)
CURB WALL: .94CY (3,950#)
TOTAL WEIGHT: 19,740#



7 BC SECTION (TYP)
S3.0 3/8" = 1'-0"



9 CURB WALL REINFORCING SECTION
S3.0 3/8" = 1'-0"

Revision	Date	No.
4/20/15		
4/15/15		
4/15/15		

MICHIE
CONSULTING ENGINEERS
173 BUXTON INDUSTRIAL DRIVE - PO BOX 870
HENNIKER, NH 03242
PHONE: 603-428-3218
WWW.MICHIECORP.COM

Bridge #52 - VT Route 30 - VAOT STP Culv(31)
Winhall, VT
12x7' Open Top Box Culvert - Footing Layout & Elevations
Scale: AS SHOWN
Checked by: PTL
Designed by: PTL/CFP
Drawn by: CFP
Project No. 5778
Date: 2/24/2015

Prepared for:
Renaud Brothers, Inc.
283 Fort Bridgeman Rd #2
Vernon, VT 05354

DWG No.
S3.0