

621.20 - STEEL BEAM GUARDRAIL, GALVANIZED
 STA. 31+50.30, LT. TO STA. 31+75.30, LT.
 STA. 32+00.00, RT. TO STA. 32+25.00, RT.
 STA. 34+50.00, RT. TO STA. 34+75.00, RT.
 STA. 35+50.30, LT. TO STA. 35+75.30, LT

621.205 - STEEL BEAM GUARDRAIL, GALVANIZED W/8 FEET POSTS
 STA. 31+75.30, LT. TO STA. 35+50.30, LT.
 STA. 32+25.00, RT. TO STA. 34+50.00, RT.

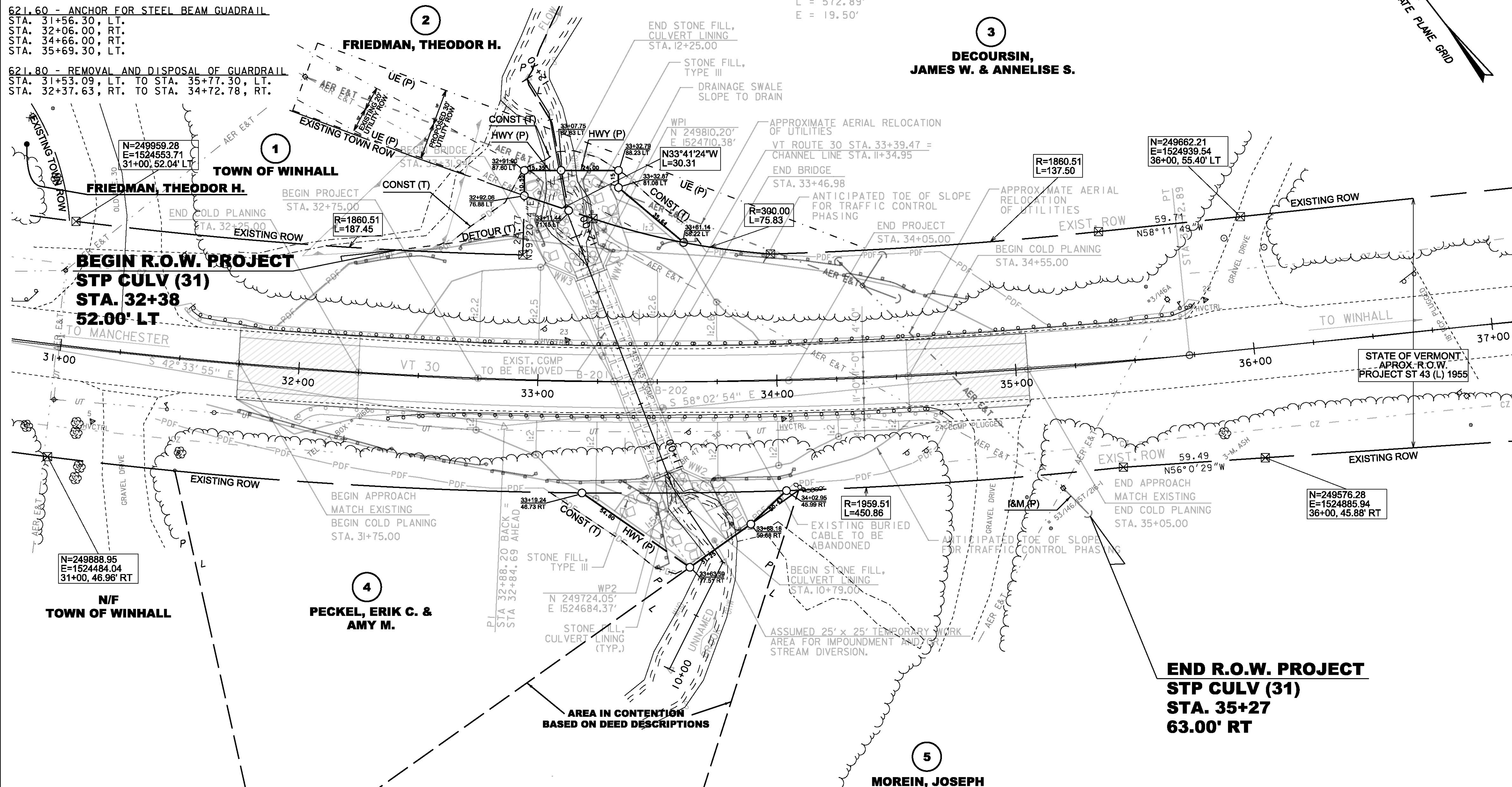
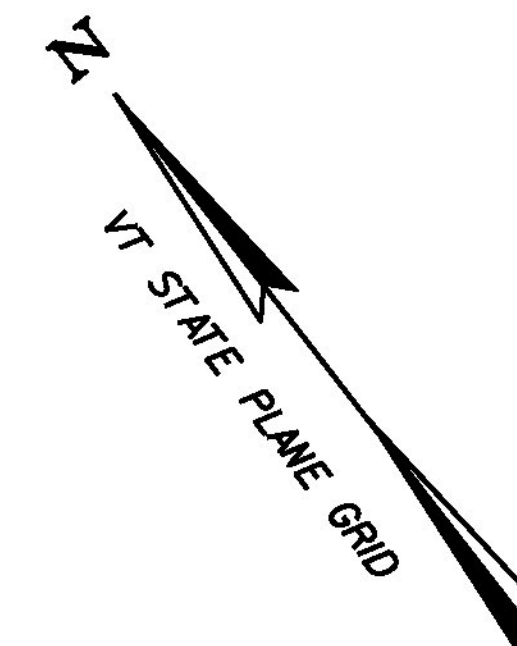
621.60 - ANCHOR FOR STEEL BEAM GUADRAIL
 STA. 31+56.30, LT.
 STA. 32+06.00, RT.
 STA. 34+66.00, RT.
 STA. 35+69.30, LT.

621.80 - REMOVAL AND DISPOSAL OF GUARDRAIL
 STA. 31+53.09, LT. TO STA. 35+77.30, LT.
 STA. 32+37.63, RT. TO STA. 34+72.78, RT.

646.400 - DURABLE 4 INCH WHITE LINE
 STA. 31+75.00, RT. TO STA. 35+05.00, RT.
 STA. 31+75.00, LT. TO STA. 35+05.00, LT.

646.410 - DURABLE 4 INCH YELLOW LINE
 STA. 31+75.00, CL. TO STA. 35+05.05, CL. (DYCL)

CURVE DATA
 PC = 30+00.00
 $\Delta = 15^\circ 28' 59.44''$
 $D = 2^\circ 42' 09.47''$
 $R = 2120.00'$
 $T = 288.20'$
 $L = 572.89'$
 $E = 19.50'$



N=249888.95
 E=1524484.04
 31+00, 46.96' RT

N/T
 TOWN OF WINHALL

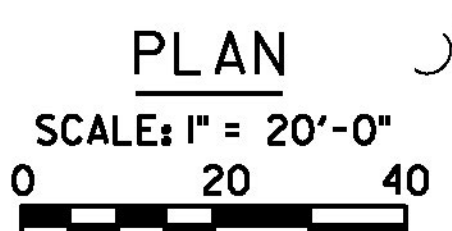
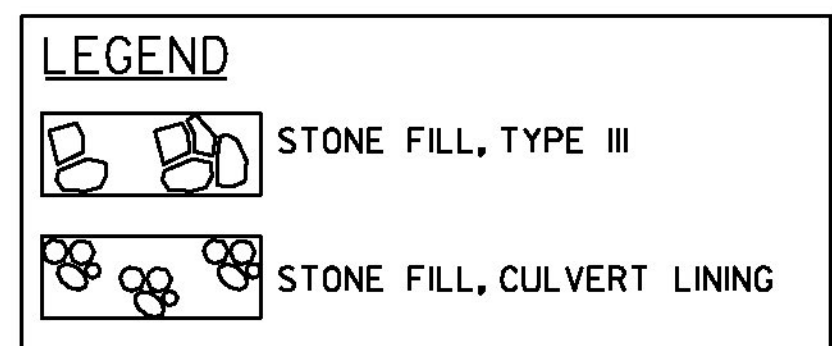
PECKEL, ERIK C. &
 AMY M.

MOREIN, JOSEPH

STATE OF VERMONT
 APROX. R.O.W.
 PROJECT ST 43 (L) 1955

N=249576.28
 E=1524885.94
 36+00, 45.88' RT

**END R.O.W. PROJECT
 STP CULV (31)
 STA. 35+27
 63.00' RT**



NOTES:
 1. GRADE IN ACCORDANCE WITH THE TYPICAL ROADWAY SECTION AND ROADWAY CROSS SECTIONS UNLESS NOTED OTHERWISE.

LINES SHOWN ON THIS PLAN AS EXISTING PROPERTY LINES P/L ARE BELIEVED TO BE ACCURATE BUT SHOULD NOT BE RELIED UPON FOR PURPOSES UNRELATED TO THE STATE OF VERMONT'S ACQUISITION OF LAND AND RIGHTS FOR THIS PROJECT.

PROJECT NAME: WINHALL
 PROJECT NUMBER: STP CULV(31)
 FILE NAME: r11b2681ay.dgn
 PROJECT LEADER: M. SARGENT
 DESIGNED BY: STANTEC
 R.O.W. LAYOUT SHEET 1 OF 1
 PLOT DATE: 18-APR-2014
 DRAWN BY: A. EGZI
 CHECKED BY: R. CLOUTIER
 SHEET 60 OF 60

FOR R.O.W. USE ONLY