

GPS CONTROL POINTS

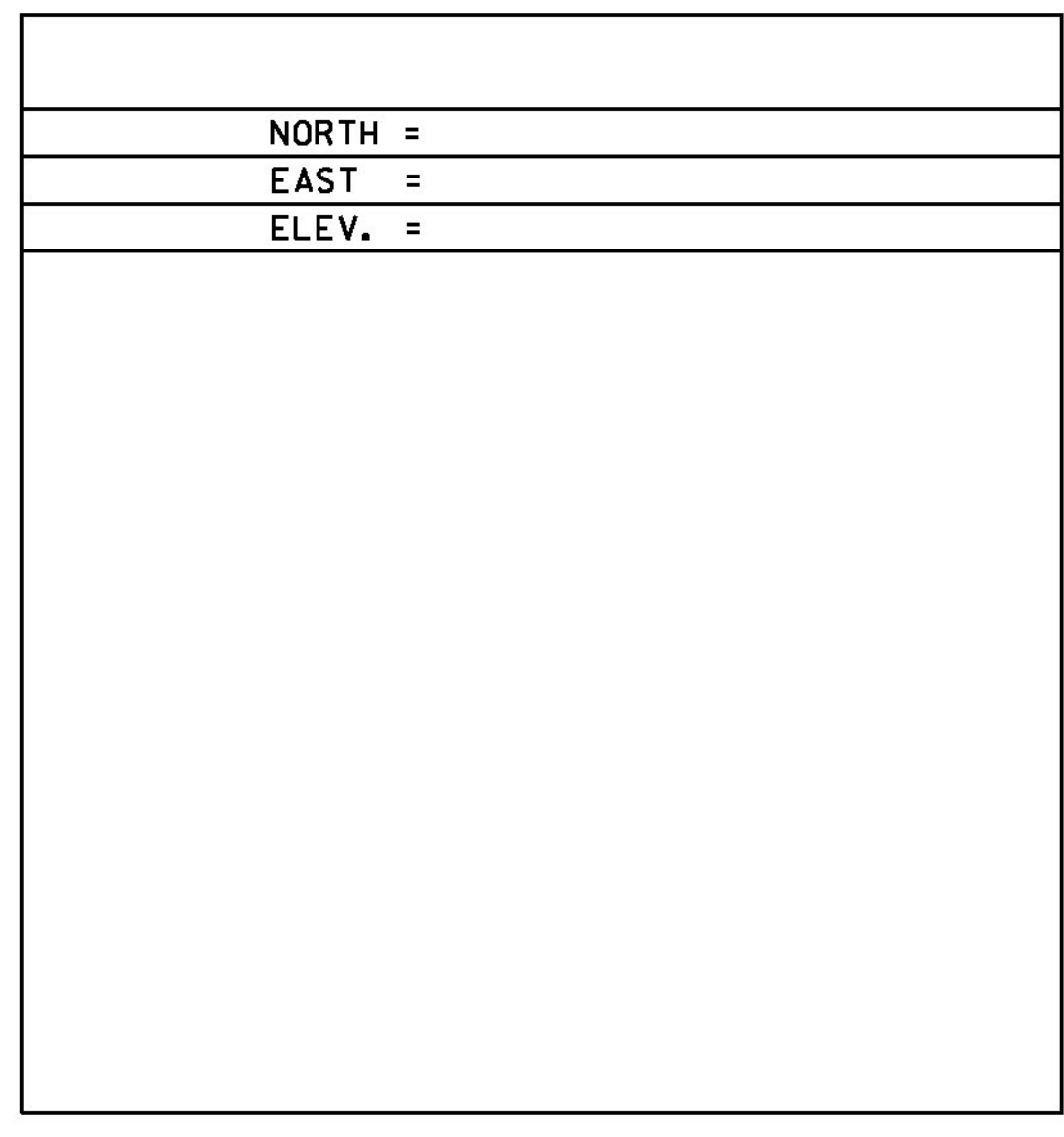
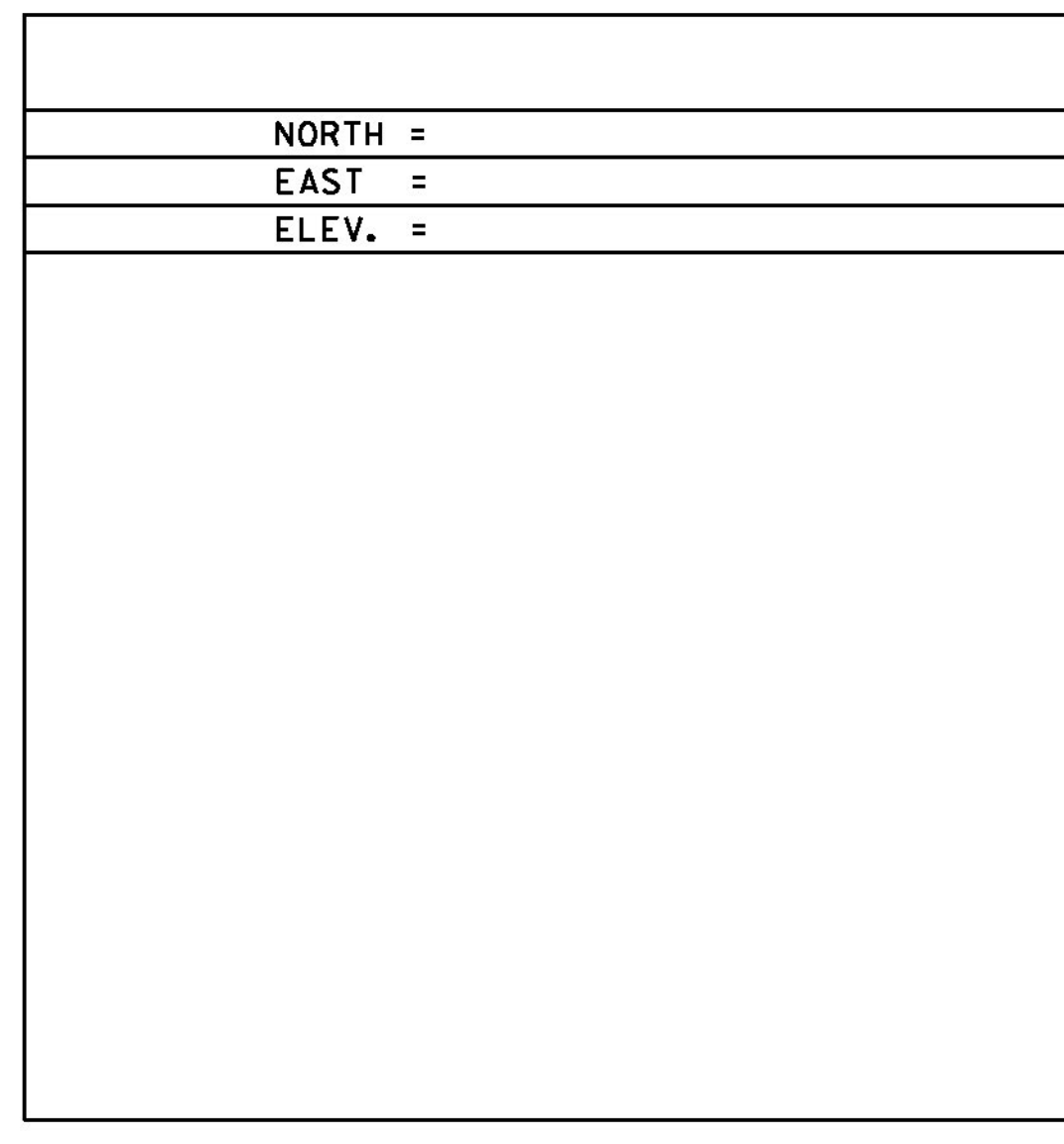
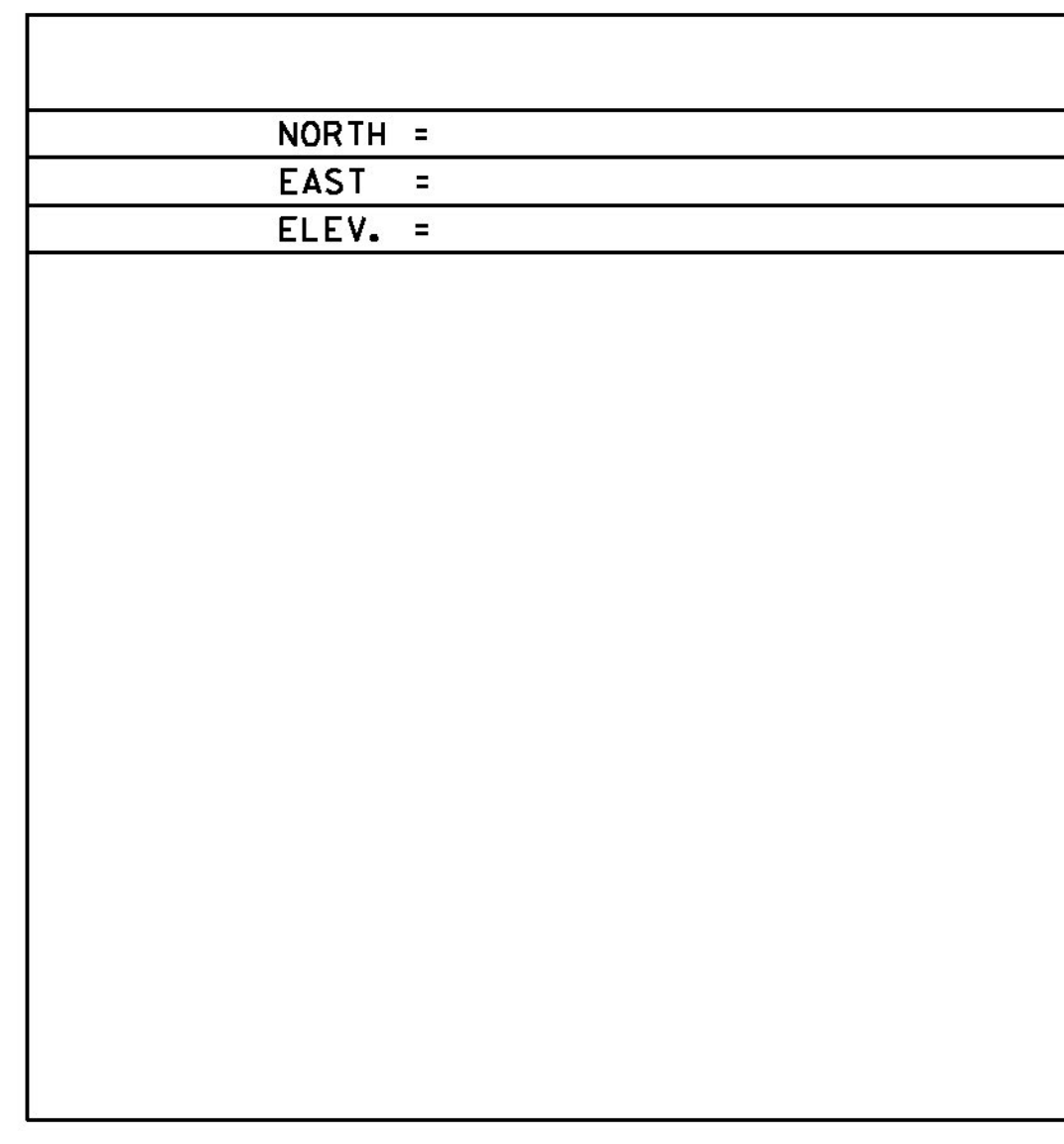
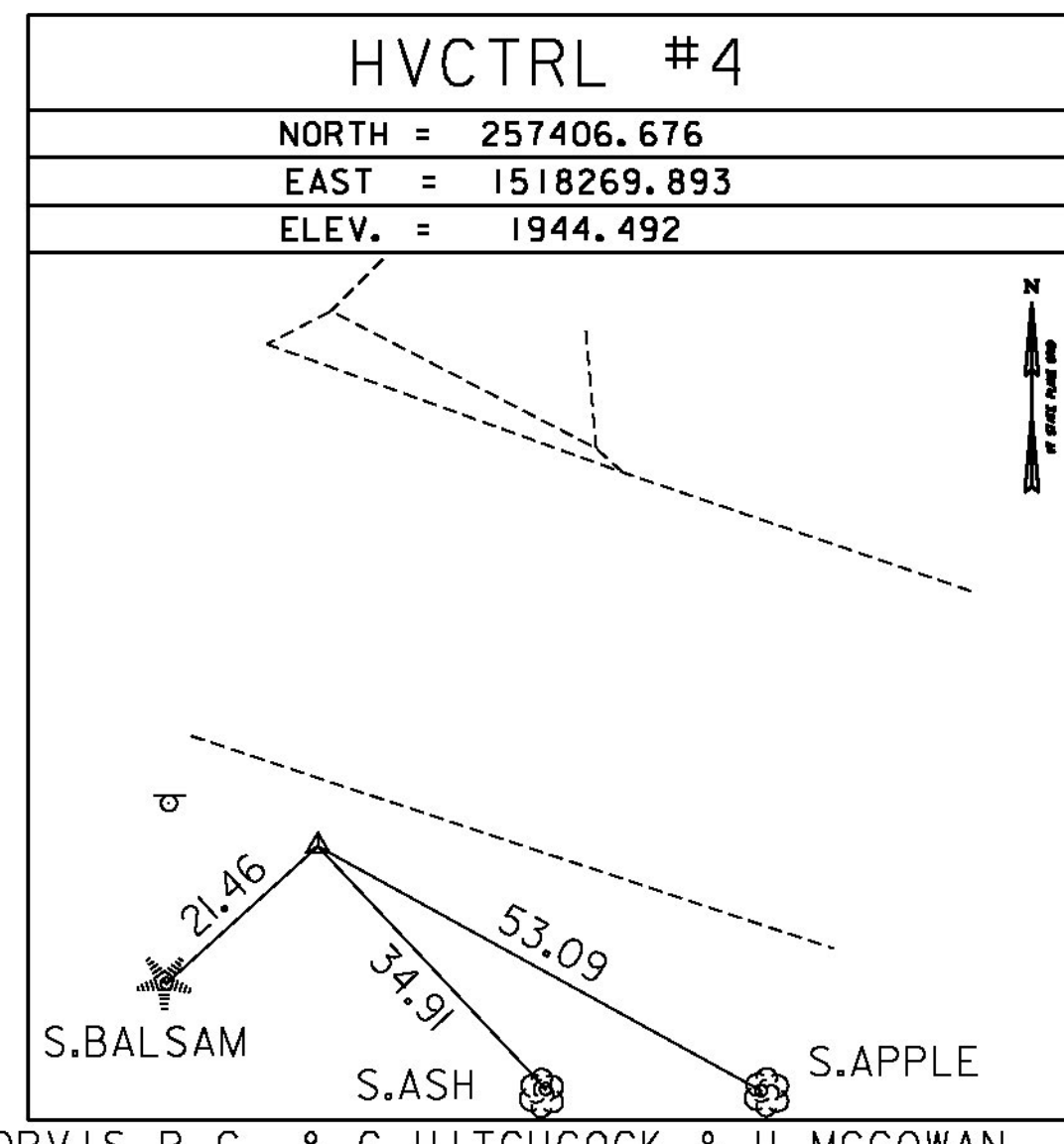
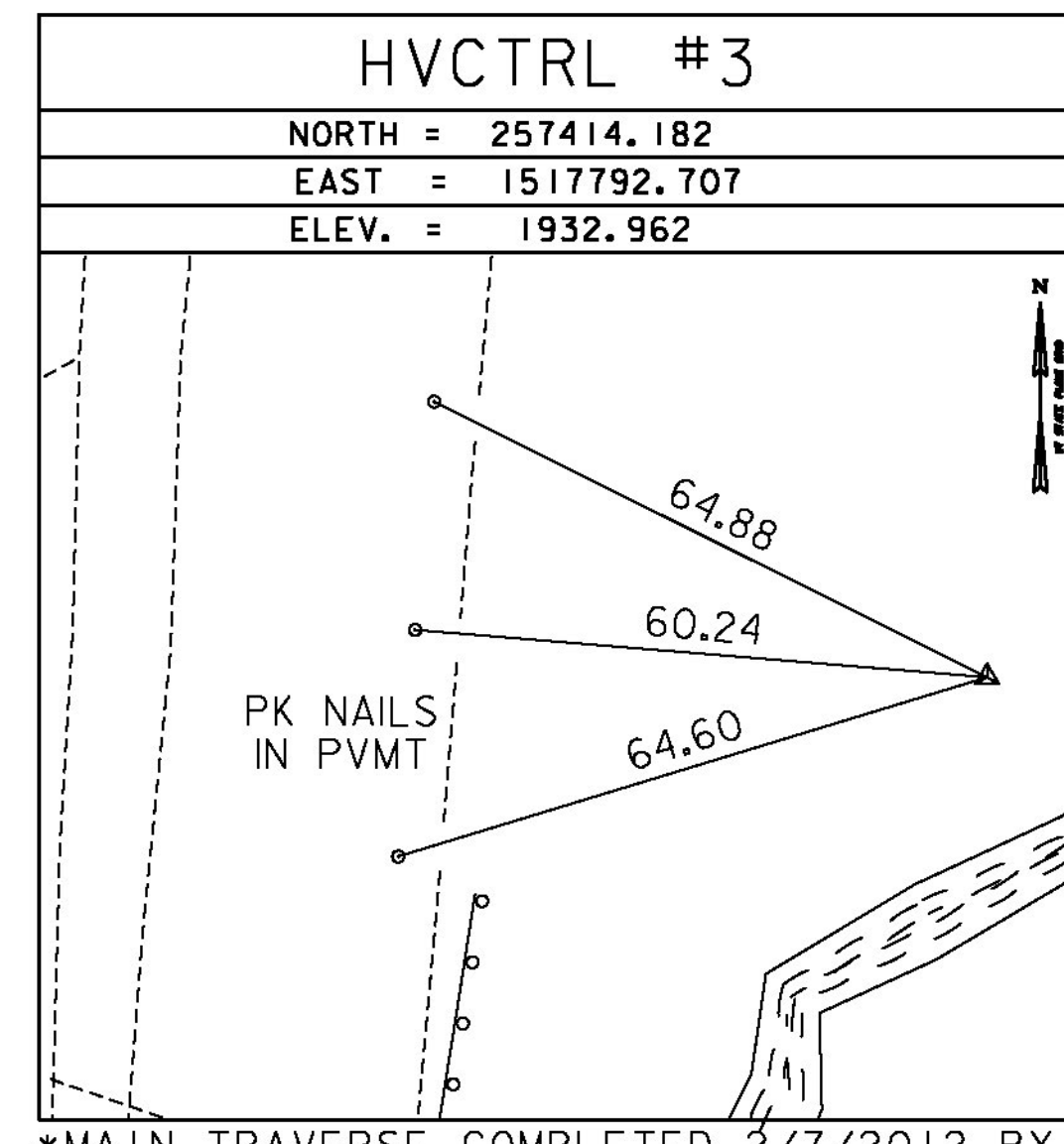
HVCTRL #1  
 KANDAHAR  
 NORTH = 257168.933  
 EAST = 1519322.268  
 ELEV. = 1973.695

GENERAL LOCATION, WINHALL, VT.  
 TO REACH FROM THE INTERSECTION OF VT ROUTES 30 AND 11 IN WINHALL GO EAST ALONG VT ROUTE 11 FOR 0.3 MILE (0.5 KM) TO THE SITE OF THE MARK ON THE RIGHT AT A SMALL PULLOUT. IT IS BENEATH A STEEL BEAM GUARD RAIL. THE MARK IS SET 10 CM BELOW GROUND SURFACE IN THE TOP OF A 30 CM DIAMETER CONCRETE MONUMENT POURED 0.9 M (3.0 FT) DEEP. IT IS 9.8 M (32.2 FT) SOUTH OF AND ABOUT LEVEL WITH THE CENTERLINE OF VT ROUTE 11, 36.4 M (119.4 FT) WEST OF THE CENTER OF THE SOUTH END OF A CONCRETE BOX CULVERT, AND 3.4 M (11.2 FT) NORTH OF A FIBERGLASS WITNESS POST.

HVCTRL #2  
 KANDAHAR AZ MK  
 NORTH = 257661.084  
 EAST = 1517400.380  
 ELEV. = 1936.681

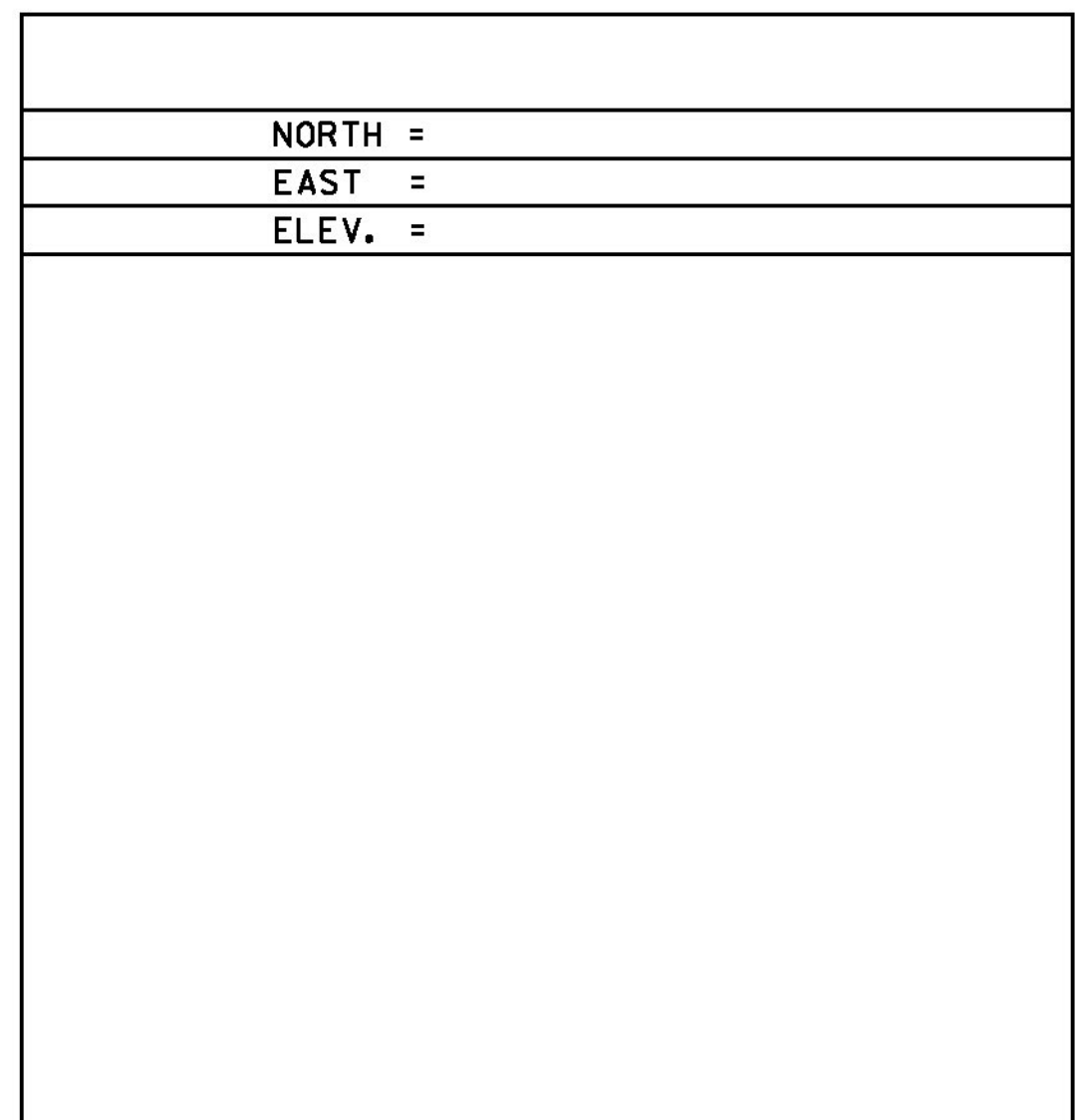
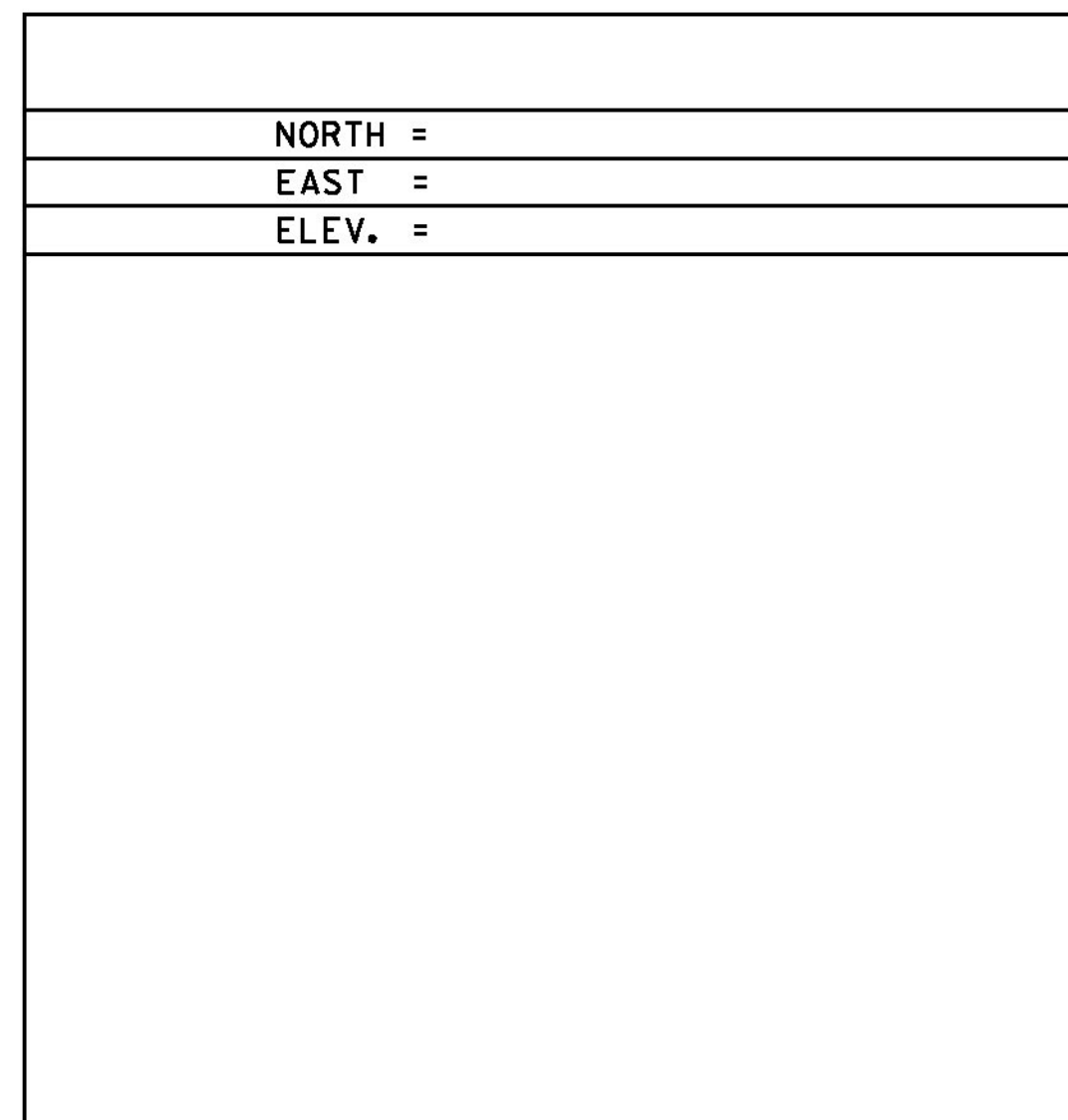
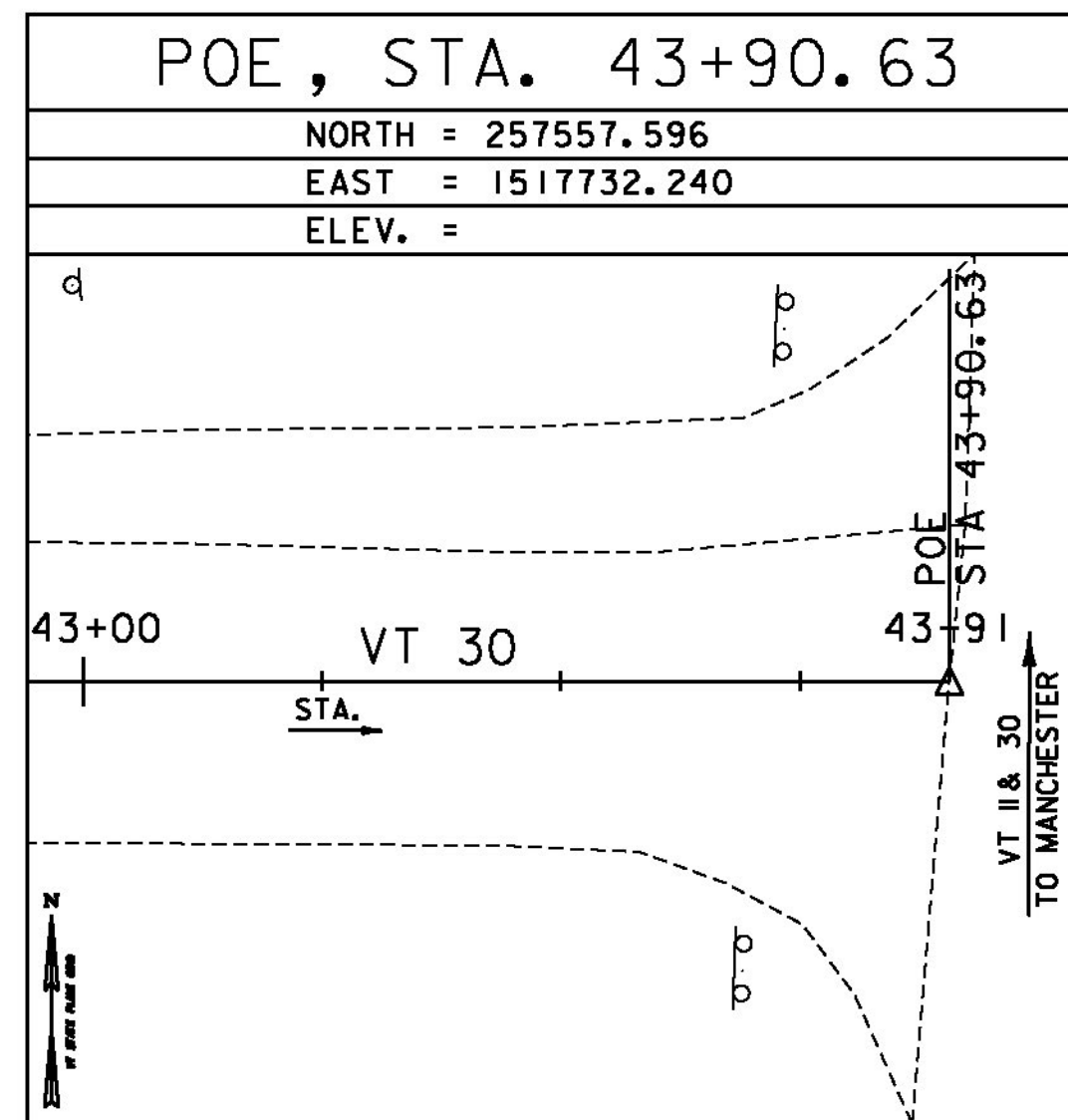
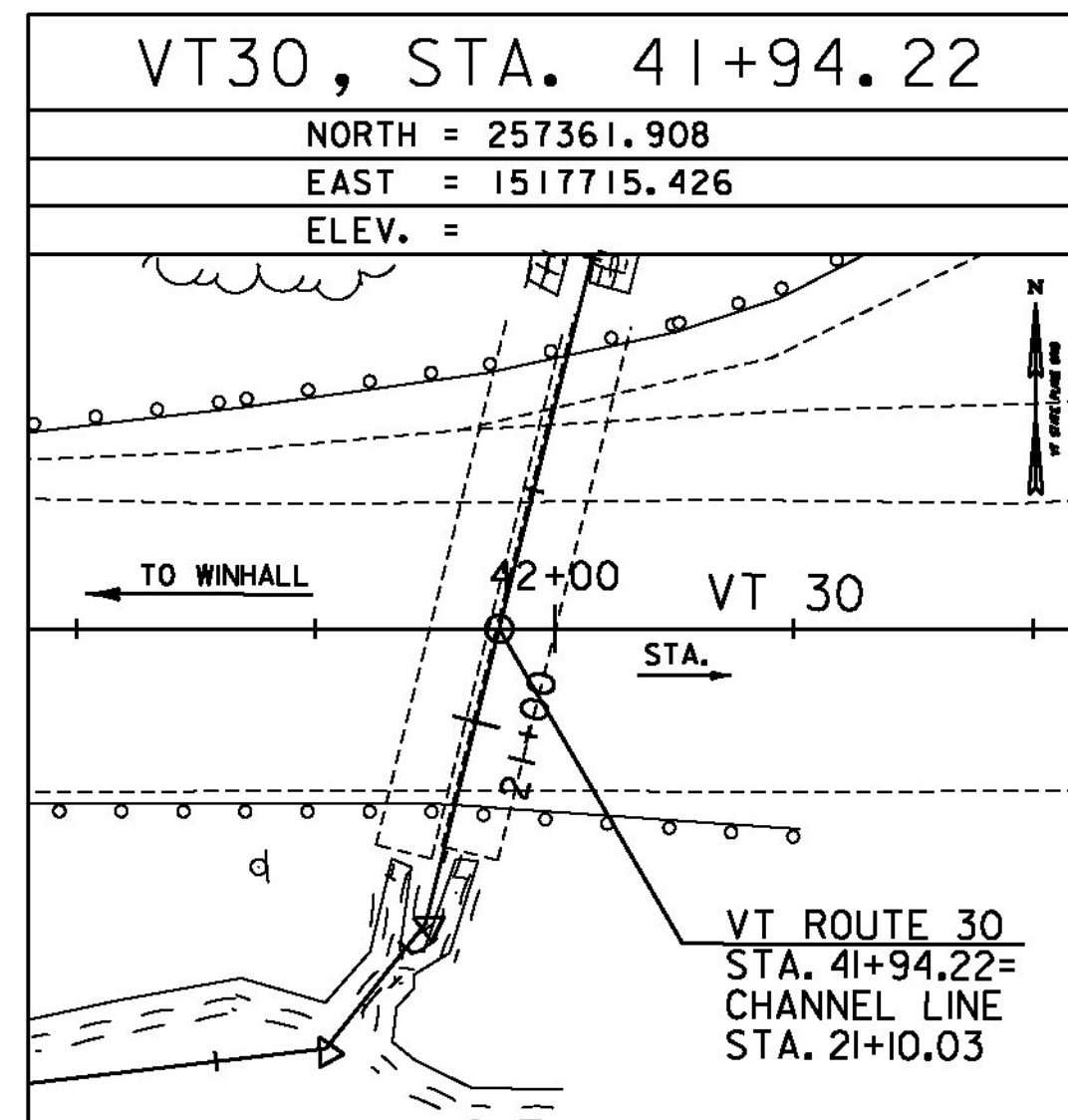
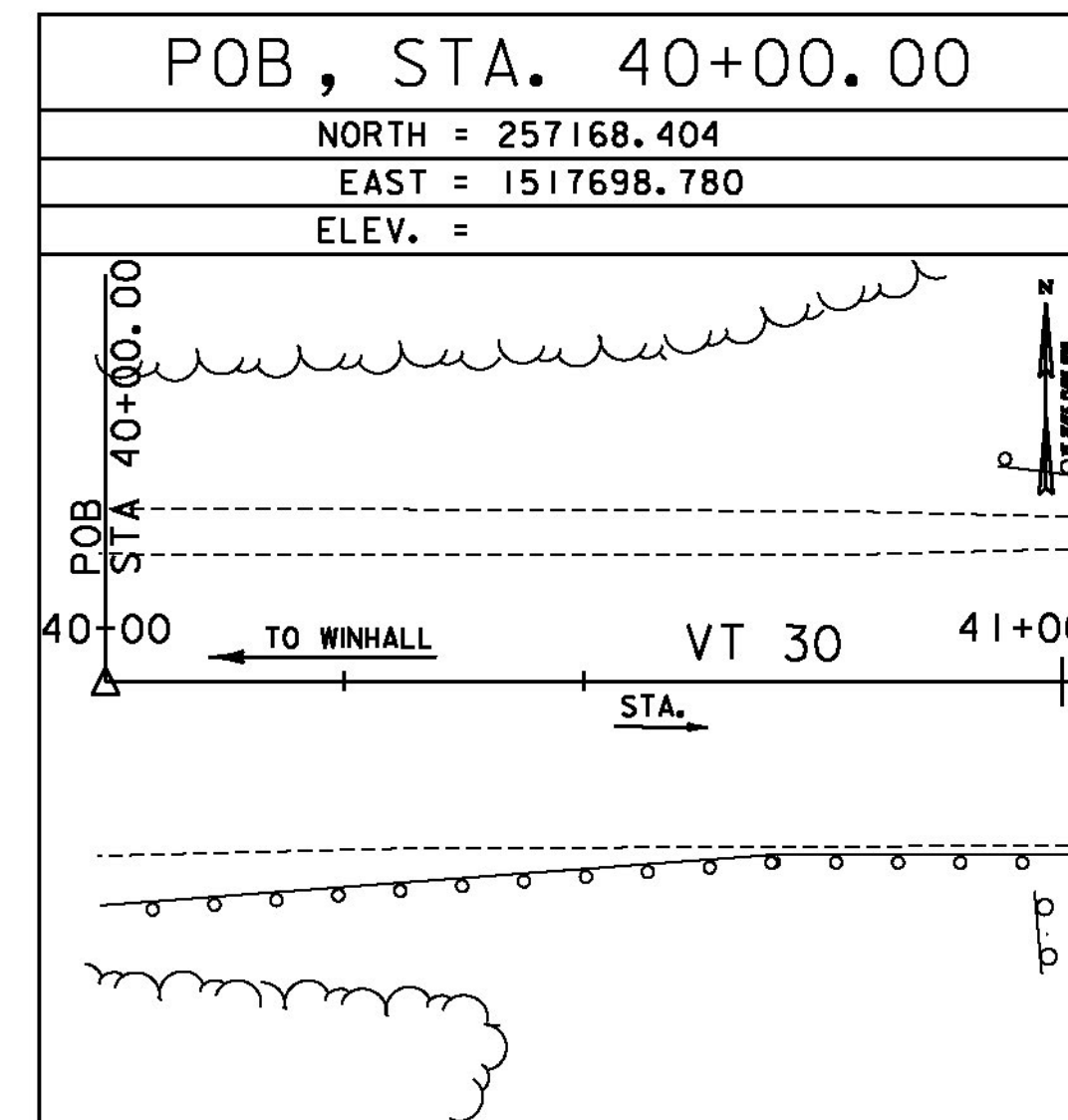
GENERAL LOCATION, WINHALL, VT.  
 THE MARK IS AT THE PINNACLE SUN AND SKI LODGE AT THE INTERSECTION OF VT ROUTES 11 AND 30 IN WINHALL. THE MARK IS A USFS CADASTRAL DISK SET IN THE TOP OF A 15 CM SQUARE MARBLE MONUMENT WHICH PROJECTS ABOUT 12 CM ABOVE GROUND SURFACE. IT IS 13.5 M (44.3 FT) SOUTH OF SOUTH FACE OF THE PINNACLE SUN AND SKI LODGE, 5.8 M (19.0 FT) NORTHWEST OF THE SOUTHWEST CORNER OF A WOOD CRIB RETAINING WALL, 16.5 M (54.1 FT) NORTH OF THE SOUTH END OF A CONCRETE BOX CULVERT, AND 3.4 M (11.2 FT) NORTH OF A FIBERGLASS WITNESS POST.

TRAVERSE TIES



\*MAIN TRAVERSE COMPLETED 2/7/2012 BY L. ORVIS P.C. & G. HITCHCOCK & H. MCGOWAN

ALIGNMENT TIES



DATUM	
VERTICAL	NAVD 88
HORIZONTAL	NAD83(07)
ADJUSTMENT	COMPASS



PROJECT NAME:	WINHALL
PROJECT NUMBER:	STP CULV(31)
FILE NAME:	z1lb268+1e_br52.dgn
PROJECT LEADER:	M. CHENETTE
DESIGNED BY:	J. HUNGERFORD
SURVEY CONTROL AND TIES - BR52	
PLOT DATE:	9/25/2014
DRAWN BY:	L. BUXTON
CHECKED BY:	M. CHENETTE
SHEET	38 OF 60