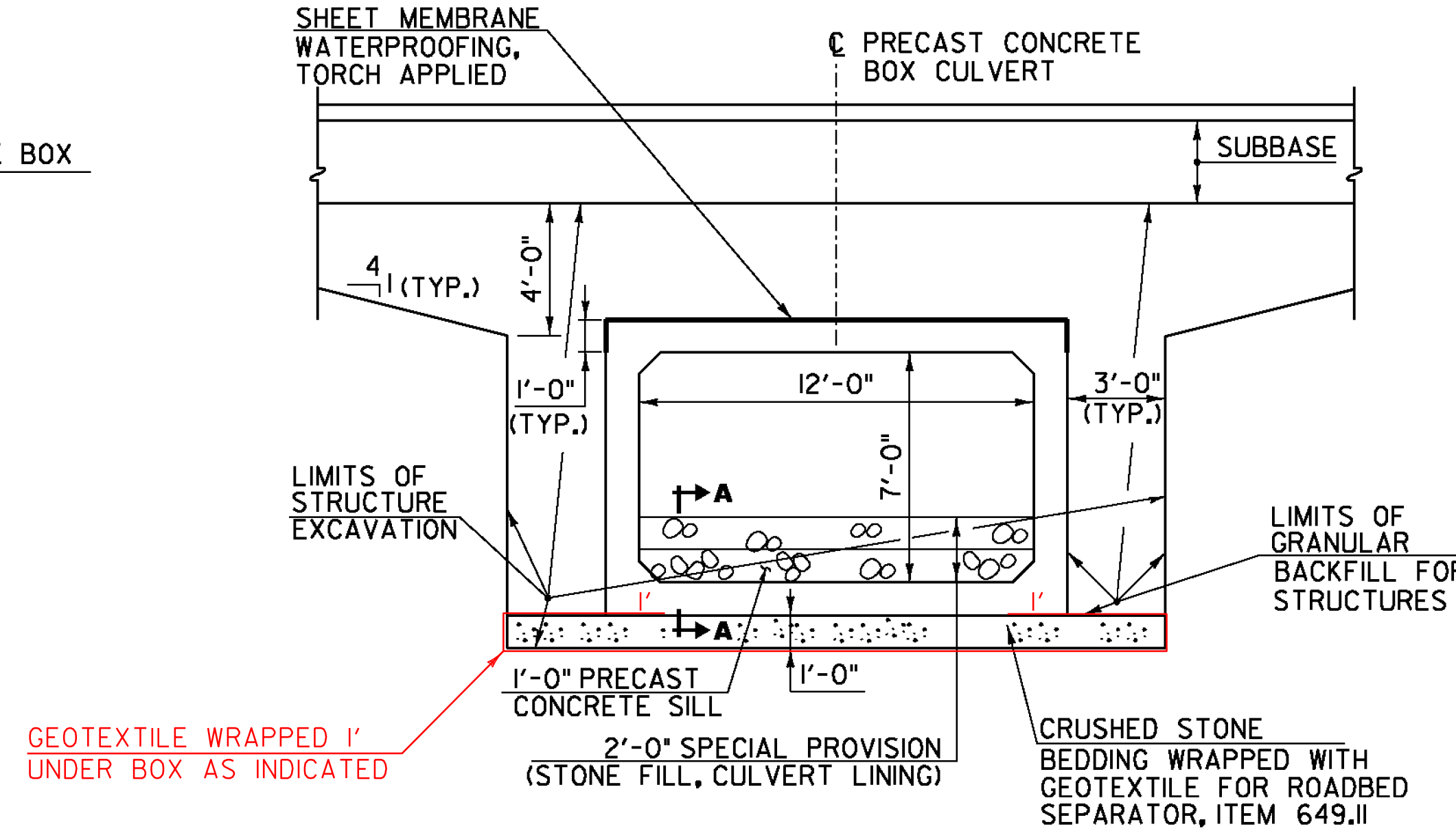


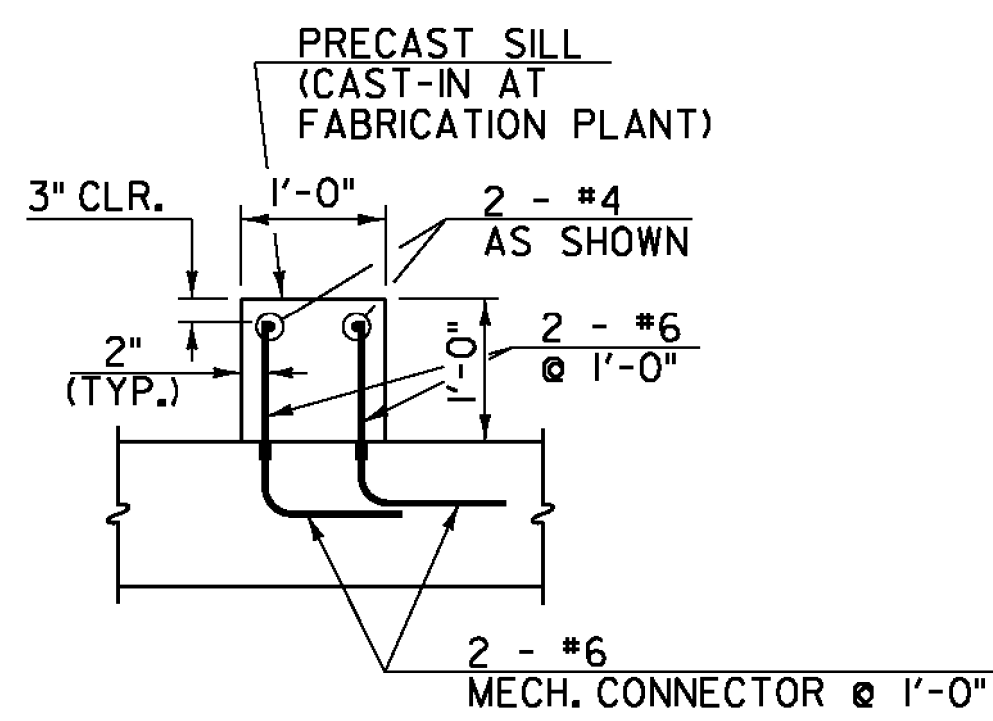
CHANNEL TYPICAL SECTION  
NOT TO SCALE

✱ WHENEVER CHANNEL SLOPE INTERSECTS ROADWAY SUBBASE, GRUBBING MATERIAL SHALL BEGIN AT THE BOTTOM OF SUBBASE.

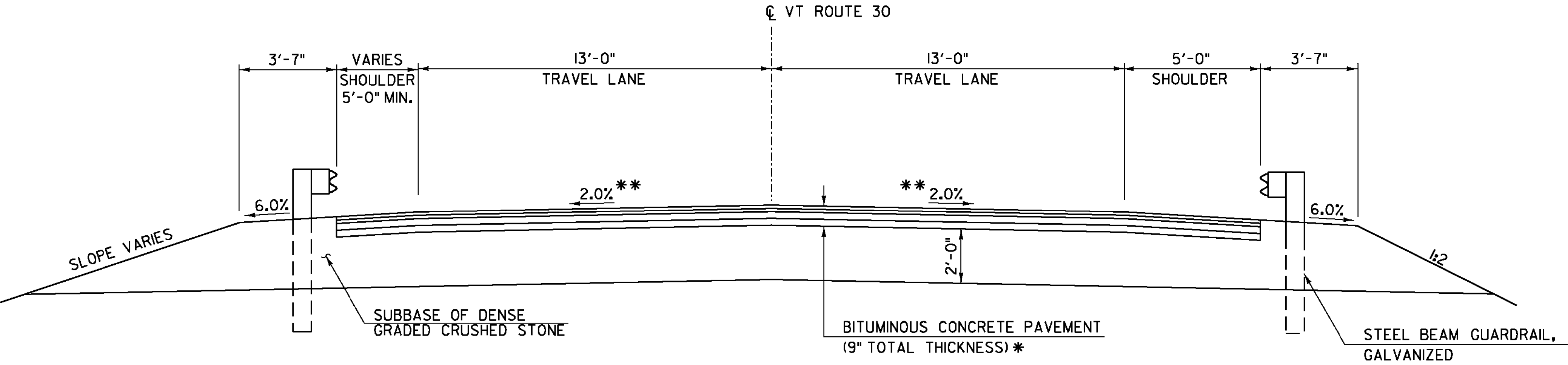
TYPICAL APPROACH SECTION - BR52  
NOT TO SCALE



PRECAST CONCRETE BOX TYPICAL SECTION - BR52  
SCALE: 1/4" = 1'-0"



SECTION A-A  
NOT TO SCALE



BR52 TYPICAL ROADWAY SECTION  
SCALE 3/8" = 1'-0"

\* BITUMINOUS CONCRETE PAVEMENT:  
1/2" TYPE IVS OVER  
1/2" TYPE IVS OVER  
3" TYPE IIS OVER  
3" TYPE IIS

MATERIAL TOLERANCES  
(IF USED ON PROJECT)

SURFACE	
- PAVEMENT (TOTAL THICKNESS)	+/- 1/4"
- AGGREGATE SURFACE COARSE	+/- 1/2"
SUBBASE	+/- 1"
SAND BORROW	+/- 1"

\*\* MATCH EXISTING IN APPROACHES

PROJECT NAME: WINHALL  
PROJECT NUMBER: STP CULV(31)  
FILE NAME: zlb268typsec.dgn  
PROJECT LEADER: M. CHENETTE  
DESIGNED BY: J. HUNGERFORD  
TYPICAL SECTIONS - BR52  
PLOT DATE: 9/25/2014  
DRAWN BY: L. BUXTON  
CHECKED BY: M. CHENETTE  
SHEET 37 OF 60

