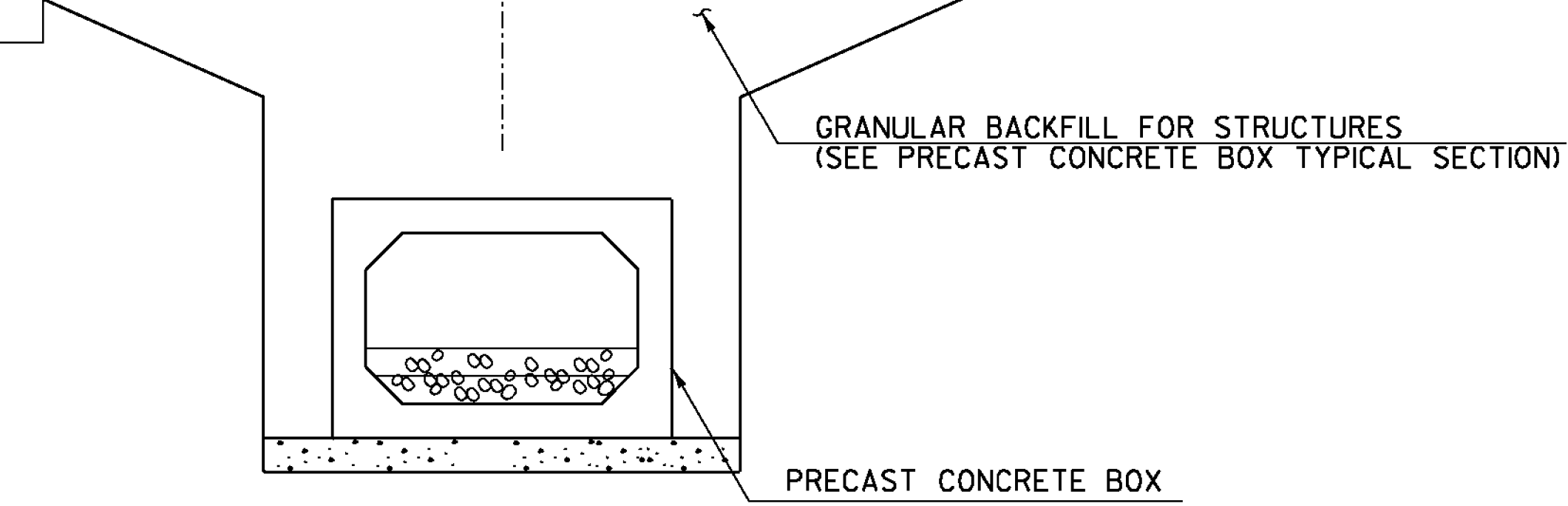
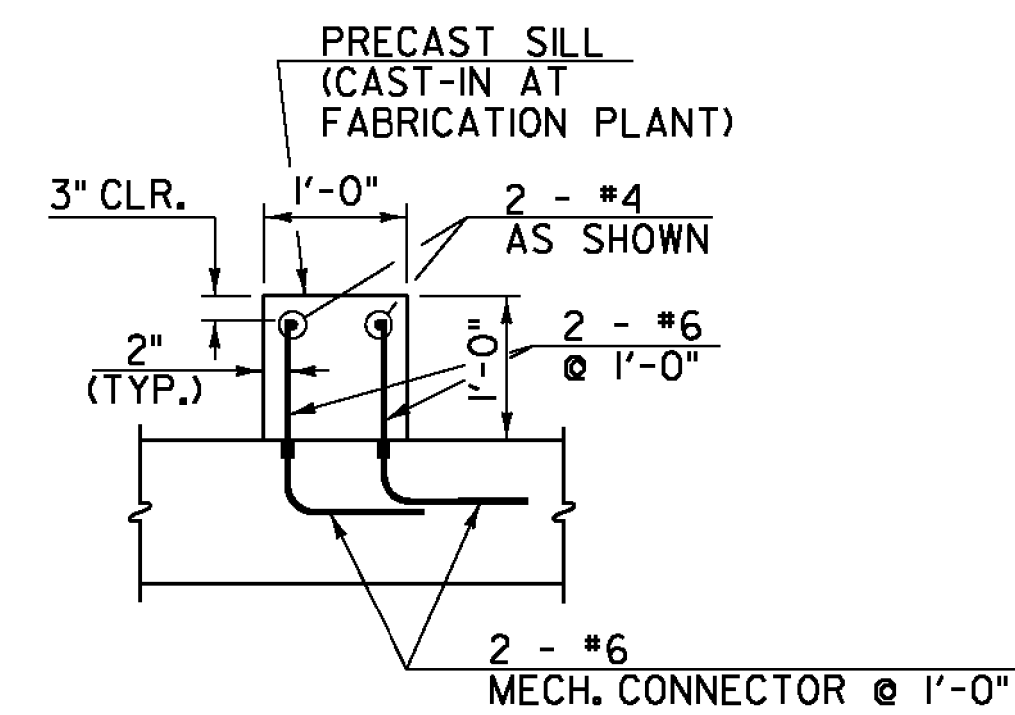


CHANNEL TYPICAL SECTION  
NOT TO SCALE

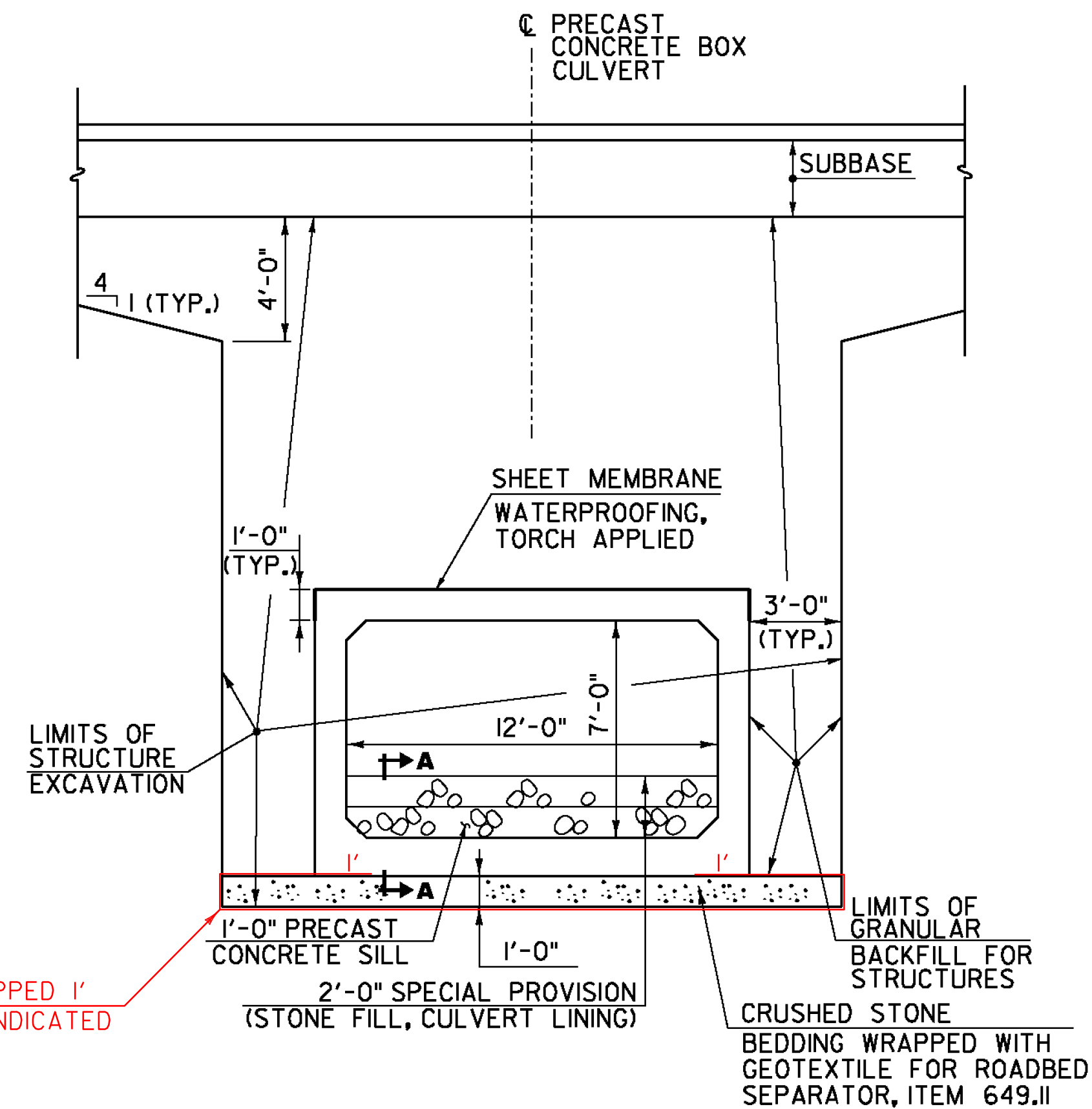
⊗ WHENEVER CHANNEL SLOPE INTERSECTS ROADWAY SUBBASE, GRUBBING MATERIAL SHALL BEGIN AT THE BOTTOM OF SUBBASE.



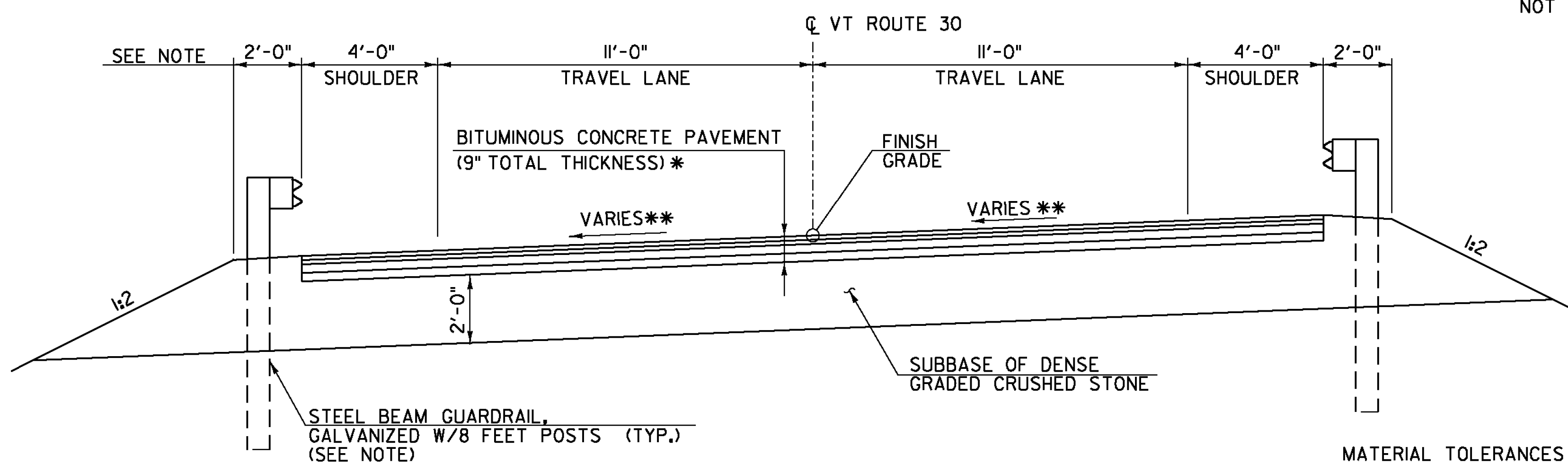
TYPICAL APPROACH SECTION - BR47  
NOT TO SCALE



SECTION A-A  
NOT TO SCALE



PRECAST CONCRETE BOX TYPICAL SECTION - BR47  
SCALE: 1/4" = 1'-0"



BR47 TYPICAL ROADWAY SECTION

SCALE 3/8" = 1'-0"

MATERIAL TOLERANCES  
(IF USED ON PROJECT)

SURFACE	
- PAVEMENT (TOTAL THICKNESS)	+/- 1/4"
- AGGREGATE SURFACE COARSE	+/- 1/2"
SUBBASE	+/- 1"
SAND BORROW	+/- 1"

\* BITUMINOUS CONCRETE PAVEMENT:

- 1 1/2" TYPE IVS OVER
- 1 1/2" TYPE IVS OVER
- 3" TYPE IIS OVER
- 3" TYPE IIS

NOTE:  
GUARDRAIL END TERMINALS REQUIRE STEEL BEAM GUARDRAIL GALVANIZED AND SHALL HAVE 3'-7" BACKING. SEE STANDARD GI-D

\*\* SEE BANKING DIAGRAM ON SHEET 15, MATCH EXISTING CROSS SLOPE ON APPROACHES.



PROJECT NAME: WINHALL  
PROJECT NUMBER: STP CULV(31)

FILE NAME: z1lb268typsec.dgn  
PROJECT LEADER: M. CHENETTE  
DESIGNED BY: J. HUNGERFORD  
TYPICAL SECTIONS - BR47

PLOT DATE: 9/25/2014  
DRAWN BY: L. BUXTON  
CHECKED BY: M. CHENETTE  
SHEET 12 OF 60