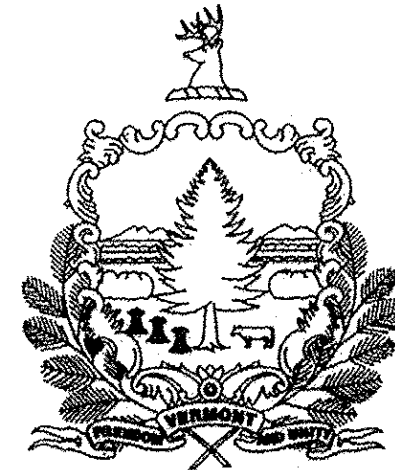
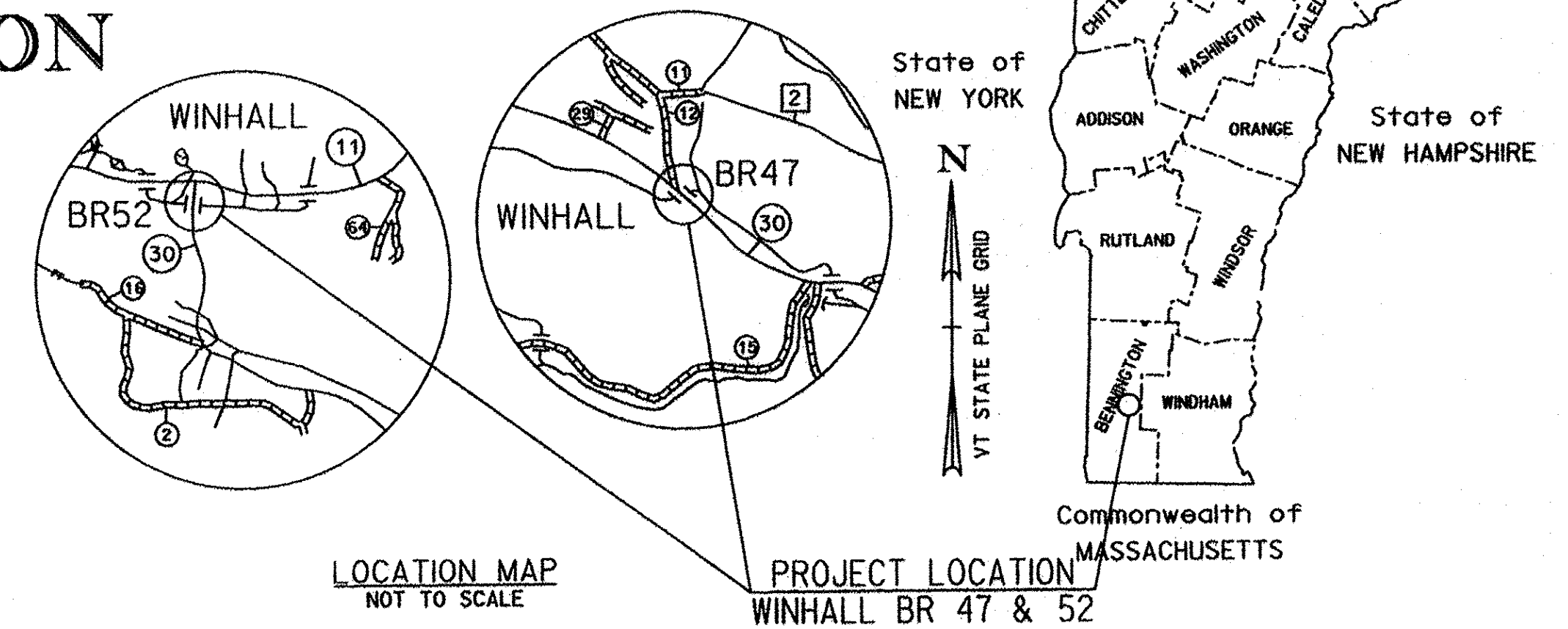


STATE OF VERMONT AGENCY OF TRANSPORTATION



PROPOSED IMPROVEMENT BRIDGE PROJECT TOWN OF WINHALL COUNTY OF BENNINGTON VT ROUTE 30 (MAJOR COLLECTOR) BRIDGE NUMBERS 47 AND 52

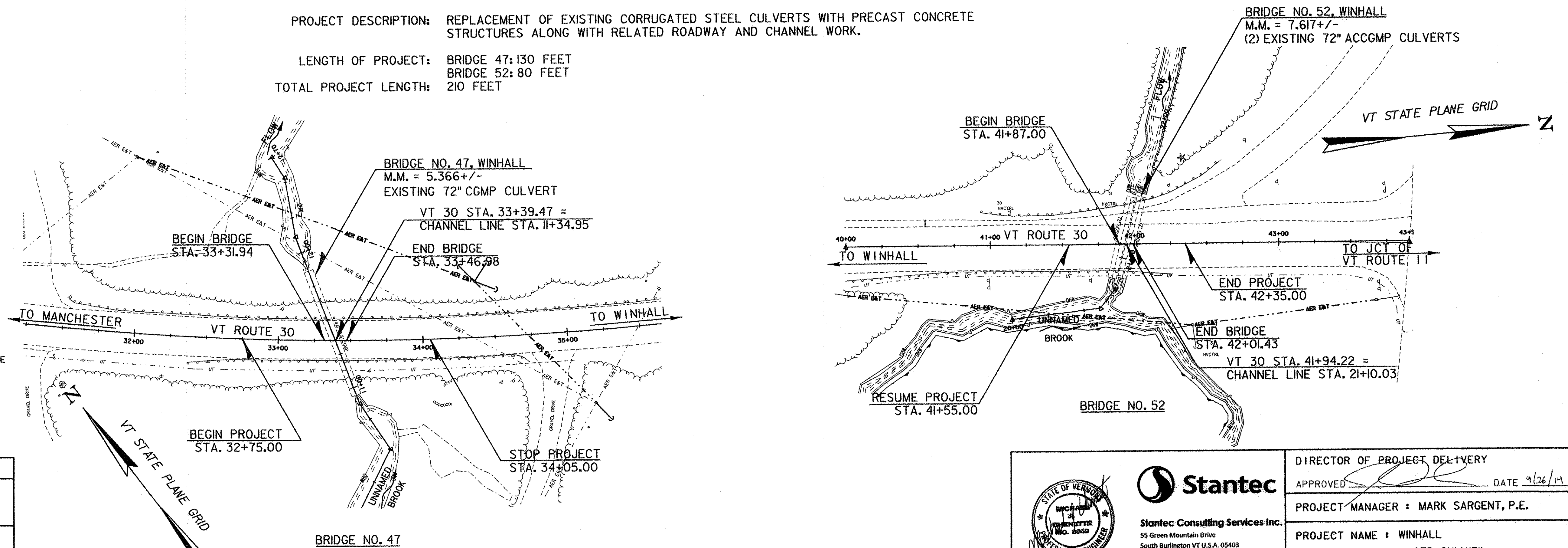


RECORD PLANS	
CONTRACTOR:	RENAUD BROTHERS, INC. - VERNON, VT
RESIDENT ENGINEER:	RON LEMAIRE
CONSTRUCTION BEGAN:	MAY 12, 2015
CONSTRUCTION COMPLETE:	OCTOBER 8, 2015
RECORD PLANS BY:	RON LEMAIRE & AARON JAMES
I HEREBY CERTIFY THAT ALL THE CONSTRUCTION REQUIRED BY THIS SET OF DRAWINGS HAS BEEN ACCOMPLISHED AS INDICATED HEREIN.	
BY:	RESIDENT ENGINEER
DATE: 9/20/16	
NOTE: Any further information concerning final quantities, amounts or other details relative to this project may be found at Central Files in the electronic archives.	

PROJECT LOCATION: BRIDGE NO. 47 IS LOCATED ON VERMONT ROUTE 30, 2.3 MILES SOUTH OF THE JUNCTION WITH VERMONT ROUTE II.
BRIDGE NO. 52 IS LOCATED ON VERMONT ROUTE 30, 0.05 MILES SOUTH OF THE JUNCTION WITH VERMONT ROUTE II.

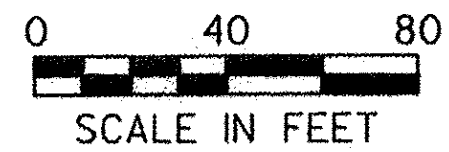
PROJECT DESCRIPTION: REPLACEMENT OF EXISTING CORRUGATED STEEL CULVERTS WITH PRECAST CONCRETE STRUCTURES ALONG WITH RELATED ROADWAY AND CHANNEL WORK.

LENGTH OF PROJECT: BRIDGE 47: 130 FEET
BRIDGE 52: 80 FEET
TOTAL PROJECT LENGTH: 210 FEET



CONSTRUCTION IS TO BE CARRIED ON IN ACCORDANCE WITH THESE PLANS AND THE STANDARD SPECIFICATIONS FOR CONSTRUCTION DATED 2011, AS APPROVED BY THE FEDERAL HIGHWAY ADMINISTRATION ON JULY 20, 2011 FOR USE ON THIS PROJECT, INCLUDING ALL SUBSEQUENT REVISIONS AND SUCH REVISED SPECIFICATIONS AND SPECIAL PROVISIONS AS ARE INCORPORATED IN THESE PLANS.

QUALITY ASSURANCE PROGRAM : LEVEL 2
SURVEYED BY : VTRANS
SURVEYED DATE : 02/01/2012
DATUM
VERTICAL NAVD88
HORIZONTAL NAD 83 (07)



		DIRECTOR OF PROJECT DELIVERY
	Stantec Consulting Services Inc. 55 Green Mountain Drive South Burlington VT U.S.A. 05403 Phone: (802) 864-0223 Fax: (802) 864-0165 www.stantec.com	APPROVED: DATE 9/26/14
		PROJECT-MANAGER : MARK SARGENT, P.E.
		PROJECT NAME : WINHALL
		PROJECT NUMBER : STP CULV(30)
		SHEET 1 OF 60 SHEETS