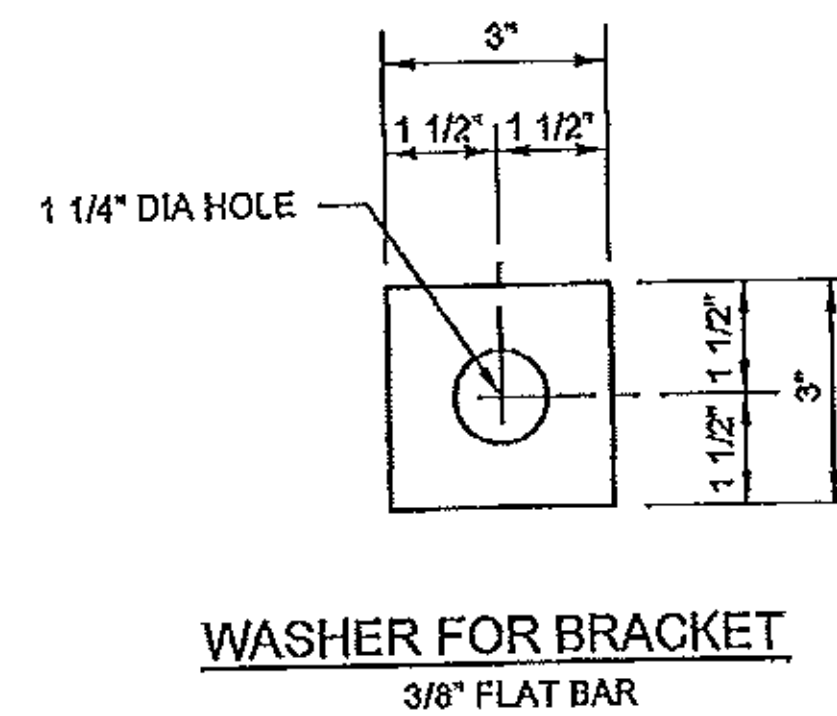
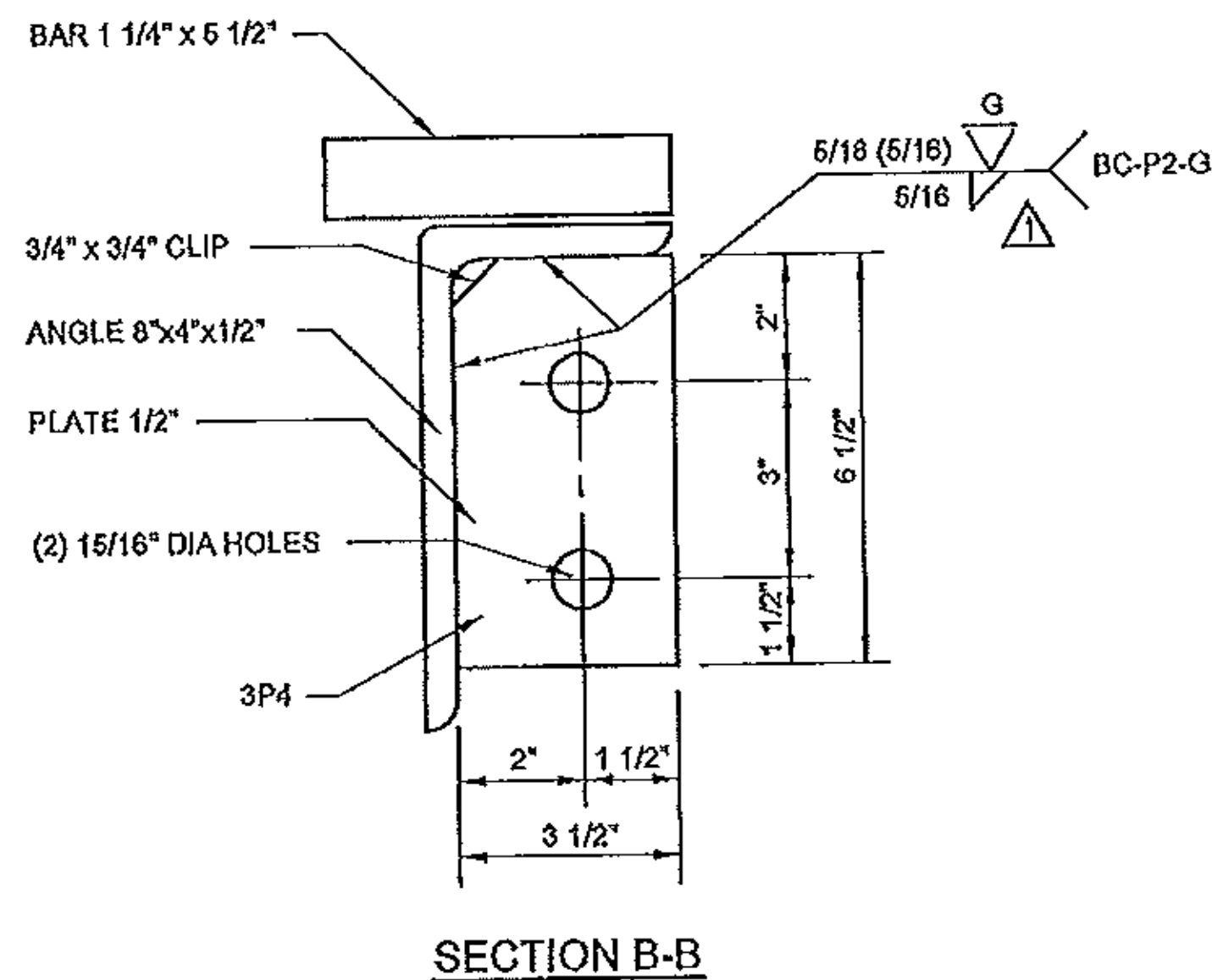
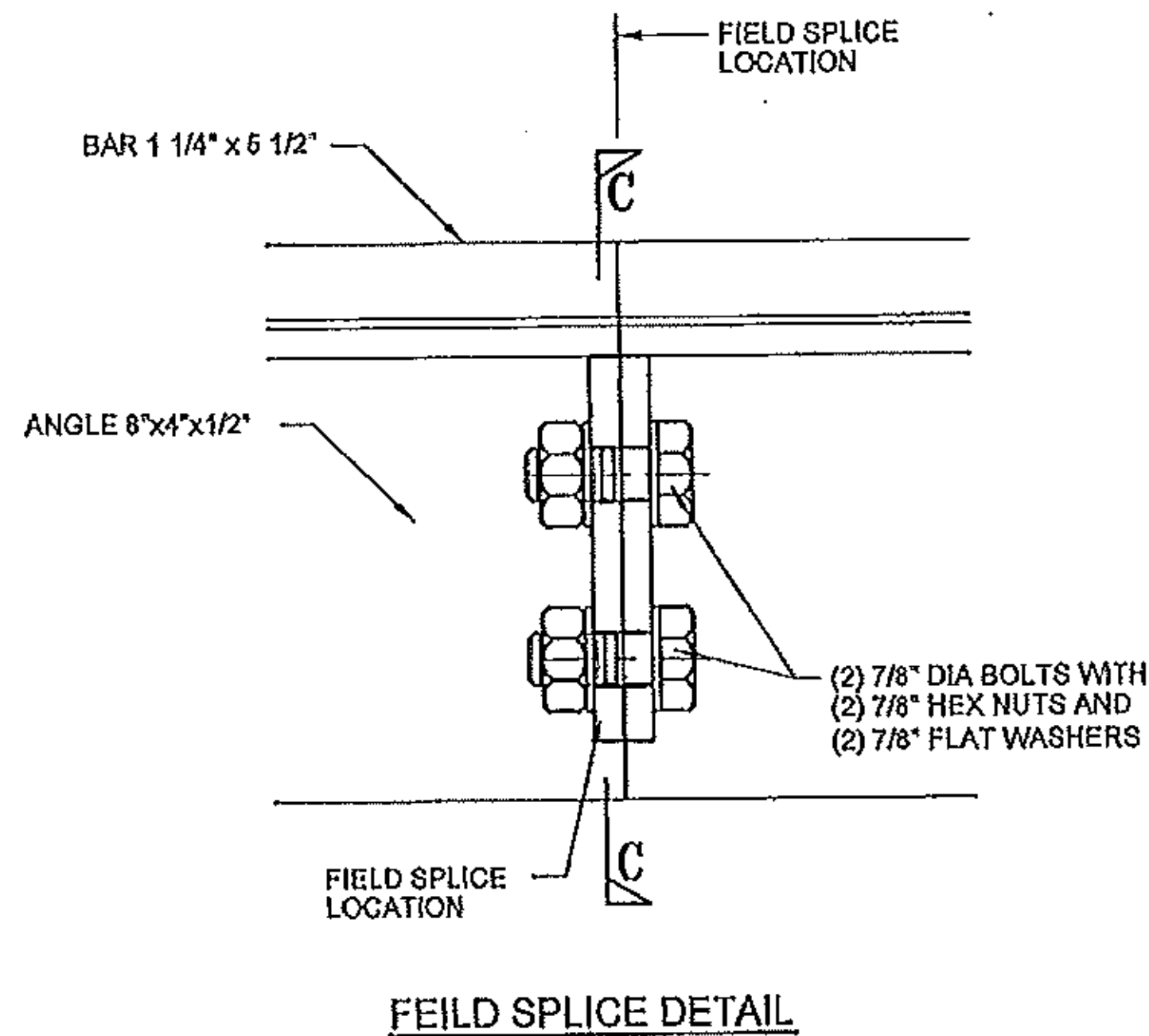
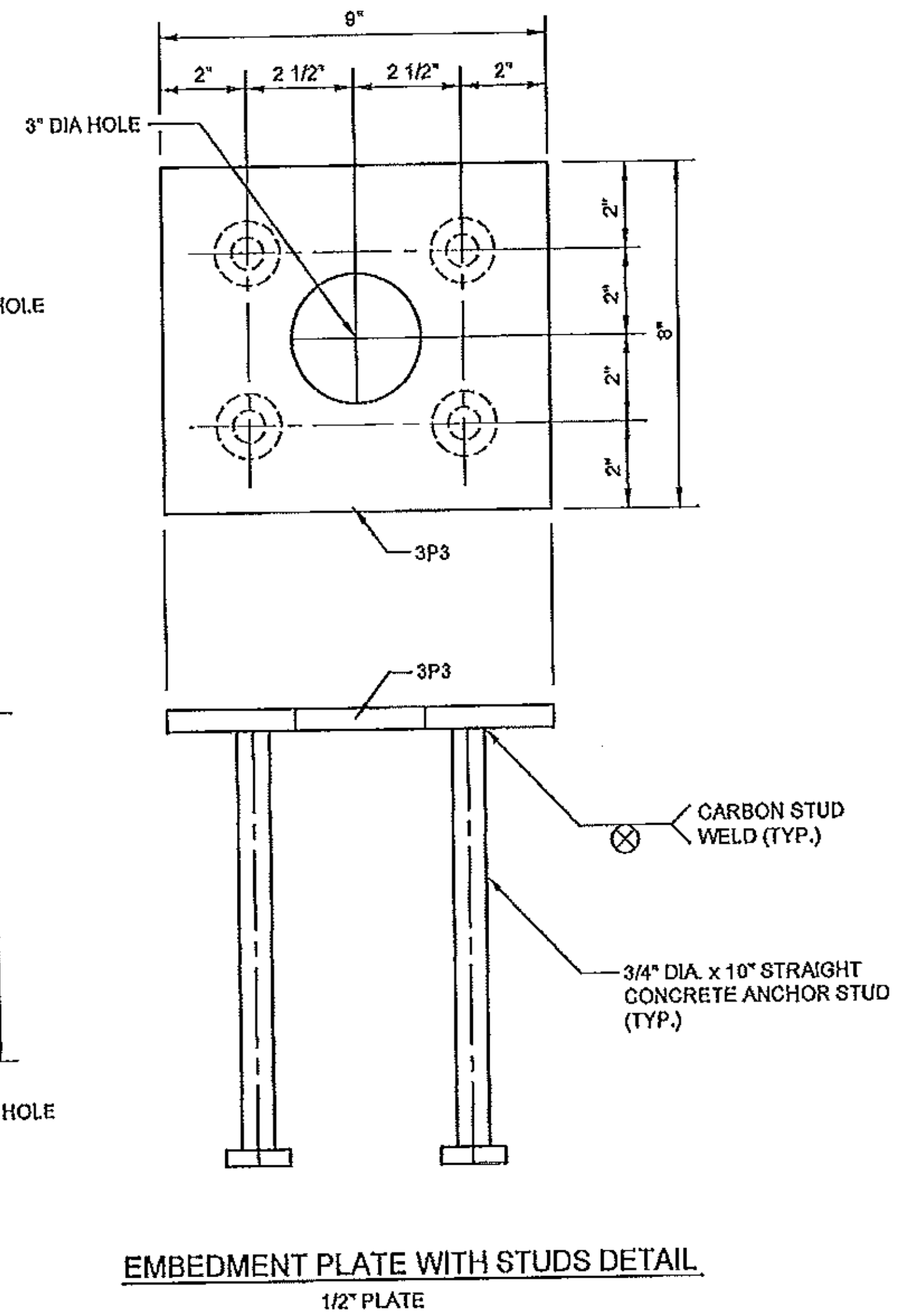
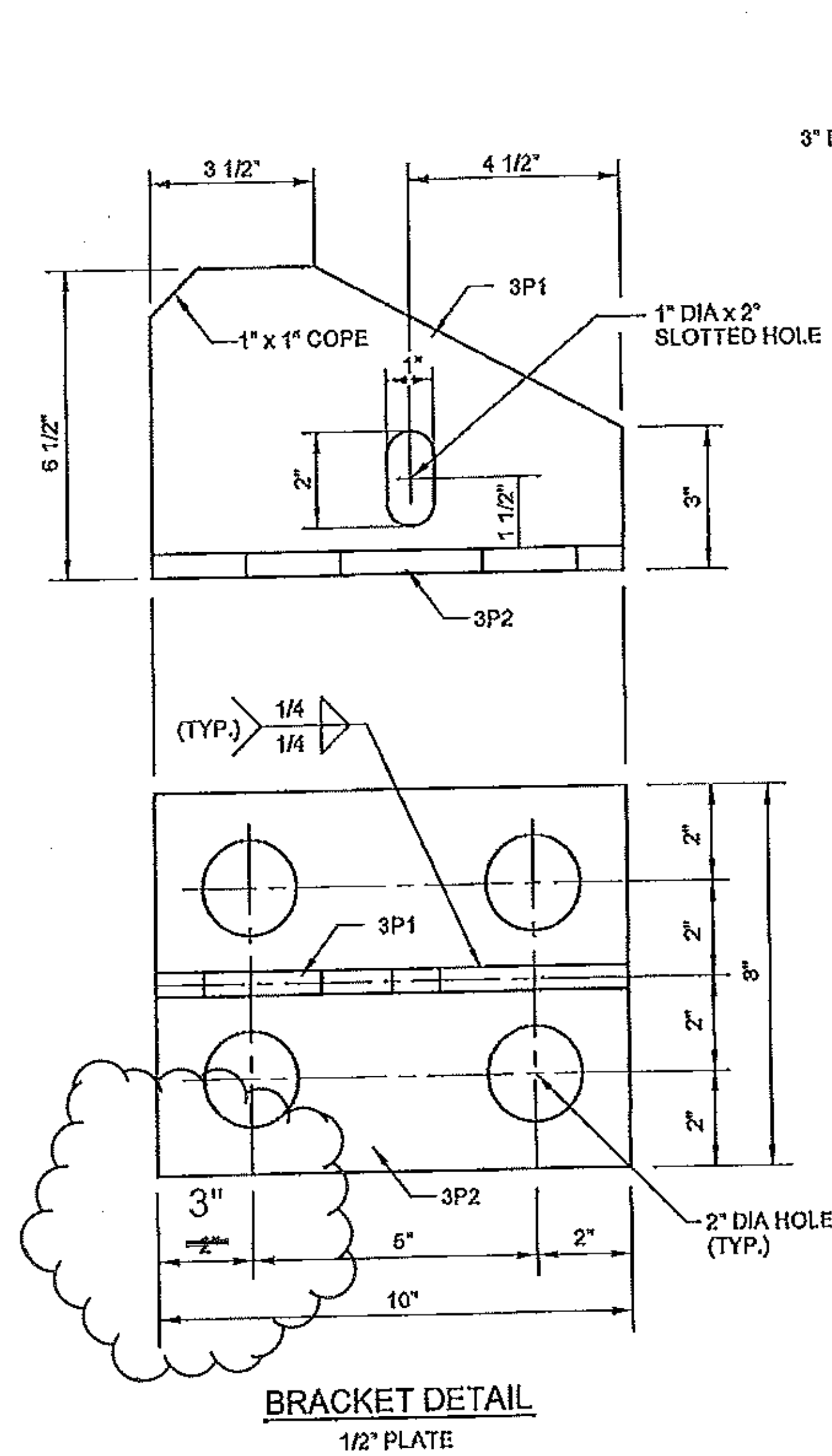
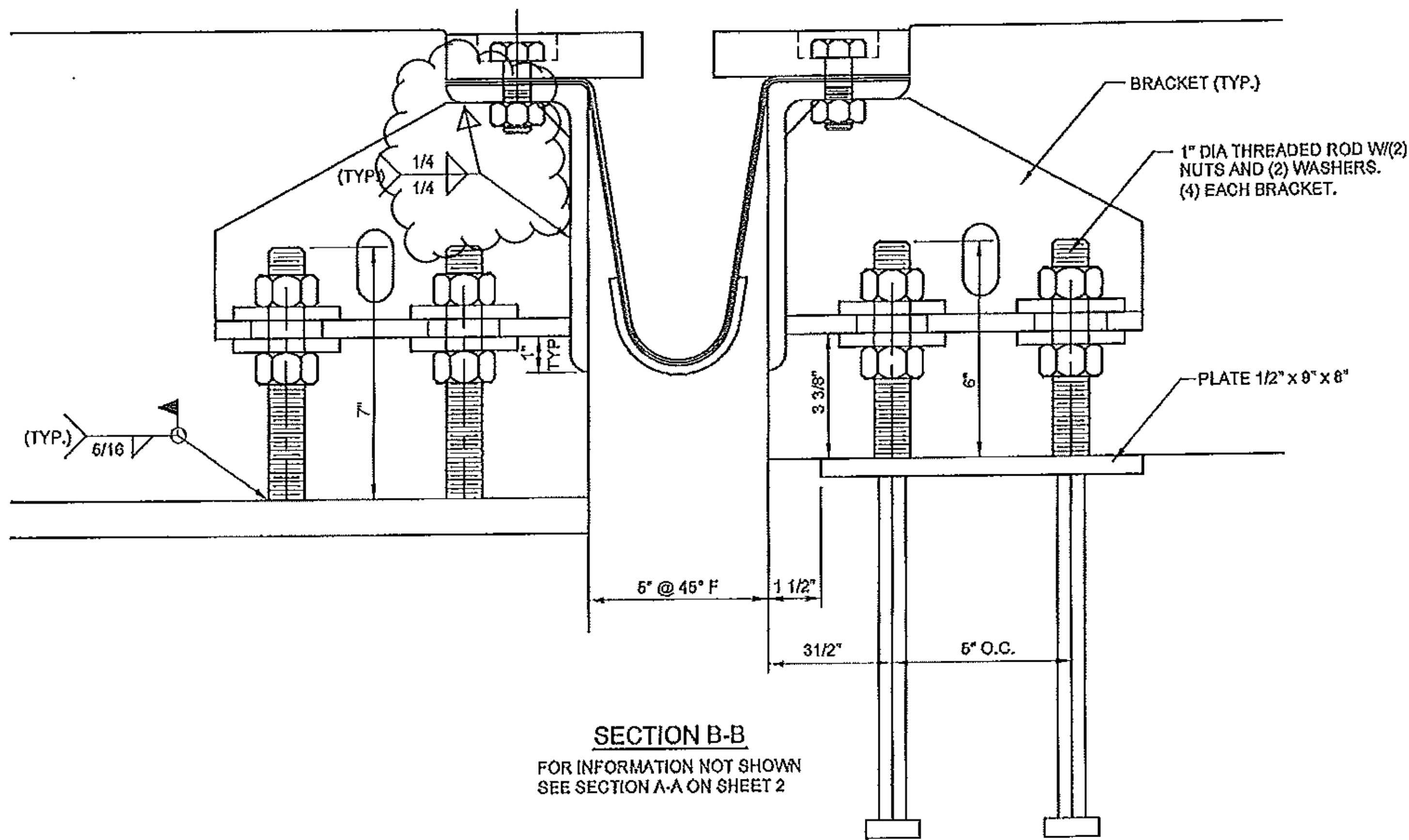


G:\Engineer\WBA Projects\143833-T Buck-Woodford ER BHF 050-Drawings\BSC08503.dwg, 8/21/2012 11:11:09 AM



Vermont Agency of Transportation

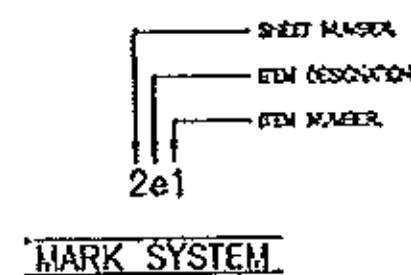
RECEIVED

CK'D BY M.E.M. OK'D BY C.W.M.

Aug. 21, 2012

RESUBMIT APPROVED AS NOTED
BY C. CARLSON DATE 09-05-2012

STATE: VERMONT
COUNTY: BENNINGTON
PROJECT NO.: ER BHF 010-1(44)
REFERENCE NO.: XXXXXXXXXX
DISTRICT: XXX ROUTE: XXX
WBA PRODUCT NO.: EMB143833AA



| DRAWING ACTION: | |
|-----------------|---------------------|
| 2e1 | REVISED WELD DETAIL |

| NO. | DESCRIPTION | DATE | BY |
|-----|---------------------|---------|-----|
| 1 | REVISED WELD DETAIL | 8-21-12 | JFW |

Watson Bowman Acme
The Original Company

PROJECT: WOODFORD
VT RT 9 BRIDGE NO. 11 OVER ROARING
BRANCH OF THE WALLOOMSAC RIVER
WABO PLATE JOINT W/NEOPRENE TROUGH DETAILS

| | | | |
|-------------|--------|--------------|---------|
| DESIGNED BY | JFW | DATE | 8-14-12 |
| CHECKED BY | KF | DATE | 8-14-12 |
| SCALE | NTS | WBA JOB NO. | 143833 |
| SHEET NO. | 3 OF 5 | DISTRICT NO. | B-30085 |