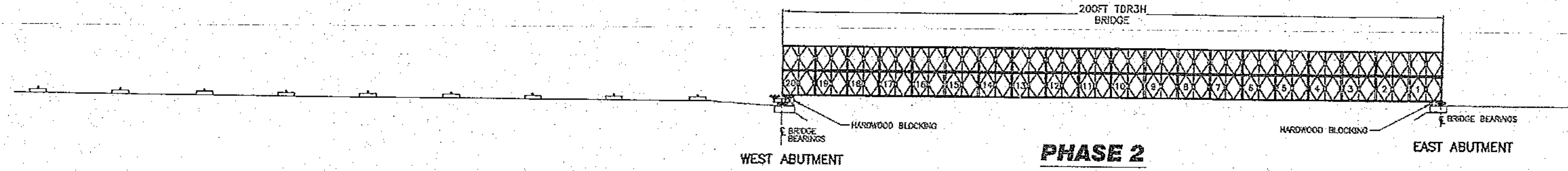
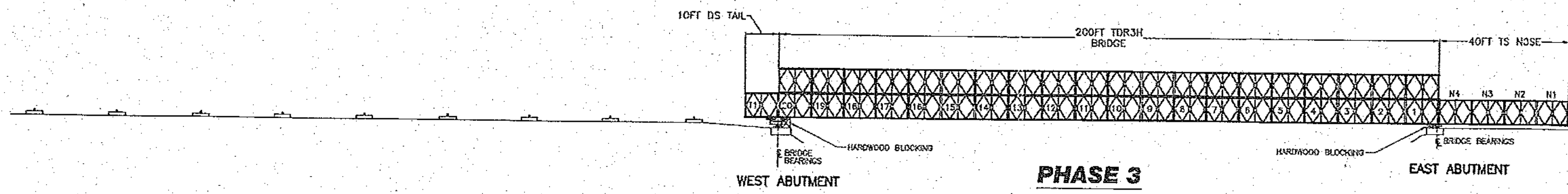


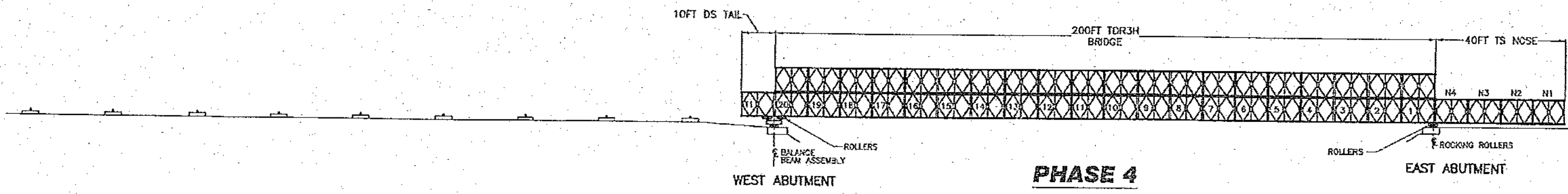
- PHASE 1**
- REMOVE ALL DECK PANELS & GUARDRAIL
 - INSTALL TAPER CHORDS
 - REMOVE THE BACKWALLS AND GRADE BUILD AREA BEHIND THE WEST ABUTMENT AND INSTALL PLAIN ROLLERS AS SHOWN IN THE DE-LAUNCH ROLLER LAYOUT



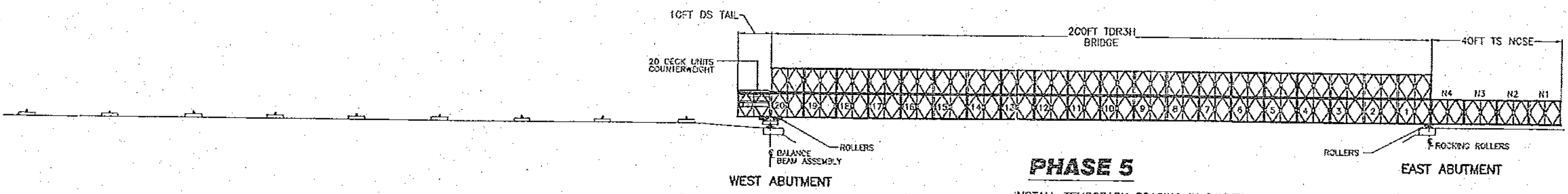
- PHASE 2**
- JACK UP BRIDGE AT EACH ABUTMENT HIGH ENOUGH TO INSTALL ROCKING ROLLERS
 - LOWER BRIDGE ONTO TEMPORARY BLOCKING



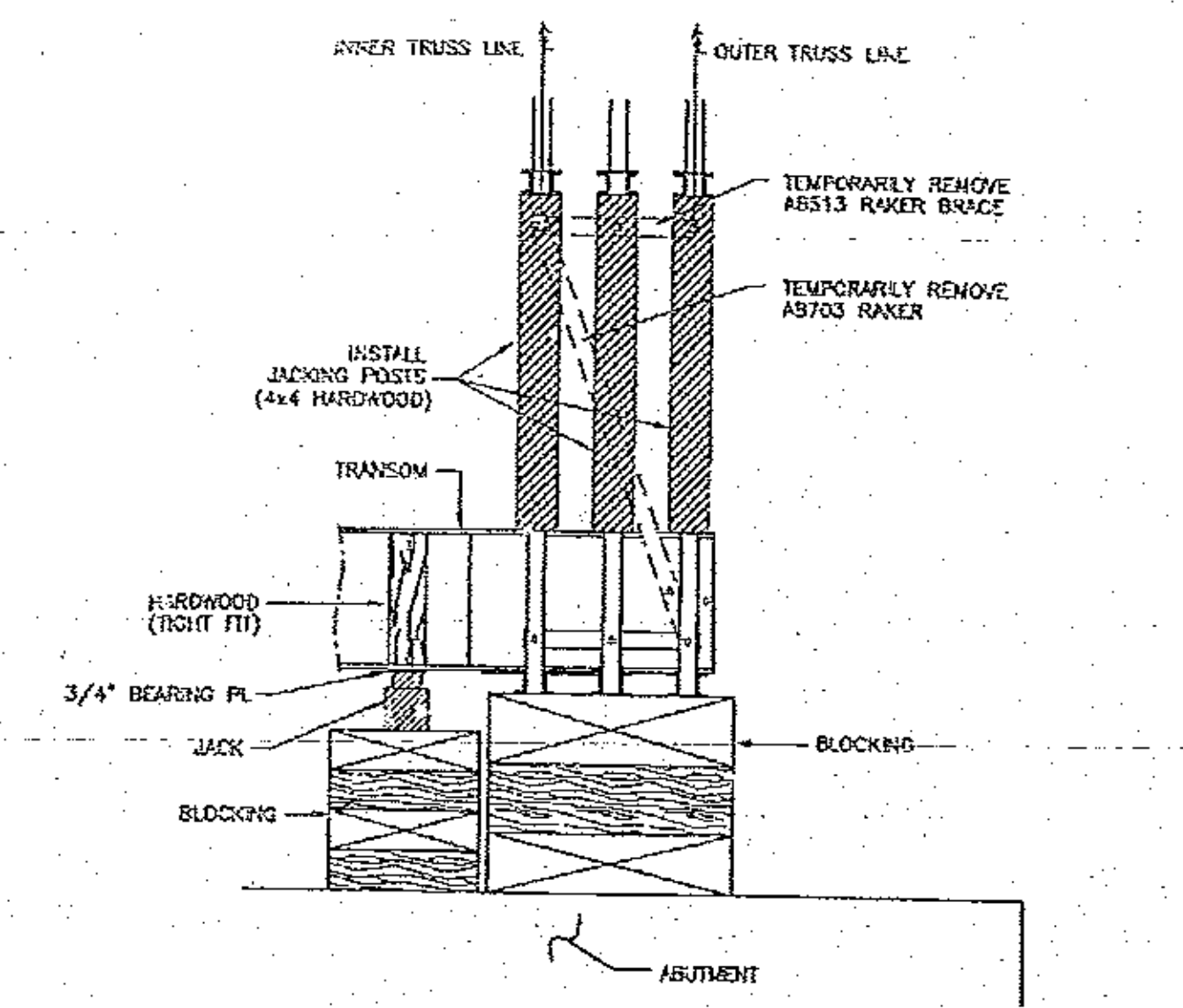
- PHASE 3**
- BUILD 40FT OF TS NOSE & 10FT OF DS TAIL



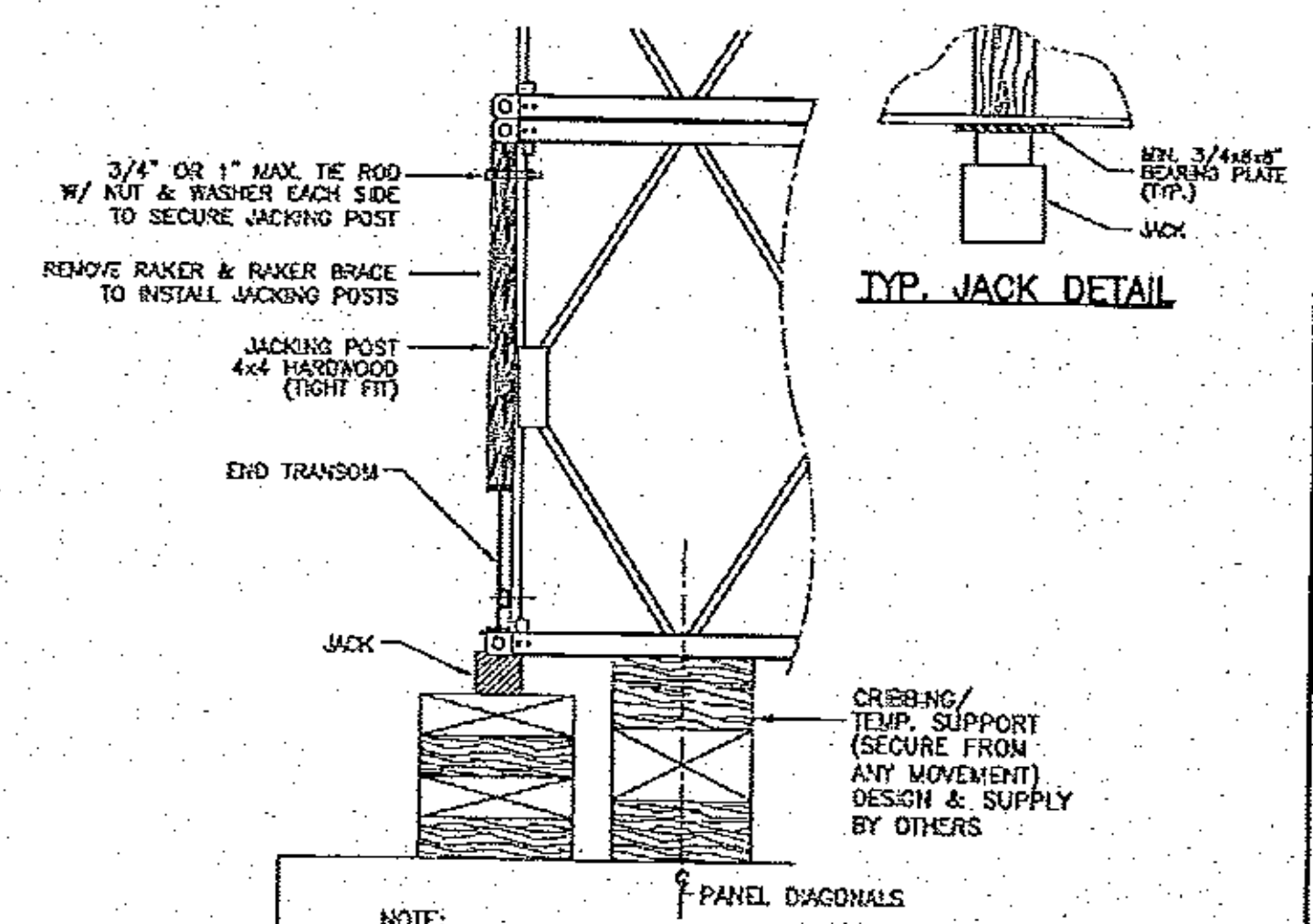
- PHASE 4**
- LOWER BRIDGE ONTO ROLLERS AT EACH ABUTMENT



- PHASE 5**
- INSTALL TEMPORARY BRACING IN BAY T1 & 20 AS SHOWN IN THE PULLBACK/ BLOCKING DETAIL
 - ADD 20 DECKS COUNTERWEIGHT TO THE TAIL BAY



TYPICAL JACKING DETAIL



TYPICAL BLOCKING DETAIL ELEVATION VIEW

INFORMATION DISCLOSED HEREIN IS THE PROPERTY OF ACROW CORPORATION OF AMERICA. THIS MATERIAL IS PRIVILEGED AND CONFIDENTIAL. IT IS INTENDED SOLELY FOR THE ADDRESSEE. ANY UNAUTHORIZED DISCLOSURE, REPRODUCTION, OR DISTRIBUTION IS PROHIBITED. DUPLICATION OF ANY PORTION OF THIS DATA SHALL INCLUDE THIS LEGEND. COPYRIGHT ACROW 03/2012

APPR.		<p>ACROW CREATING ENGINEERED SOLUTIONS WORLDWIDE®</p> <p>CORPORATION OF AMERICA 181 NEW ROAD, PARSIPPANY, NJ 07054</p> <p>ACROW 700XS PANEL BRIDGE DE-LAUNCHING SEQUENCE 200FT x 2 LANE 24FT TDR3H BRIDGE WOODFORD, VT ER BHF 010-1(44)</p>	
BY			
DESCRIPTION		<p>DRAWN BY: RJ</p> <p>CHECKED BY: MP</p> <p>APPROVED BY: SP</p> <p>DATE: NOVEMBER 21, 2012</p> <p>SCALE: AS SHOWN</p> <p>CONTRACT NO.</p>	
REV. DATE		<p>T. BUCK CONSTRUCTION AUBURN, ME</p>	<p>DRAWING NO. AB1543-DL</p> <p>REV. SHT 4A OF 4</p>