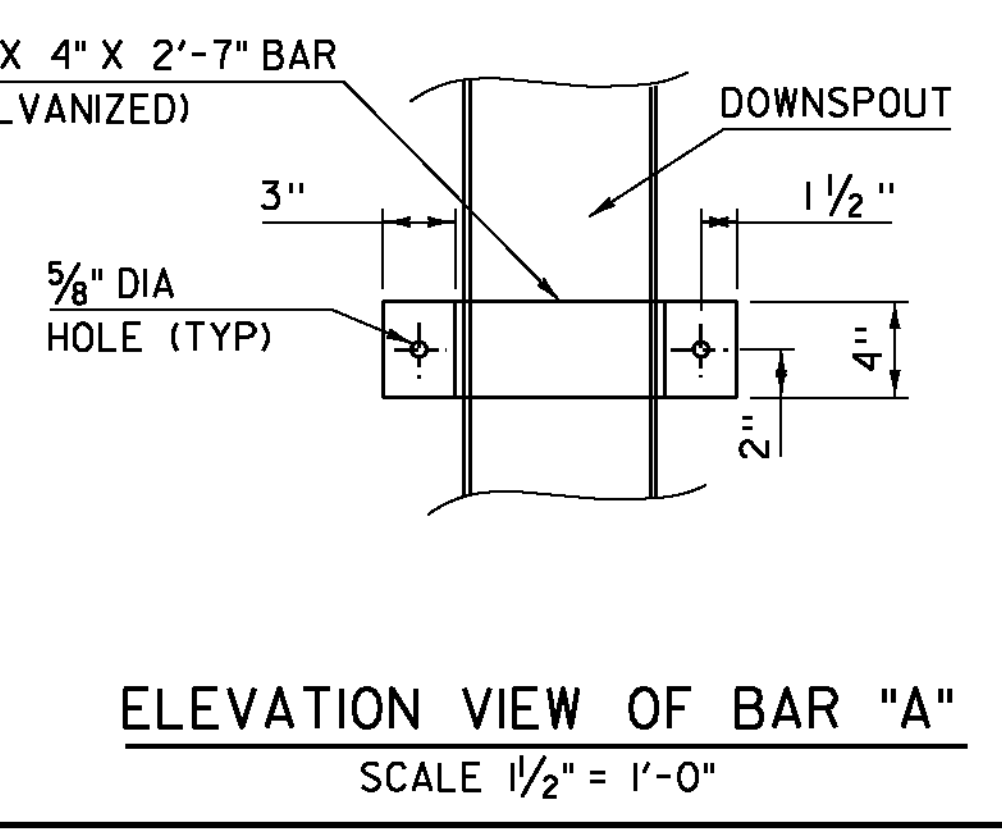
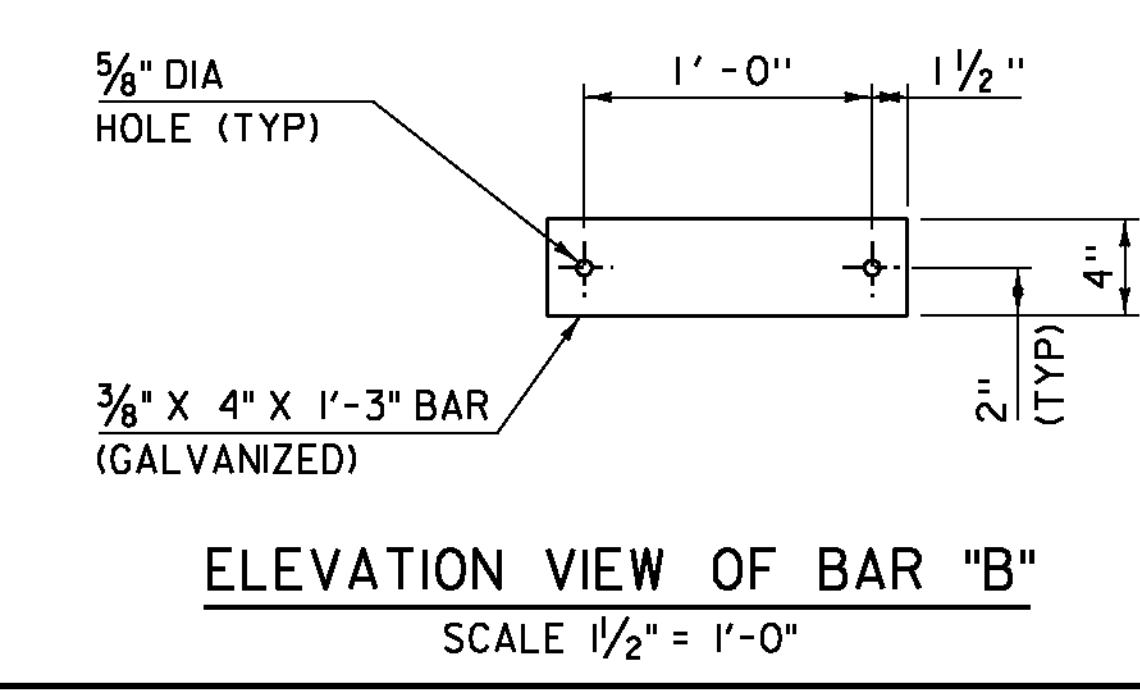
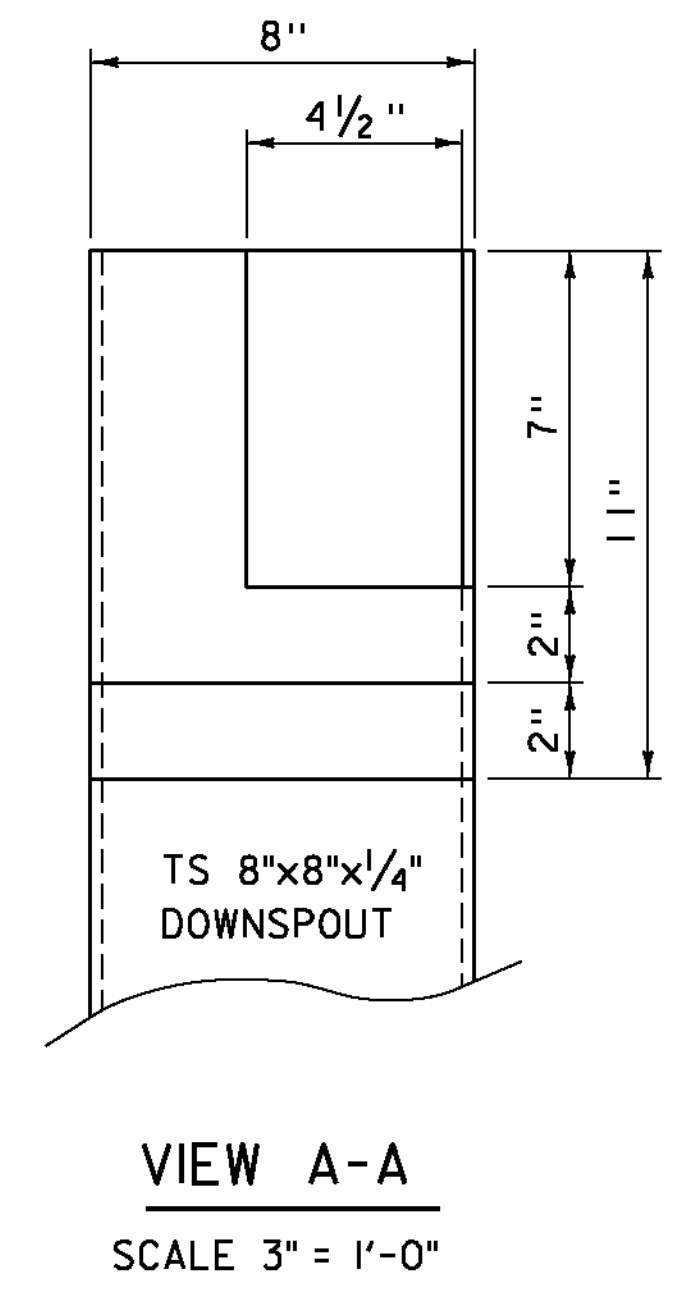
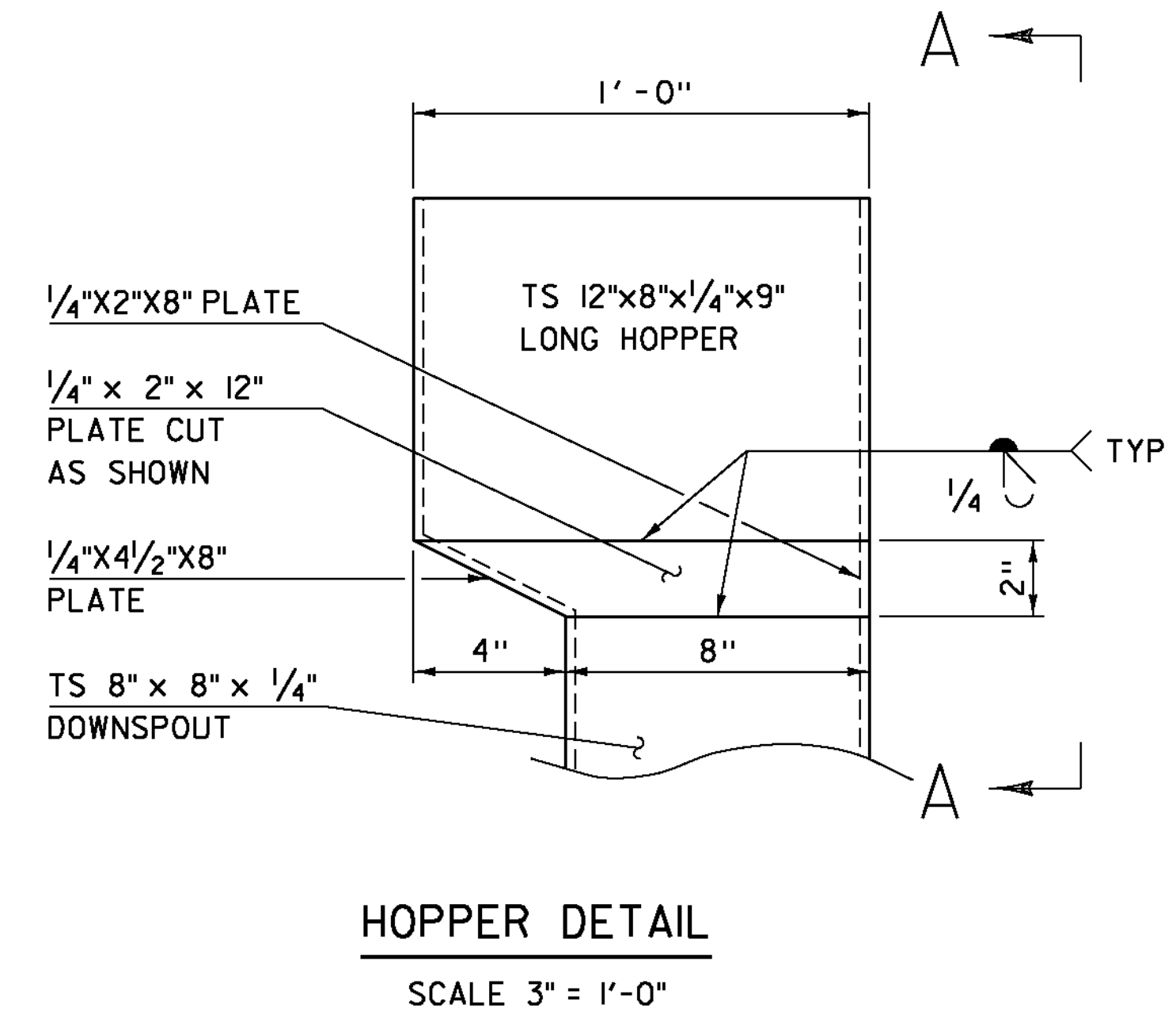
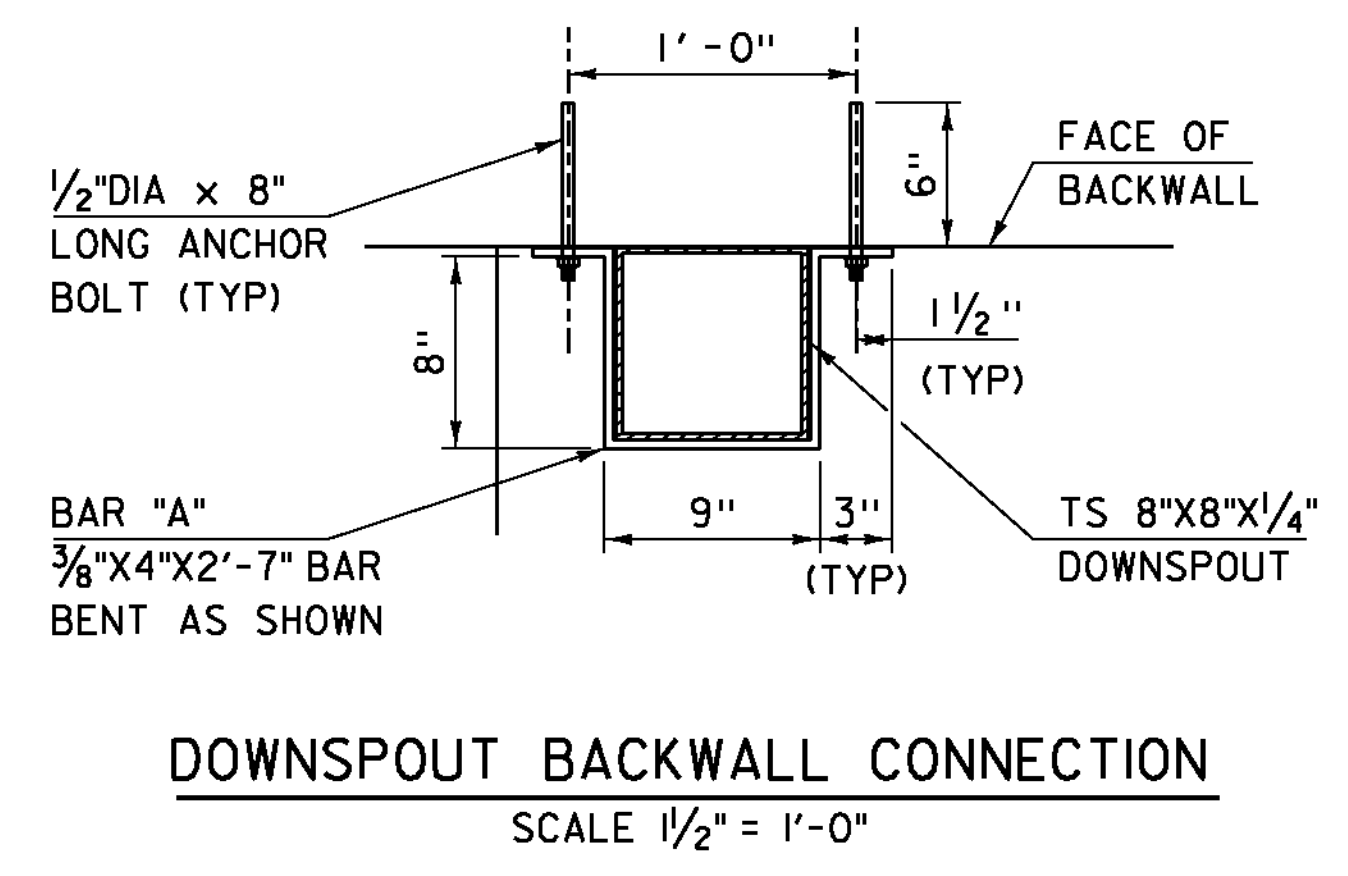
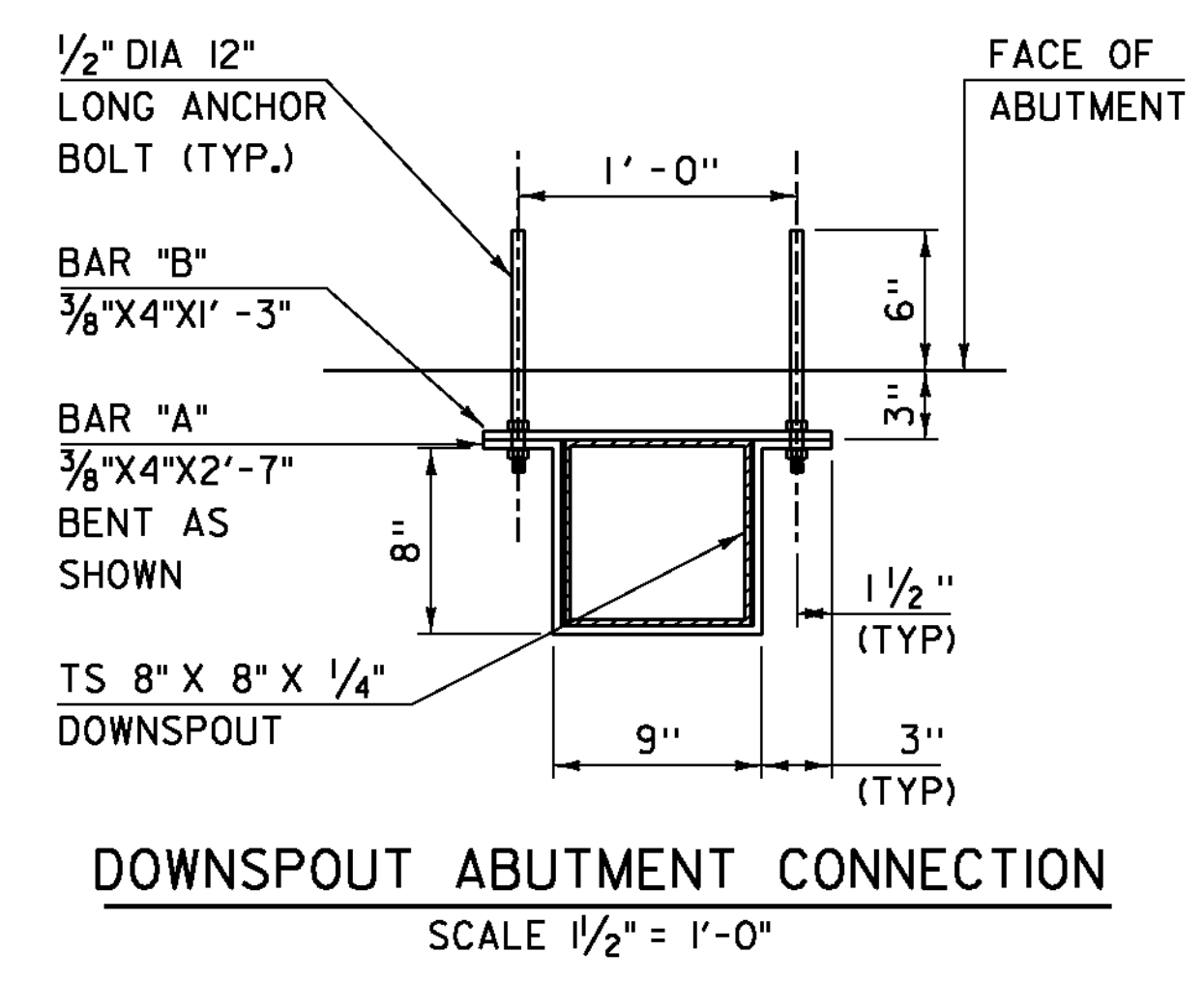


DOWNSPOUT NOTES

1. ALL HOLLOW STRUCTURAL STEEL TUBING SHALL CONFORM TO ASTM A-500 GR. B.
2. ALL PLATES, BARS, AND ANGLES SHALL CONFORM TO AASHTO M270M/M270 GR. 36.
3. DOWNSPOUT SHALL BE GALVANIZED IN ACCORDANCE WITH AASHTO M318 /M318 AFTER FABRICATION.
4. ALL BOLTS AND RELATED HARDWARE SHALL BE ASTM A-307 AND SHALL BE GALVANIZED IN ACCORDANCE WITH ASTM A-153 AASHTO M232).
5. ANY PLACE WHERE THE GALVANIZED HAS BEEN REMOVED FROM THE DOWNSPOUT EITHER BY CUTTING, BURNING, WELDING, PLACING, OR ANY OTHER MEANS, IT SHALL BE REPAIRED IN ACCORDANCE WITH SUBSECTION 726.08.
6. THE DOWNSPOUT AND RELATED HARDWARE FOR EACH SHALL BE PAID FOR UNDER THE ITEM 506.55 "STRUCTURAL STEEL, PLATE GIRDER".
7. ALL REQUIRED WELDS FOR DOWNSPOUT SHALL BE DETAILED ON FABRICATION DRAWINGS WHICH SHALL ALSO INCLUDE ALL APPLICABLE WELDING PROCEDURES.
8. AFTER ALL PAVING AND CONCRETE OPERATIONS THE DOWNSPOUT SHALL BE CLEANED OF ALL CONTAMINATION BY FLUSHING.
9. DETAILS SHOWN ARE TYPICAL BOTH SIDES OF BRIDGE AT ABUTMENT #1.



PROJECT NAME: WOODFORD	
PROJECT NUMBER: ER BHF 010-1(44)	
FILE NAME: slb214sup.dgn	PLOT DATE: 23-MAR-2012
PROJECT LEADER: C. CARLSON	DRAWN BY: C. MOONEY
DESIGNED BY: M. EVANS-MONGEON	CHECKED BY: M. EVANS-MONGEON
DOWNSPOUT DETAILS	SHEET 29 OF 58