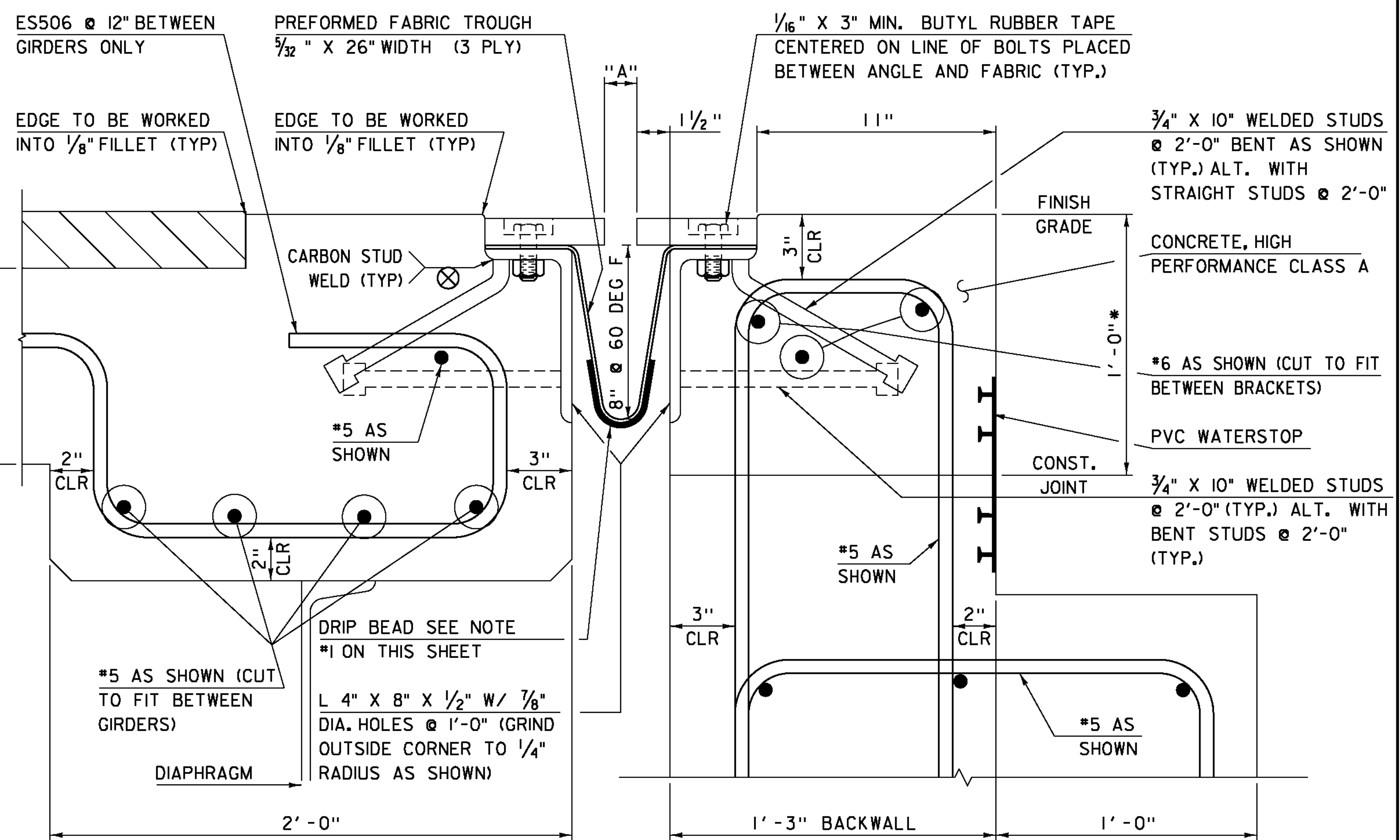


JOINT SECTION AT GIRDERS

SCALE 3" = 1'-0"

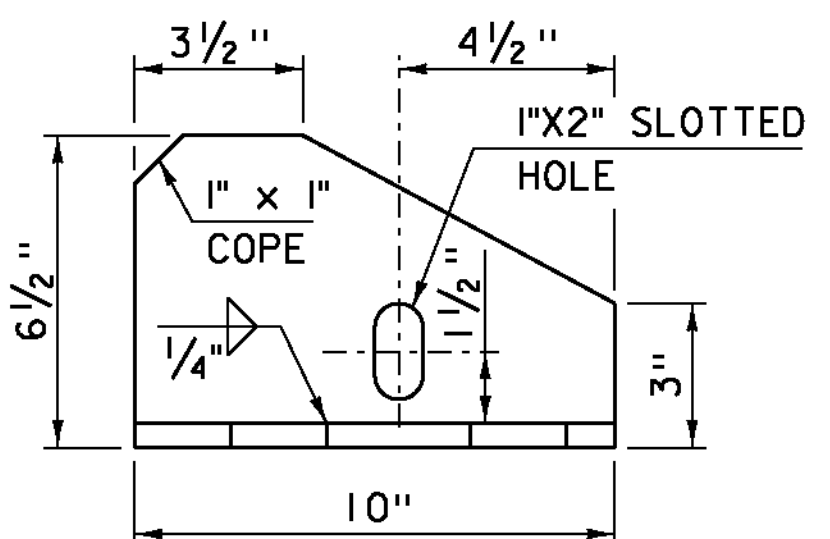


JOINT SECTION BETWEEN GIRDERS

SCALE 3" = 1'-0"

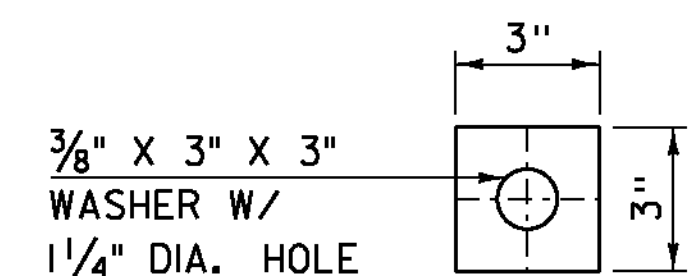
NOTES FOR ITEM 516.11 "BRIDGE EXPANSION JOINT, VERMONT"

- FABRIC TROUGH SHALL BE THOROUGHLY CLEANED AND FLUSHED AFTER PAVING OPERATION. A DRIP BEAD OF 1/4"x7" STRIP OF PREFORMED FABRIC MATERIAL SHALL BE CEMENTED TO THE BOTTOM OF THE FABRIC TROUGH USING AN ADHESIVE APPROVED BY THE MANUFACTURER. THE DRIP BEAD SHALL BE APPLIED 1" FROM THE DOWNSPOUT END OF THE TROUGH. PREFORMED FABRIC MATERIAL SHALL BE CONTINUOUS FOR THE FULL LENGTH OF THE JOINT.
- THE EXPANSION DEVICE SHALL BE COVERED TO PROTECT THE FINISH DURING PLACING OF BRIDGE DECK CONCRETE.
- SEE "JOINT GAP DIMENSION TABLE" FOR DISTANCE "A" VALUES IN TEMPERATURE RANGE PROVIDED.
- JOINT BRACKET LENGTH VARIES DEPENDENT ON THE BRIDGE SKEW ANGLE. THE BRACKET MUST BE LOCATED SUCH THAT THE THREADED RODS ARE NOT LESS THAN 1/2" FROM GIRDERS END OR FLANGE SIDES.
- ALL STEEL COMPONENTS SHALL BE GALVANIZED OR METALIZED AND MEET THE REQUIREMENTS OF SUBSECTION 726.08 OR 726.09. PRIOR TO GALVANIZING OR METALIZING, ALL CORNERS AND EDGES OF STEEL PLATES, SHAPES, ETC., SHALL BE GROUND TO A 1/16" INCH RADIUS. THREADED RODS SHALL CONFORM TO THE REQUIREMENTS OF 714.04. THE "WELDED STUD ANCHOR PLATE" AND WELDED STUDS MAY BE SUPPLIED WITHOUT GALVANIZING OR METALIZING.
- THE 4"x8"x 1/2" ANGLES MAY BE FURNISHED AS ONE CONTINUOUS PIECE OR SPLICED AS SHOWN IN THE FIELD SPLICE DETAIL. THE 1/4"x5/2" BARS EACH SIDE OF THE JOINT SHALL BE PROVIDED IN TWO EQUAL LENGTHS.
- PROJECTING THREADS OF THE 3/4" DIA. BOLTS IN THE JOINT SHALL BE GREASED BY THE CONTRACTOR PRIOR TO PLACING ADJACENT CONCRETE. THIS WILL FACILITATE BOLT REMOVAL IF REQUIRED IN THE FUTURE.
- FILL COUNTERBORED HOLES WITH HOT POURED JOINT SEALER IN ACCORDANCE WITH SUBSECTION 707.04 AFTER BOLT INSTALLATION. PAYMENT FOR THE WORK SHALL BE INCIDENTAL TO ITEM 516.11 "BRIDGE EXPANSION JOINT, VERMONT".
- THE FABRIC TROUGH SHALL BE ONE CONTINUOUS FABRIC PIECE. THE EXPANSION JOINT MAY BE SHOP ASSEMBLED AND SHIPPED AS ONE CONTINUOUS PIECE, OR IT MAY HAVE ONE FIELD SPLICE AS DETAILED ON THIS SHEET. IF THE EXPANSION JOINT HAS A FIELD SPLICE, THE FABRIC TROUGH SHALL BE SHIPPED WITH ONE UNIT AND ASSEMBLED WITH THE SECOND UNIT PRIOR TO CONCRETE PLACEMENT.
- TEMPORARY SHIPPING ATTACHMENTS SHALL BE ATTACHED BY BOLTING; WELDING WILL NOT BE PERMITTED.



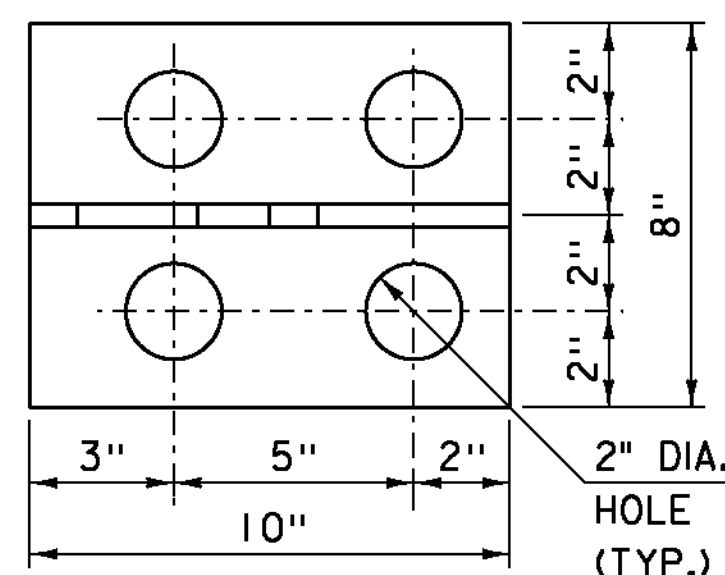
BRACKET ELEVATION

SCALE 3" = 1'-0"



WASHER FOR BRACKET

SCALE 3" = 1'-0"



BRACKET PLAN

SCALE 3" = 1'-0"

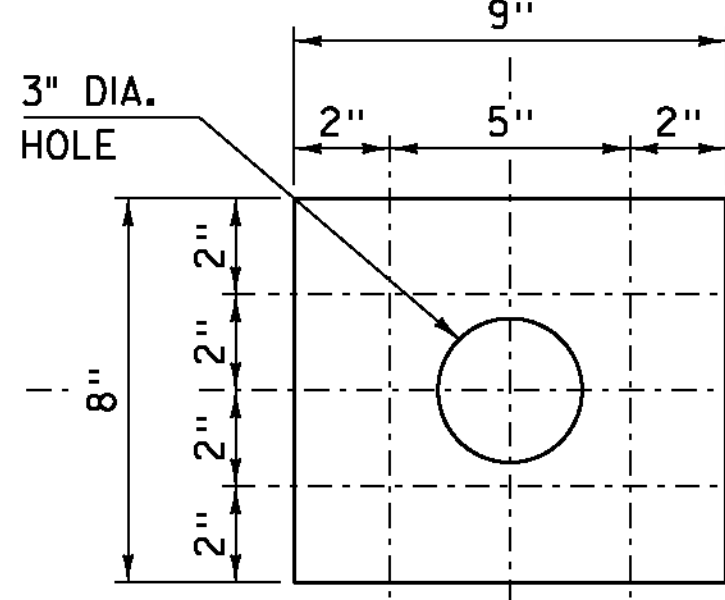
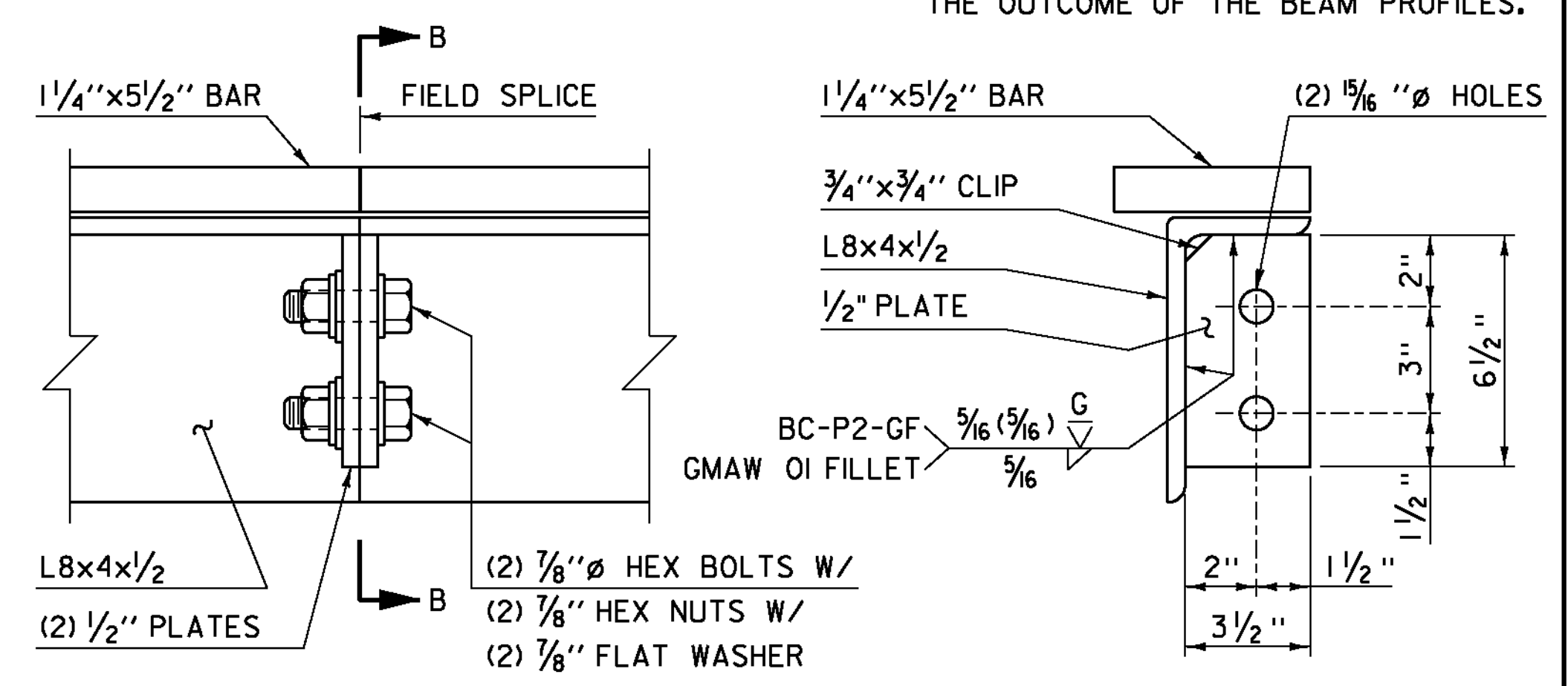


PLATE PLAN

SCALE 3" = 1'-0"

NOTE:

ALL PLATES 1/2"



OPTIONAL FIELD SPLICE DETAIL

SECTION "B-B"

JOINT GAP DIMENSION TABLE

TEMP	"A" DIST
0 DEG F	2 3/8"
15 DEG F	2 1/4"
30 DEG F	2 1/8"
45 DEG F	2"
60 DEG F	1 7/8"
75 DEG F	1 3/4"
90 DEG F	1 5/8"
105 DEG F	1 1/2"

PROJECT NAME: WOODFORD
 PROJECT NUMBER: ER BHF 010-1(44)

FILE NAME: s1lb214sup.dgn
 PROJECT LEADER: C. CARLSON
 DESIGNED BY: M. EVANS-MONGEON
 BRIDGE EXPANSION JOINT DETAILS

PLOT DATE: 23-MAR-2012
 DRAWN BY: C. MOONEY
 CHECKED BY: M. EVANS-MONGEON
 SHEET 27 OF 58

• THESE DIMENSIONS ARE THEORETICAL AND MAY CHANGE DEPENDING UPON THE OUTCOME OF THE BEAM PROFILES.