

GPS CONTROL POINTS

HVCTRL #1

B95011
 NORTH = 141197.186
 EAST = 1467159.125
 ELEV. = 1020.450

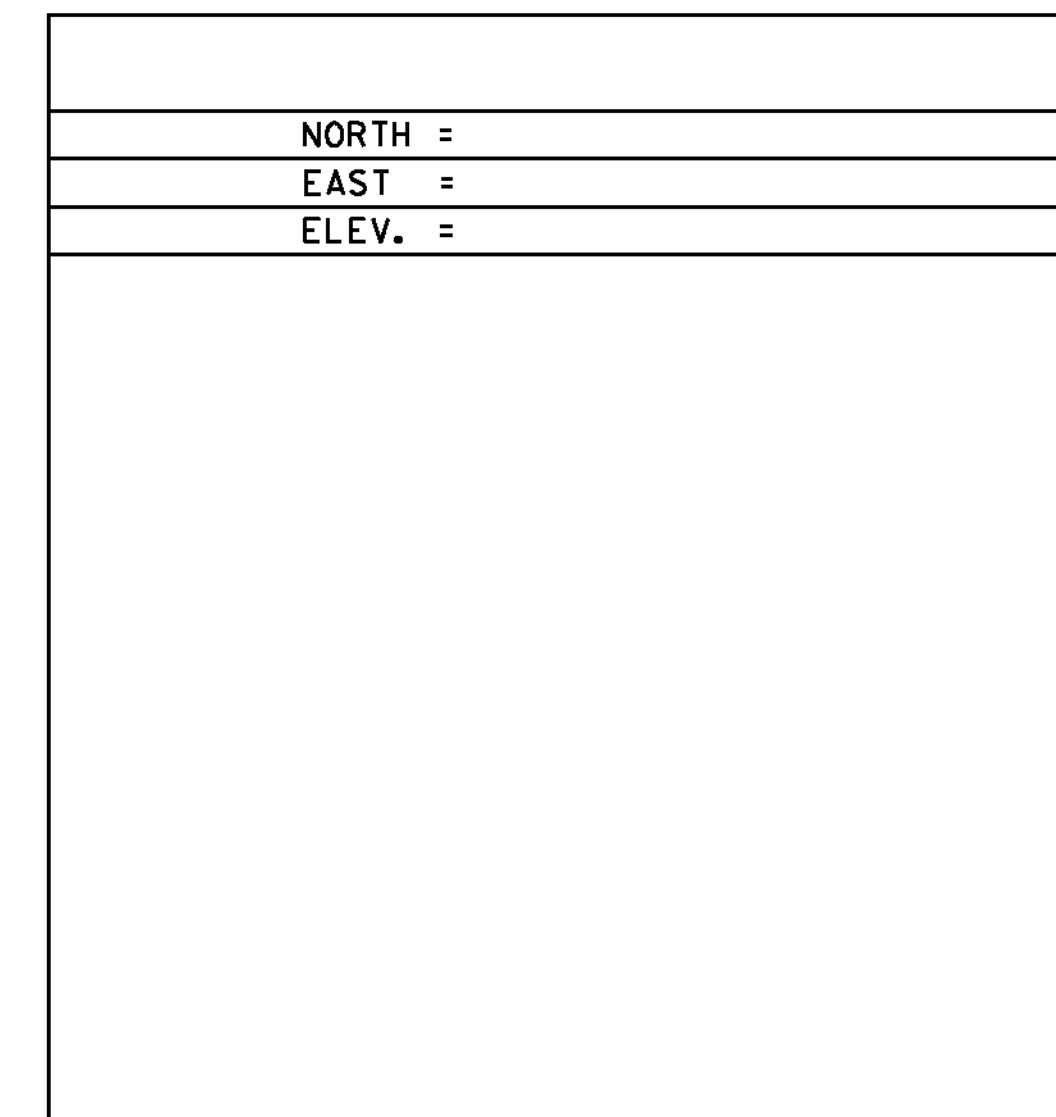
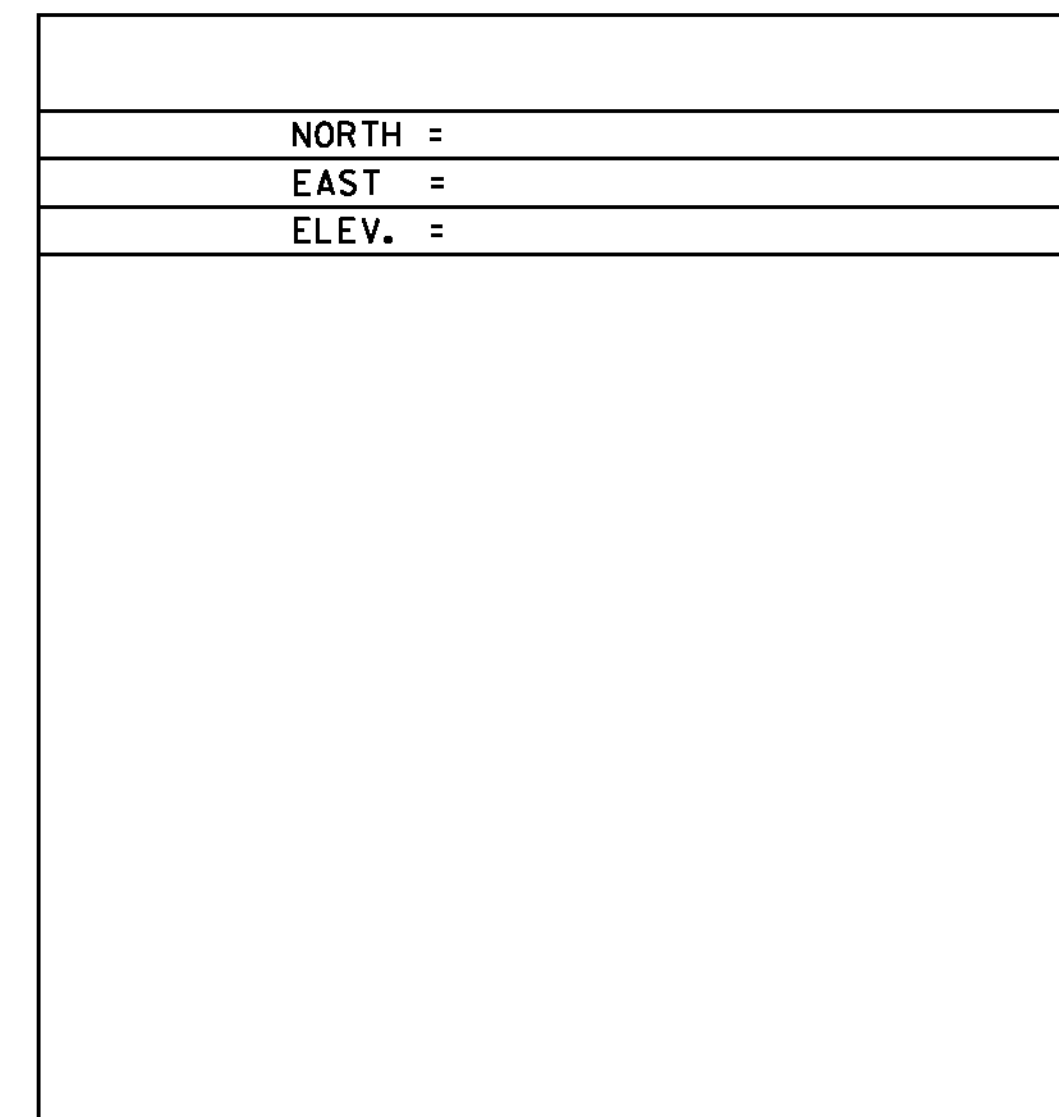
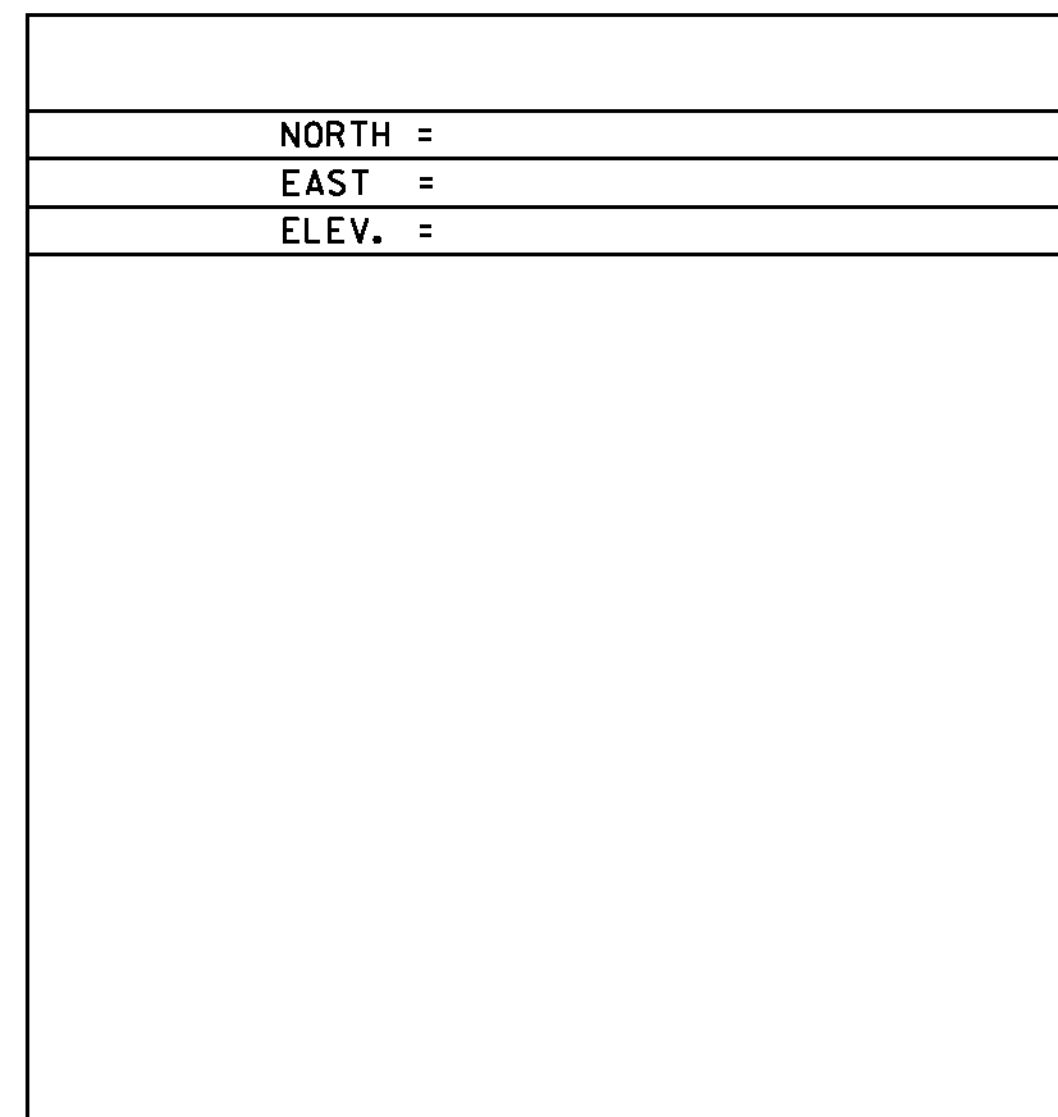
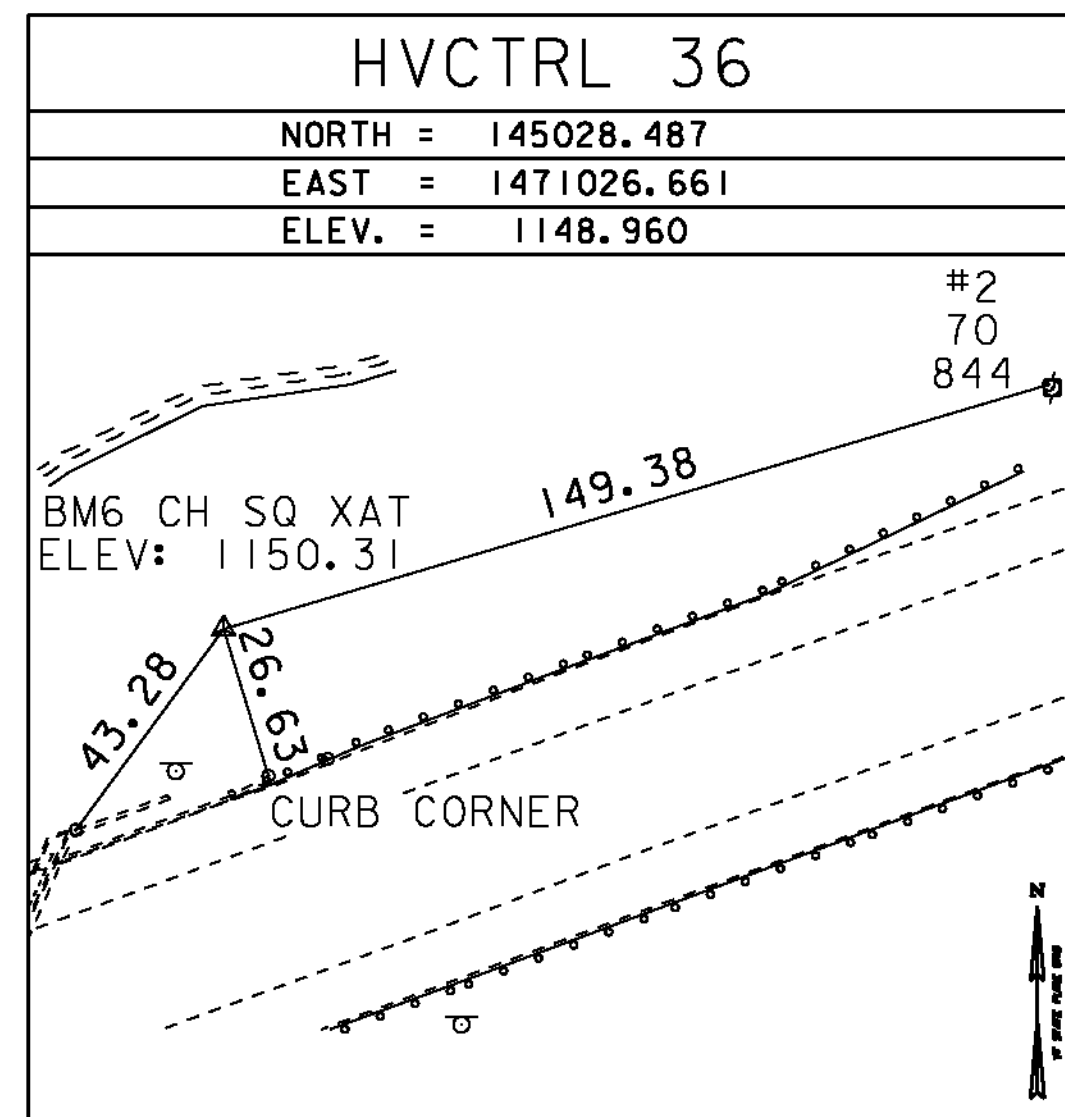
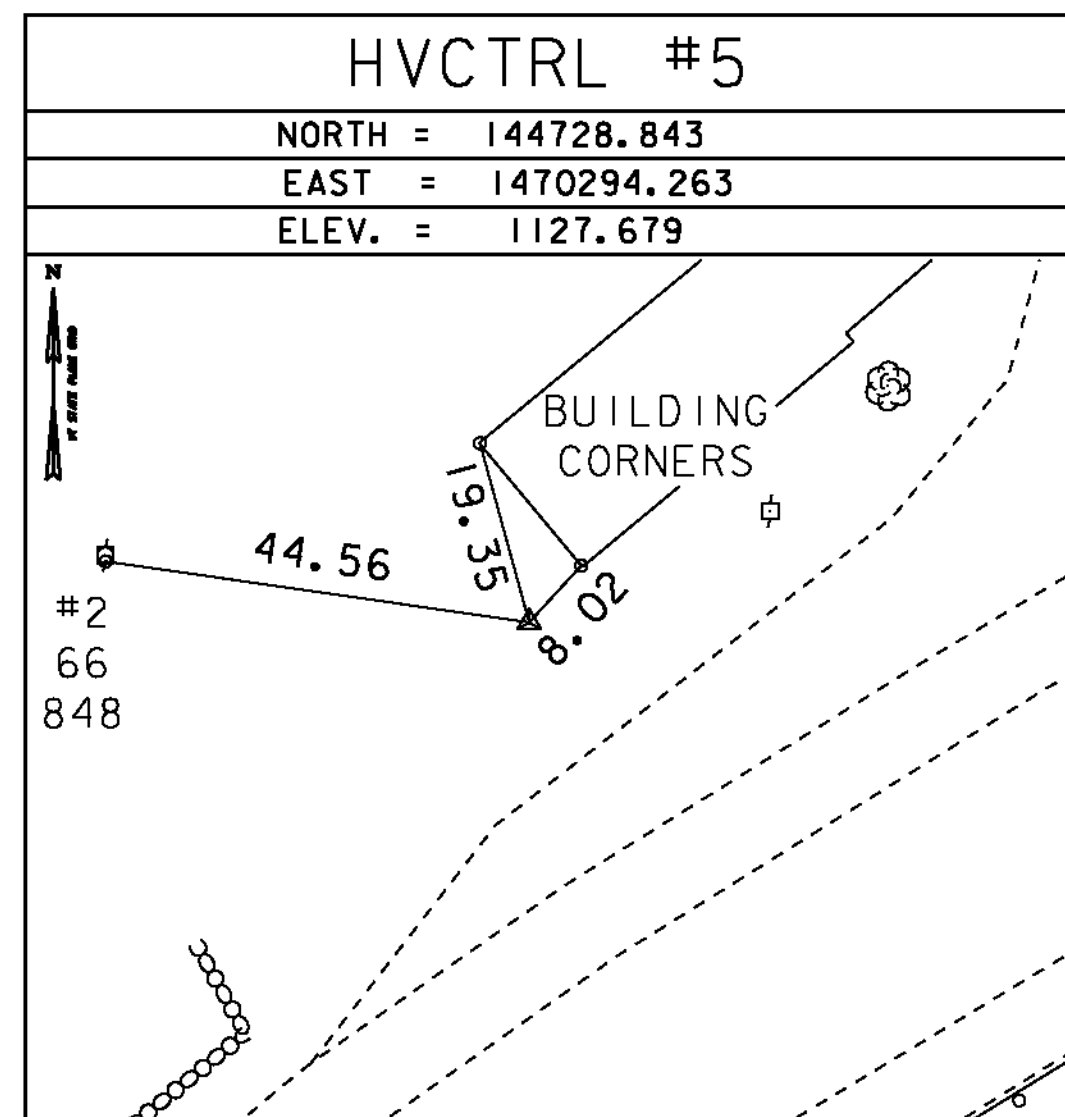
GENERAL LOCATION, WOODFORD, VT., ABOUT 2.5 MI (4.0 KM) EAST OF BENNINGTON, VT. TO REACH FROM THE INTERSECTION OF U.S. ROUTE 7 AND VT ROUTE 9 IN BENNINGTON GO EAST ALONG VT ROUTE 9 FOR 2.7 MI (4.3 KM) TO THE MOST NORTHEASTERLY GRAVEL DRIVE LEFT TO THE AVALON MOTEL AND MINI MART AND THE MARK ON THE LEFT. THE MARK IS SET 10 CM BELOW GROUND SURFACE IN THE TOP OF A 30 CM DIAMETER CONCRETE MONUMENT POURED TO A DEPTH OF 1.4 M (4.6 FT). IT IS 9.3 M (30.5 FT) NORTHWEST OF AND ABOUT 0.3 M (1.0 FT) LOWER THAN THE CENTERLINE OF VT ROUTE 9, 4.9 M (16.1 FT) SOUTHWEST OF THE CENTERLINE OF THE GRAVEL DRIVE TO THE MOTEL, 7.3 M (24.0 FT) EAST OF THE SOUTHWEST END OF A METAL CULVERT, 18.4 M (60.4 FT) SOUTH OF A 20 CM PINE, AND 1.1 M (3.6 FT) SOUTHEAST OF A FIBERGLASS WITNESS POST. NOTE, THIS MARK IS INTERVISIBLE WITH B95012.

HVCTRL #2

B95012
 NORTH = 142071.296
 EAST = 1468110.302
 ELEV. = 1047.270

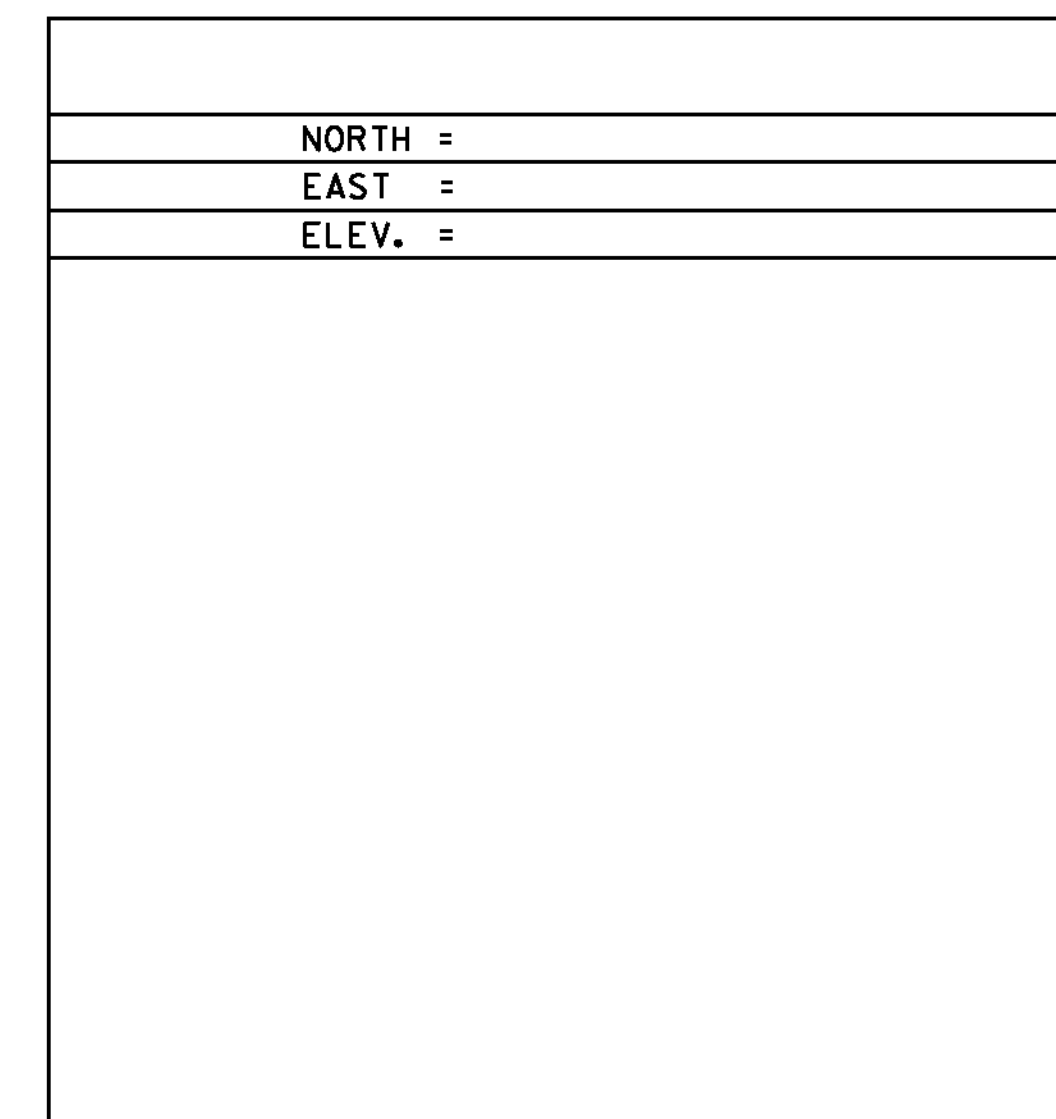
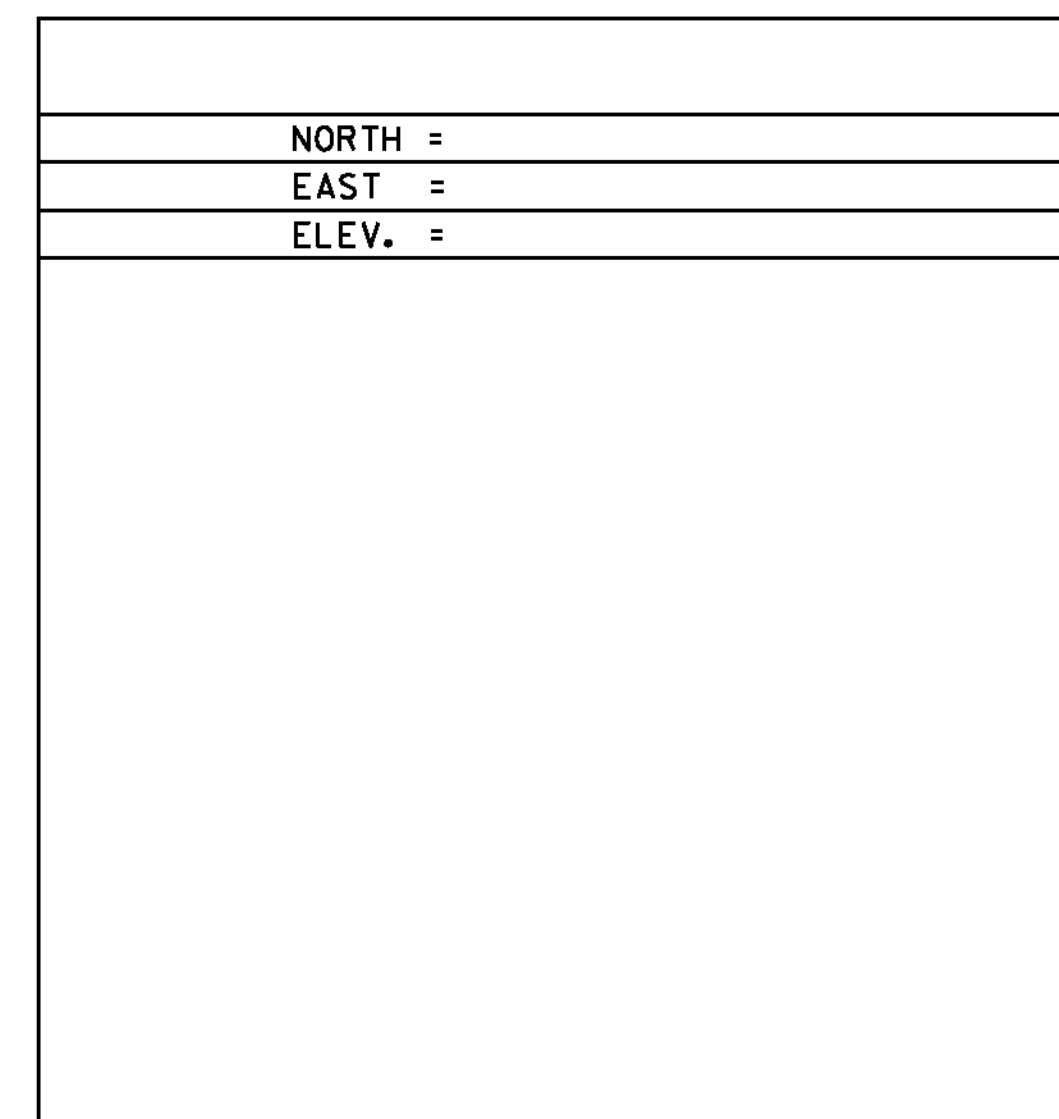
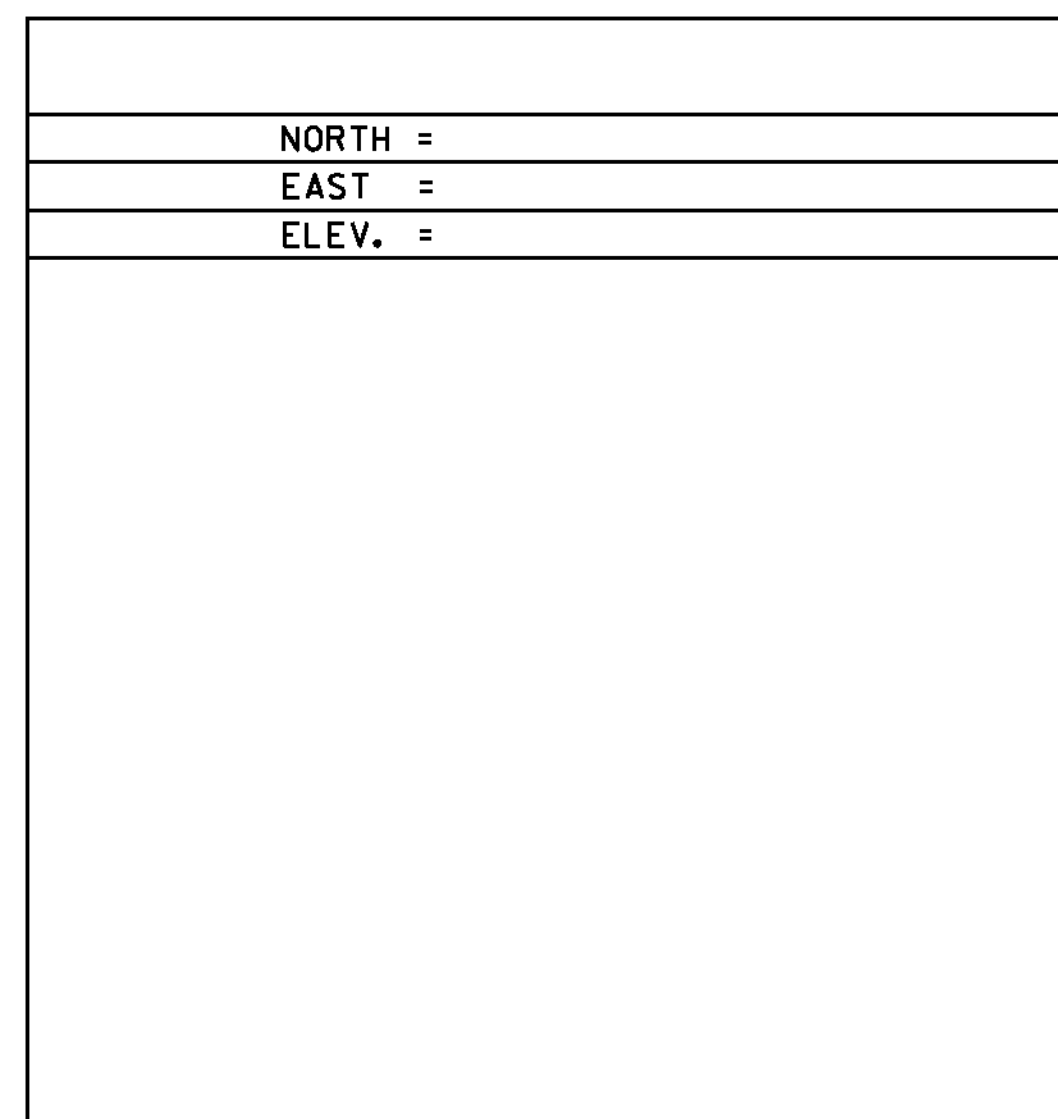
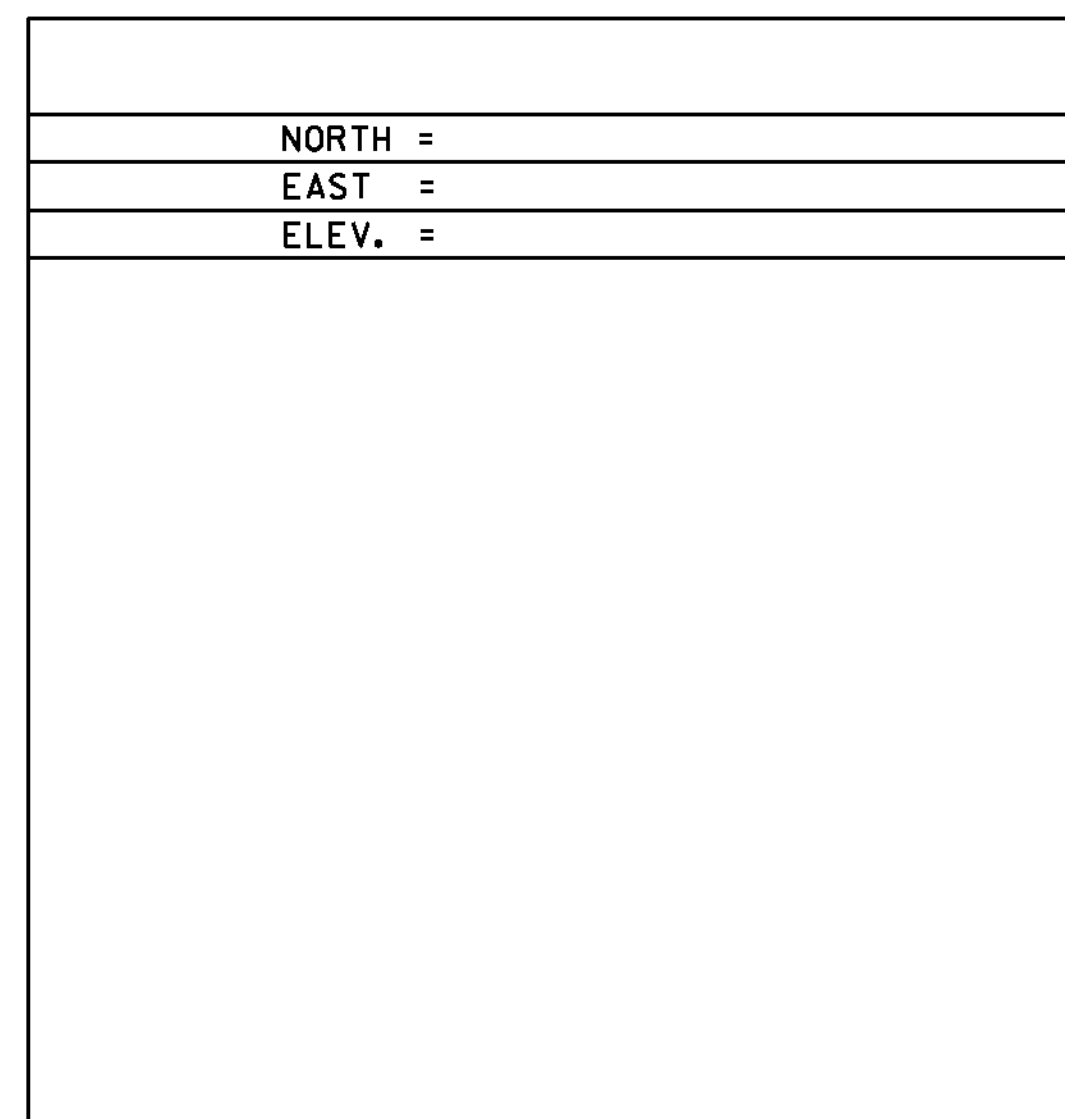
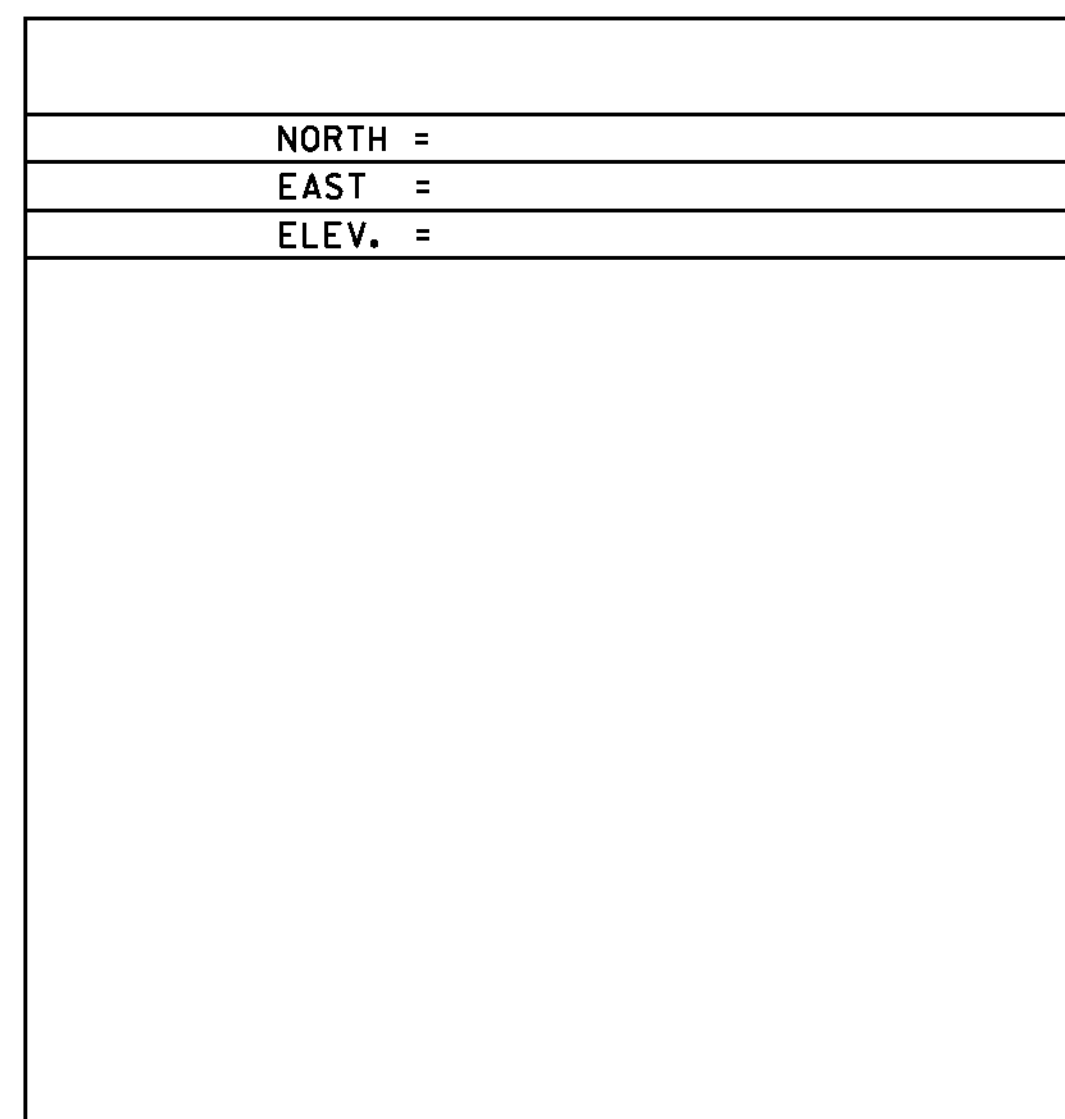
GENERAL LOCATION, WOODFORD, VT., ABOUT 3 MI (4.8 KM) EAST OF BENNINGTON, VT. TO REACH FROM THE INTERSECTION OF U.S. ROUTE 7 AND VT ROUTE 9 IN BENNINGTON GO EAST ALONG VT ROUTE 9 FOR 3.0 MI (4.8 KM) TO A POWERLINE CROSSING AND THE MARK ON THE RIGHT. THE MARK IS SET FLUSH WITH GROUND SURFACE IN THE TOP OF A 30 CM DIAMETER CONCRETE MONUMENT POURED TO A DEPTH OF 1.4 M (4.6 FT). IT IS 10.6 M (34.8 FT) SOUTH OF AND ABOUT 0.5 M (1.6 FT) LOWER THAN THE CENTERLINE OF VT ROUTE 9, 8.4 M (27.6 FT) NORTHEAST OF POWER POLE NO. 18, 25.3 M (83.0 FT) SOUTH OF POLE NO. 52/864, 23.7 M (77.8 FT) WEST OF THE SOUTHWEST END OF A 70-CM DIAMETER METAL CULVERT, AND 0.7 M (2.3 FT) NORTH OF A FIBERGLASS WITNESS POST. NOTE, THIS MARK IS INTERVISIBLE WITH B95011.

TRAVERSE TIES



* MAIN TRAVERSE COMPLETED 11/06/2011 BY L. ORVIS P.C. & G. HITCHCOCK

ALIGNMENT TIES



DATUM	
VERTICAL	NAVD 88
HORIZONTAL	NAD 83 (07)
ADJUSTMENT	COMPASS

PROJECT NAME:	WOODFORD
PROJECT NUMBER:	ER-BHF 010-1(44)
FILE NAME:	survey\11b2141.dgn
PROJECT LEADER:	C. CARLSON
DESIGNED BY:	
TIE SHEET	
PLOT DATE:	23-MAR-2012
DRAWN BY:	R. BULLOCK
CHECKED BY:	
SHEET	9 OF 58