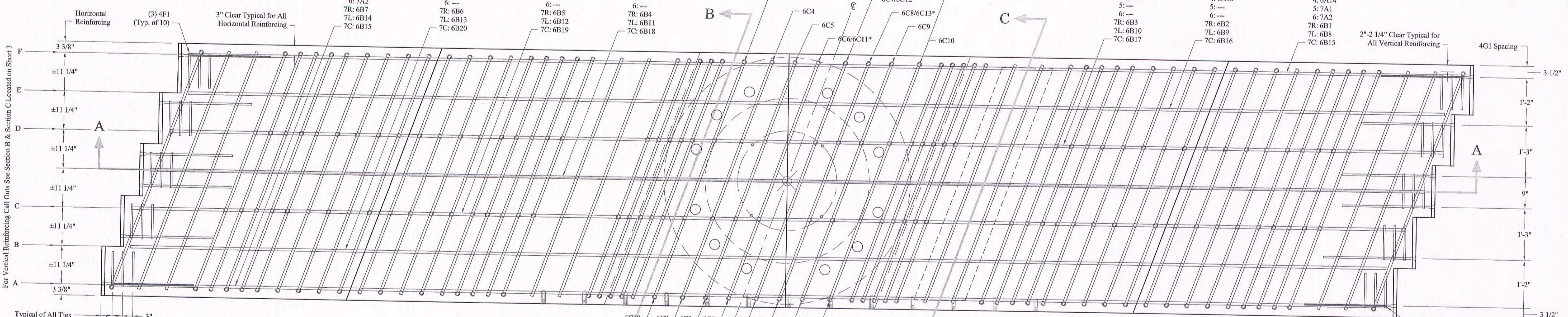


Notes: 31" Minimum Lap Length Typical

- 1: 6A7
 - 2: 6A12
 - 3: 6A13
 - 4: 6A20
 - 5: 7A1
 - 6: 7A2
 - 7R: 6B7
 - 7L: 6B14
 - 7C: 6B15
- 1: 6A6
 - 2: 6A12
 - 3: 6A13
 - 4: 6A19
 - 5: ---
 - 6: ---
 - 7R: 6B6
 - 7L: 6B13
 - 7C: 6B20
- 1: 6A5
 - 2: 6A11
 - 3: 6A13
 - 4: 6A18
 - 5: ---
 - 6: ---
 - 7R: 6B5
 - 7L: 6B12
 - 7C: 6B19
- 1: 6A4
 - 2: 6A10
 - 3: 6A13
 - 4: 6A17
 - 5: ---
 - 6: ---
 - 7R: 6B4
 - 7L: 6B11
 - 7C: 6B18
- 1: 6A3
 - 2: 6A9
 - 3: 6A13
 - 4: 6A16
 - 5: ---
 - 6: ---
 - 7R: 6B3
 - 7L: 6B10
 - 7C: 6B17
- 1: 6A2
 - 2: 6A9
 - 3: 6A13
 - 4: 6A15
 - 5: ---
 - 6: ---
 - 7R: 6B2
 - 7L: 6B9
 - 7C: 6B16
- 1: 6A1
 - 2: 6A8
 - 3: 6A13
 - 4: 6A14
 - 5: 7A1
 - 6: 7A2
 - 7R: 6B1
 - 7L: 6B8
 - 7C: 6B15

Rotation of Reinforcing is Allowable in Order to Avoid Pipe Interference

* See Additional Reinforcing Detail Located on Sheet 3



Plan View

Shaded Regions Indicate Possible Interference, Adjust Dowel Bar Sub & Horizontal Reinforcing as Needed (Typical of 4 Locations)

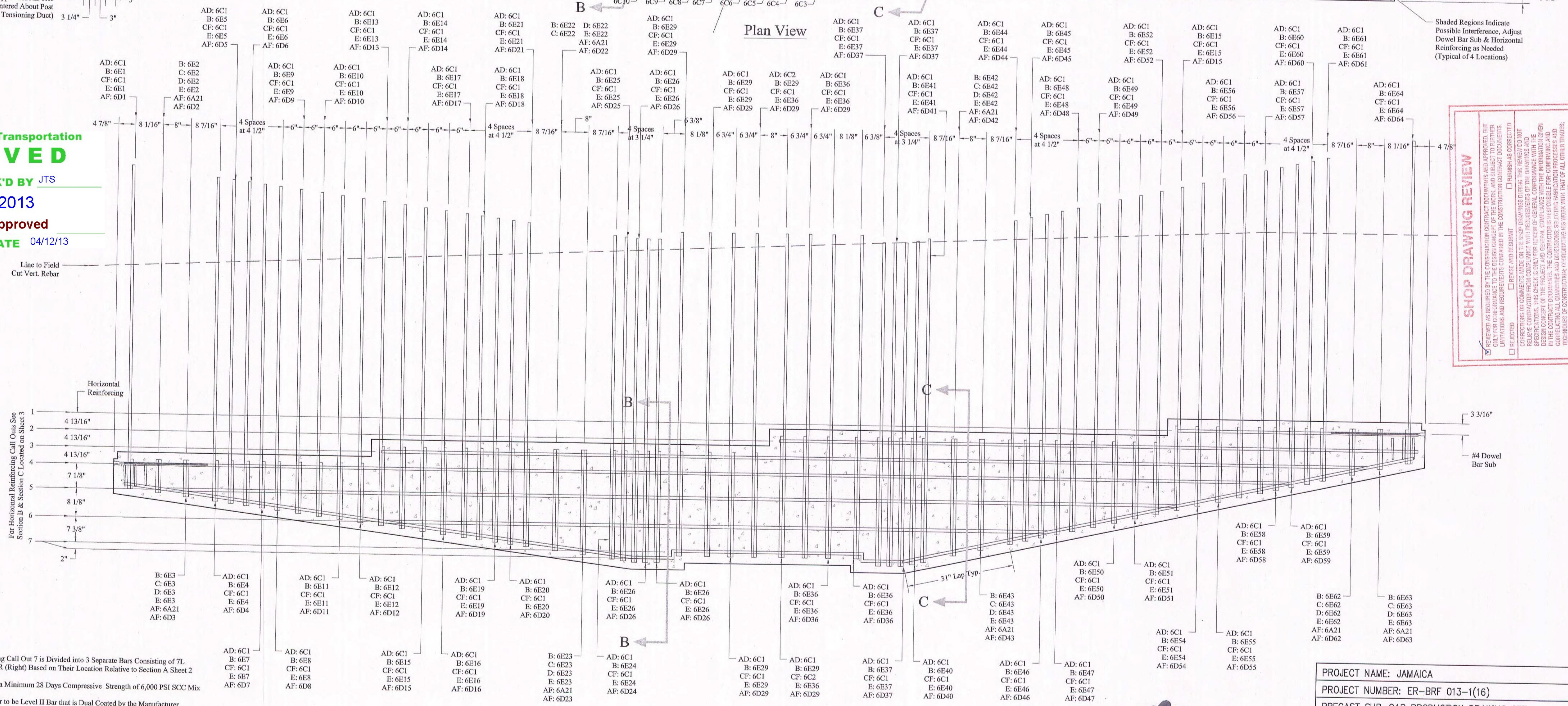
Vermont Agency of Transportation
RECEIVED
 CK'D BY VHB OK'D BY JTS
 April 11, 2013
 RESUBMIT NO Approved
 BY KMH DATE 04/12/13

SHOP DRAWING REVIEW

REVIEWED BY: [Signature]

DATE: 4-12-13

Job Number: 57350.00
 Reviewed By: G.S. Goodrich
 Date: 4-12-13



Section A

- Notes:
- Horizontal Reinforcing Call Out 7 is Divided into 3 Separate Bars Consisting of 7L (Left), 7C (Center) & 7R (Right) Based on Their Location Relative to Section A Sheet 2
 - Concrete Shall Have a Minimum 28 Days Compressive Strength of 6,000 PSI SCC Mix
 - All Reinforcing Rebar to be Level II Bar that is Dual Coated by the Manufacturer
 - Precast Sub Cap Shall be Poured in the Upright Position and Handled in the Upright Position Only Using Methods Shown on Lifting Handling Detail Located on Sheet 4



PROJECT NAME: JAMAICA	
PROJECT NUMBER: ER-BRF 013-1(16)	
PRECAST SUB-CAP PRODUCTION DRAWING SET	
DRAWING: REBAR REINFORCING PLAN & SECTION	
DRAWN BY: CD	DATE: 04/11/13
APPROVED BY: TD	SHEET: 2 OF 4