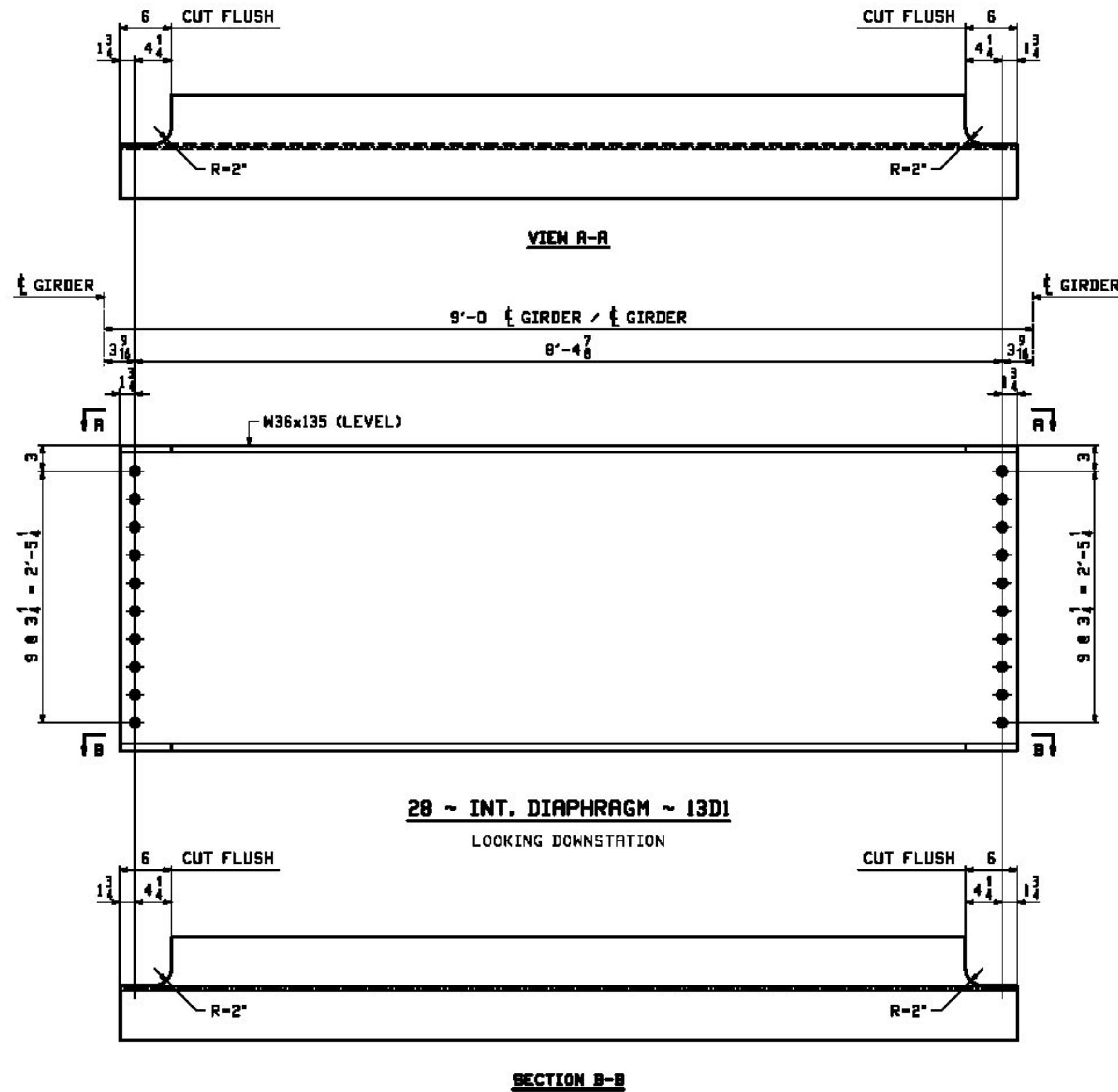


JOB NO.		DRAWING NO.		REV.
529-1		13		
REV.	DATE	BY	CHK	APV
1				
2				

LINE	MARK	QTY	MARK	MATERIAL	LENGTH FT	THICKNESS INCHES	REMARKS	WT	PROCUREMENT NOTES
1	13D1	28		INT. DIAPHRAGM					1174
2	U	28		W 36x135	8	8 3/8			1174



Vermont Agency of Transportation
RECEIVED
 CK'D BY GML/JWC OK'D BY GG
 March 6, 2013
 RESUBMIT Approved
 BY KMH DATE 03/18/13

- NOTES:
 1. FOR GENERAL NOTES SEE DRAWING GNI.
 2. T2 - DENOTES CHARPY V-NOTCH TESTING REQUIRED.

REV.	DATE	REMARKS	DWN	CHK	APVL	SHOP
MATERIAL:		SURFACE PREP. & PAINT:		HOLES:		SHOP BOLTS:
M270-50M		SEE GNI		3/16"		NONE
DESCRIPTION: INT. DIAPHRAGMS						
CASCO BAY STEEL STRUCTURES, INC. 1 WALLACE AVE. PHONE (207) 780-6722 SOUTH PORTLAND, ME 04106 FAX. (207) 780-6726						
STRUCTURE: VT 100 OVER WARDSBORO BROOK			DRAWN:	DATE:		
BRIDGE NO 78			EEO	02/04		
WINDHAM COUNTY			CHKD:	DATE:		
			DBH	02/27		
LOCATION: TOWN OF JAMAICA, VT				JOB NO.	DWG NO.	
PROJ NO. ER-BRF 013-1(16)				529-1	13	
CUSTOMER: T. BUCK CONSTRUCTION				REV.	▲	

03/18/13 10:53 AM
 C:\Users\jgibson\OneDrive\Documents\117403