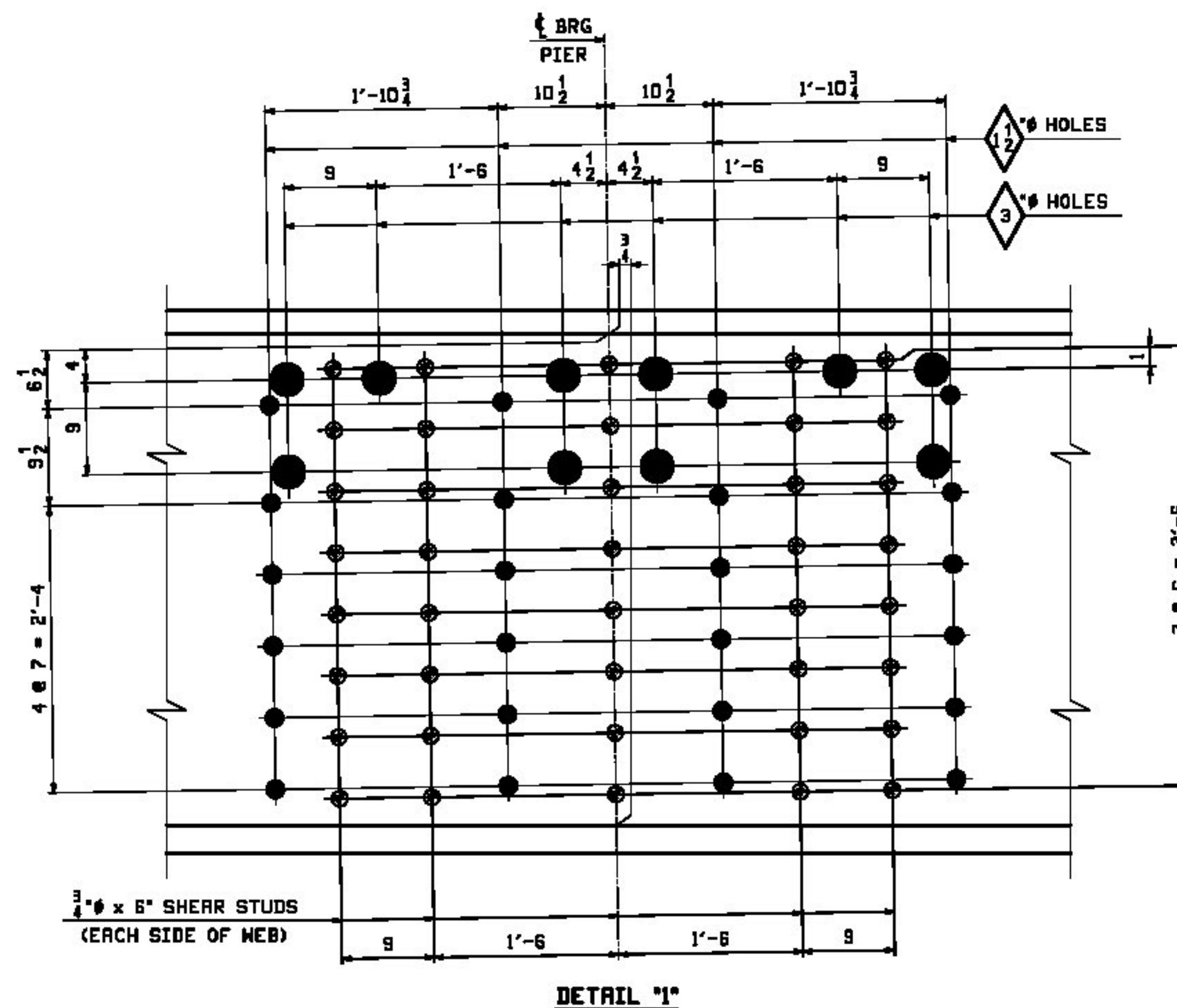
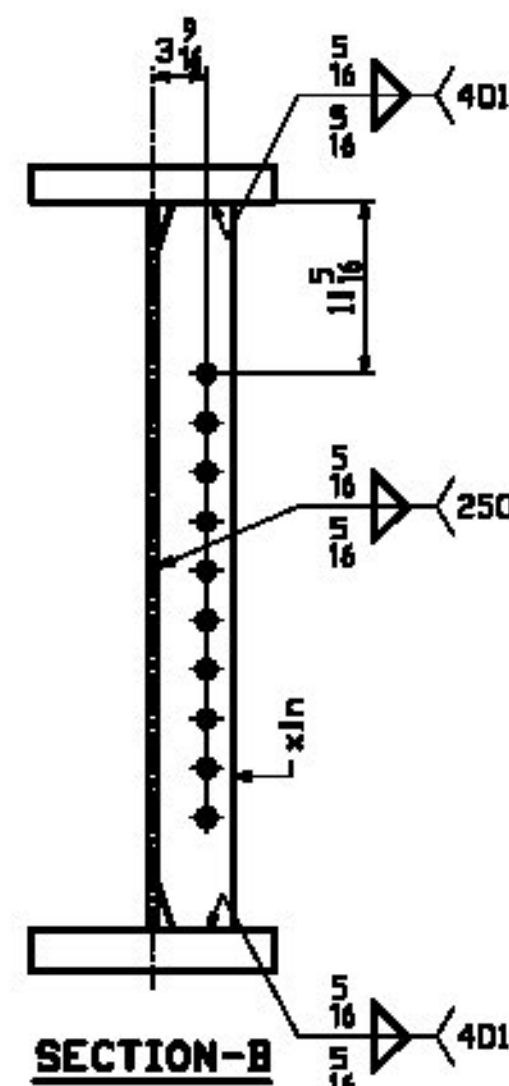
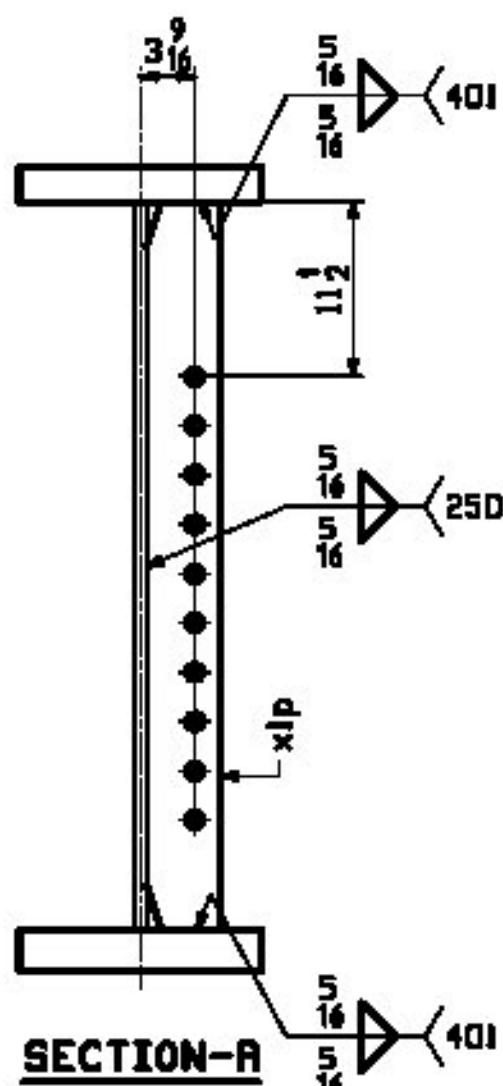
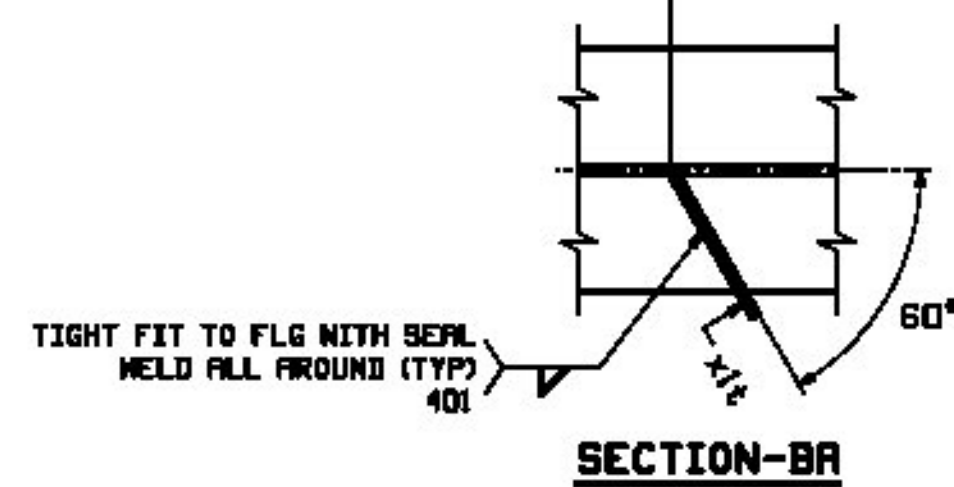


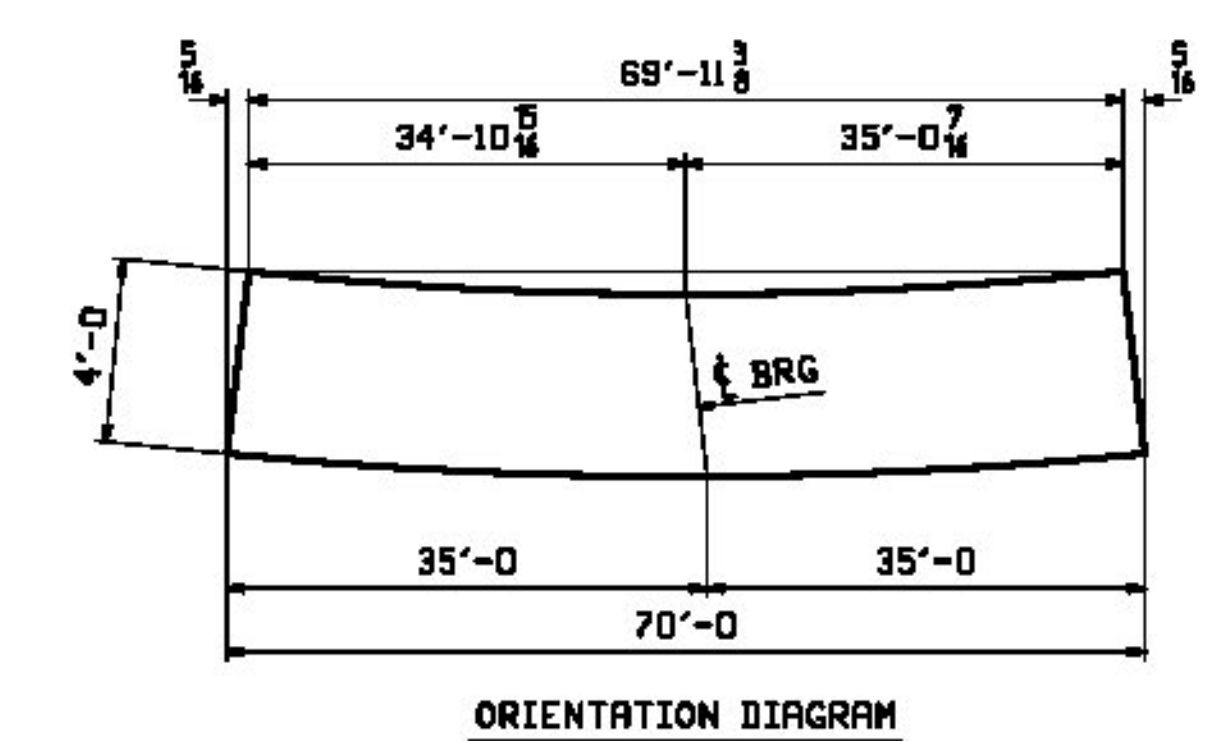
**ONE ~ GIRDER ~ 8G4B**

- NOTES:  
 1. FOR GENERAL NOTES SEE SHEET GNI.  
 2. FOR FIELD SPLICE DETAILS SEE SHEET XI.  
 3. FOR GIRDER STANDARD DETAILS SEE SHEET XI.  
 4. FOR CAMBER & FLANGE DIAGRAM SEE SHEET CI.  
 5. T2 - DENOTES CHARPY V-NOTCH TESTING REQUIRED.



JOB NO.		DRAWING NO.		REV.						
529-1		8								
PRG	LINE	MARK	QTY	MARK	MATERIAL	LENGTH FT	THICKNESS	REMARKS	WT	PROCUREMENT NOTES
		8G4B	1		GIRDER				26335	
1	L		1	wt	PL 3/8 x 18	70	0	M270-50MT2	7145	
1	C		1	ta	PL 2 1/2 x 16	65	11 3/8	M270-50MT2	8569	
1	A		1	lw	PL 2 1/2 x 16	70	0	M270-50MT2	10491	
2	M		1	xln	PL 2 x 5	4	0		34	
2	M		1	xlp	PL 2 x 5	4	0		34	
2	M		1	xlt	PL 4 x 4 1/2	0	10 1/2		4	
2	R		80		STUD 3/4	0	5	808	.65	

Vermont Agency of Transportation  
**RECEIVED**  
 CK'D BY GML/JWC OK'D BY GG  
 March 6, 2013  
 RESUBMIT Approved  
 BY KMH DATE 03/18/13



REV.	DATE	REMARKS	DWN	CHK	APVL	SHOP
0						
MATERIAL:		SURFACE PREP. & PAINT:		HOLES:		SHOP BOLTS:
M270-50M		SEE GNI		15/16" U.N.		NONE
DESCRIPTION: GIRDER ~ 8G4B						
CASCO BAY STEEL STRUCTURES, INC. 1 WALLACE AVE. PHONE (207) 780-6722 SOUTH PORTLAND, ME 04106 FAX. (207) 780-6726						
STRUCTURE: VT 100 OVER WARDSBORO BROOK			DRAWN: EEO		DATE: 02/04	
BRIDGE NO 78			CHKD: DBH		DATE: 02/27	
WINDHAM COUNTY						
LOCATION: TOWN OF JAMAICA, VT			JOB NO. 529-1		DWG NO. 8	
PROJ NO. ER-BRF 013-1(16)						
CUSTOMER: T. BUCK CONSTRUCTION					REV. 1	