

JOB NO.		DRAWING NO.		REV.			
529-1		7					
ROW	GROUP	BILL OF MATERIAL			REMARKS	WT	PROCUREMENT
LINE	MARK	QTY	MARK	MATERIAL	LENGTH FT	INCHES	NOTES
	7G3B	1		GIRDER			26400
1	L	1	wa	PL 3/8x18	70	0	M270-50WT2
1	C	1	ta	PL 2 1/2x16	69	11 3/8	M270-50WT2
1	A	1	ba	PL 2 1/2x16	70	0	M270-50WT2
2	M	2	x1m	PL 1/2x5	4	0	
2	M	1	x1n	PL 1/2x5	4	0	
2	M	1	x1p	PL 1/2x5	4	0	
2	R	80		STUD 3/4	0	6	808

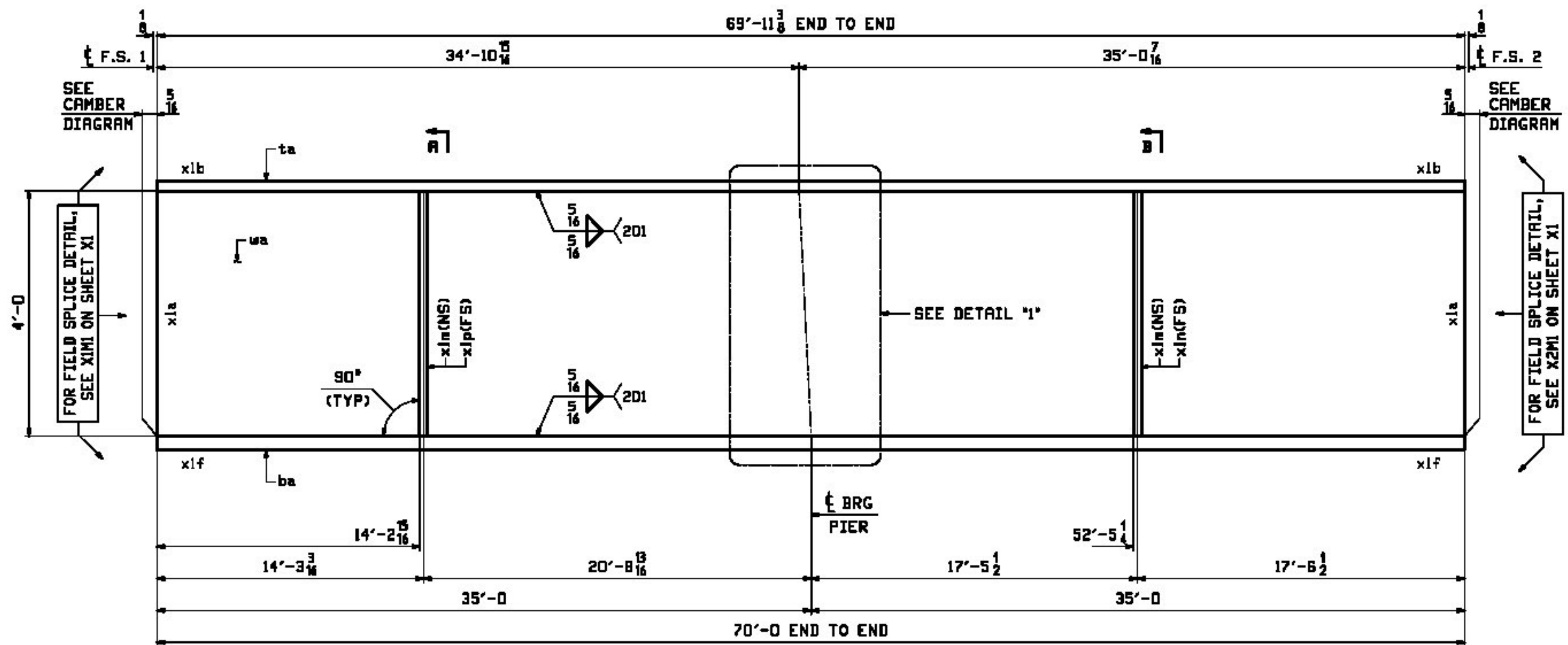
Vermont Agency of Transportation

RECEIVED

CK'D BY GML/JWC OK'D BY GG

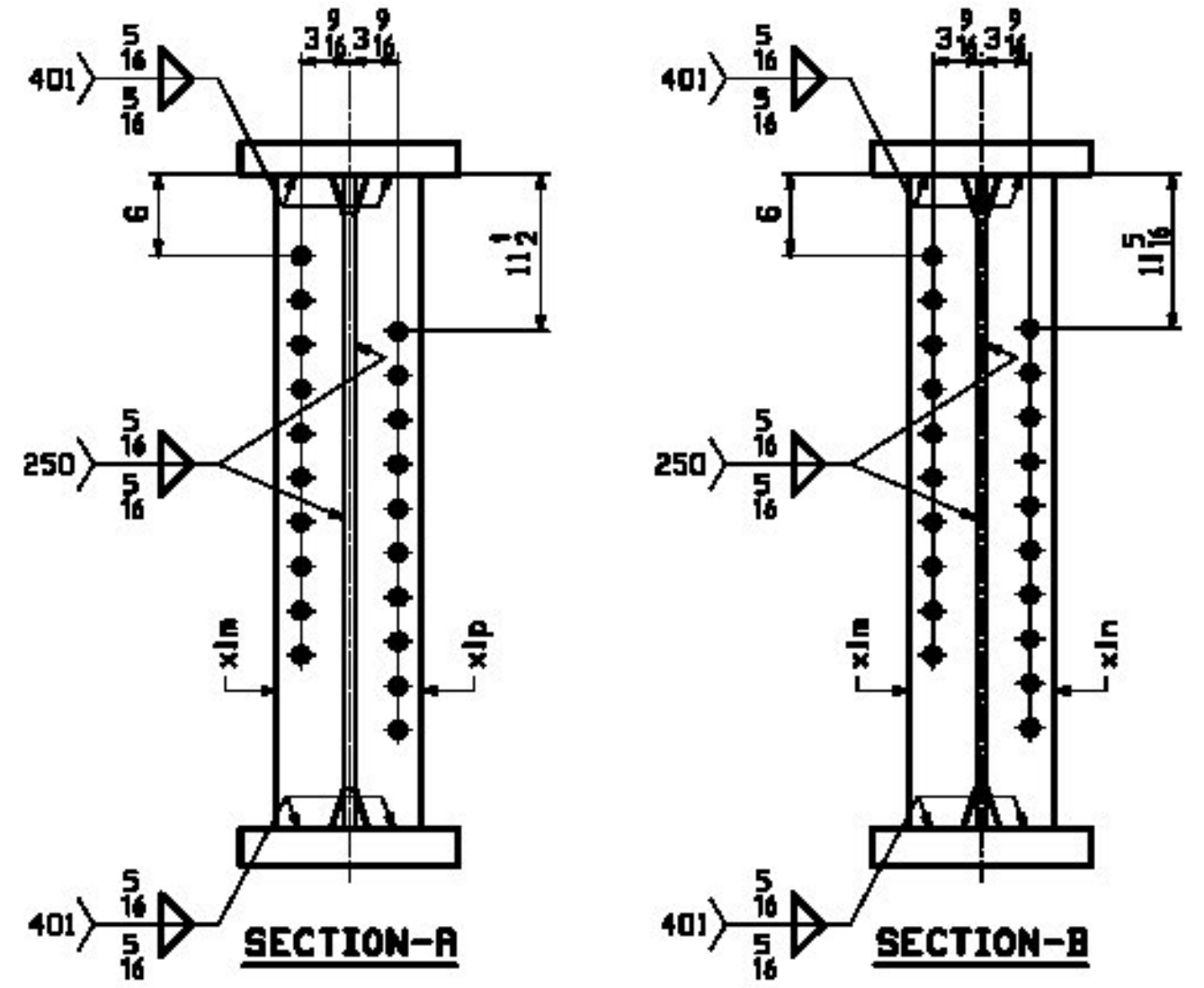
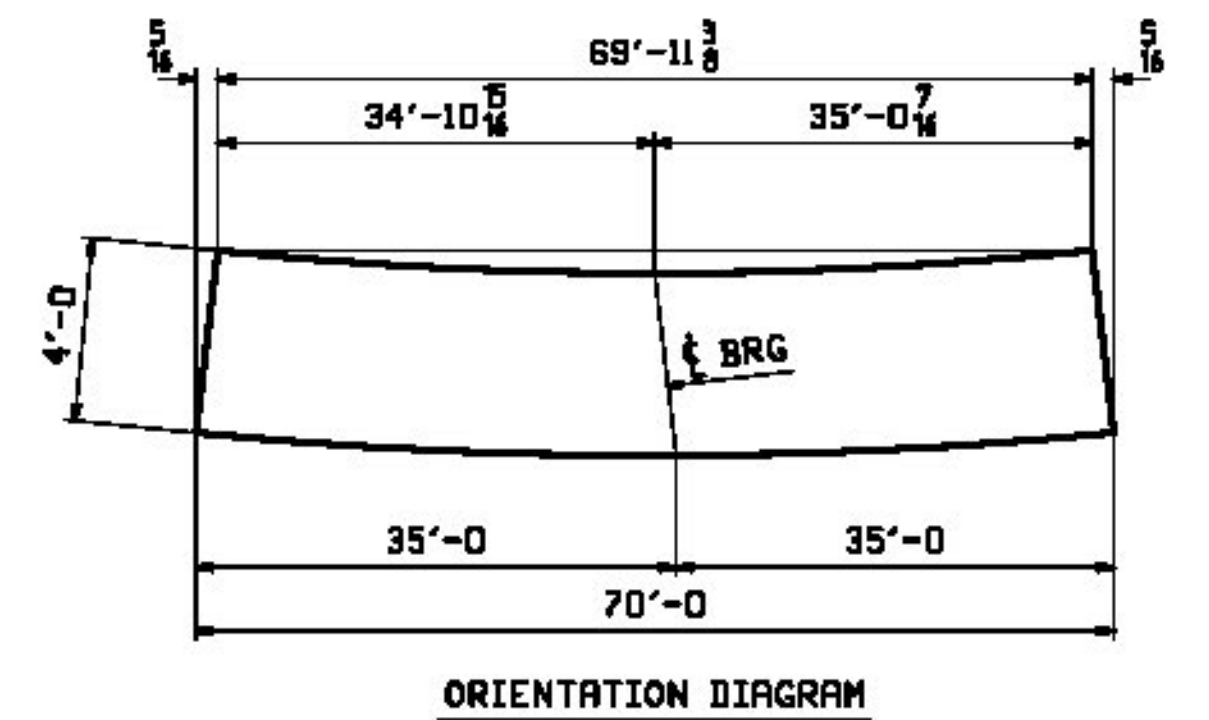
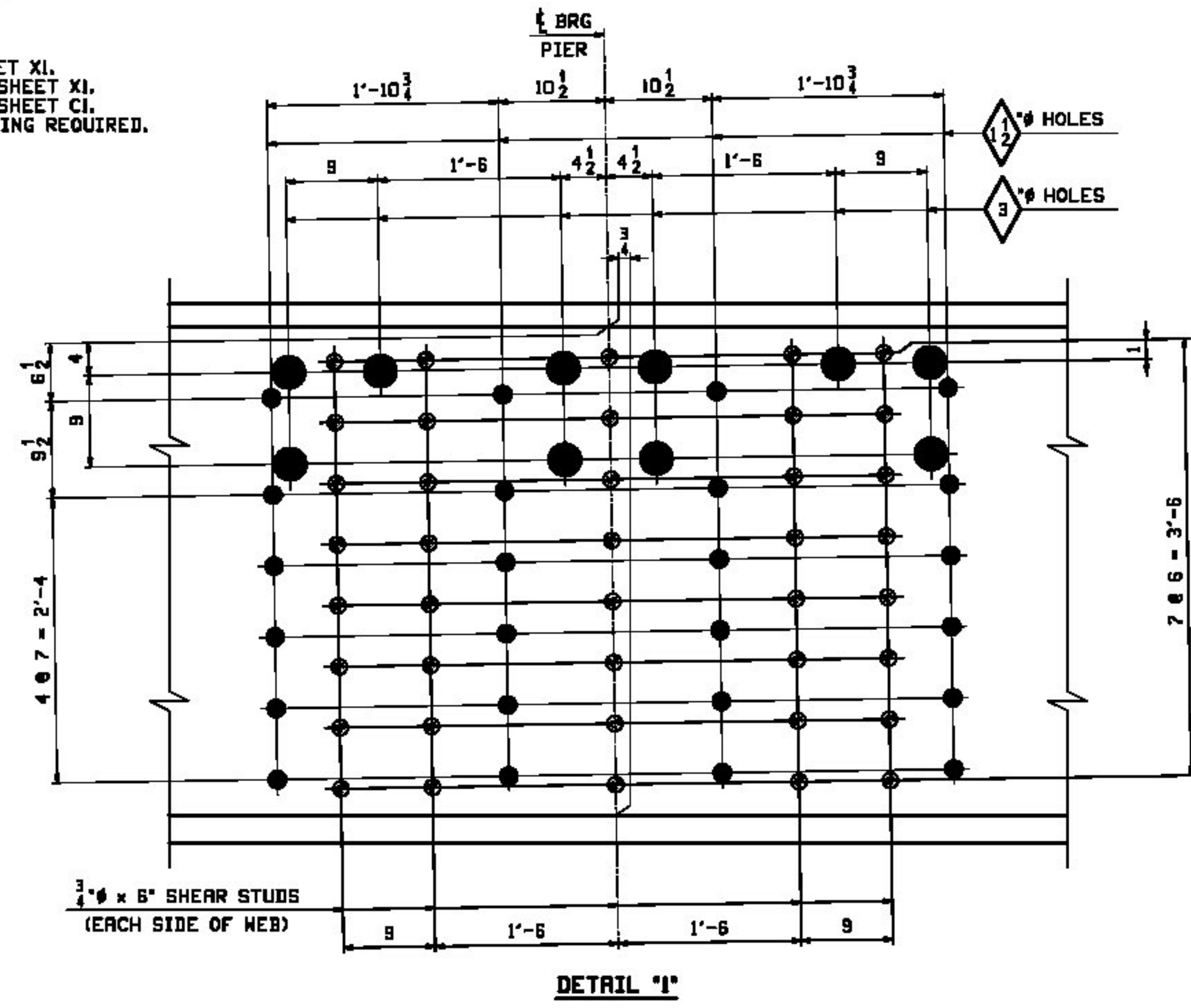
March 6, 2013

RESUBMIT Approved
BY KMH DATE 03/18/13



ONE ~ GIRDER ~ 7G3B

- NOTES:
 1. FOR GENERAL NOTES SEE SHEET GNI.
 2. FOR FIELD SPLICE DETAILS SEE SHEET XI.
 3. FOR GIRDER STANDARD DETAILS SEE SHEET XI.
 4. FOR CAMBER & FLANGE DIAGRAM SEE SHEET CI.
 5. T2 - DENOTES CHARPY V-NOTCH TESTING REQUIRED.



REV.	DATE	REMARKS	DWN	CHK	APVL	SHOP
0						
MATERIAL:		SURFACE PREP. & PAINT:		HOLES:		SHOP BOLTS:
M270-50M		SEE GNI		1 1/2" U.N.		NONE
DESCRIPTION: GIRDER ~ 7G3B						
CASCO BAY STEEL STRUCTURES, INC. 1 WALLACE AVE. PHONE (207) 780-6722 SOUTH PORTLAND, ME 04106 FAX. (207) 780-6726						
STRUCTURE: VT 100 OVER WARDSBORO BROOK			DRAWN: EEO		DATE: 02/04	
BRIDGE NO 78			CHKD: DBH		DATE: 02/27	
WINDHAM COUNTY						
LOCATION: TOWN OF JAMAICA, VT			JOB NO. 529-1		DWG NO. 7	
PROJ NO. ER-BRF 013-1(16)						
CUSTOMER: T. BUCK CONSTRUCTION					REV. 1	