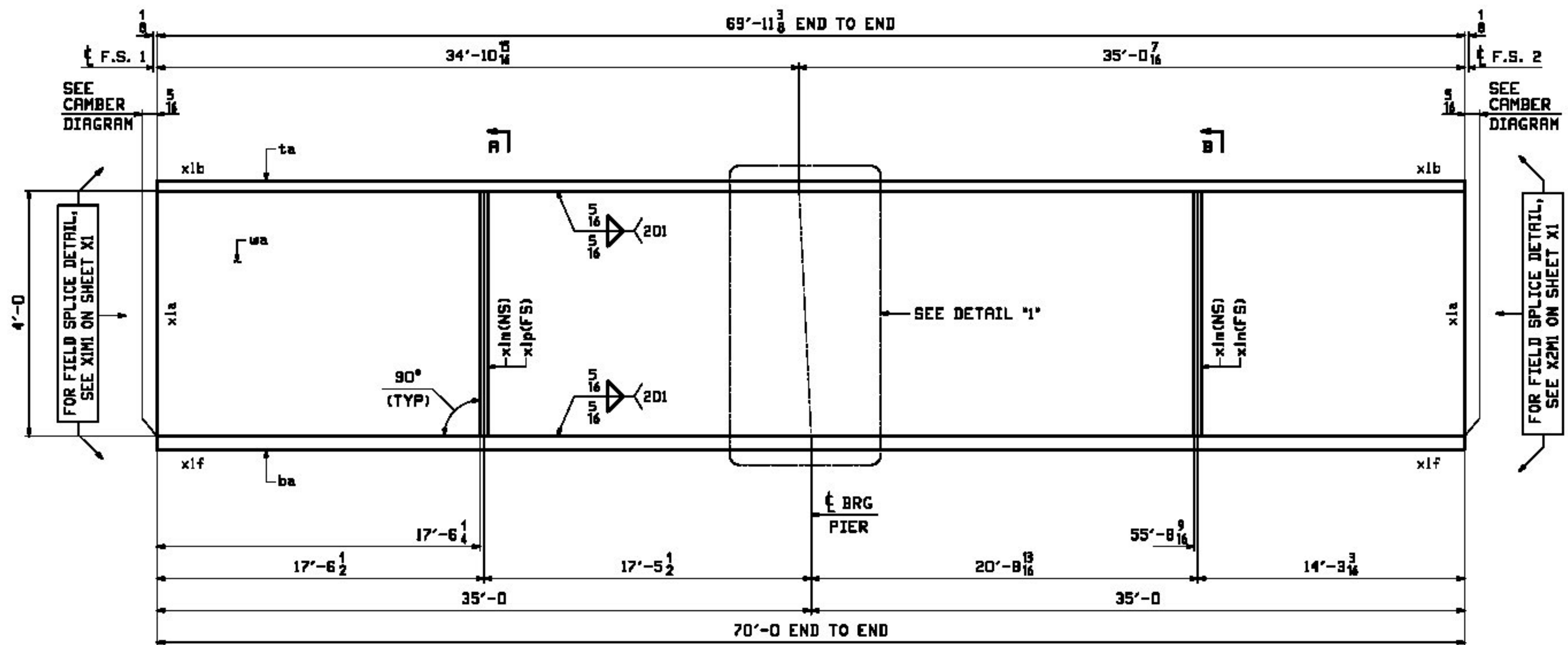


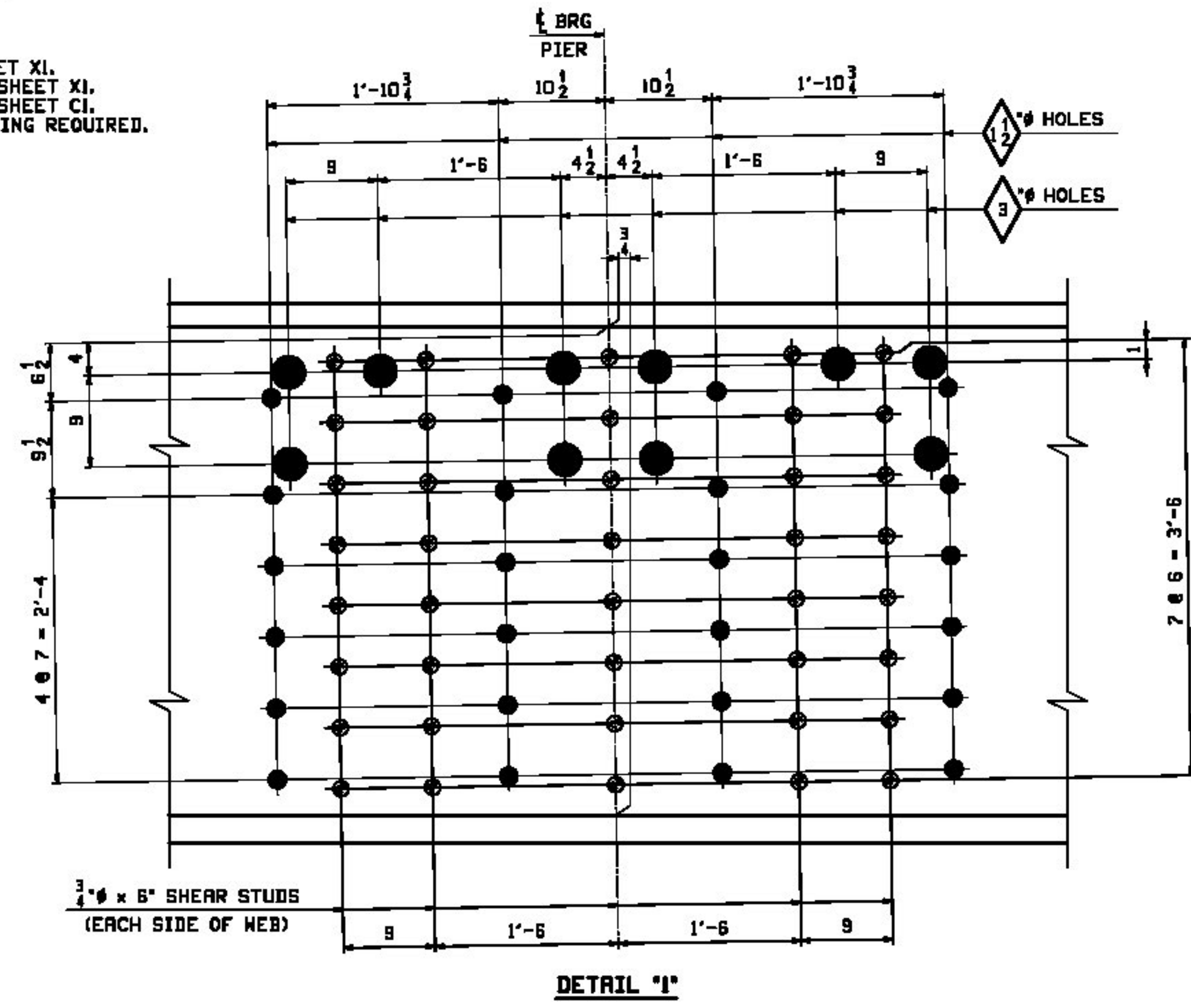
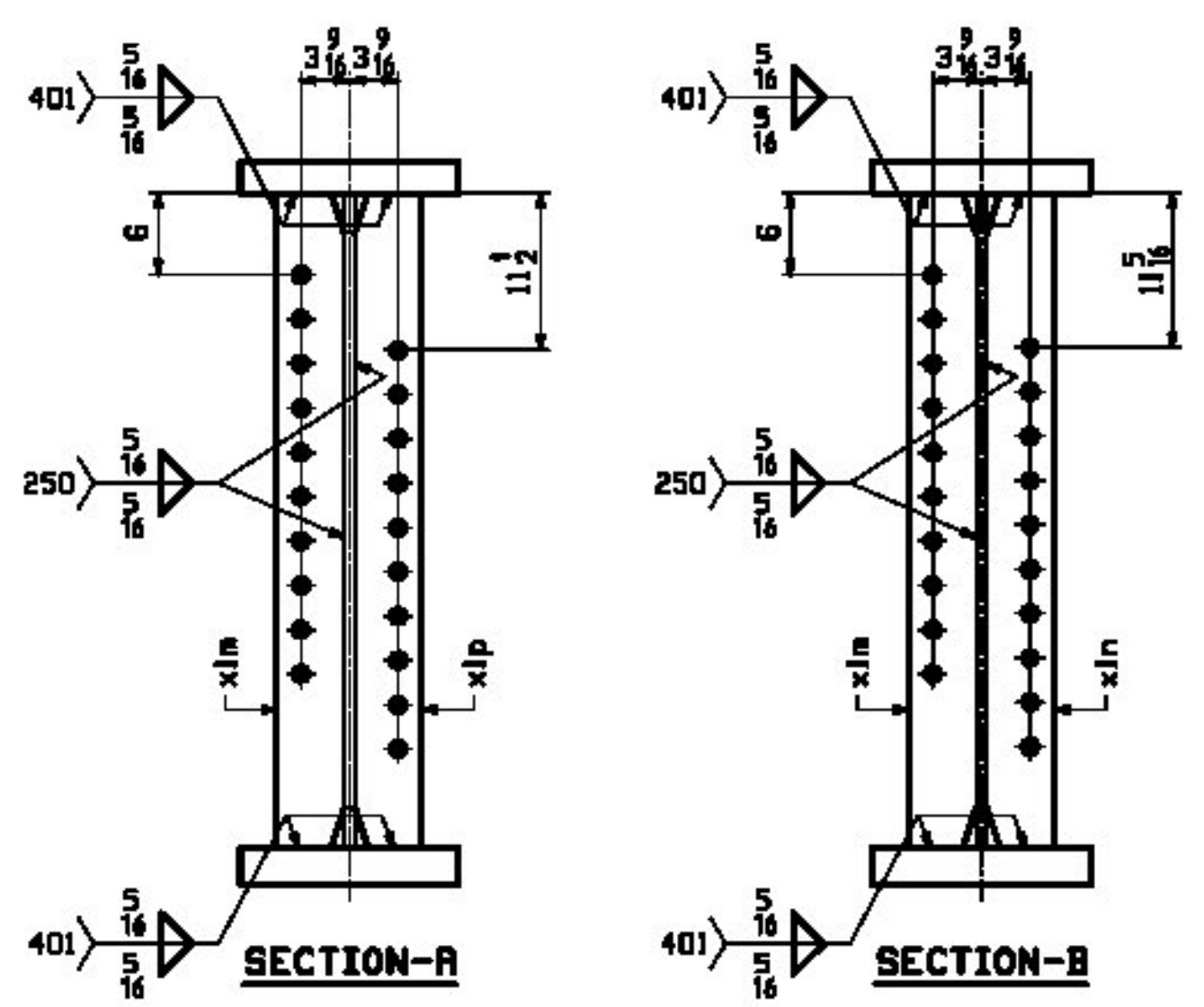
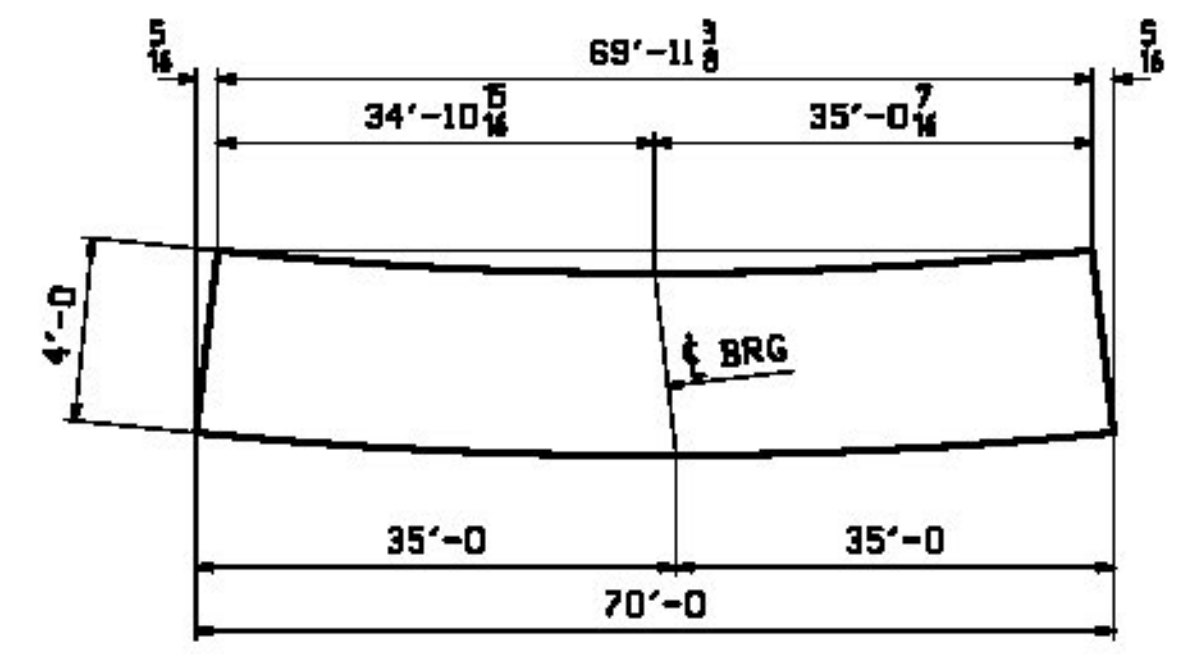
JOB NO.		DRAWING NO.		REV.			
529-1		6					
ROW INFO	GROUP	BILL OF MATERIAL			REMARKS	WT	PROCUREMENT NOTES
LINE	MARK	QTY	MARK	MATERIAL	LENGTH FT	INCHES	
	6G2B	1		GIRDER			26400
1	L	1	wa	PL 3/8x18	70	0	M270-50WT2
1	C	1	ta	PL 2 1/2x16	69	11 3/8	M270-50WT2
1	A	1	ba	PL 2 1/2x16	70	0	M270-50WT2
2	M	2	x1m	PL 1/2x5	4	0	
2	M	1	x1n	PL 1/2x5	4	0	
2	M	1	x1p	PL 1/2x5	4	0	
2	R	80	STUD 3/4		0	6	BLD



ONE ~ GIRDER ~ 6G2B

- NOTES:
 1. FOR GENERAL NOTES SEE SHEET GNI.
 2. FOR FIELD SPLICE DETAILS SEE SHEET XI.
 3. FOR GIRDER STANDARD DETAILS SEE SHEET XI.
 4. FOR CAMBER & FLANGE DIAGRAM SEE SHEET CI.
 5. T2 - DENOTES CHARPY V-NOTCH TESTING REQUIRED.

Vermont Agency of Transportation
RECEIVED
 CK'D BY GML/JWC OK'D BY GG
 March 6, 2013
 RESUBMIT Approved
 BY KMH DATE 03/18/13



REV.	DATE	REMARKS	DWN	CHK	APVL	SHOP
0						
MATERIAL:		SURFACE PREP. & PAINT:		HOLES:		SHOP BOLTS:
M270-50M		SEE GNI		1 1/2" & 3" U.N.		NONE
DESCRIPTION: GIRDER ~ 6G2B						
CASCO BAY STEEL STRUCTURES, INC. 1 WALLACE AVE. PHONE (207) 780-6722 SOUTH PORTLAND, ME 04106 FAX. (207) 780-6726						
STRUCTURE: VT 100 OVER WARDSBORO BROOK BRIDGE NO 78 WINDHAM COUNTY			DRAWN: EEO	DATE: 02/01		
			CHKD: DBH	DATE: 02/27		
LOCATION: TOWN OF JAMAICA, VT			JOB NO. 529-1	DWG NO. 6		
PROJ NO. ER-BRF 013-1(16)			CUSTOMER: T. BUCK CONSTRUCTION		REV. 1	