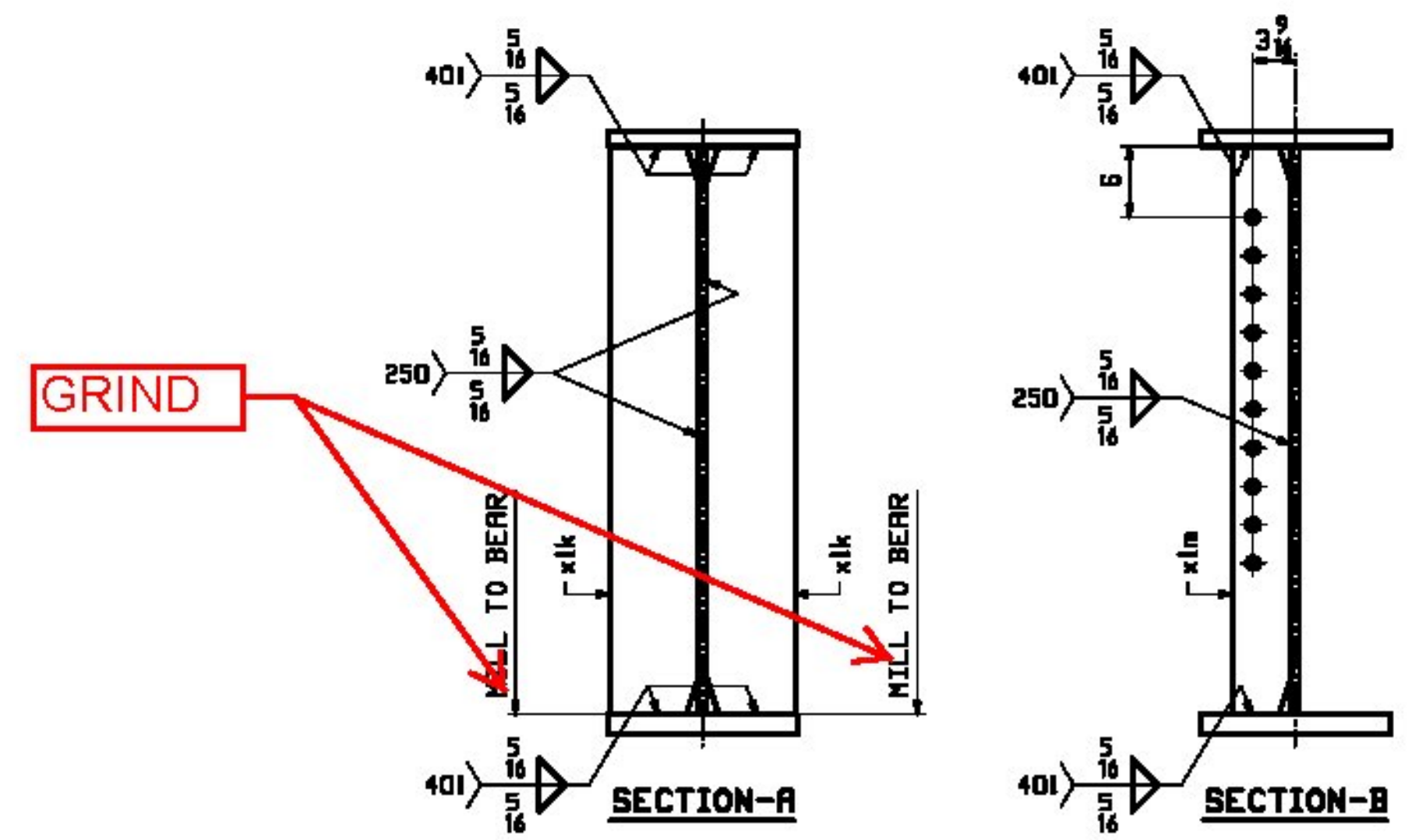
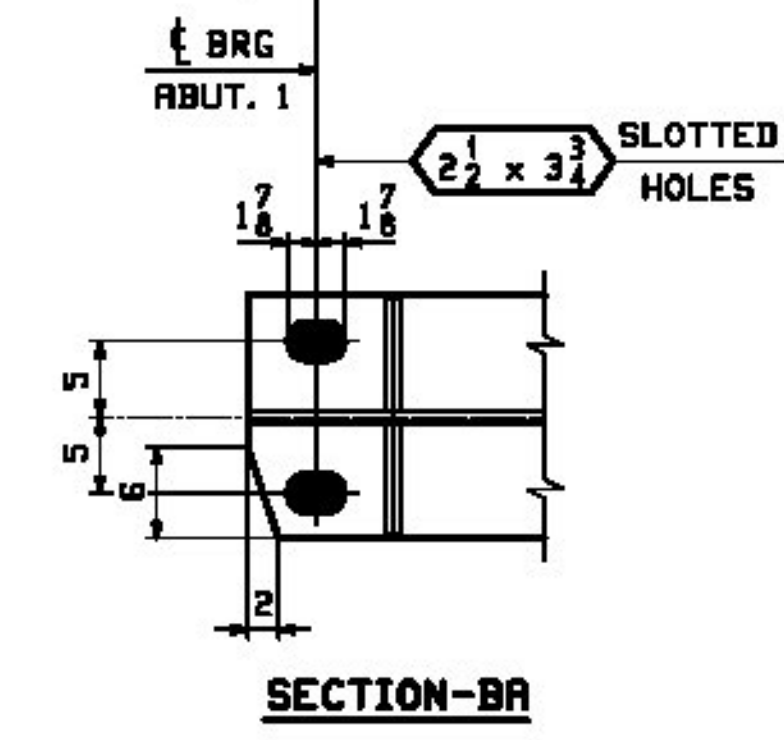


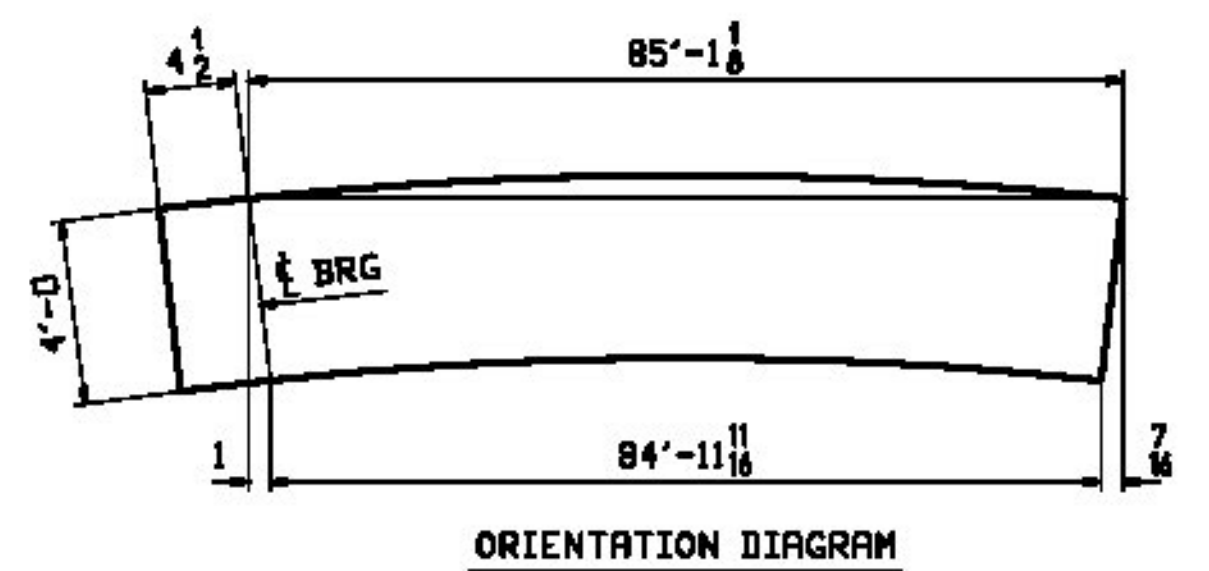
ONE ~ GIRDER ~ 1G1A

- NOTES:
 1. FOR GENERAL NOTES SEE SHEET GNI.
 2. FOR FIELD SPLICE DETAILS SEE SHEET X1.
 3. FOR GIRDER STANDARD DETAILS SEE SHEET X1.
 4. FOR CAMBER & FLANGE DIAGRAM SEE SHEET C1.
 5. T2 - DENOTES CHARPY V-NOTCH TESTING REQUIRED.



REV.		DATE		BY		CHK		APPV		SHOP	

REV.	DATE	REMARKS	DWN	CHK	APVL	SHOP



MATERIAL: M270-50M		SURFACE PREP. & PAINT: SEE GNI		HOLES: 15/16" U.N.		SHOP BOLTS: NONE	
DESCRIPTION: GIRDER ~ 1G1A							
CASCO BAY STEEL STRUCTURES, INC. 1 WALLACE AVE. PHONE (207) 780-6722 SOUTH PORTLAND, ME 04106 FAX. (207) 780-6726							
STRUCTURE: VT 100 OVER WARDSBORO BROOK BRIDGE NO 78 WINDHAM COUNTY				DRAWN: ECO DATE: 02/01		CHKD: DBH DATE: 02/27	
LOCATION: TOWN OF JAMRICH, VT				JOB NO. 529-1		DWG NO. 1	
PROJ NO. ER-BRF 013-1(16)				CUSTOMER: T. BUCK CONSTRUCTION		REV. 1	

Vermont Agency of Transportation
RECEIVED
 CK'D BY GMLJWC OK'D BY GG
 March 6, 2013
 RESUBMIT NO Approved AsNoted
 BY KMH DATE 04/02/13