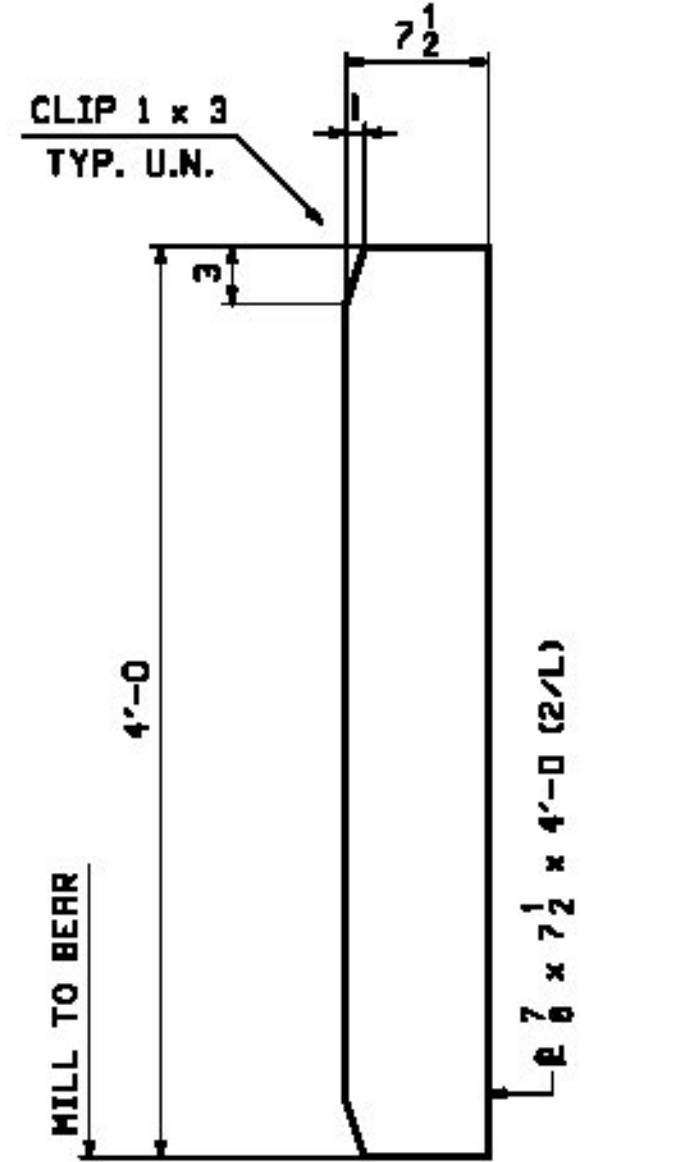
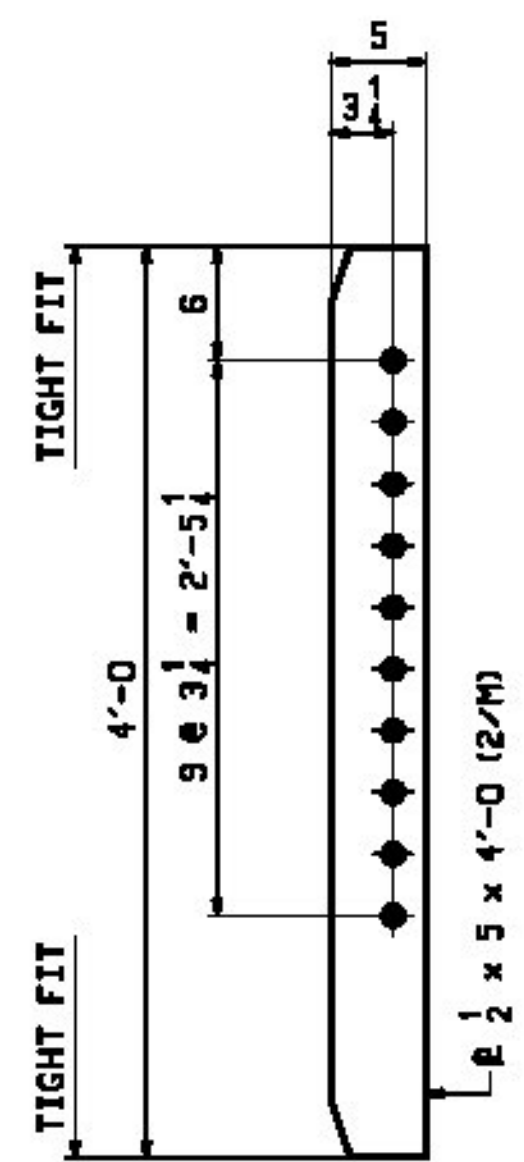


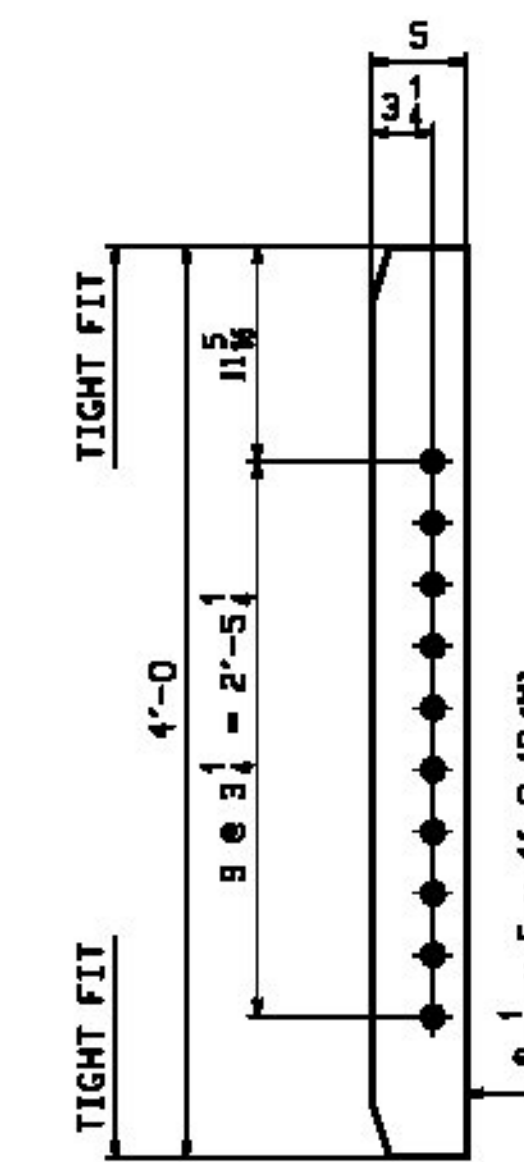
4 ~ FIELD SPlice DETAIL ~ XIM1 (AS SHOWN)
FIELD SPlice 1
4 ~ FIELD SPlice DETAIL ~ XIM2 (ROTATE 180°)
FIELD SPlice 2



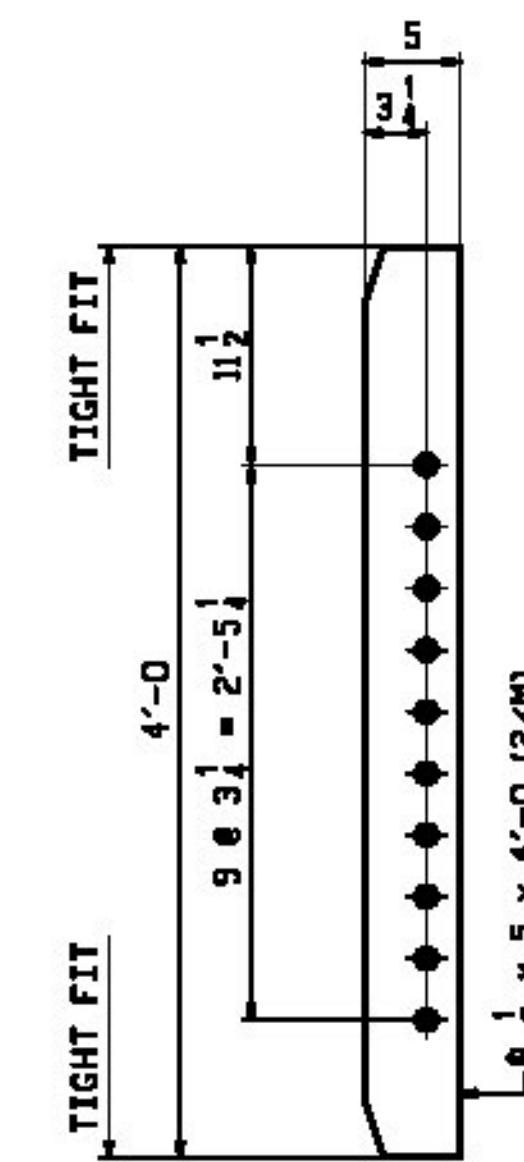
16 ~ BRG STIFF. ~ xlk
@ ABUT'S



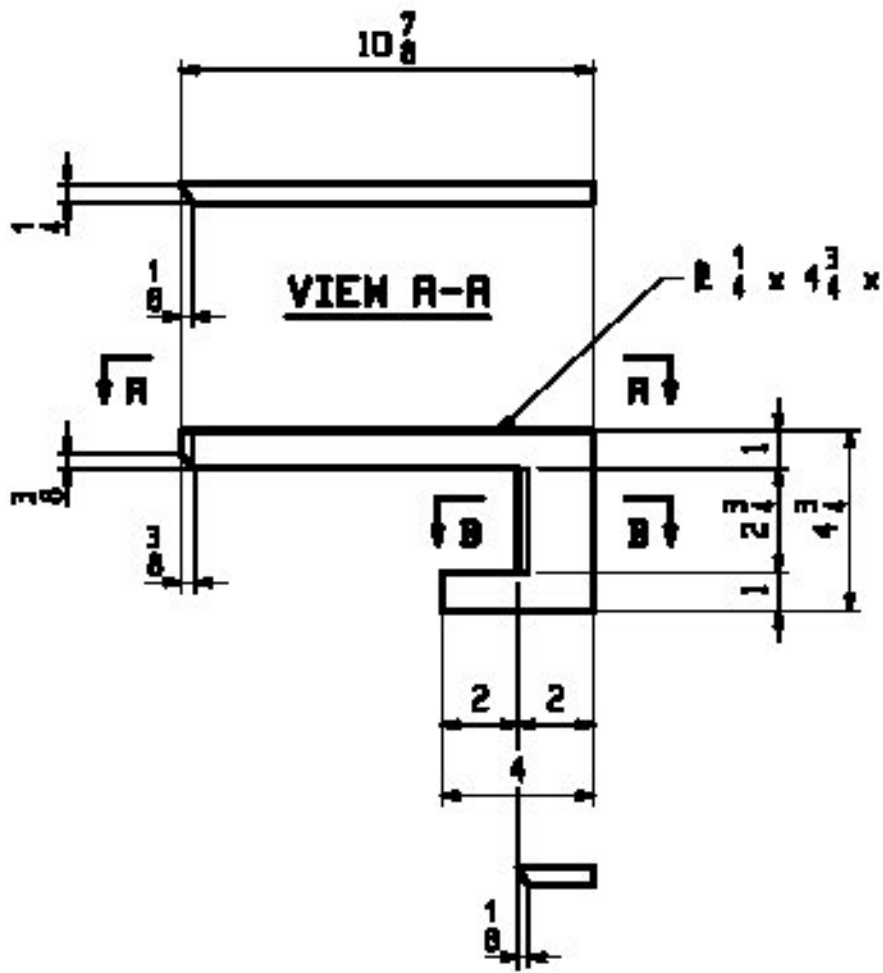
28 ~ CONN. PLATE ~ xlm
LOW SIDE



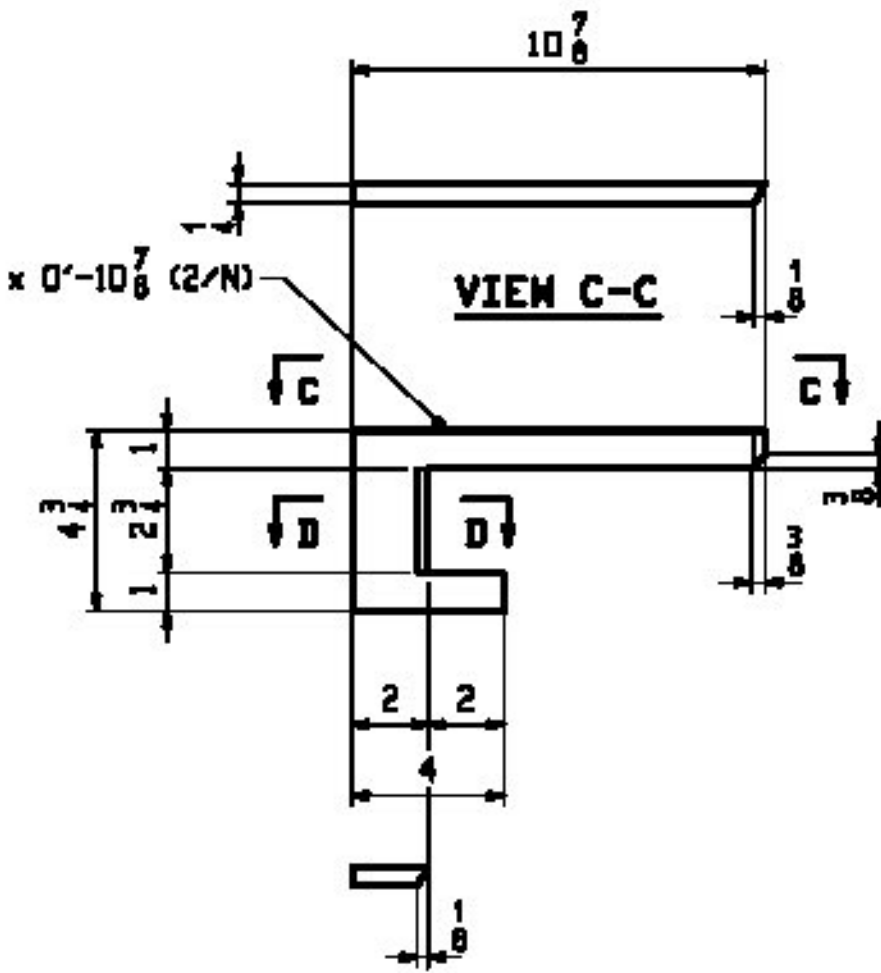
15 ~ CONN. PLATE ~ xln
HIGH SIDE @ 5 1/4 - 5 3/8 DROP



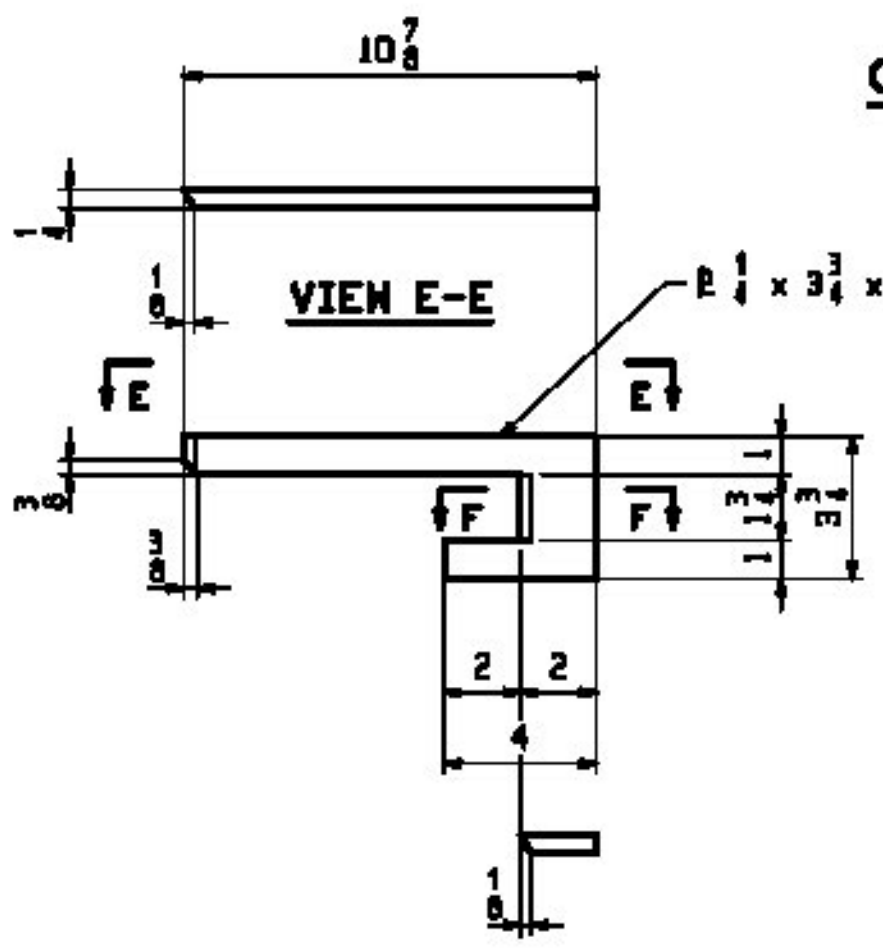
13 ~ CONN. PLATE ~ xlp
HIGH SIDE @ 5 7/16 - 5 9/16 DROP



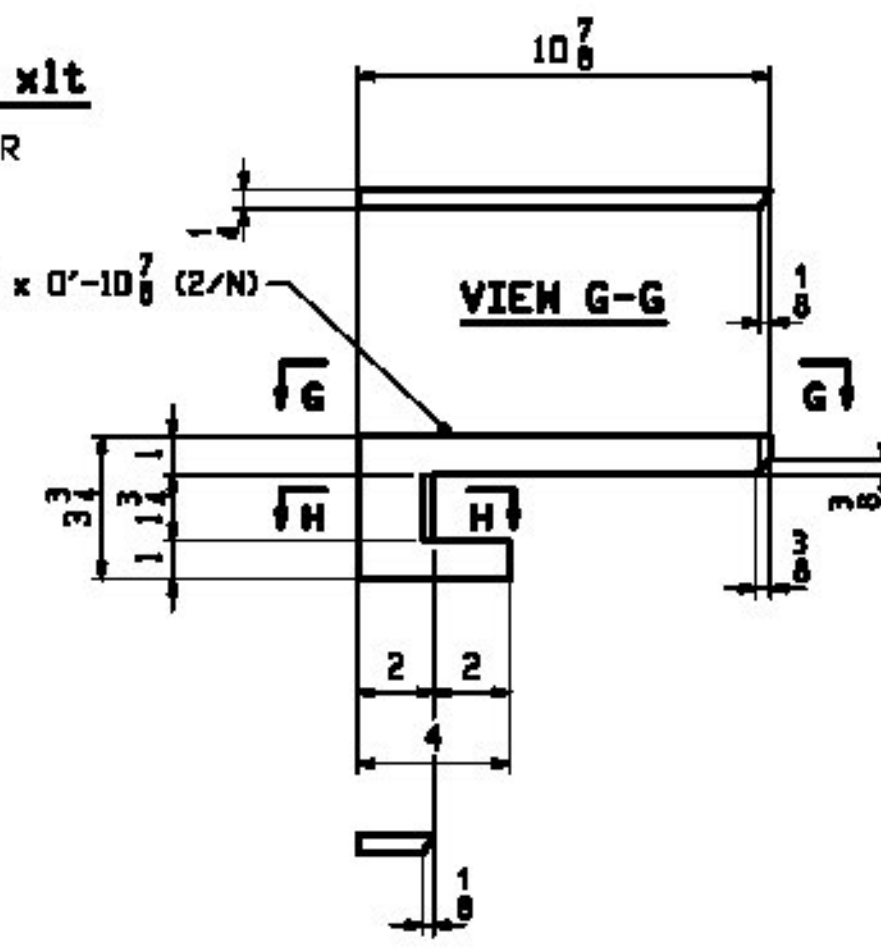
ONE ~ DRIP PLATE ~ xls
FAR SIDE OF G1 @ PIER



ONE ~ DRIP PLATE ~ xlt
NEAR SIDE OF G4 @ PIER



ONE ~ DRIP PLATE ~ xlv
FAR SIDE OF G1 @ ABUT. 2



ONE ~ DRIP PLATE ~ xlw
NEAR SIDE OF G4 @ ABUT. 2

JOB NO.		DRAWING NO.		REV.			
529-1		X1					
LINE	MARK	QTY	MATERIAL	LENGTH	REMARKS	WT	PROCUREMENT
				FT			NOTES
				INCHES			
	XIM1	4	FIELD SPlice 1				1079
2	B	8	xla	PL 1/2 x 3 3/4	1 7/2		M270-S0M12
2	C	4	xlb	PL 1/2 x 16	3 7/2		M270-S0M12
2	D	8	xlc	PL 1/2 x 7 1/2	3 7/2		M270-S0M12
2	E	4	xld	PL 1 x 16	1 9/8		FILL
2	F	4	xle	PL 1/2 x 16	4 1/2		M270-S0M12
2	G	8	xlf	PL 1/2 x 7 1/2	4 1/2		M270-S0M12
2	H	4	xlh	PL 1 x 16	2 0 5/8		FILL
	XIM2	4	FIELD SPlice 2				1079
2	B	8	xla	PL 1/2 x 3 3/4	1 7/2		M270-S0M12
2	C	4	xlb	PL 1/2 x 16	3 7/2		M270-S0M12
2	D	8	xlc	PL 1/2 x 7 1/2	3 7/2		M270-S0M12
2	E	4	xld	PL 1 x 16	1 9/8		FILL
2	F	4	xle	PL 1/2 x 16	4 1/2		M270-S0M12
2	G	8	xlf	PL 1/2 x 7 1/2	4 1/2		M270-S0M12
2	H	4	xlh	PL 1 x 16	2 0 5/8		FILL

NOTE:
MATERIAL FOR FIELD SPlices BILLED HERE ONLY.
ALL OTHER MATERIAL BILLED ON DETAIL DRAWINGS.

Vermont Agency of Transportation
RECEIVED

CK'D BY GML/JWC OK'D BY GG

March 6, 2013

RESUBMIT Approved
BY KMH DATE 03/18/13

- NOTES:
- FOR GENERAL NOTES SEE DRAWING GNI.
 - HOLES IN SPlice PLATES ARE PRE-DRILLED.
 - ENDS OF GIRDERS ARE DRILLED FROM SOLID DURING SHOP ASSEMBLY, USING SPlice PLATES AS A TEMPLATE.
 - T2 - DENOTES CHARPY V-NOTCH TESTING REQUIRED.
 - D.O.R. - DENOTES DIRECTION OF MILL ROLLING.

REV.	DATE	REMARKS	DWN	CHK	APVL	SHOP
0						
MATERIAL:		SURFACE PREP. & PAINT:		HOLES:		SHOP BOLTS:
M270-S0M		SEE GNI		1/2" - 1/4"		NONE
DESCRIPTION: GIRDER STANDARDS						
CASCO BAY STEEL STRUCTURES, INC.						
1 WALLACE AVE.			PHONE (207) 780-6722			
SOUTH PORTLAND, ME 04106			FAX. (207) 780-6726			
STRUCTURE:		DRAWN:		DATE:		
VT 100 OVER WARDSBORO BROOK		ECO		01/31		
BRIDGE NO 78		CHKD:		DATE:		
WINDHAM COUNTY		DBH		02/27		
LOCATION: TOWN OF JARRICH, VT		JOB NO.		DWG NO.		
PROJ NO. ER-BRF 013-1(16)		529-1		X1		
CUSTOMER: T. BUCK CONSTRUCTION				REV. A		