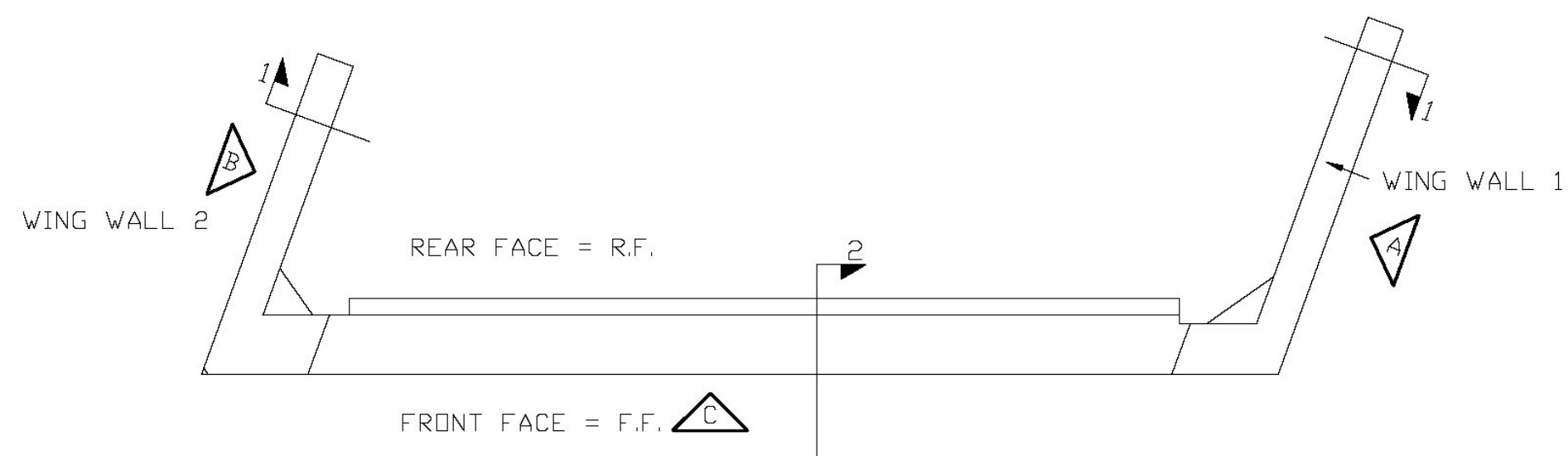
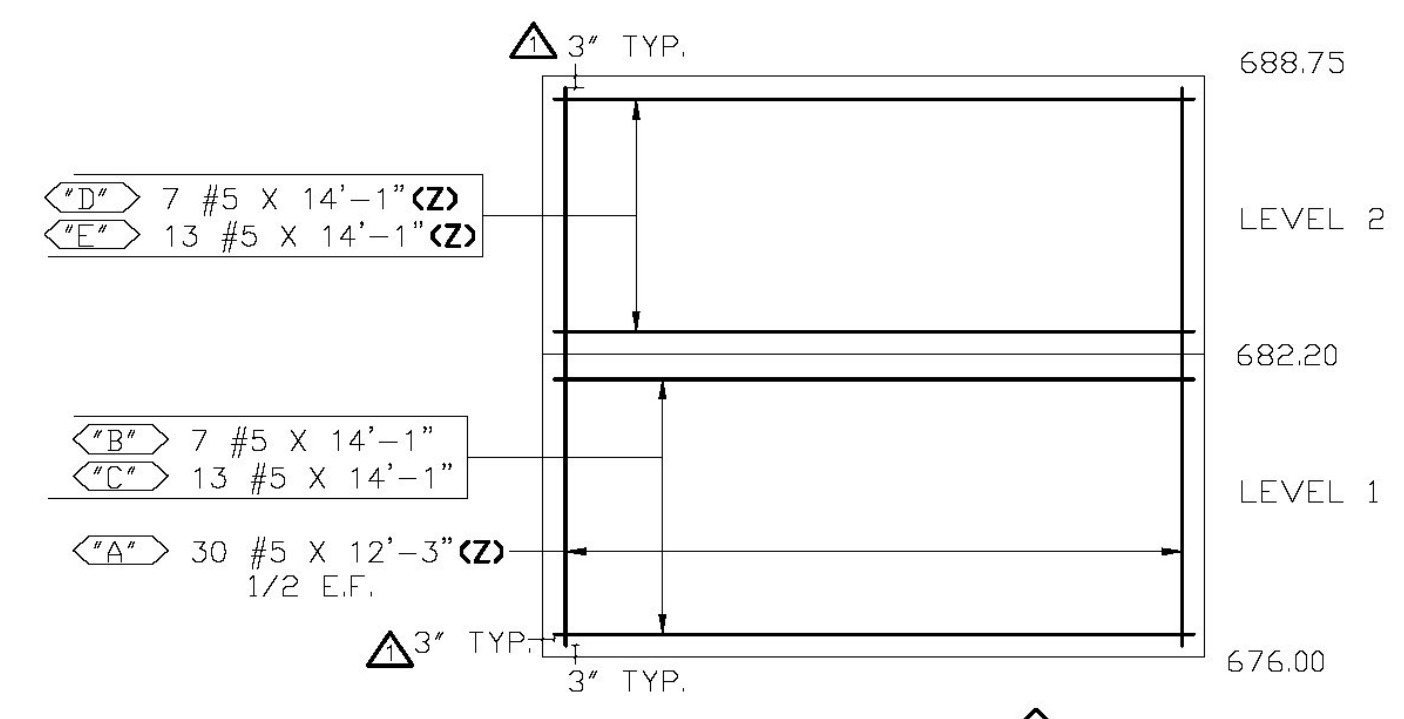


10 x C DIMENSION 2'-0"  
55 x C DIMENSION 2'-8"  
9 x C DIMENSION 1'-8"

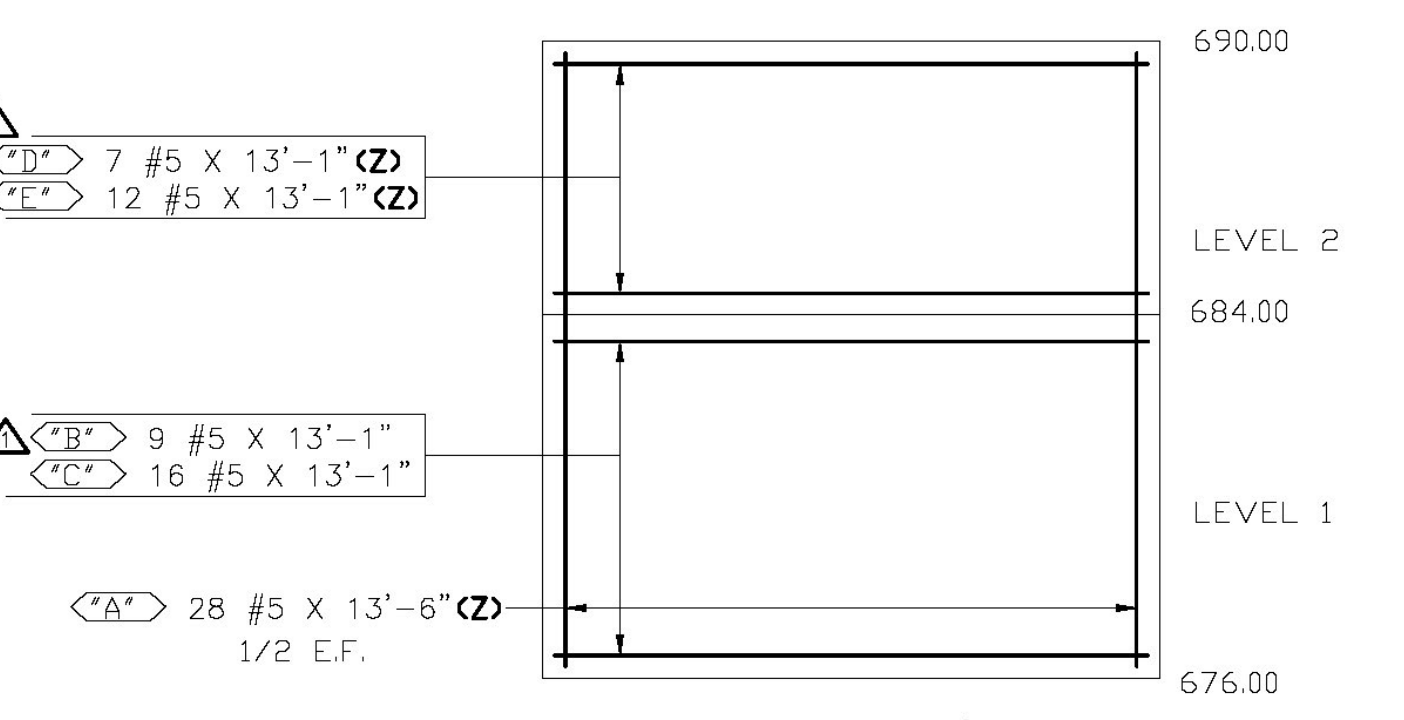


ABUTMENT PLAN



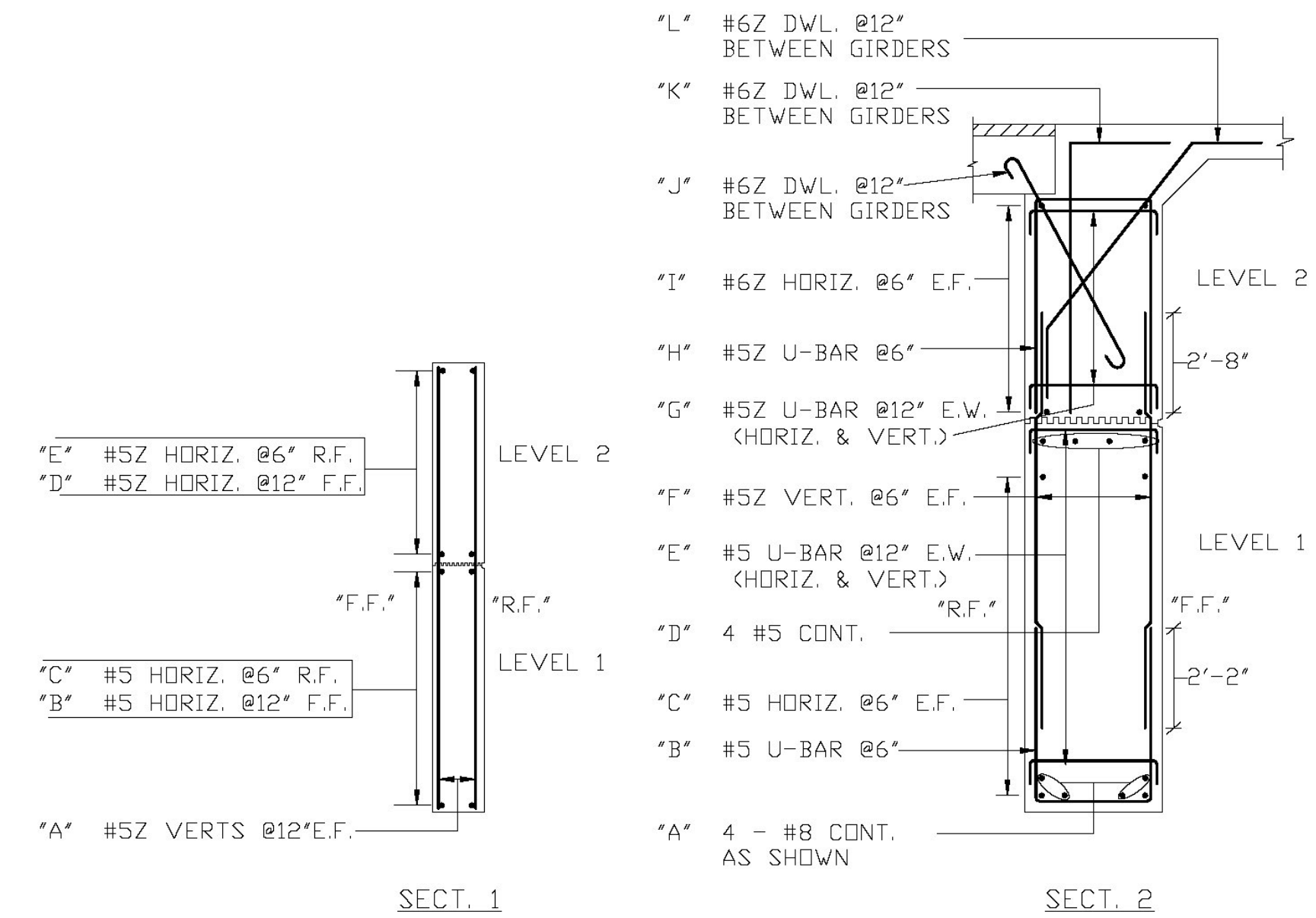
ELEVATION A

WINGWALL 1  
ALL BAR LENGTHS REVISED PER NEW CLEARANCE DIMENSION



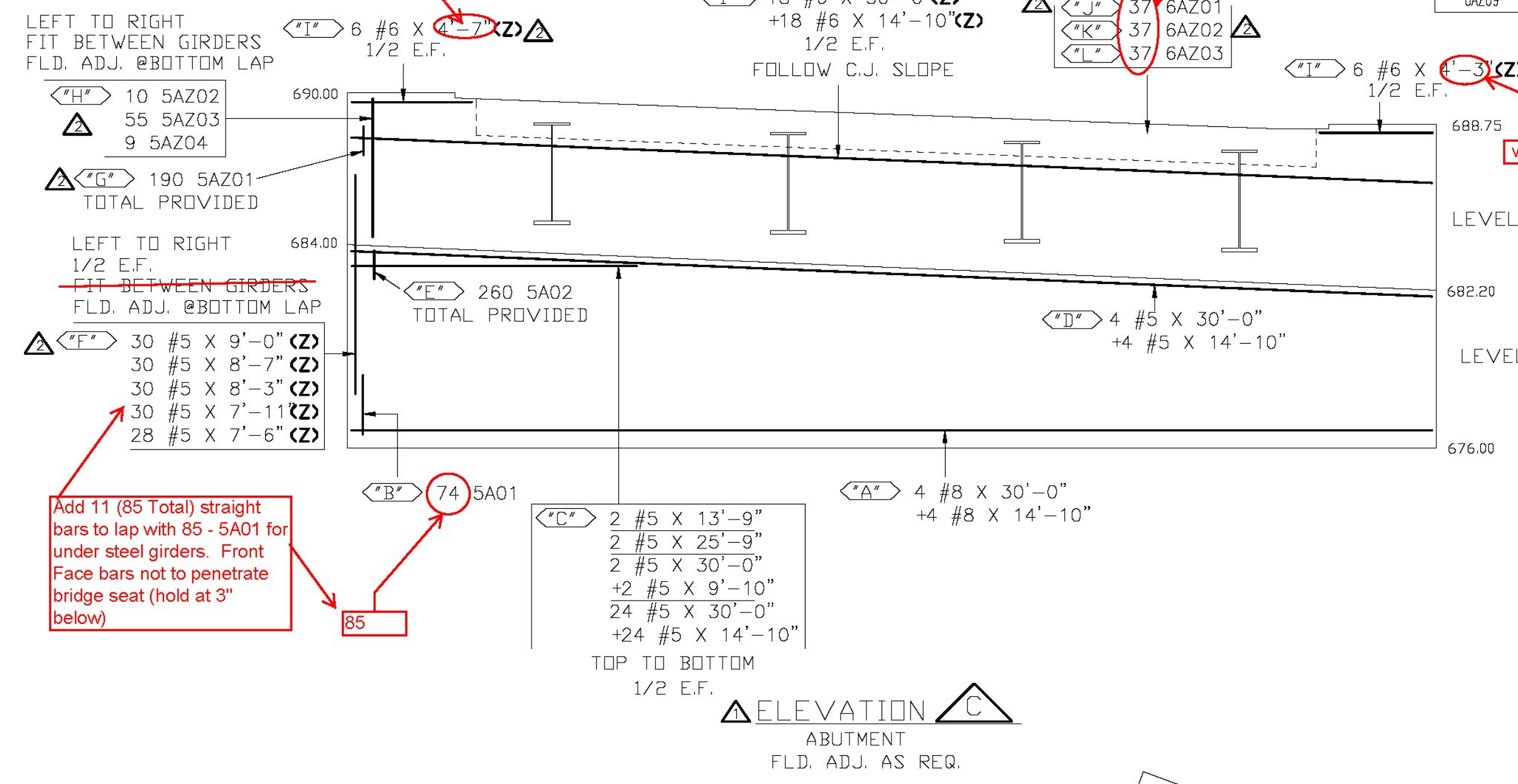
ELEVATION B

WINGWALL 2  
ALL BAR LENGTHS REVISED PER NEW CLEARANCE DIMENSION

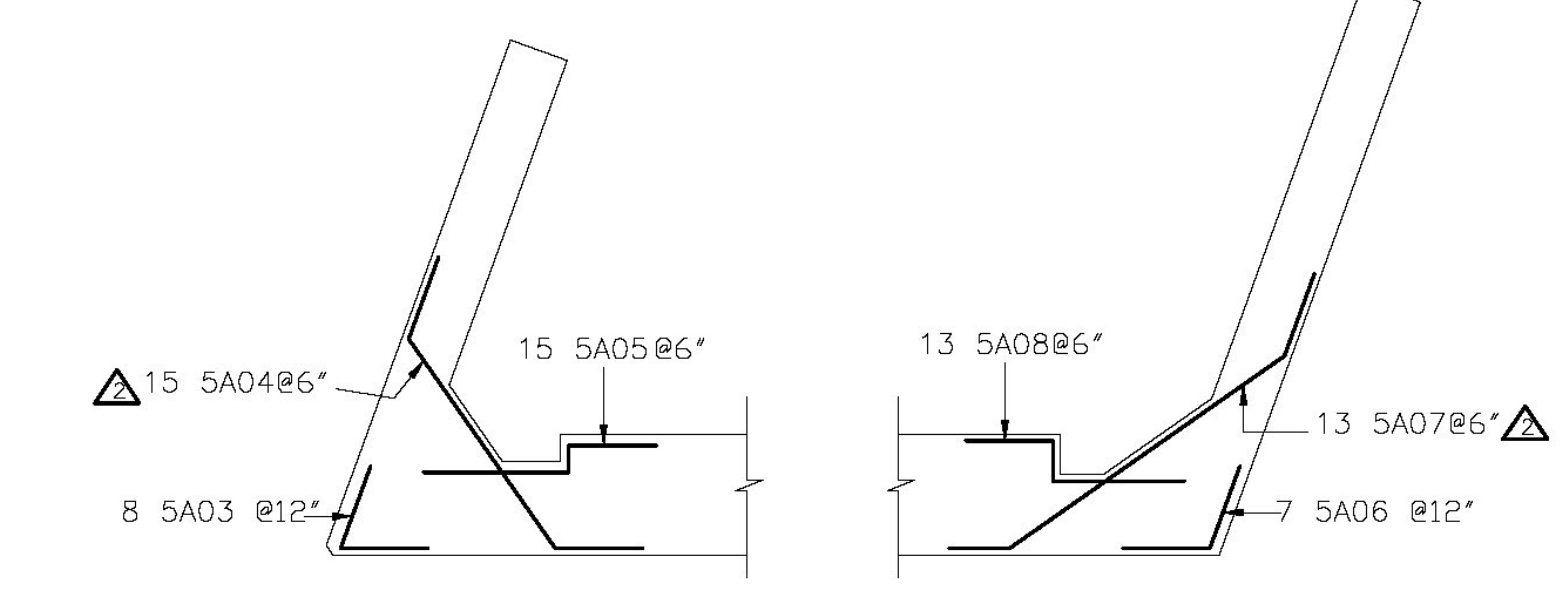


SECT. 1

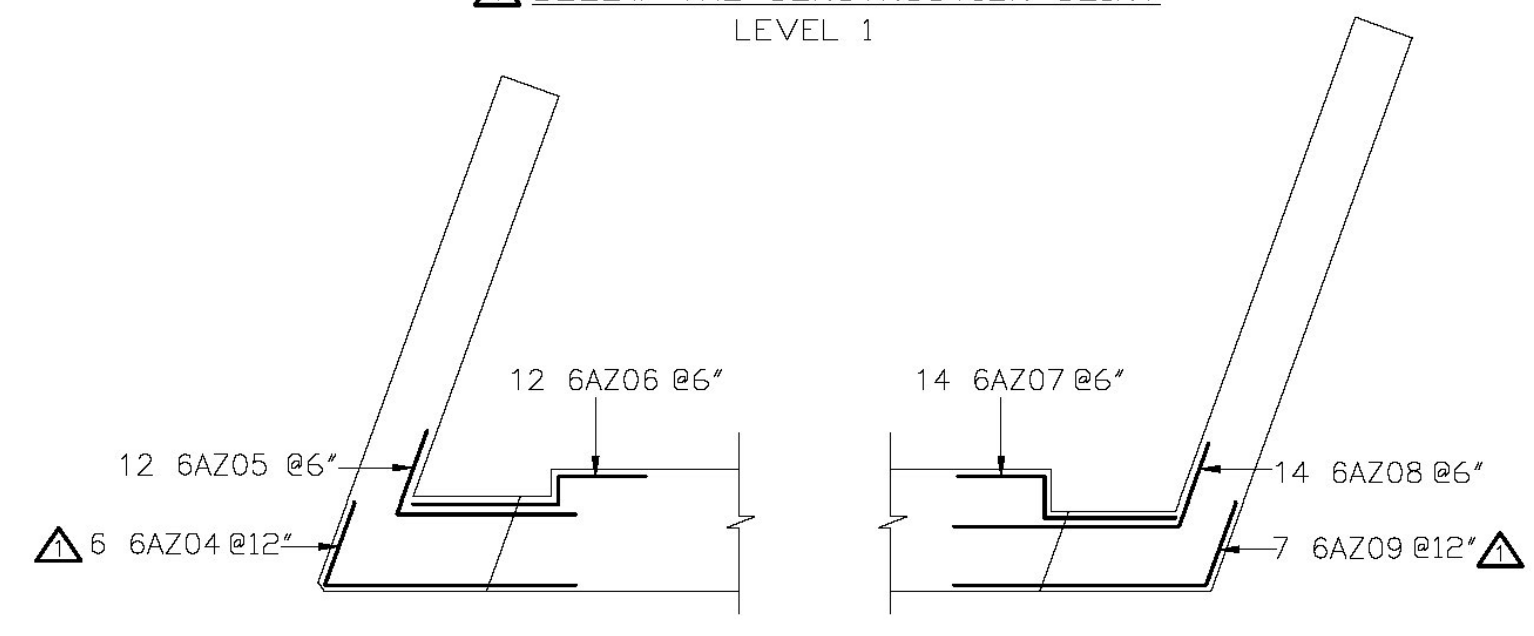
SECT. 2



ELEVATION C  
ABUTMENT  
FLD. ADJ. AS REQ.



BELOW THE CONSTRUCTION JOINT  
LEVEL 1



ABOVE THE CONSTRUCTION JOINT  
LEVEL 2

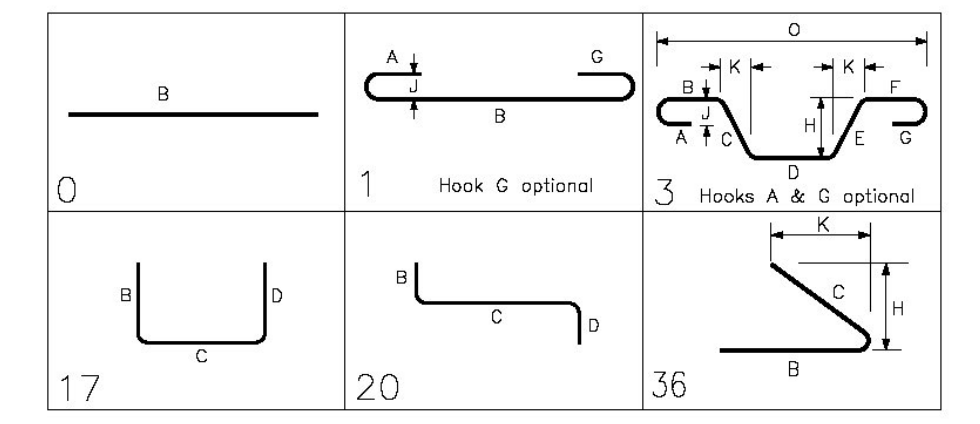
CORNER BARS  
FLD. ADJ. AS REQ.

Release Number: 005

Bar Mark	Qty	Size	Total Length	Type	'A'	'B'	'C'	'D'	'E'	'F'	'G'	'H'	'J'	'K'	'O'	'R'
5A01	74	#5	10'-1"	17		3'-9"	2'-7"	3'-9"								
5A02	260	#5	4'-3"	17		0'-10"	2'-8"	0'-10"								
5A03	8	#5	4'-4"	36		2'-2"	2'-2"					2'-0 1/2"		0'-8 1/2"		
5A04	15	#5	9'-1 1/2"	3			1'-5 1/2"	6'-2"	1'-5 1/2"			1'-2 1/2"		0'-10 1/2"	7'-10 1/2"	
5A05	15	#5	6'-5"	20		2'-2"		0'-8"	3'-7"							
5A06	7	#5	4'-3 1/2"	3		2'-2"	2'-1 1/2"					2'-0 1/2"		0'-8 1/2"	2'-10 1/2"	
5A07	13	#5	10'-11 1/2"	3			1'-5 1/2"	8'-0"	1'-5 1/2"			0'-10 1/2"		1'-2 1/2"	10'-5 1/2"	
5A08	13	#5	6'-5"	20		2'-2"		1'-0"	3'-3"							

Release Number: 006

Bar Mark	Qty	Size	Total Length	Type	'A'	'B'	'C'	'D'	'E'	'F'	'G'	'H'	'J'	'K'	'O'	'R'
5A201	190	#5	4'-3"	17			0'-10"	2'-8"	0'-10"							
5A202	10	#5	13'-5"	17			5'-5"	1'-11"	5'-5"							
5A203	55	#5	10'-7"	17			4'-0"	2'-8"	4'-0"							
5A204	9	#5	14'-1"	17			5'-9"	1'-8"	5'-9"							
6A201	37	#6	6'-4"	1	0'-8"	5'-0"										
6A202	37	#6	7'-2"	17			7'-2"	5'-0"				0'-8"		0'-6"		
6A203	37	#6	8'-0"	3			8'-0"	1'-6"	5'-0"	1'-6"		1'-0 1/2"		1'-0 1/2"	7'-1 1/2"	
6A204	6	#6	8'-5"	36		6'-3"	2'-2"					2'-0 1/2"		0'-8 1/2"		
6A205	12	#6	7'-2"	36		5'-0"	2'-2"					2'-0 1/2"		0'-8 1/2"		
6A206	12	#6	6'-5"	20		2'-2"	0'-8"	3'-7"								
6A207	14	#6	6'-5"	20		2'-2"		1'-0"	3'-3"							
6A208	14	#6	7'-8 1/2"	3		5'-7"	2'-1 1/2"					2'-0 1/2"		0'-8 1/2"	6'-3 1/2"	
6A209	7	#6	8'-4 1/2"	3		6'-3"	2'-1 1/2"					2'-0 1/2"		0'-8 1/2"	6'-11 1/2"	



We GET 27 PLANS SHOW BETWEEN GIRDERS ONLY.

We get 3'-9"

we get 3'-9"

Add 11 (85 Total) straight bars to lap with 85 - 5A01 for under steel girders. Front Face bars not to penetrate bridge seat (hold at 3" below)

NOTE: BAR MARKS MAY CHANGE WHEN DIMENSION IS REVISED  
LAP = 2'-2" U.N.D.

-ELEVATIONS & DIMENSIONS SHOWN ON THIS DWG. ARE FOR REINF. DETAILING PURPOSES ONLY AND ARE NOT INTENDED FOR CONSTRUCTION.  
-BLACK REINF. BARS - ASTM A615 GRADE 60  
-DUAL COATED BAR - ASTMA1055 (Z BAR)  
-DUAL COATED BAR DENOTED (Z)

FOR APPROVAL

6			
5			
4			
3	04/02/13	REV'D/ENG. COMM./APPROVAL	
2	03/22/13	REV'D/ENG. COMM./APPROVAL	
1	02/19/13	0 APPROVAL	
	DATE	REV.#	SENT FOR
STRUCTURE	VTAOT JAMAICA ER BR F 013-1(16)		
LOCATION	JAMAICA, VT		
ARCHITECT			
ENGINEER			
CUSTOMER	T. BUCK CONSTRUCTION		
DRAWN BY	DATE	DT #	
WAYNE	02/19/13	8421	
DRAWING COVERS			DRAWING #
ABUTMENT 1 REINF.			A