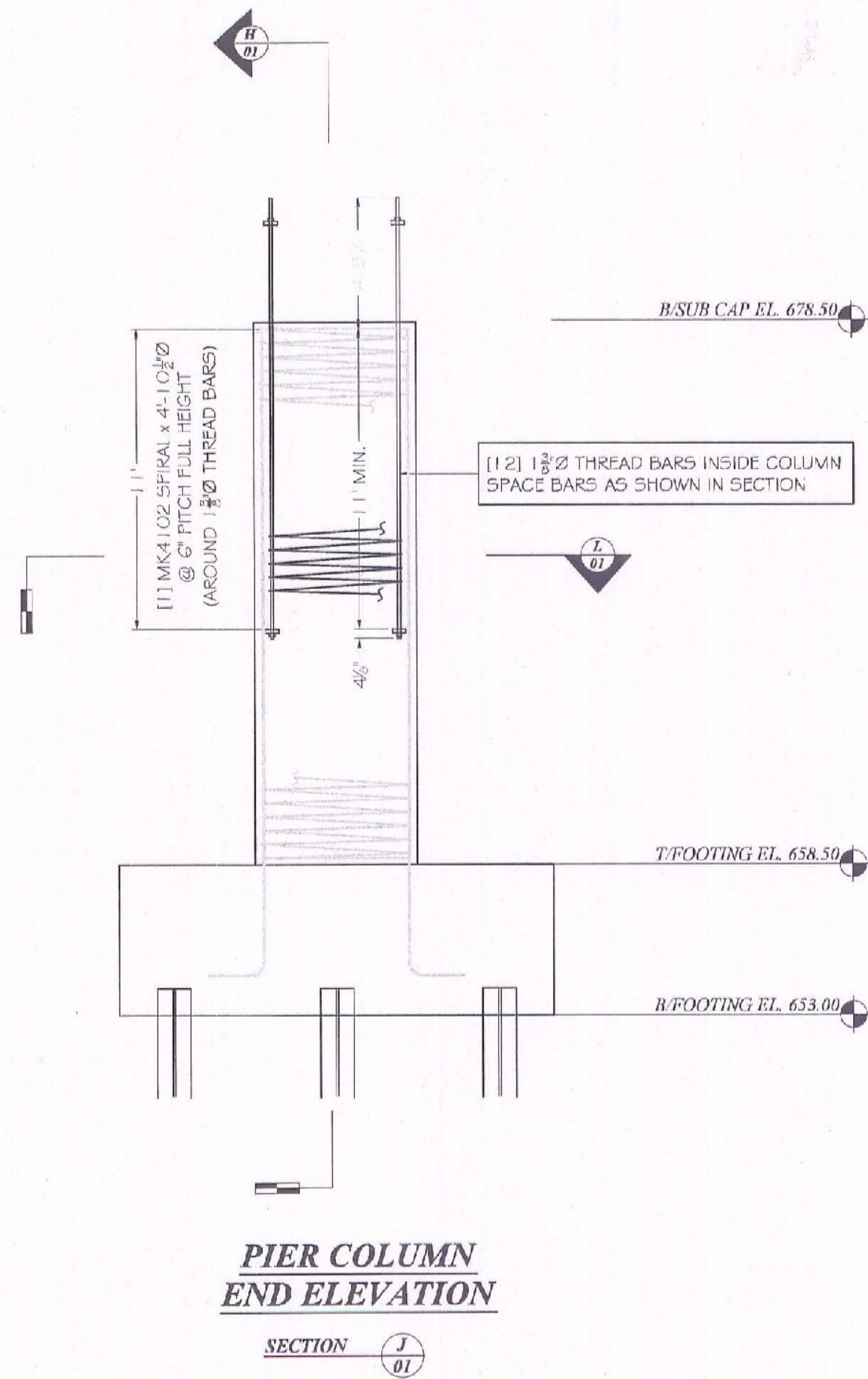
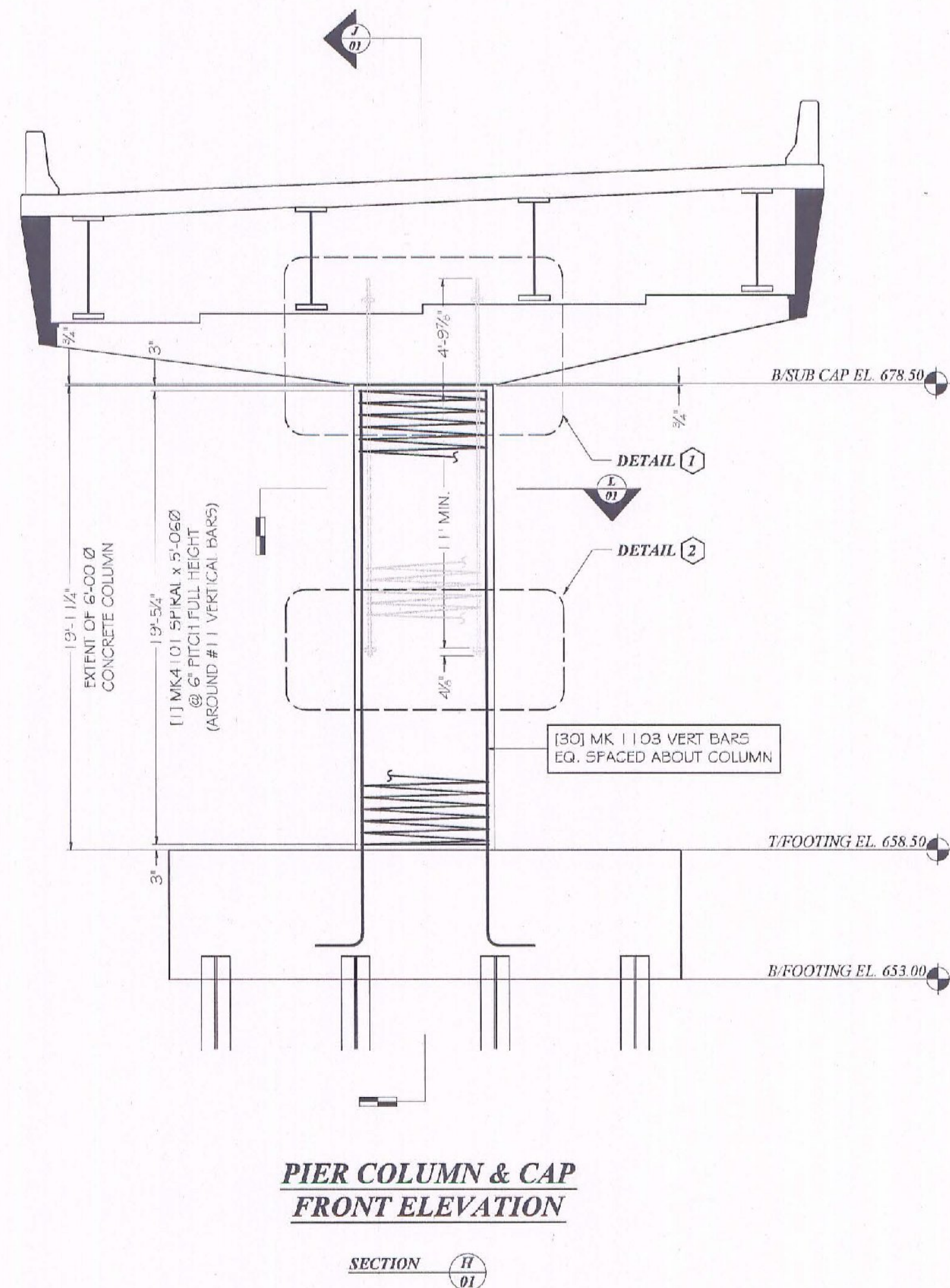
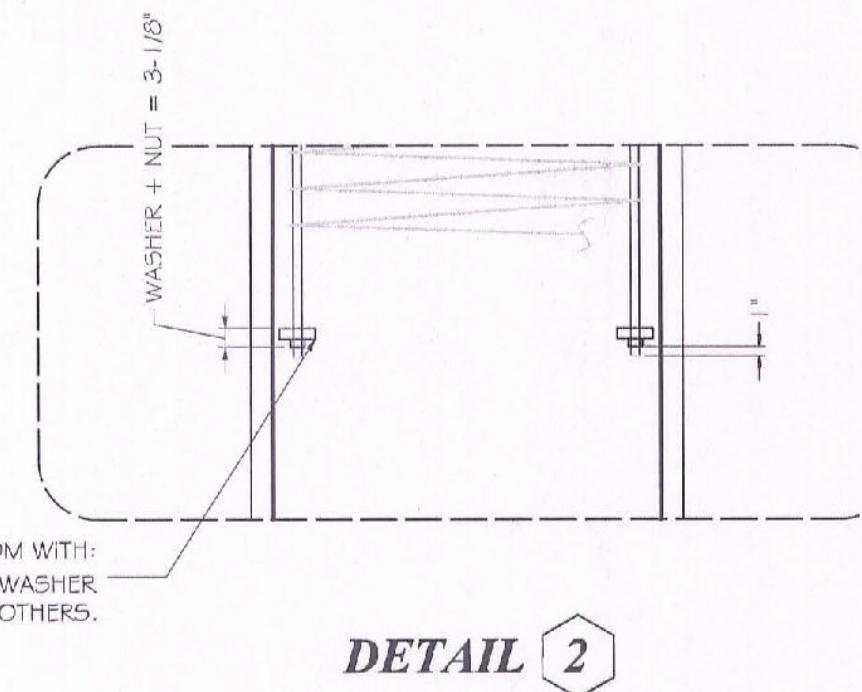
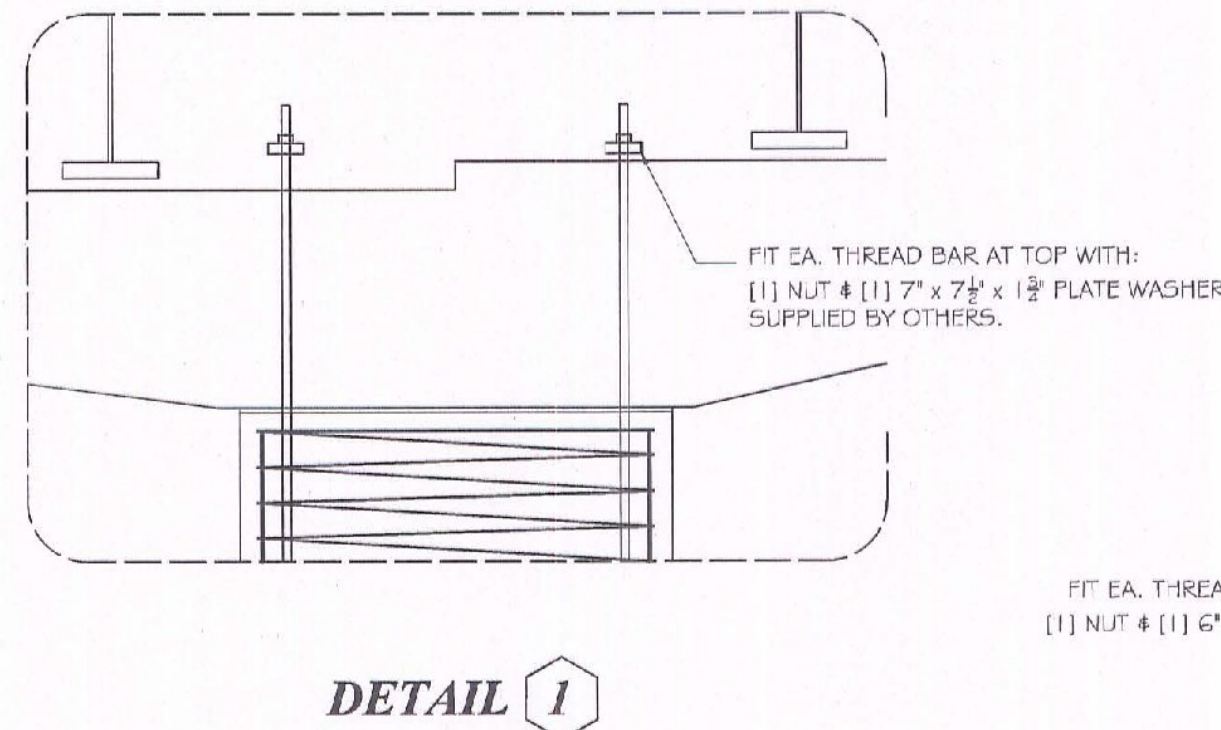


PIER COLUMN REINFORCING SCHEDULE															
VERT # SPI REINFORCING					BENDING DIMENSIONS								ACCESSORIES		
QTY	MARK	SIZE	TYPE	WEIGHT	A	B	C	D	E	J	G	K	O	QUANTITY	SIZE
30	1103	#11	17	4104		2'-0"	23'-9"							12	PL 1 1/2" x 7" x 7 1/2"
12		1 1/2"	THD	1030	16'-02									12	PL 1 1/2" x 6" x 6"
1	4101	#4	SPI	738	19'-5"	5'-6"	0'-6"	1	1	41				24	NUTS FOR THD. BAR
1	4102	#4	SPI	384	11'-0"	4'-10"	0'-6"	1	1	24					
				6257											ACCESSORY WEIGHT ###



Vermont Agency of Transportation
RECEIVED
 CK'D BY VHB OK'D BY JTS
 May 10, 2013
 RESUBMIT NO Approved
 BY KMH DATE 05/15/13

SHOP DRAWING REVIEW

REVIEWED AS REQUIRED BY THE CONSTRUCTION CONTRACT DOCUMENTS AND APPROVED, BUT ONLY FOR COMPLIANCE TO THE DESIGN CONCEPT OF THE WORK, AND SUBJECT TO FURTHER LIMITATIONS AND REQUIREMENTS CONTAINED IN THE CONSTRUCTION CONTRACT DOCUMENTS.

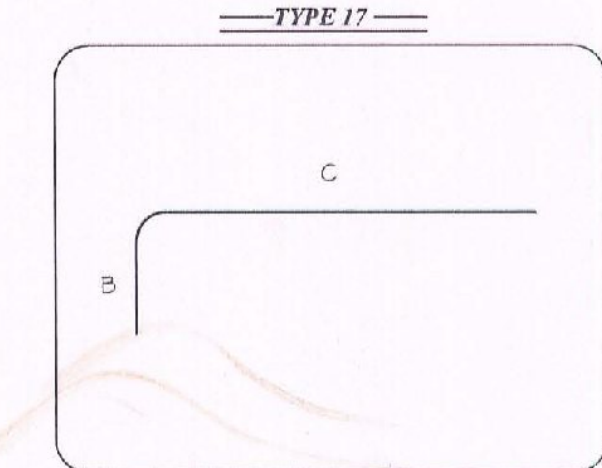
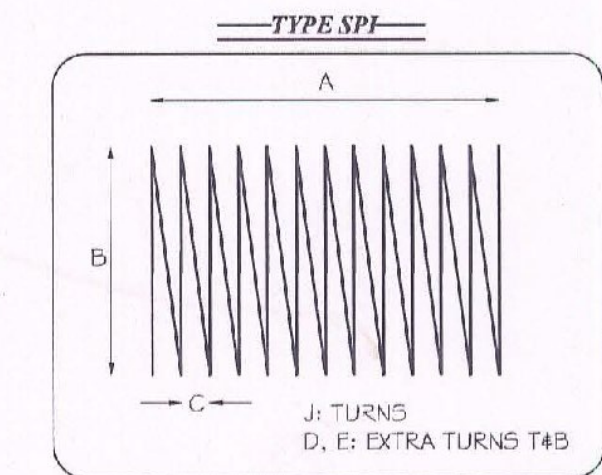
REJECTED REVISE AND RESUBMIT FORNUL AS CORRECTED

CORRECTIONS OR COMMENTS MADE ON THE SHOP DRAWINGS DURING THIS REVIEW DO NOT RELIEVE CONTRACTOR FROM COMPLIANCE WITH REQUIREMENTS OF THE DRAWINGS AND SPECIFICATIONS. THIS CHECK IS ONLY FOR REVIEW OF GENERAL COMPLIANCE WITH THE DESIGN CONCEPT OF THE PROJECT AND GENERAL COMPLIANCE WITH THE INFORMATION GIVEN IN THE CONTRACT DOCUMENTS. THE CONTRACTOR IS RESPONSIBLE FOR CORRECTING AND CORRELATING ALL QUANTITIES AND DIMENSIONS, SELECTING FABRICATION PROCESSES AND TECHNIQUES OF CONSTRUCTION, COORDINATING HIS WORK WITH THAT OF ALL OTHER TRADES AND PERFORMING HIS WORK IN A SAFE AND SATISFACTORY MANNER.

VHB Vanasse Hangen Brustlin, Inc.
 Job Number: 52550.00
 Reviewed By: G.P. Gombosi
 Date: 5-14-2013

GENERAL NOTES

- ALL REBAR INCLUDED ON THIS DRAWING SHALL BE OF ASTM A615 GRADE 60 REBAR.
- INTERSECTIONS OF SPIRAL BARS AND VERTICAL BARS SHALL BE DOUBLE-WIRE TIED.
- SPIRAL BARS SHALL BE SPLICED USING AN OVER LAP SPLICE OF 4 TIMES MINIMUM.
- SPIRALS SHALL BE TERMINATED AT TOP AND BOTTOM OF REBAR CAGE BY 1 1/2 EXTRA TURNS AT 0' PITCH.
- PICK WEIGHT SHOWN INCLUDES ALL REBAR, MECHANICAL COUPLERS, CS. PIPES, TIE WIRE, CS. PIPE CLAMP-TYPE POSITIONERS AND CAGE BRACING SYSTEM ELEMENTS.
- ELEVATIONS SHOWN ARE FOR INFORMATION ONLY AND SHALL NOT BE USED FOR CONSTRUCTION.



No.	Revision/Issue	Date
1	Rev. per Reviewer Comments	04/25/13

DIMENSION
 DIMENSION FABRICATORS, INC.
 2000 SEVENTH STREET
 SCOTIA, NY 12302
 www.dimensionfab.com

Project Name and Address
 T. Buck Construction
 VT AOT Jamaica ER BRF 013 - 1(16)
 Jamaica, VT
 Pier Column Reinforcing with Threadbar Extensions
 State of Vermont AOT
 Reference Drawings: Sheet 38, 39, 40
 Vanasse, Hangen Brustlin, Inc.

Project	8421	Sheet	
Date	04.25.13		P-R01
Scale	NA		