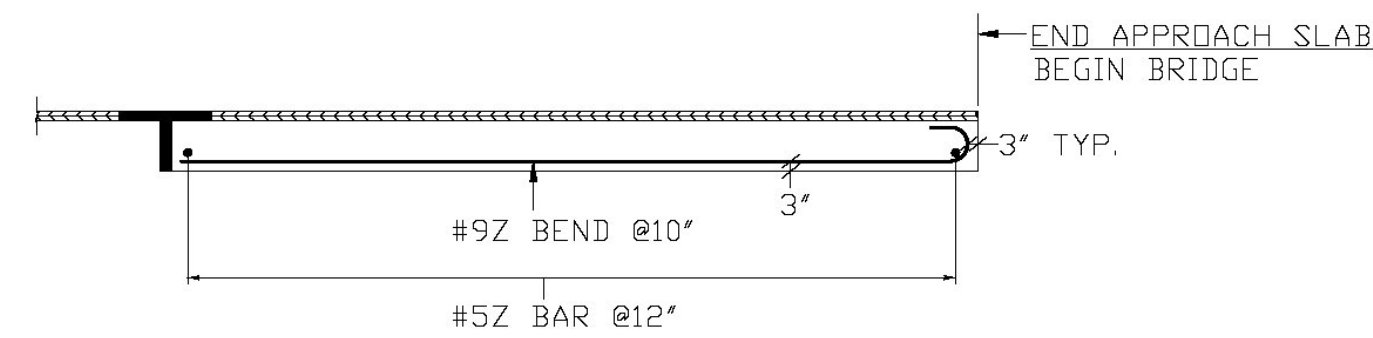
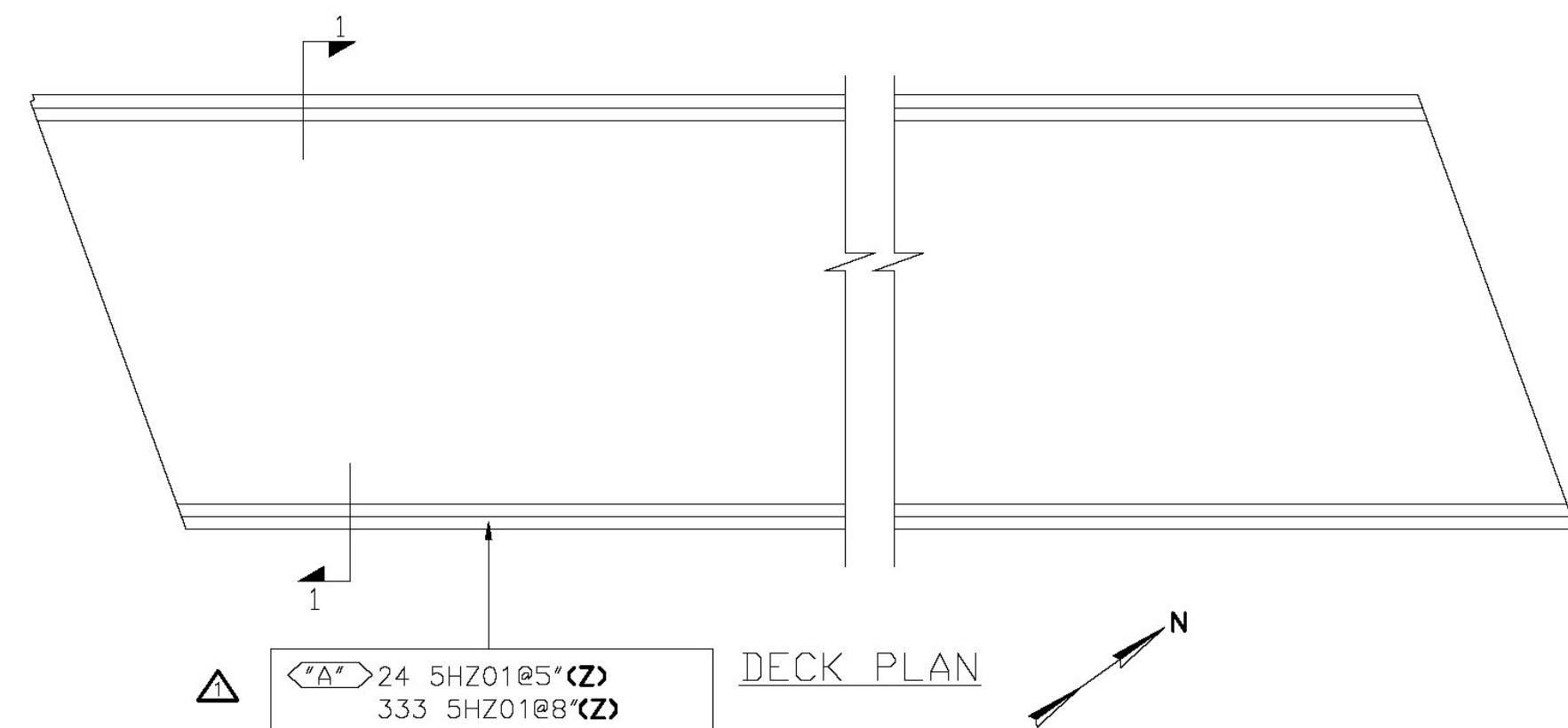


APPROACH SLAB #1 PLAN

APPROACH SLAB #2 PLAN



SECT. A-A
APPROACH SLAB ELEV.

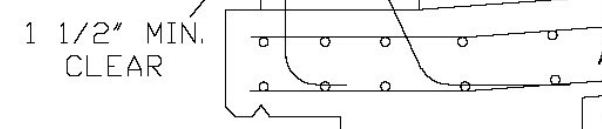


DECK PLAN

- <A> 24 5HZ01@5' (Z)
- 333 5HZ01@8' (Z)
- 24 5HZ01@5' (Z)
- 4x6 #8 X 40'-0" (Z)
- +4x1 #8 X 31'-2" (Z)
- <C> 4x6 #7 X 40'-0" (Z)
- +4x1 #7 X 24'-2" (Z)
- X2 SIDES

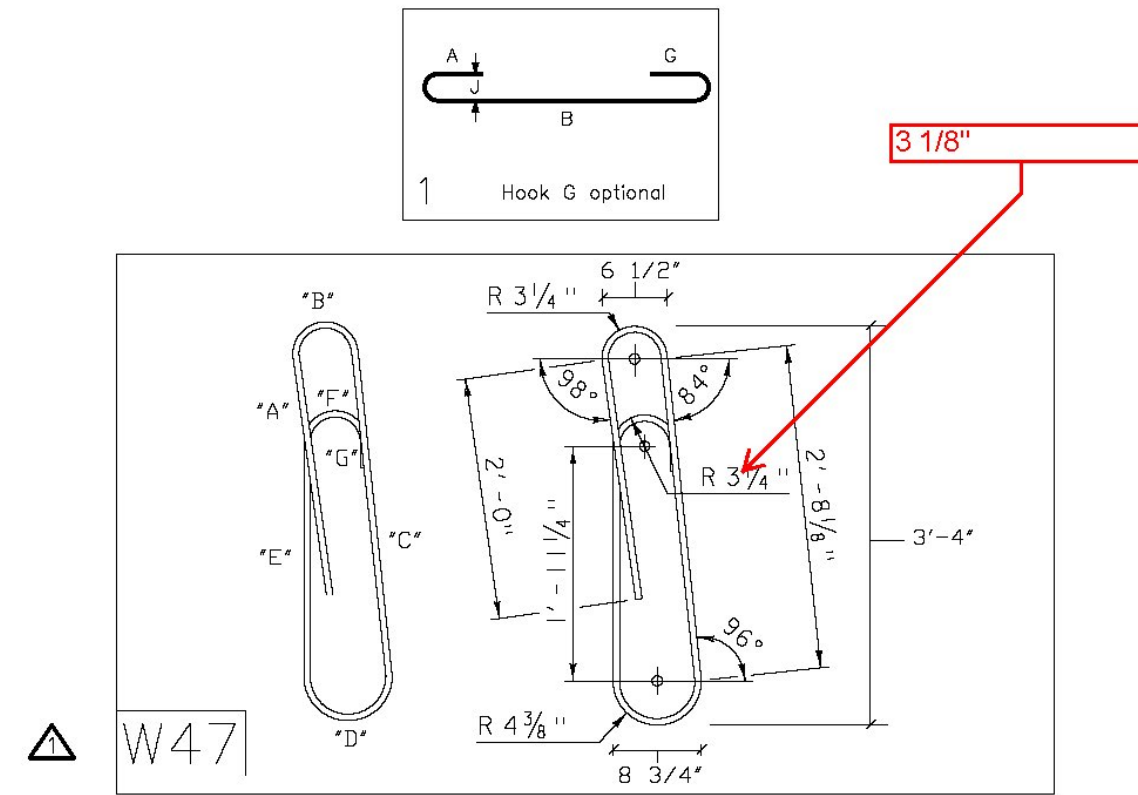
C 4 - #7Z CNT.

B 4 - #8Z CNT.
A #5HZ01
MATCH SPACING TO SFZ02



SECT. 1
BRIDGE RAILING REINF.
FLD. ADJ. AS REQ.

Release Number: 018										BAR LIST									
Bar Mark	Qty	Size	Total Length	Type	'A'	'B'	'C'	'D'	'E'	'F'	'G'	'H'	'J'	'K'	'O'	'R'			
9HZ01	36	#9	20'-8 1/2"	1	1'-3"	19'-5 1/2"									0'-11 3/4"				
Release Number: 019										BAR LIST									
9HZ01	36	#9	20'-8 1/2"	1	1'-3"	19'-5 1/2"									0'-11 3/4"				
Release Number: 020										BAR LIST									
5HZ01	762	#5	9'-8"	W47	2'-0"	0'-10"	2'-8"	1'-2"	1'-11"	9 3/4"	2 1/2"								



△ LAP CHART

BAR SIZE	LAP
#7	3'-10"
#8	5'-0"

ALL BAR ON THIS DWG.
IS DUAL COATED

-ELEVATIONS & DIMENSIONS SHOWN ON THIS DWG. ARE FOR REINF. DETAILING PURPOSES ONLY AND ARE NOT INTENDED FOR CONSTRUCTION.
-DUAL COATED BAR - ASTM A1055M (Z BAR)
-DUAL COATED BAR DENOTED (Z)

FOR FIELD USE

Vermont Agency of Transportation
RECEIVED
CK'D BY RKJG OK'D BY JS
July 3, 2013
RESUBMIT NO Approved AsNoted
BY KH DATE 7-15-2013

6			
5			
4			
3			
2	05/10/13	△ REV'D/ENG. COMM./FOR RECORD & JOB USE	
1	04/26/13	0 APPROVAL	
	DATE	REV.#	SENT FOR
STRUCTURE	VTAOT JAMAICA ER BRF 013-1(16)		
LOCATION	RTE 1005 JAMAICA, VT		
ARCHITECT			
ENGINEER			
CUSTOMER	T. BUCK CONSTRUCTION		
DRAWN BY	DATE	DT #	
WAYNE	04/23/13	8421	
DRAWING COVERS			DRAWING #
APPROACH SLABS AND BRIDGE RAILING REINF.			H