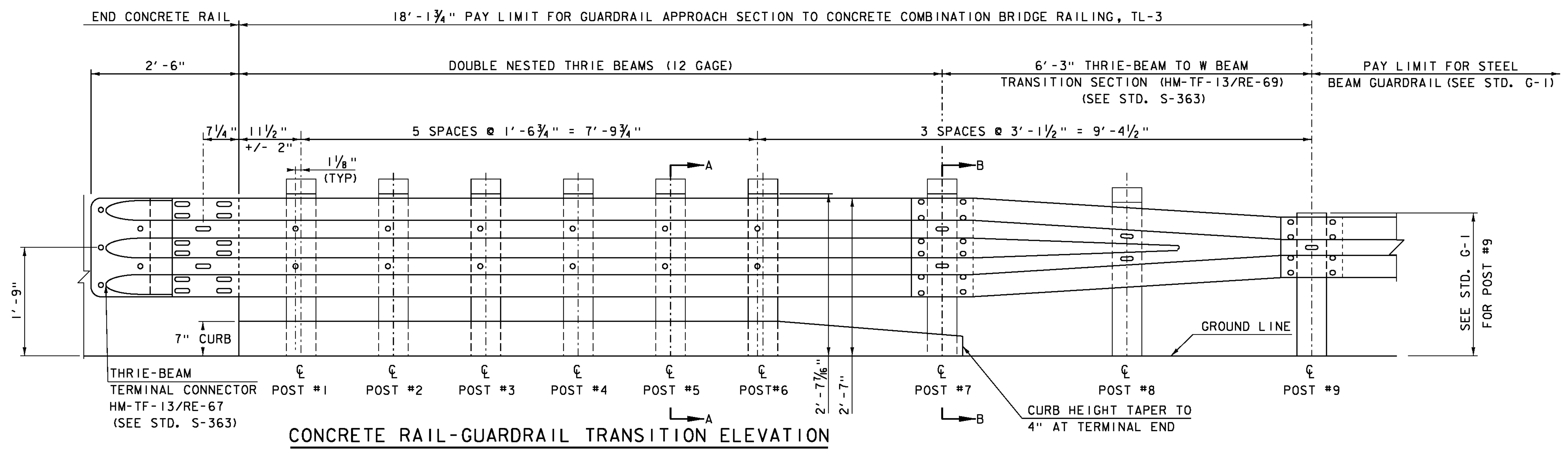
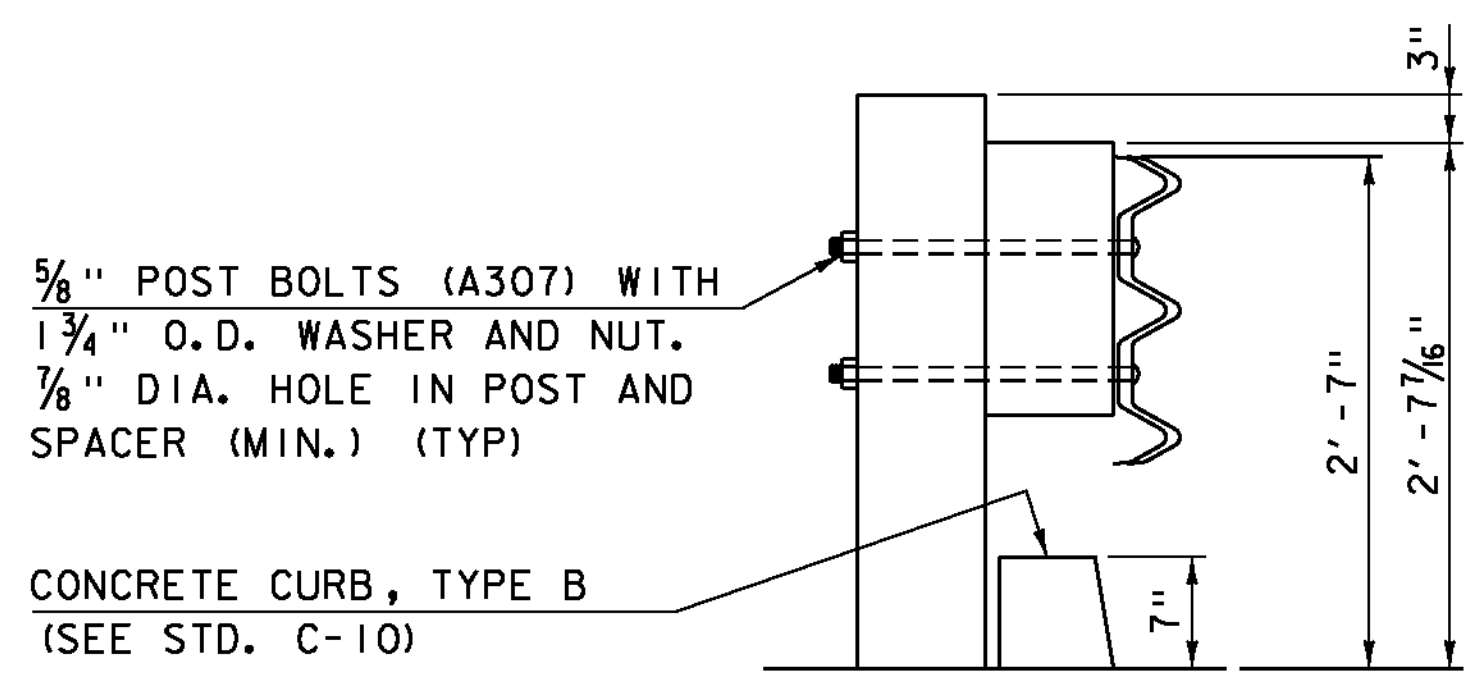


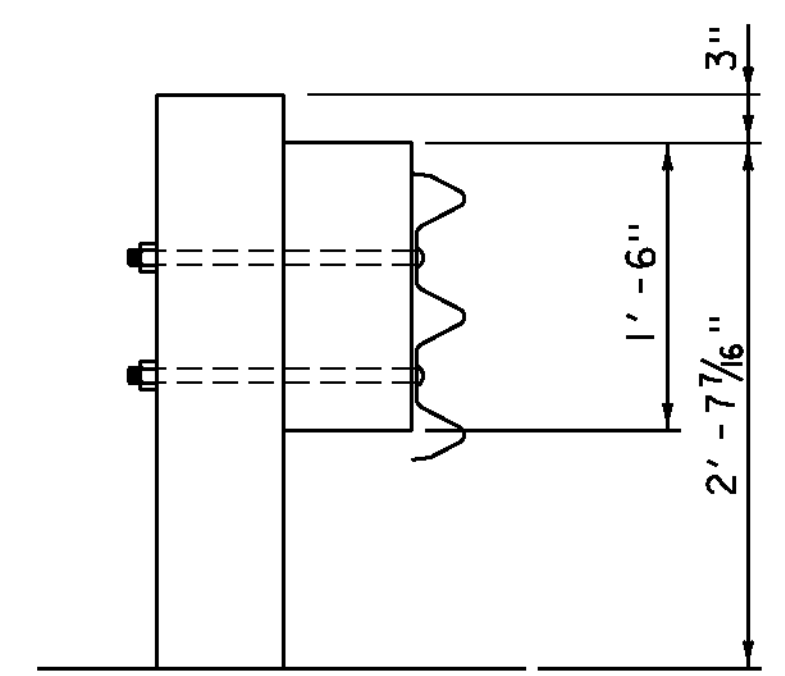
**CONCRETE RAIL-GUARDRAIL TRANSITION PLAN**



**CONCRETE RAIL-GUARDRAIL TRANSITION ELEVATION**



**SECTION A-A**



**SECTION B-B**

	STEEL	WOOD
SECTION	W6x9	6"x8"
OFFSET BLOCK	6"x8" WOOD	6"x8" RECESSED WOOD
EMBEDMENT DEPTH	POST# 1-6	7'-0"
	POST# 7&8	6'-0"
	POST# 9	SEE STD. G-1

**POST TABLE**

**NOTES:**

1. THRIE-BEAM TERMINAL CONNECTOR SHALL BE INCLUDED IN THE UNIT BID PRICE FOR GUARDRAIL APPROACH SECTION TO CONCRETE COMBINATION BRIDGE RAILING, TL-3.
2. UNLESS OTHERWISE DIRECTED BY THE ENGINEER, A COMPOSITE MATERIAL POST AND/OR BLOCKOUT FROM THE APPROVED PRODUCTS LIST MAY BE SUBSTITUTED FOR A POST AND/OR BLOCKOUT OF SIMILAR DIMENSIONS.
3. THIS RAILING MEETS THE REQUIREMENTS FOR A NCHRP REPORT 350 TL-3 SERVICE LEVEL.

PROJECT NAME:	JAMAICA	PLOT DATE:	12-OCT-2012
PROJECT NUMBER:	ER-BRF 013-1(16)	DRAWN BY:	VTRANS
FILE NAME:	s11b212rail.dgn	CHECKED BY:	J. SALVATORI
PROJECT LEADER:	K. HIGGINS	SHEET	23 OF 85
DESIGNED BY:	VTRANS	TL-3 TRANSITION RAIL DETAILS	