

GPS CONTROL POINTS

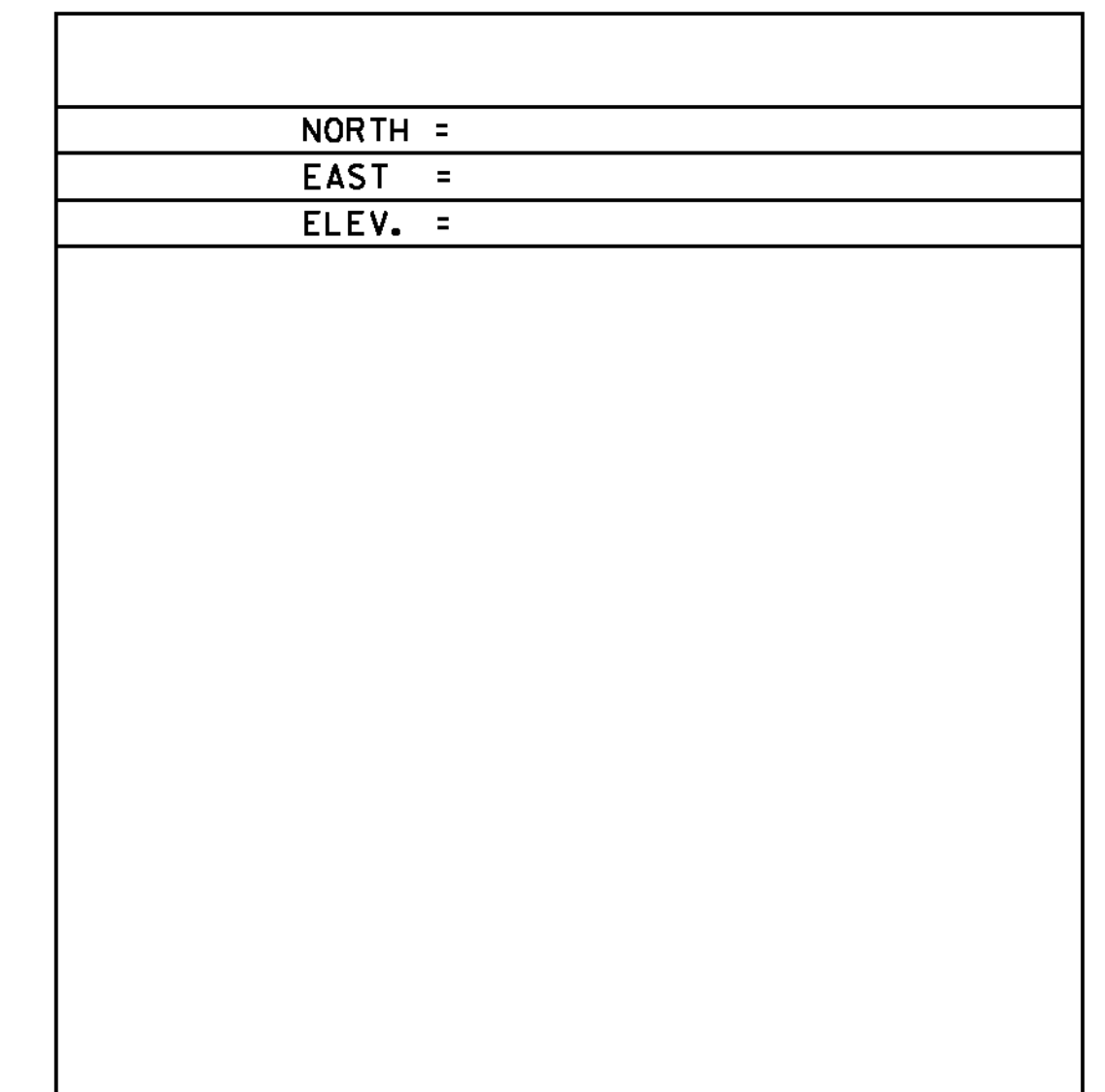
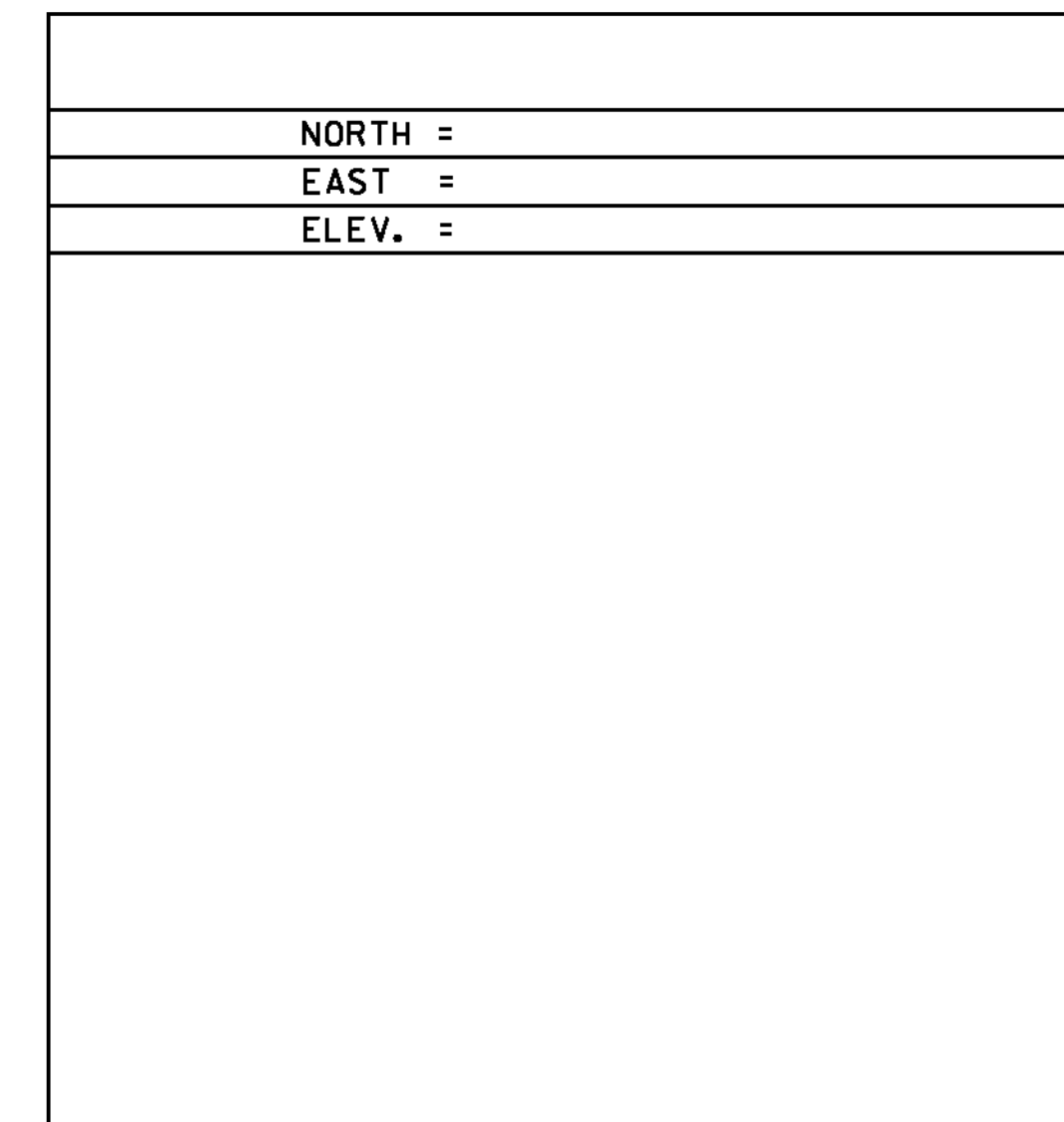
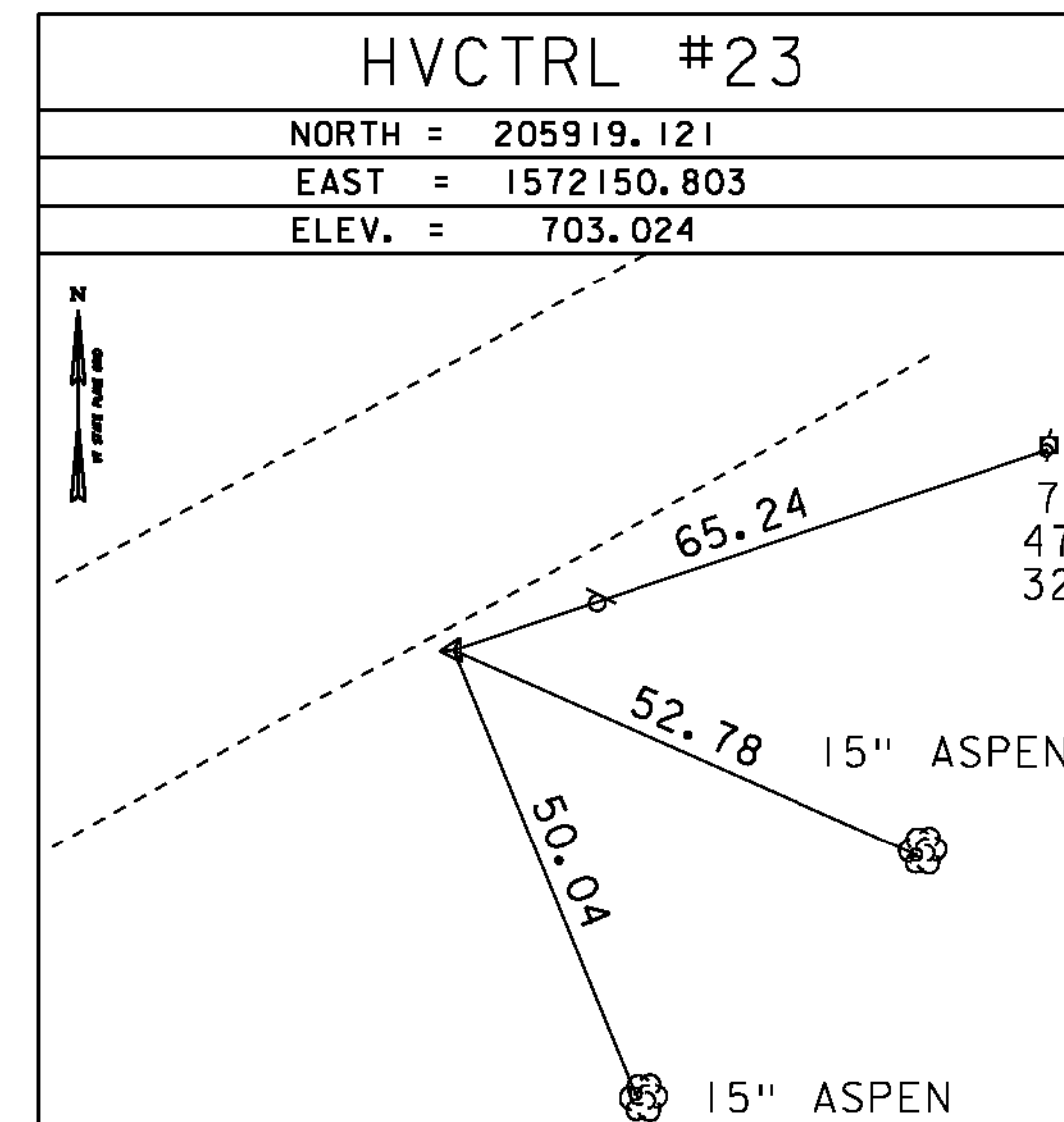
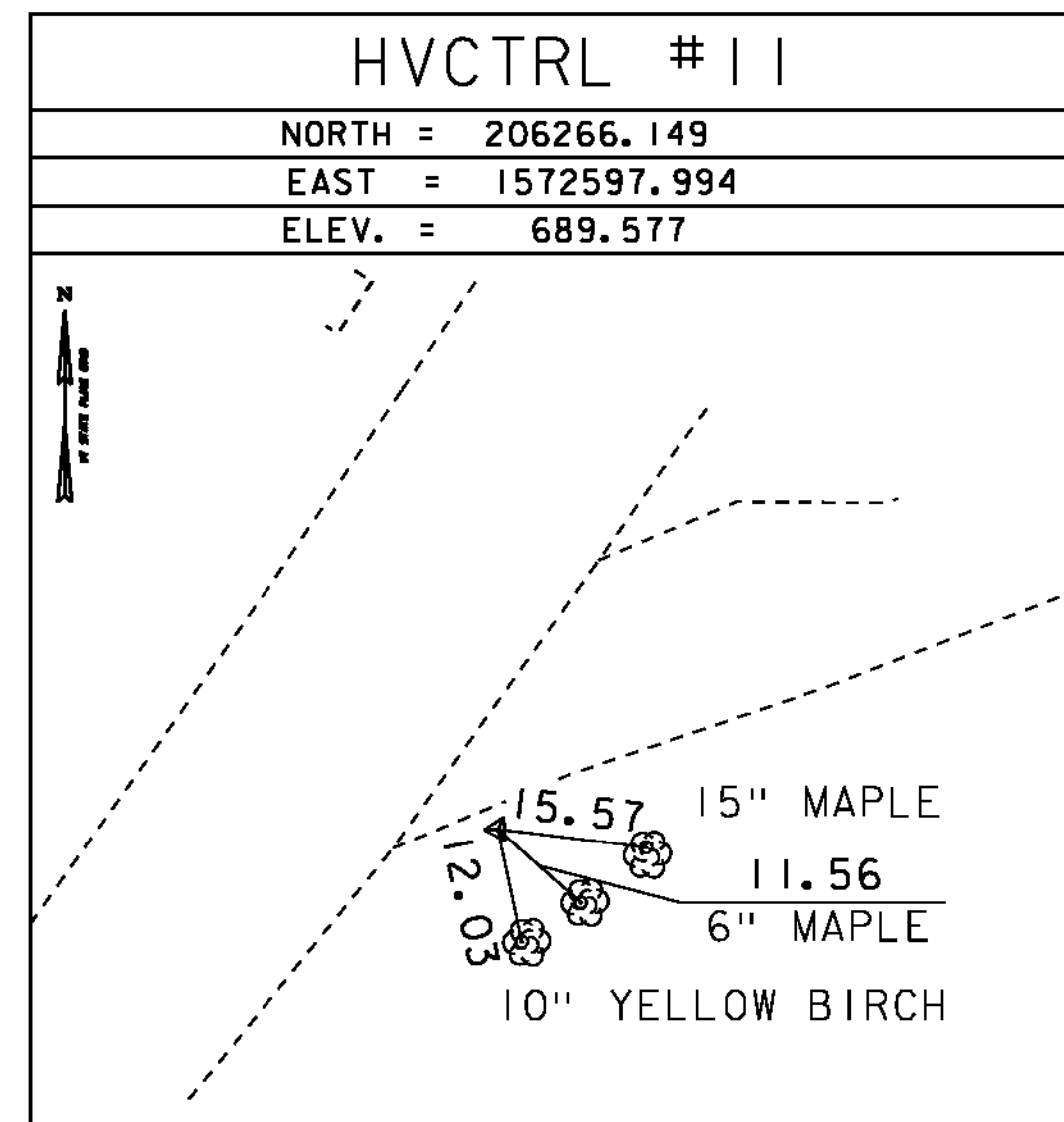
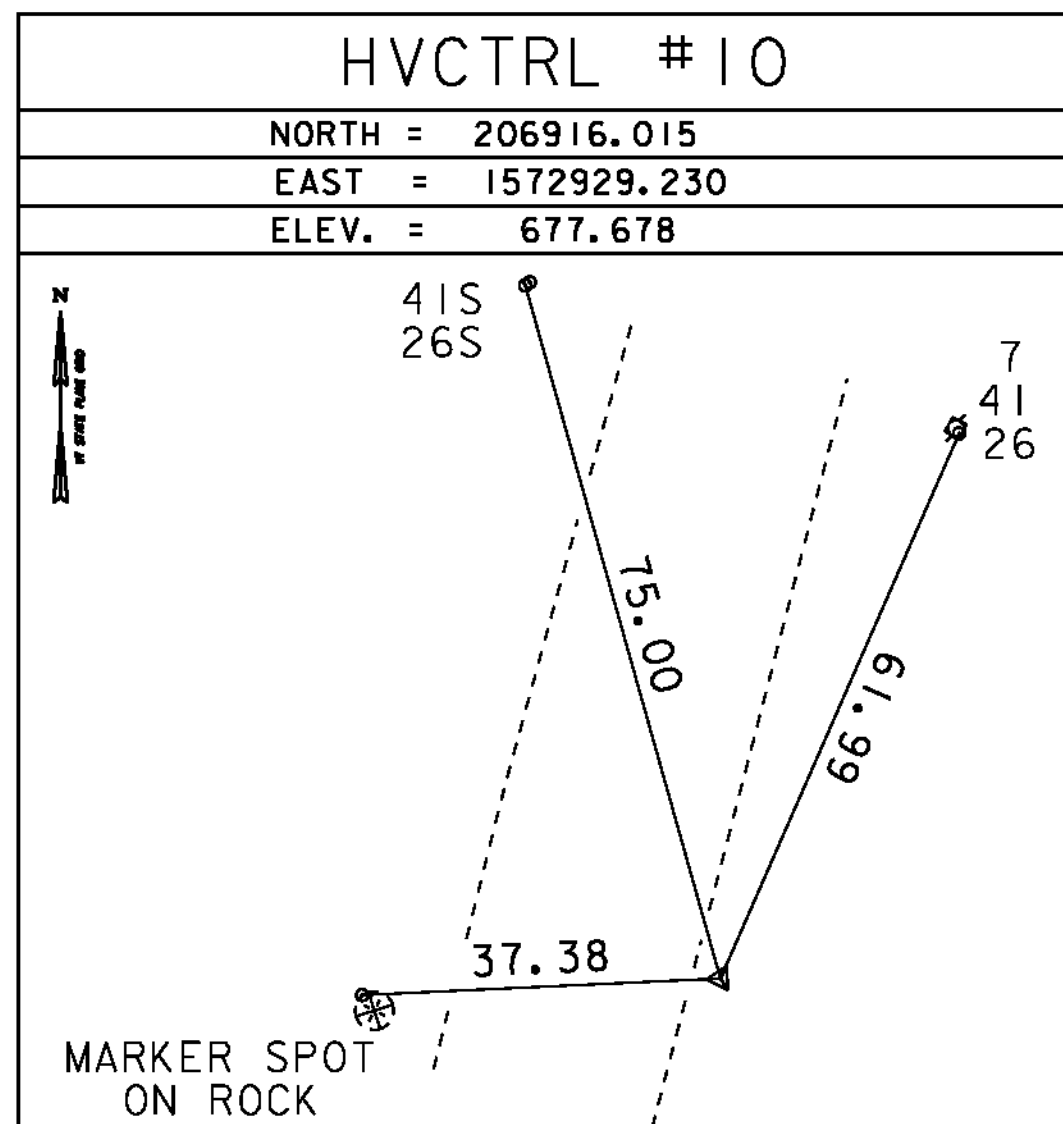
HVCTRL #1  
 T 127 AZ MK  
 NORTH = 209820.660  
 EAST = 1578913.510

GENERAL LOCATION, JAMAICA, VT. TO REACH FROM THE MOST SOUTHERLY INTERSECTION OF VT ROUTES 100 AND 30 IN EAST JAMAICA GO EAST ALONG VT ROUTE 30 FOR 0.2 MI (0.3 KM) TO THE MARK ON THE RIGHT OPPOSITE A LEDGE CUT. THE MARK IS SET IN THE TOP OF A FENO TYPE MONUMENT FLUSH WITH GROUND SURFACE. IT IS 1.9 M (6.2 FT) SOUTH OF AND ABOUT LEVEL WITH THE SOUTH EDGE OF PAVEMENT OF VT ROUTE 30, 5.0 M (16.4 FT) WEST NORTHWEST OF POLE NO.594/514, 21.0 M (68.9 FT) NORTHWEST OF A 60 CM PINE, AND 0.3 NORTH OF A FIBERGLASS WITNESS POST

HVCTRL #2  
 T 127  
 NORTH = 209918.560  
 EAST = 1577682.960  
 ELEV. = 553.800

GENERAL LOCATION, JAMAICA, VT. TO REACH FROM THE MOST SOUTHERLY INTERSECTION OF VT ROUTES 100 AND 30 IN EAST JAMAICA GO WEST ALONG VT ROUTE 100 AND 30 FOR ABOUT 65 M (213.3 FT) TO THE INTERSECTION OF A GRAVEL ROAD RIGHT AND THE MARK ON THE RIGHT IN THE SOUTHWEST CORNER OF THE STEPHEN BALLANTINE MEMORIAL ATHLETIC FIELD COMPLEX. THE MARK IS SET FLUSH WITH GROUND SURFACE IN THE TOP OF A CAST ALUMINUM MONUMENT. IT IS 10.7 M (35.1 FT) NORTH OF AND ABOUT 2 M (6.6 FT) LOWER THAN THE NORTH EDGE OF PAVEMENT OF VT ROUTE 100 AND 30, 9.5 M (31.2 FT) EAST OF THE CENTERLINE OF THE GRAVEL ROAD, 18.2 M (59.7 FT) NORTHWEST OF POLE NO. 599/5/505, AND 0.1 SOUTH OF A FIBERGLASS WITNESS POST.

TRAVERSE TIES



\* MAIN TRAVERSE COMPLETED 10/25/2011 BY R. GILMAN P. C. & P. WINTERS

ALIGNMENT TIES

Horizontal Alignment Name: VT 100 Prop  
 Description: Mainline

STATION	NORTHING	EASTING
POB (1287)	112+65.55	205903.80
PC (1288)	114+76.80	206005.84
Tangent Direction: N 61°07'00" E		
Tangent Length: 211.25		
Element: Circular		
PC (1288)	114+76.80	206005.84
PI ( )	116+87.93	206107.82
CC (1289)	118+91.55	206793.88
PT (1290)	118+91.55	206281.36
Radius: 900.00		
Delta: 26°24'13" Left		
Degree of Curvature (Arc): 6°21'58"		
Length: 414.75		
Tangent: 211.12		
Chord: 411.09		
Middle Ordinate: 23.79		
External: 24.43		
Tangent Direction: N 61°07'00" E		
Radial Direction: S 28°53'00" E		
Chord Direction: N 47°54'54" E		
Radial Direction: S 55°17'13" E		
Tangent Direction: N 34°42'47" E		
Element: Linear		
PT (1290)	118+91.55	206281.36
PC (1291)	122+03.82	206538.05
Tangent Direction: N 34°42'47" E		
Tangent Length: 312.27		
Element: Circular		
PC (1291)	122+03.82	206538.05
PI ( )	123+47.40	206656.08
CC (1292)	124+88.14	207007.86
PT (1293)	124+88.14	206794.80
Radius: 825.00		
Delta: 19°44'47" Left		

STATION	NORTHING	EASTING
Degree of Curvature (Arc): 6°56'42"		
Length: 284.33		
Tangent: 143.59		
Chord: 282.92		
Middle Ordinate: 12.22		
External: 12.40		
Tangent Direction: N 34°42'47" E		
Radial Direction: S 55°17'13" E		
Chord Direction: N 24°50'24" E		
Radial Direction: S 75°02'00" E		
Tangent Direction: N 14°58'00" E		
Element: Linear		
PT (1293)	124+88.14	206794.80
POE (1294)	126+59.72	206960.55
Tangent Direction: N 14°58'00" E		
Tangent Length: 171.57		
Element: Linear		
POB (1016)	50+00.00	206368.66
POE (1014)	55+00.00	206495.65
Tangent Direction: N 75°17'13" W		
Tangent Length: 500.00		

DATUM	
VERTICAL	NAVD 88
HORIZONTAL	NAD 83 (92)
ADJUSTMENT	COMPASS

PROJECT NAME:	JAMAICA
PROJECT NUMBER:	ER-BRF 013-1(16)
FILE NAME:	survey\11b212+1.dgn
PROJECT LEADER:	K.HIGGINS
DESIGNED BY:	J. SALVATORI
TIE SHEET	
PLOT DATE:	10-18-12
DRAWN BY:	S. DONOVAN
CHECKED BY:	J. SALVATORI
SHEET	10 OF 85