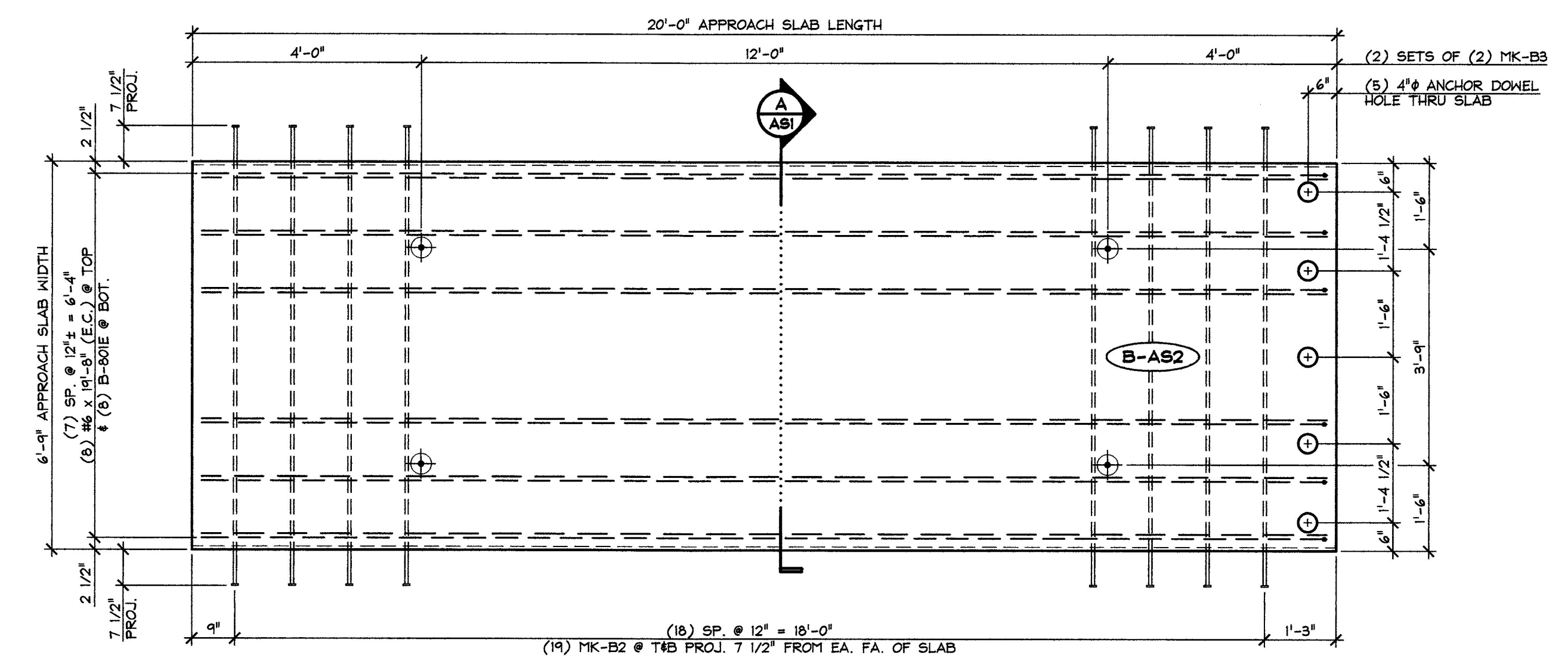
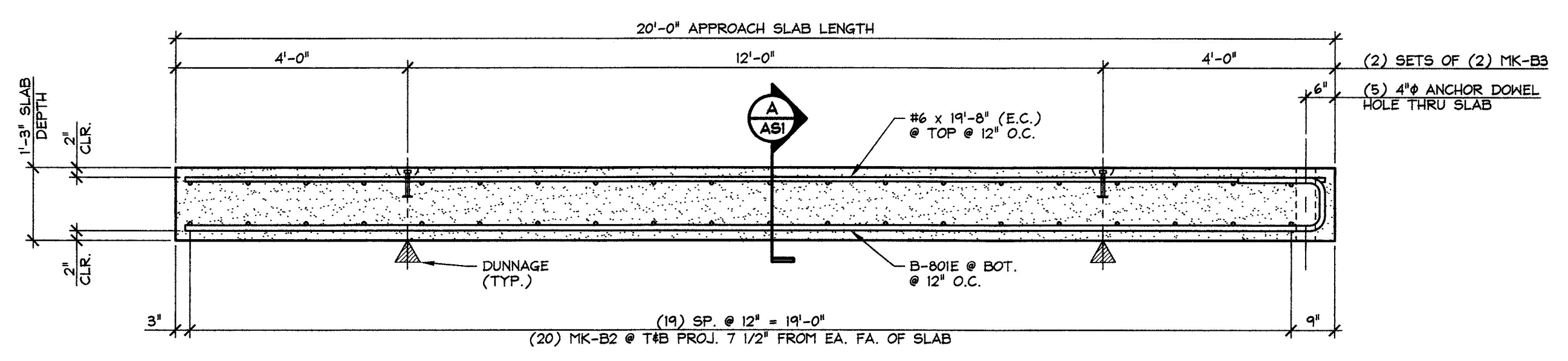


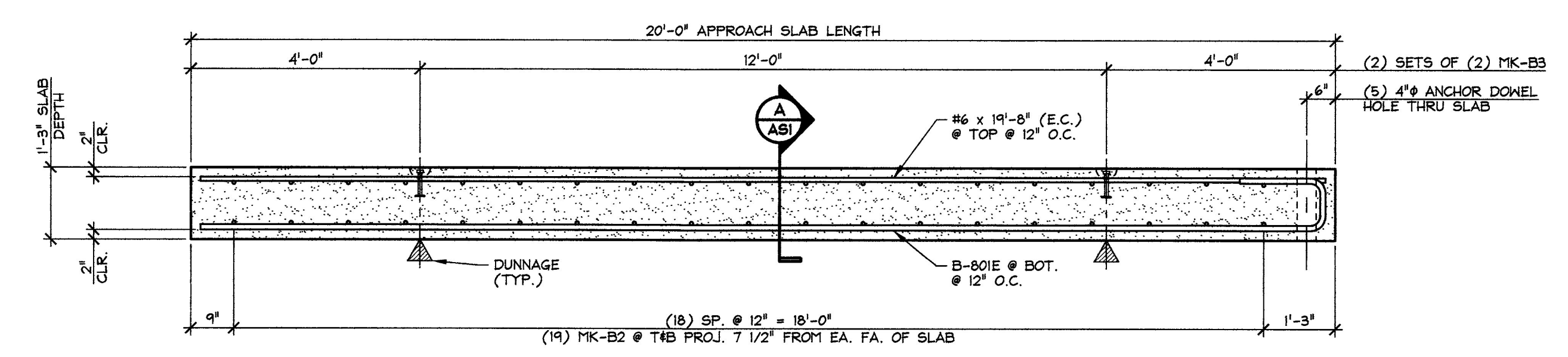
1 PLAN VIEW IN FORM  
ASI 1/2" = 1'-0"



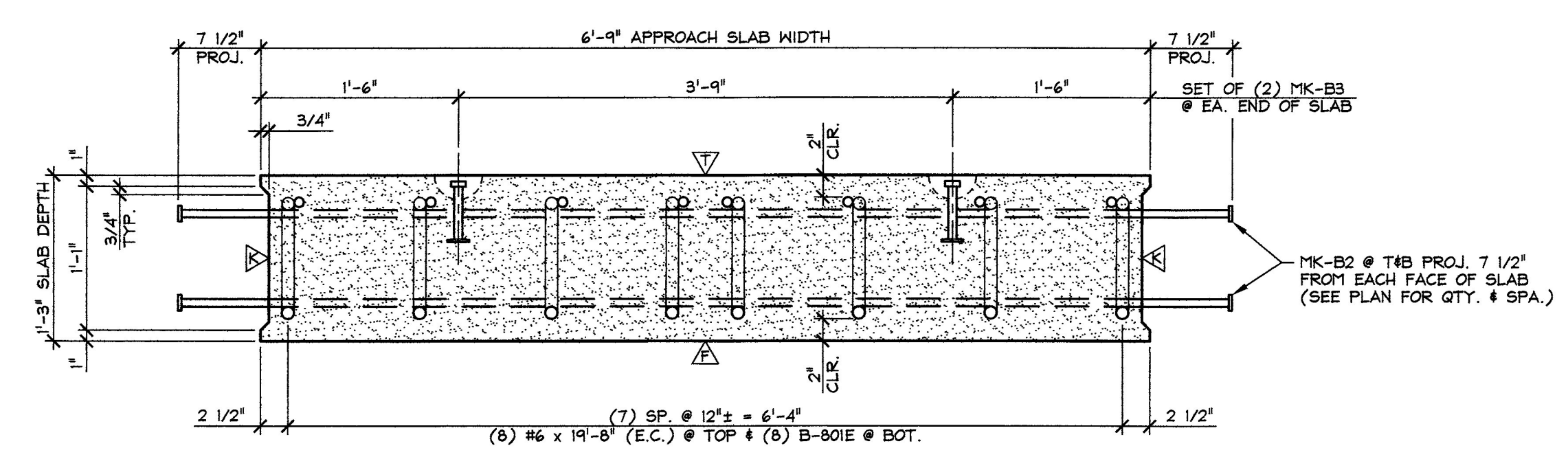
3 PLAN VIEW IN FORM  
ASI 1/2" = 1'-0"



2 ELEVATION  
ASI 1/2" = 1'-0"



4 ELEVATION  
ASI 1/2" = 1'-0"



A APPROACH SLAB SECTION  
ASI 1" = 1'-0"

▲ DENOTES FORM FINISH  
▲ DENOTES FLOAT FINISH  
▲ DENOTES BLAST FINISH

SUBMITTED  
JAN 9 2013  
J.P. CARRARA & SONS, INC.  
MIDDLEBURY, VT 05753

MARK: B-AS1	QTY.: 2	WT.: 12.46 T	VOL.: 6.16 cy
MARK: B-AS2	QTY.: 2	WT.: 12.46 T	VOL.: 6.16 cy

MATERIAL LIST / APPROACH SLAB				
ITEM	MARK	DESCRIPTION	QTY./SLAB	
			B-AS1	B-AS2
1		#6 x 19'-8" (EPOXY COATED)	8	8
2				
3	B-801E	#8 BENT BAR (EPOXY COATED)	8	8
4				
5				
6				
7	MK-B2	#5 x 8'-0" HRC 555 DOUBLE-HEADED REBAR (EPOXY COATED)	40	38
8	MK-B3	4T x 5 1/2" SWIFT LIFT LIFTER	4	4
9				
10				

Vermont Agency of Transportation  
**RECEIVED**  
CK'D BY WDL OK'D BY JTS  
January 9th, 2013  
RESUBMIT            APPROVED X  
BY KMH DATE 1-10-13

J.P. CARRARA & SONS INC.  
Precast & Prestress Manufacturer  
246A GAGE STR., MIDDLEBURY, VERMONT 05753 Phone:(802)388-6361 Fax:(802)388-9010

J.A. McDONALD, INC.  
CONTRACTOR  
LYNDON CENTER, VERMONT

STATE OF VERMONT AGENCY OF TRANSPORTATION  
COUNTY OF ESSEX  
DATE: OCT. 30, 2012  
SCALE: NOTED

TOWN OF BRIGHTON  
ROUTE NO. VT 105, MINOR ARTERIAL  
BRIDGE NO.: 84 PROJECT NO.: ER STP 034-3(25)  
CHKD: B.C. DFTM: B.L.  
JOB NO: 23984-012

PRECAST APPROACH SLAB DETAILS  
DWG. NO: ASI