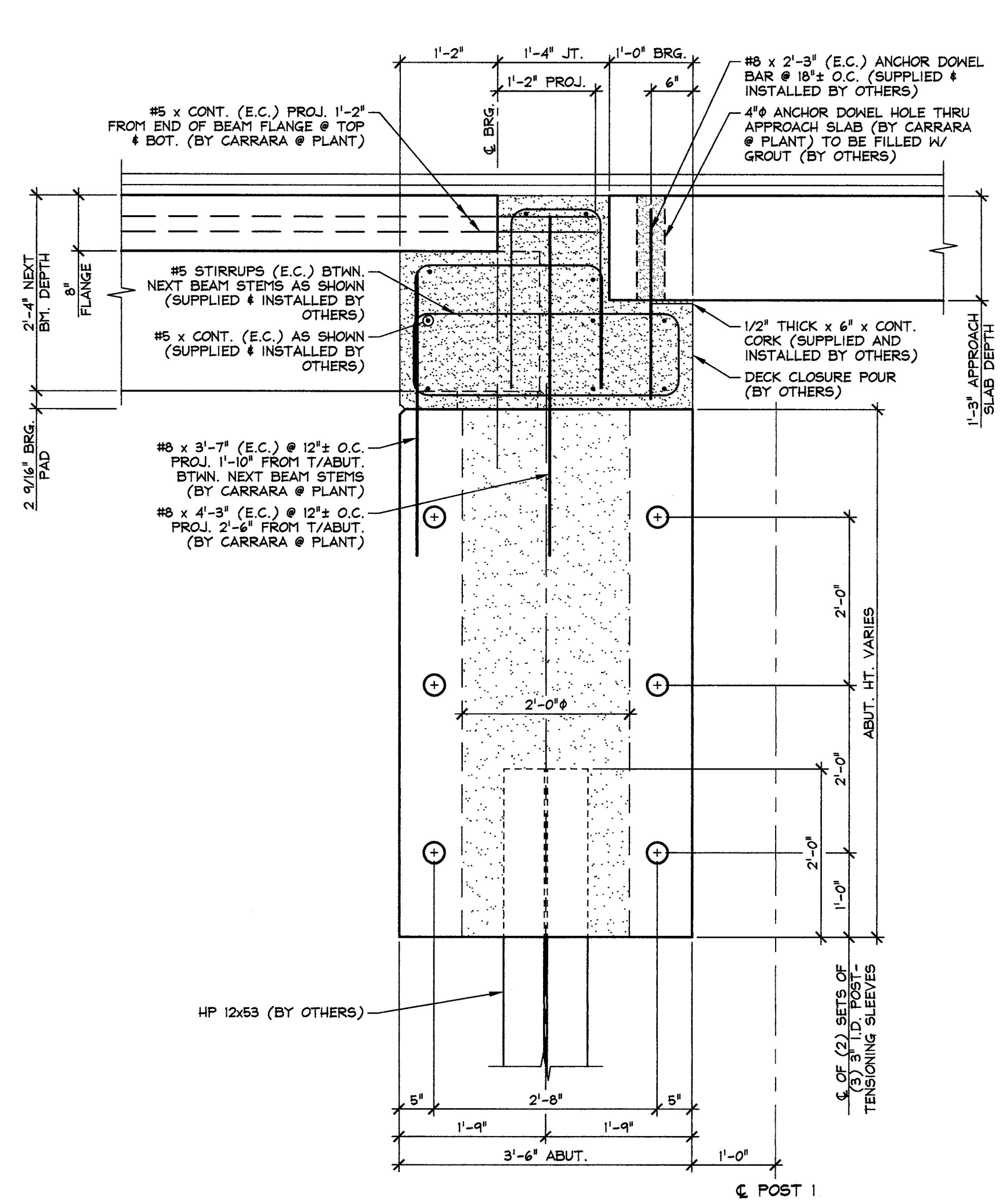
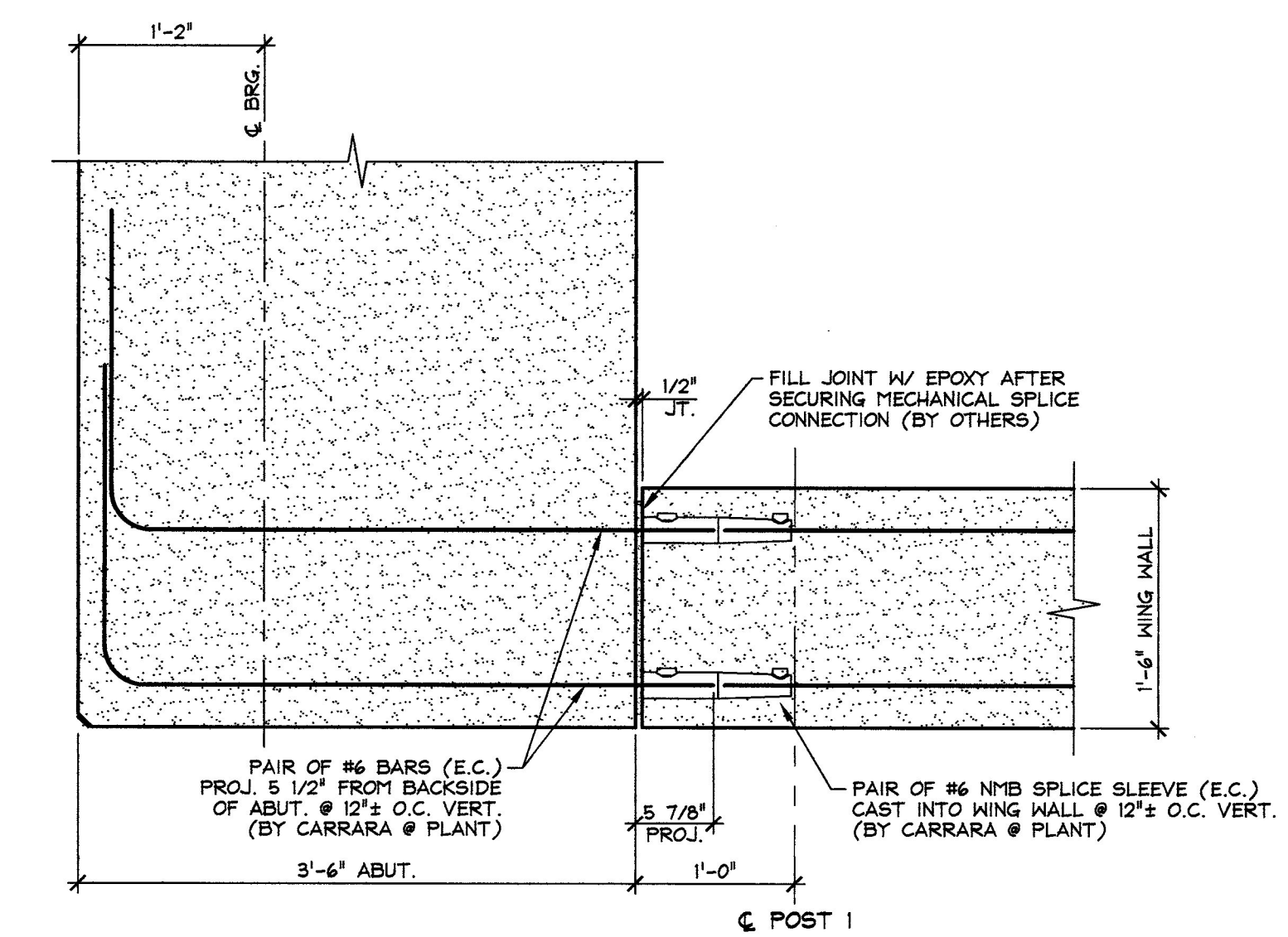


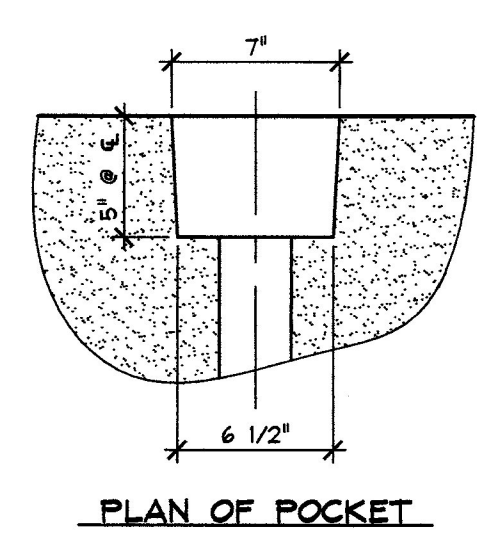
**A BEARING SECTION**  
**F3** NEXT BEAM STEM BEARING 3/4" = 1'-0"



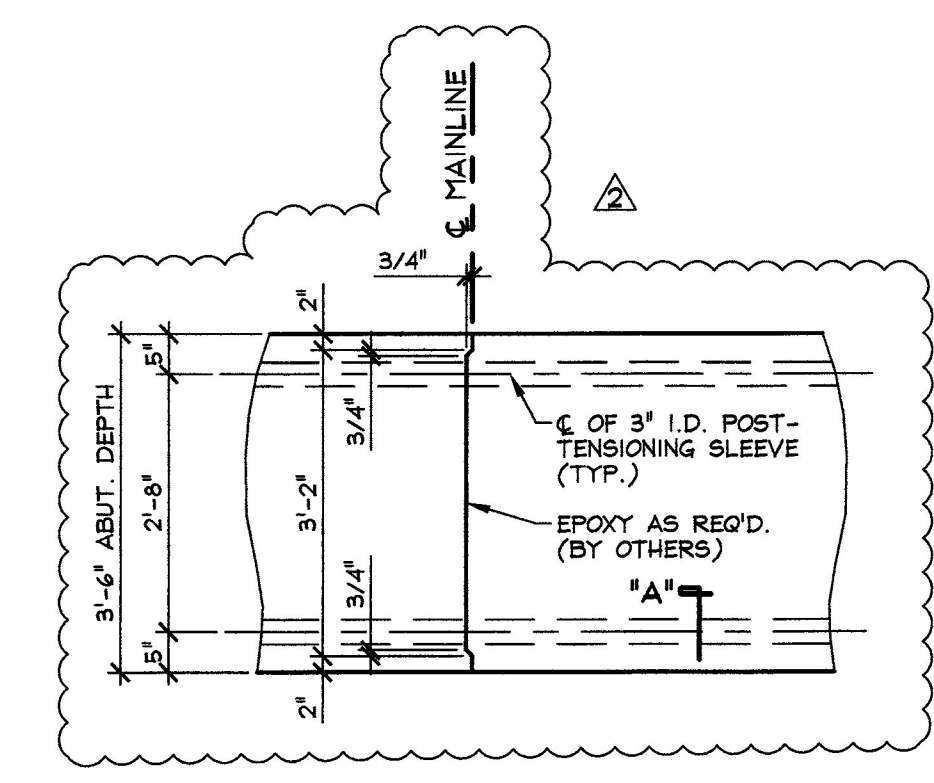
**A.1 BEARING SECTION**  
**F3** BETWEEN NEXT BEAM STEM BEARING 3/4" = 1'-0"



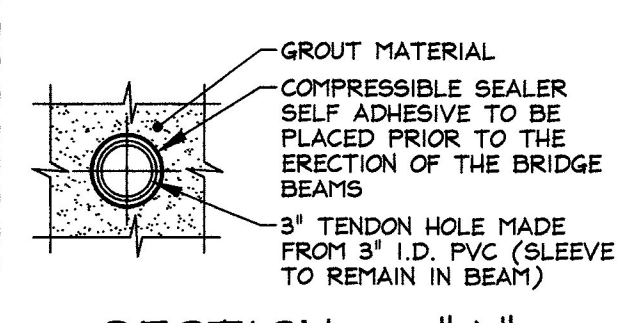
**B WING WALL CONNECTION DETAIL**  
**F3** 1" = 1'-0"



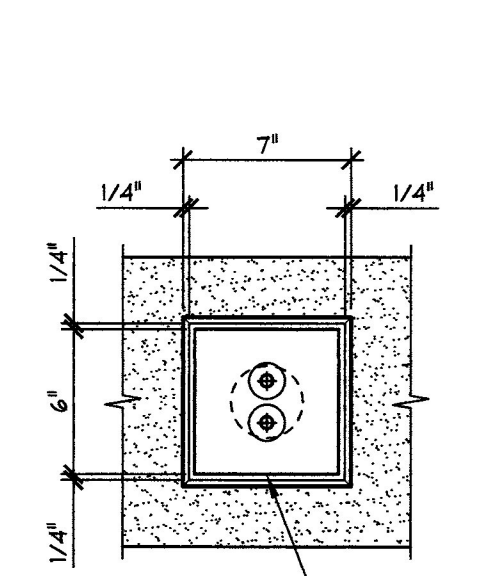
**PLAN OF POCKET**



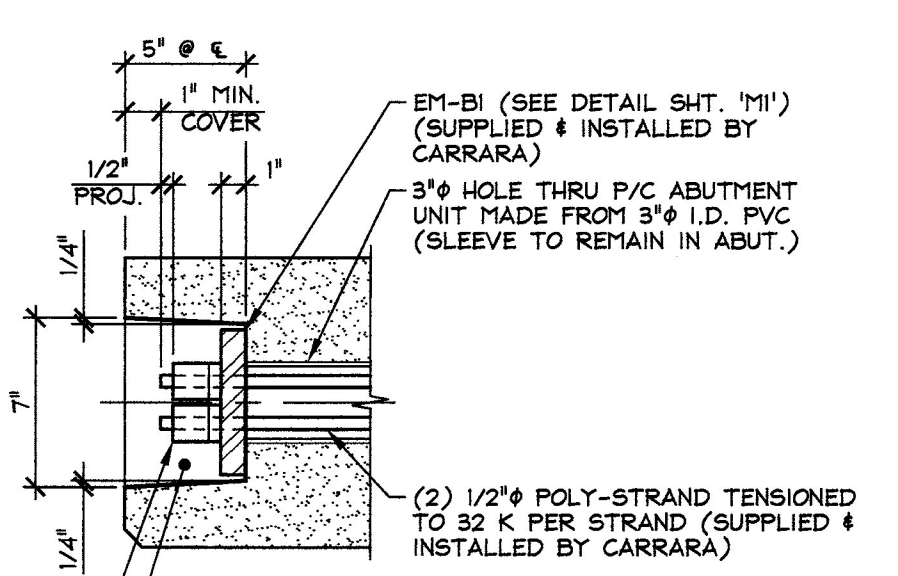
**C SHEAR KEY SECTION @ P.T. SLEEVE**  
**F3** 1/2" = 1'-0"



**SECTION - "A"**  
 1 1/2" = 1'-0"



**FASCIA ELEVATION**



**SECTION AT CENTERLINE**

Vermont Agency of Transportation  
**RECEIVED**  
 CK'D BY WDL OK'D BY JTS  
 January 9th, 2013  
 RESUBMIT BY KMH APPROVED DATE 1-10-13

SUBMITTED  
 JAN 9 2013  
 J. P. CARRARA & SONS, INC.  
 MIDDLEBURY, VT 05753

1-3-13 GENERAL REVISIONS

APPROVAL STAMP:	<b>J.P. CARRARA &amp; SONS INC.</b> Precast & Prestress Manufacturer 2464 CASE STR., MIDDLEBURY, VERMONT 05753 Phone:(802)388-6361 Fax:(802)388-9010	<b>J.A. McDONALD, INC.</b> CONTRACTOR LYNDON CENTER, VERMONT
STATE OF VERMONT AGENCY OF TRANSPORTATION COUNTY OF ESSEX		DATE: OCT. 30, 2012 SCALE: NOTED
TOWN OF BRIGHTON ROUTE NO. VT 105, MINOR ARTERIAL BRIDGE NO.: 84 PROJECT NO.: ER STP 034-3(25)		CHKD: B.C. DFTM: B.L. JOB NO: 23384-012
ABUTMENT DETAILS		DWG. NO: <b>F3</b>