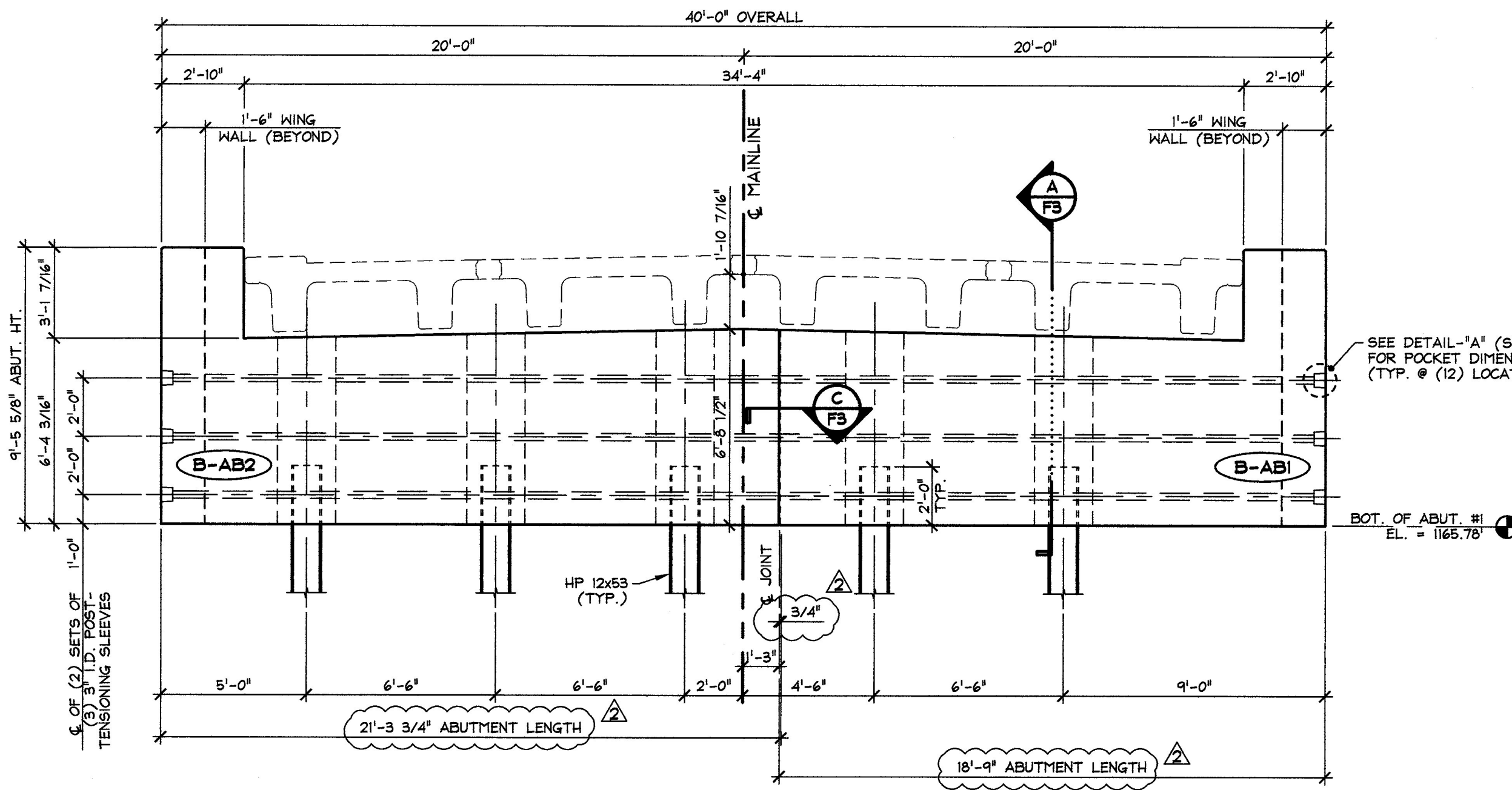
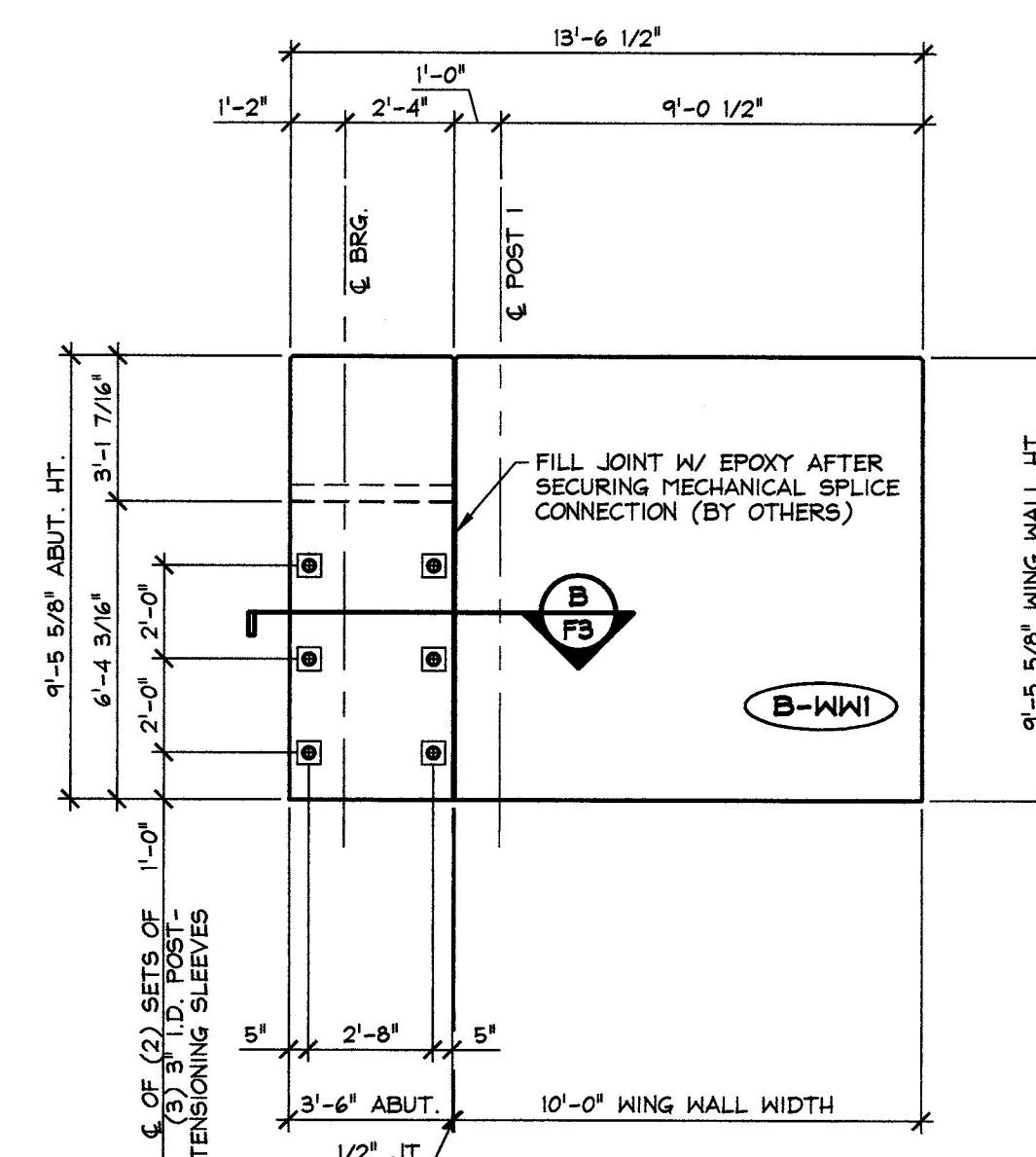


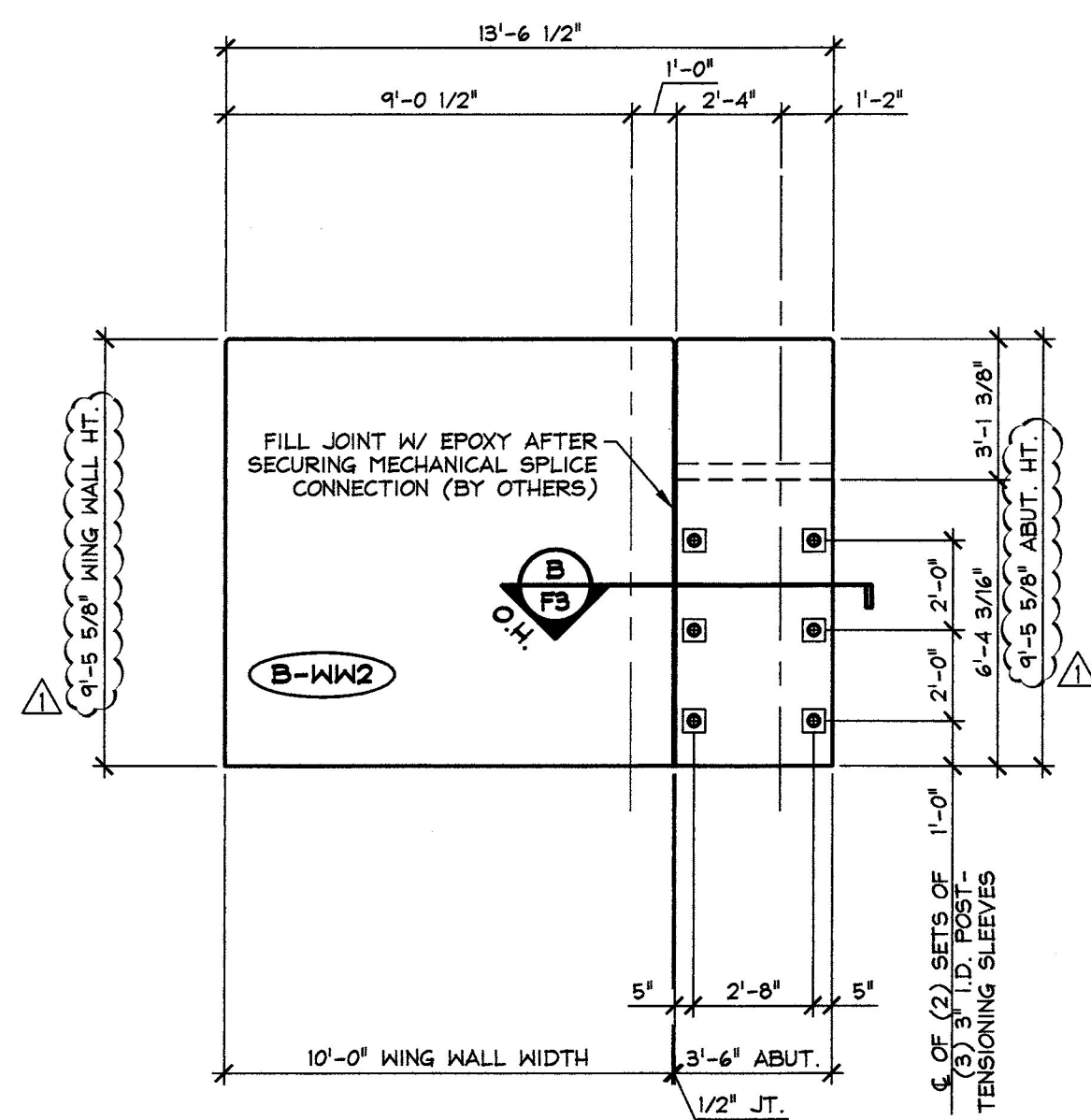
1 WING WALL #2 - SOUTH
F2 ELEVATION 1/4" = 1'-0"



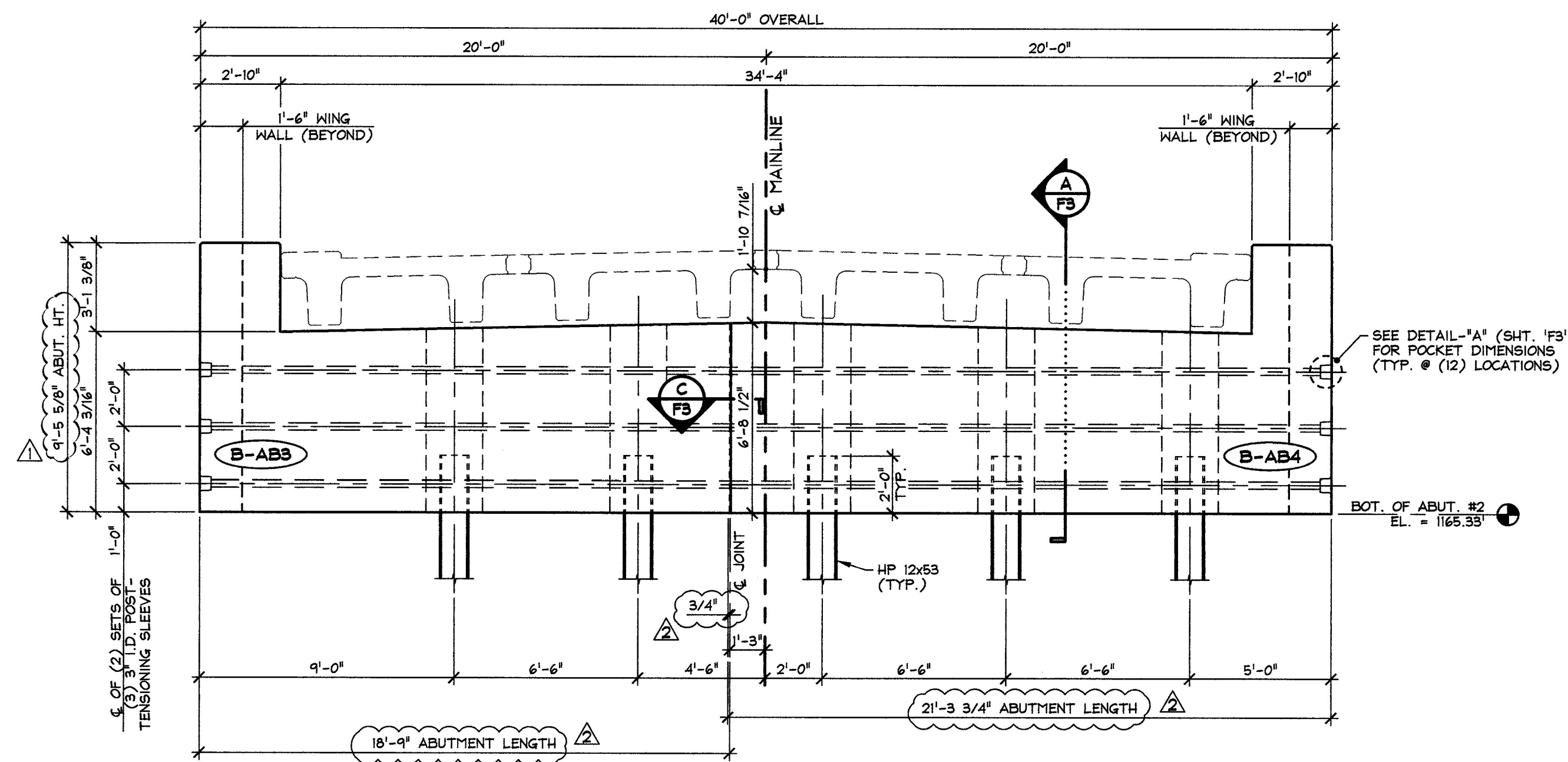
2 ABUTMENT #1 - EAST ELEVATION
F2 1/4" = 1'-0"



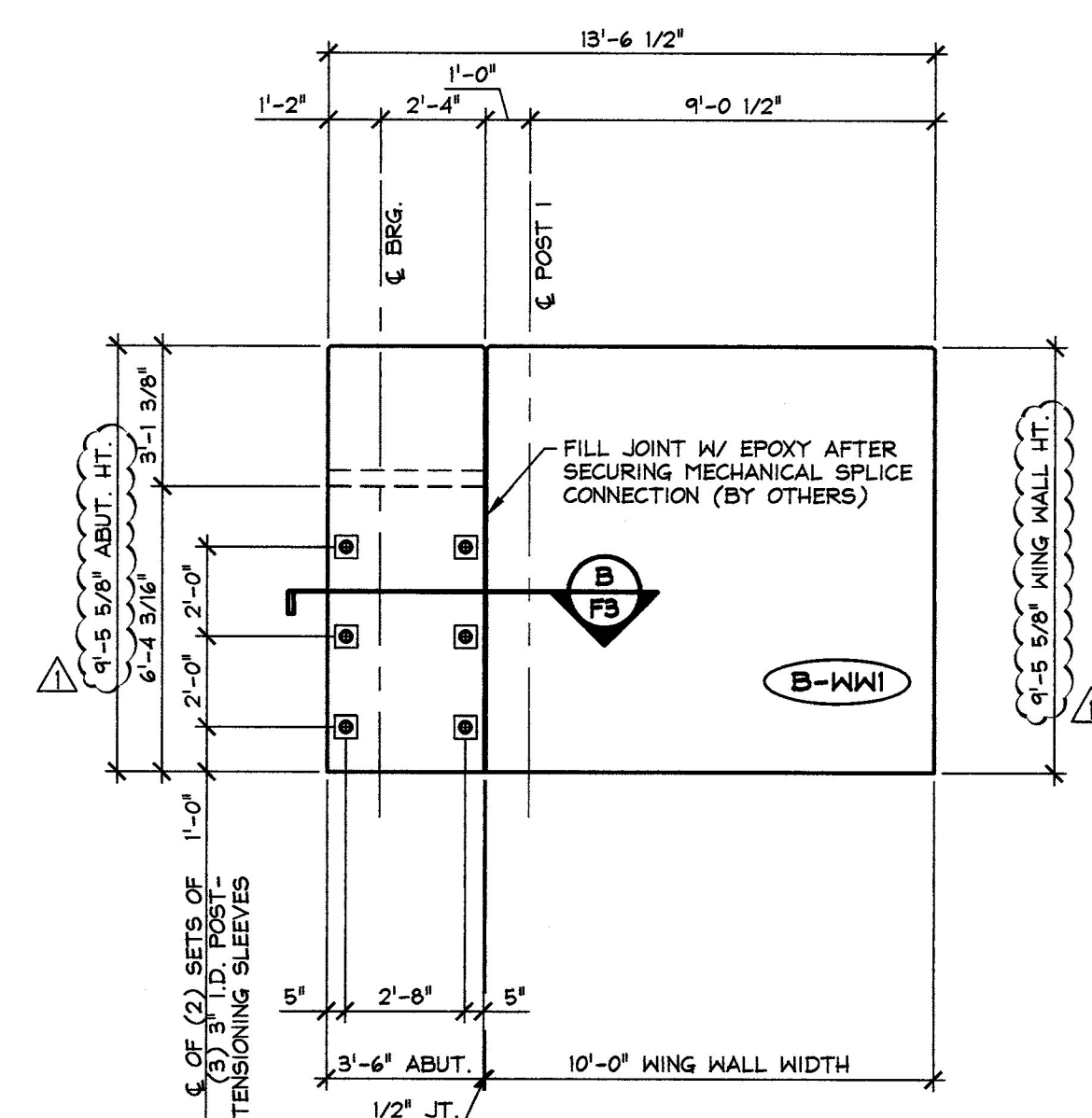
3 WING WALL #1 - NORTH
F2 ELEVATION 1/4" = 1'-0"



4 WING WALL #3 - NORTH
F2 ELEVATION 1/4" = 1'-0"



5 ABUTMENT #2 - WEST ELEVATION
F2 1/4" = 1'-0"



6 WING WALL #4 - SOUTH
F2 ELEVATION 1/4" = 1'-0"

1-3-13 REVISED AS NOTED
12-10-12 REVISE ABUTMENT #1 LAYOUT & ABUTMENT #2 ELEVATIONS

Vermont Agency of Transportation
RECEIVED
CK'D BY WDL OK'D BY JTS
January 9th, 2013
RESUBMIT APPROVED X
BY KMH DATE 1-10-13

SUBMITTED
JAN 9 2013
J.P. CARRARA & SONS, INC.
MIDDLEBURY, VT 05753

J.P. CARRARA & SONS INC. Precast & Prestress Manufacturer 2464 OISE STR., MIDDLEBURY, VERMONT 05753 Phone: (802)388-6361 Fax: (802)388-8010		J.A. McDONALD, INC. CONTRACTOR LYNDON CENTER, VERMONT	
STATE OF VERMONT AGENCY OF TRANSPORTATION COUNTY OF ESSEX		DATE: OCT. 30, 2012 SCALE: NOTED	
TOWN OF BRIGHTON ROUTE NO. VT 105, MINOR ARTERIAL BRIDGE NO.: 84 PROJECT NO.: ER STP 034-3(25)		CHKD: B.C. DFTM: B.L. JOB NO: 23384-012	
ABUTMENT ELEVATIONS		DWG. NO: F2	