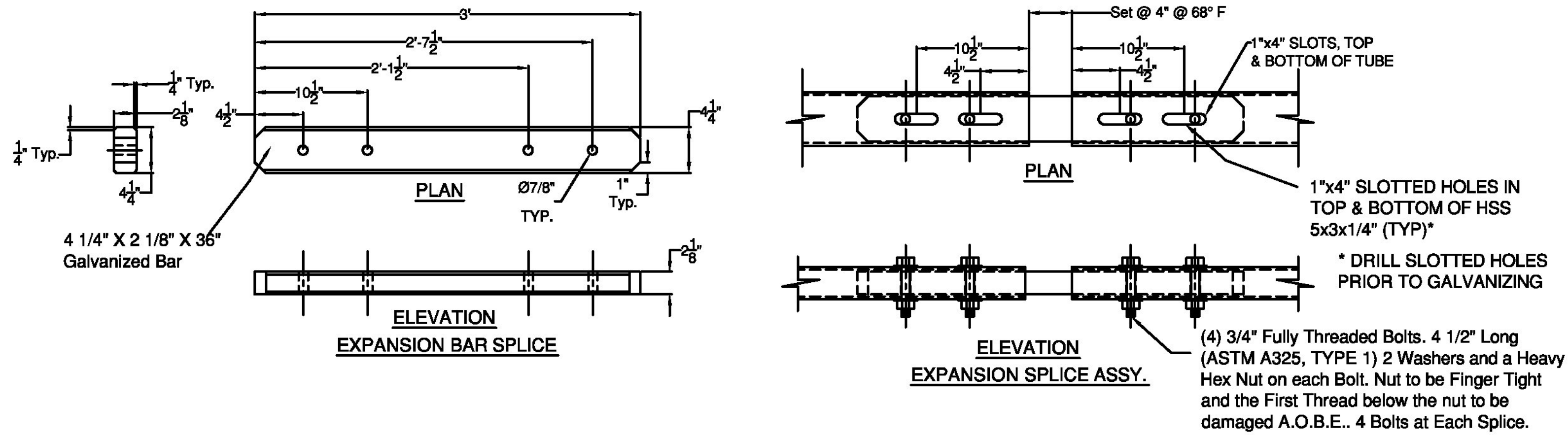
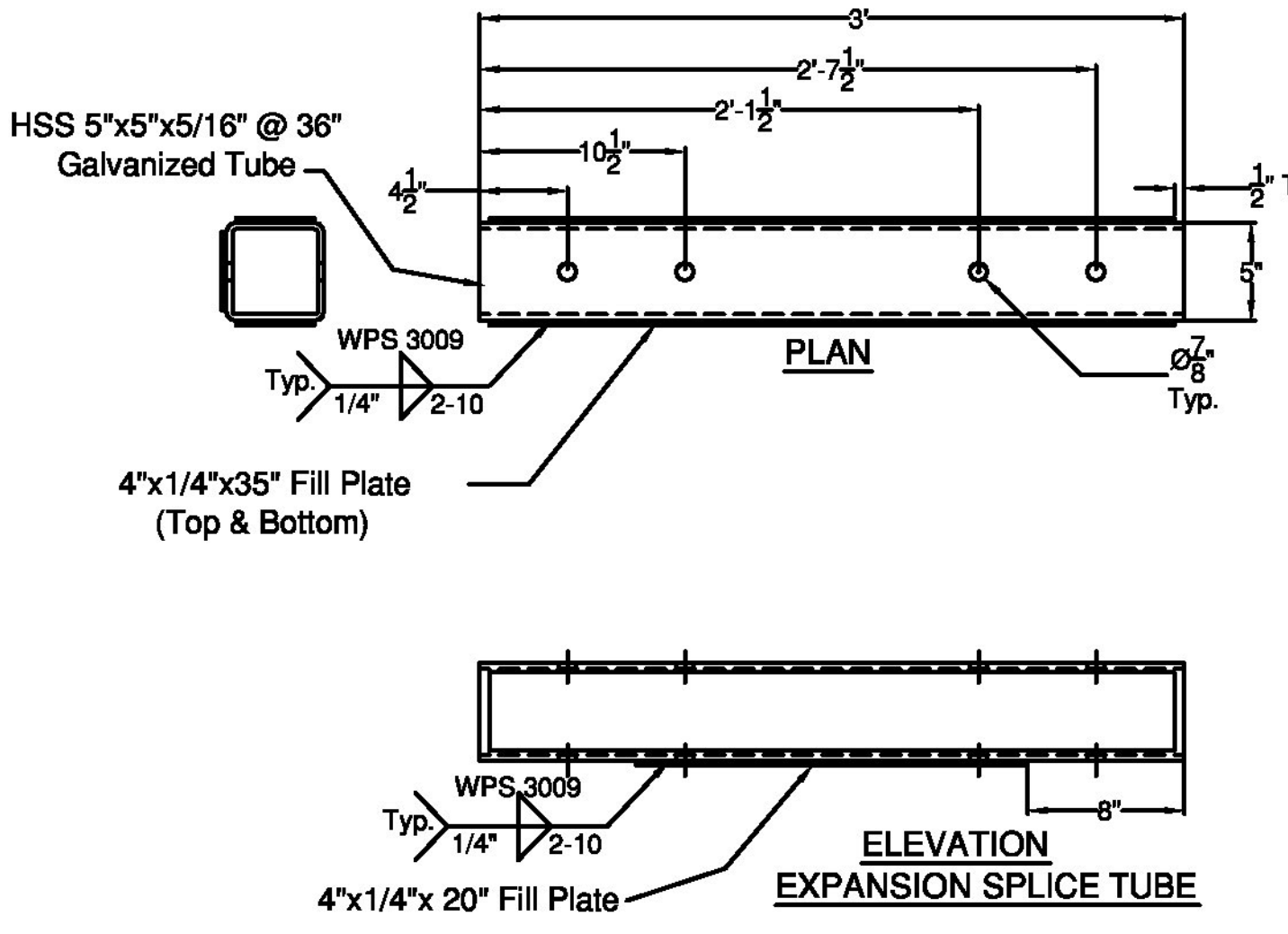


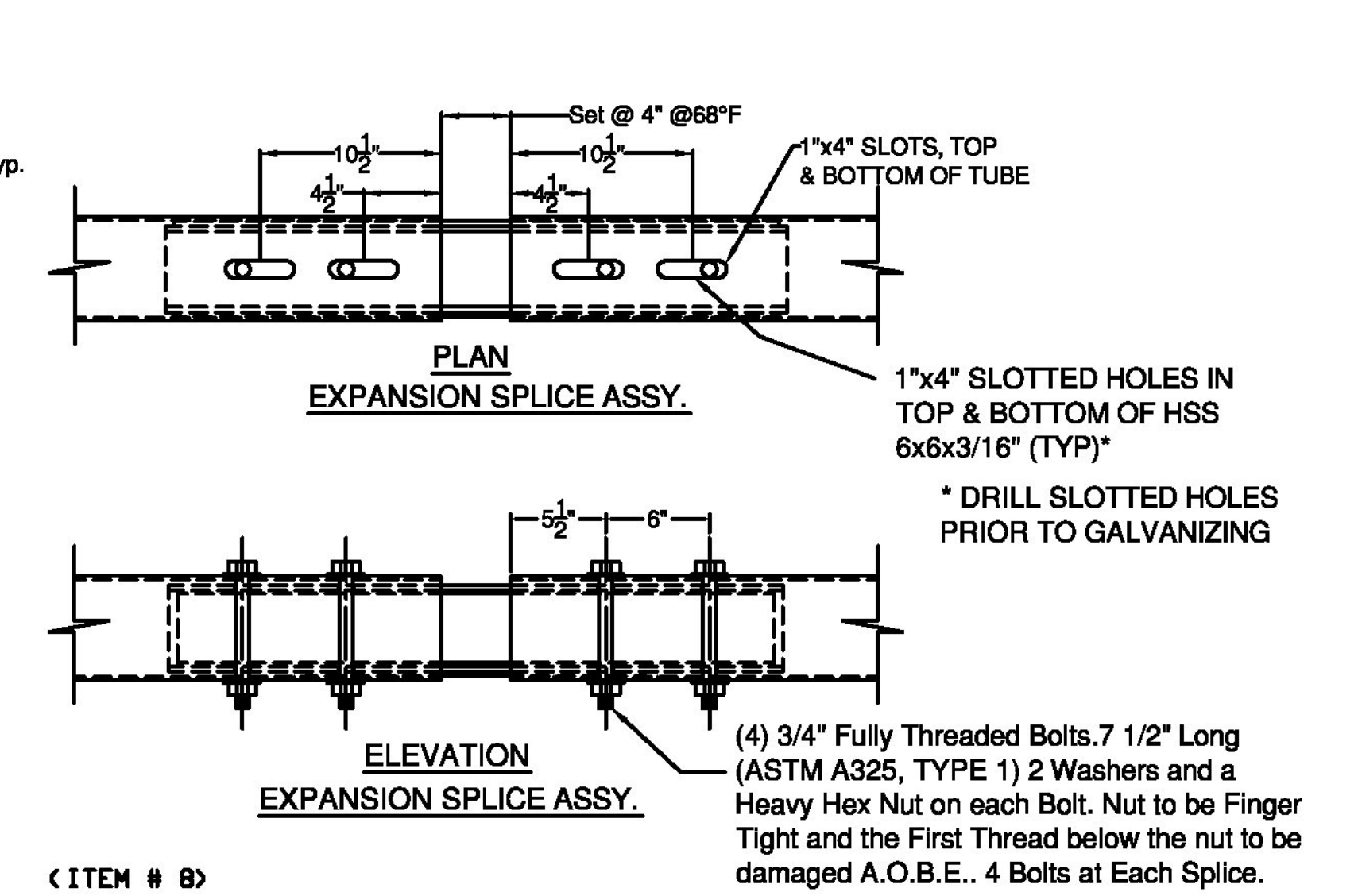
SPLICE BAR - EXPANSION



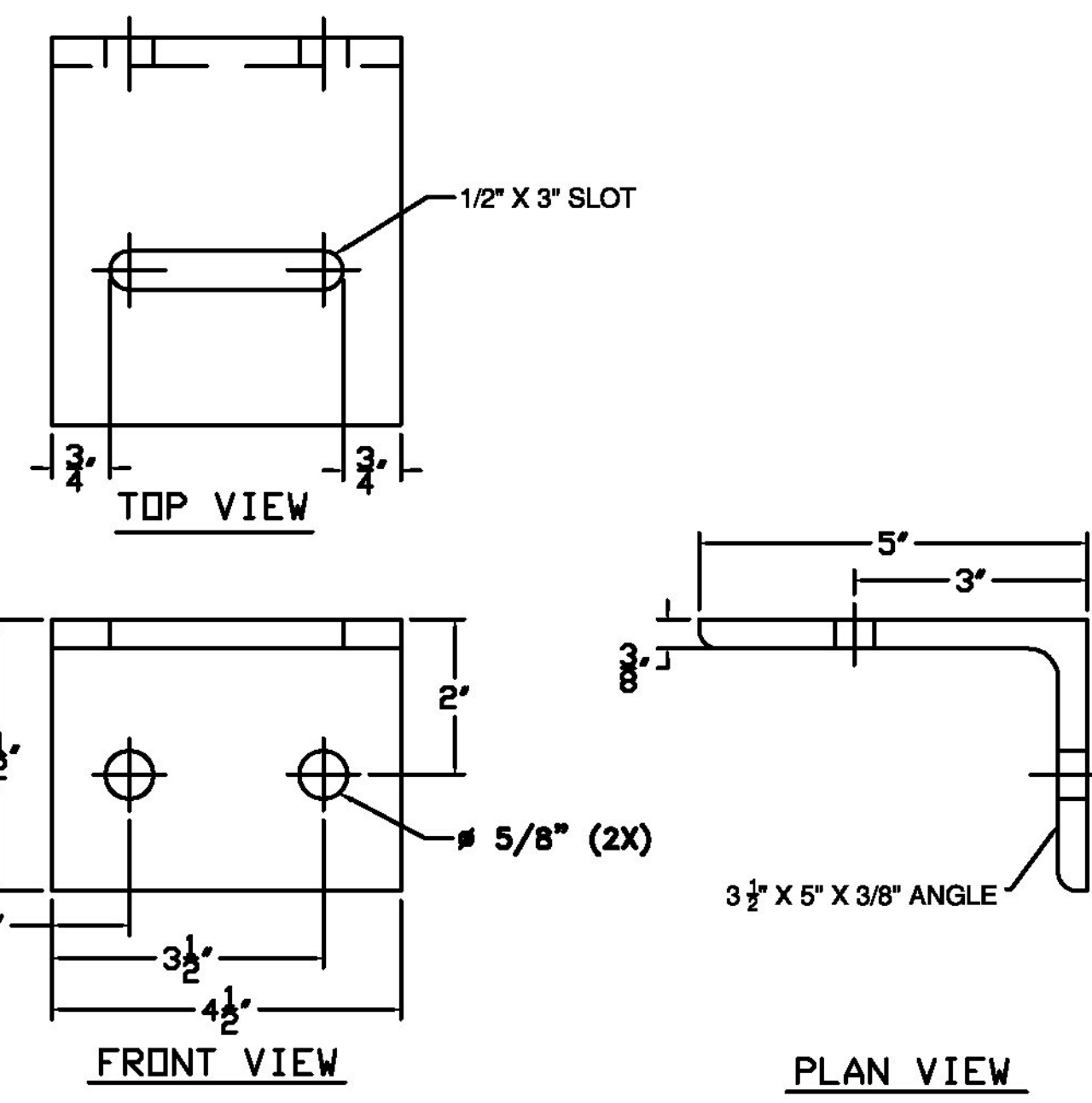
(ITEM # 9)



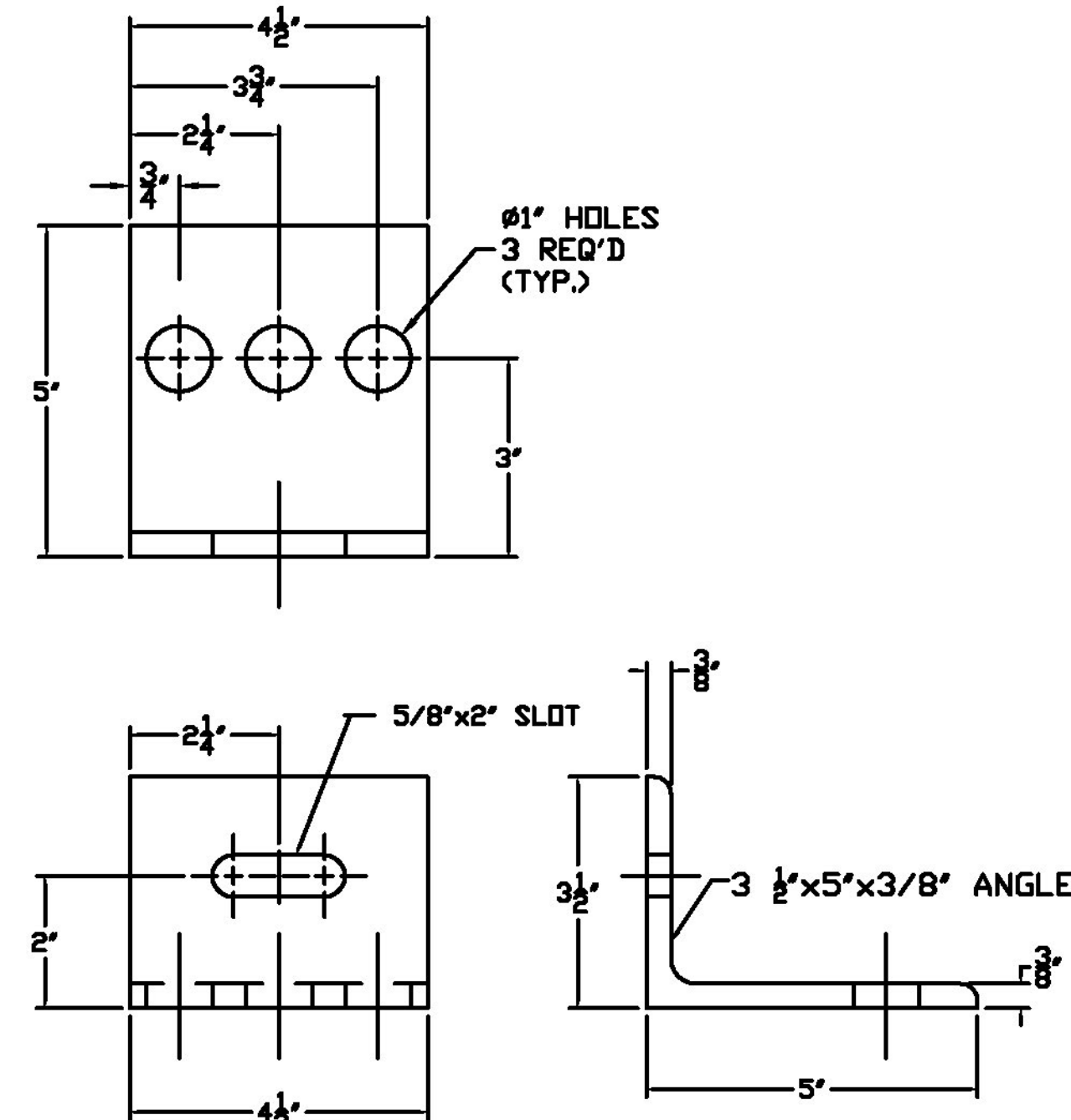
SPLICE TUBE - EXPANSION



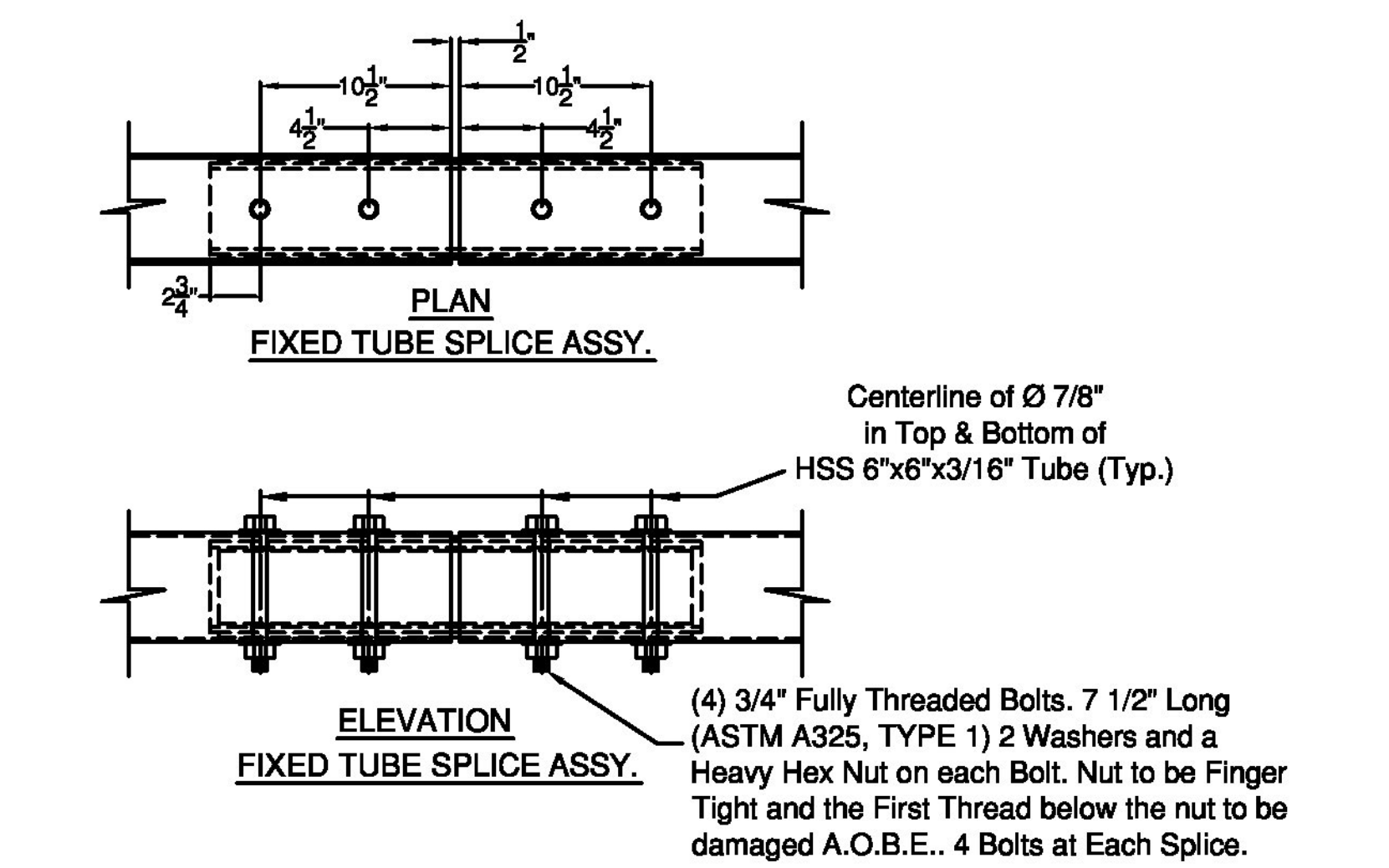
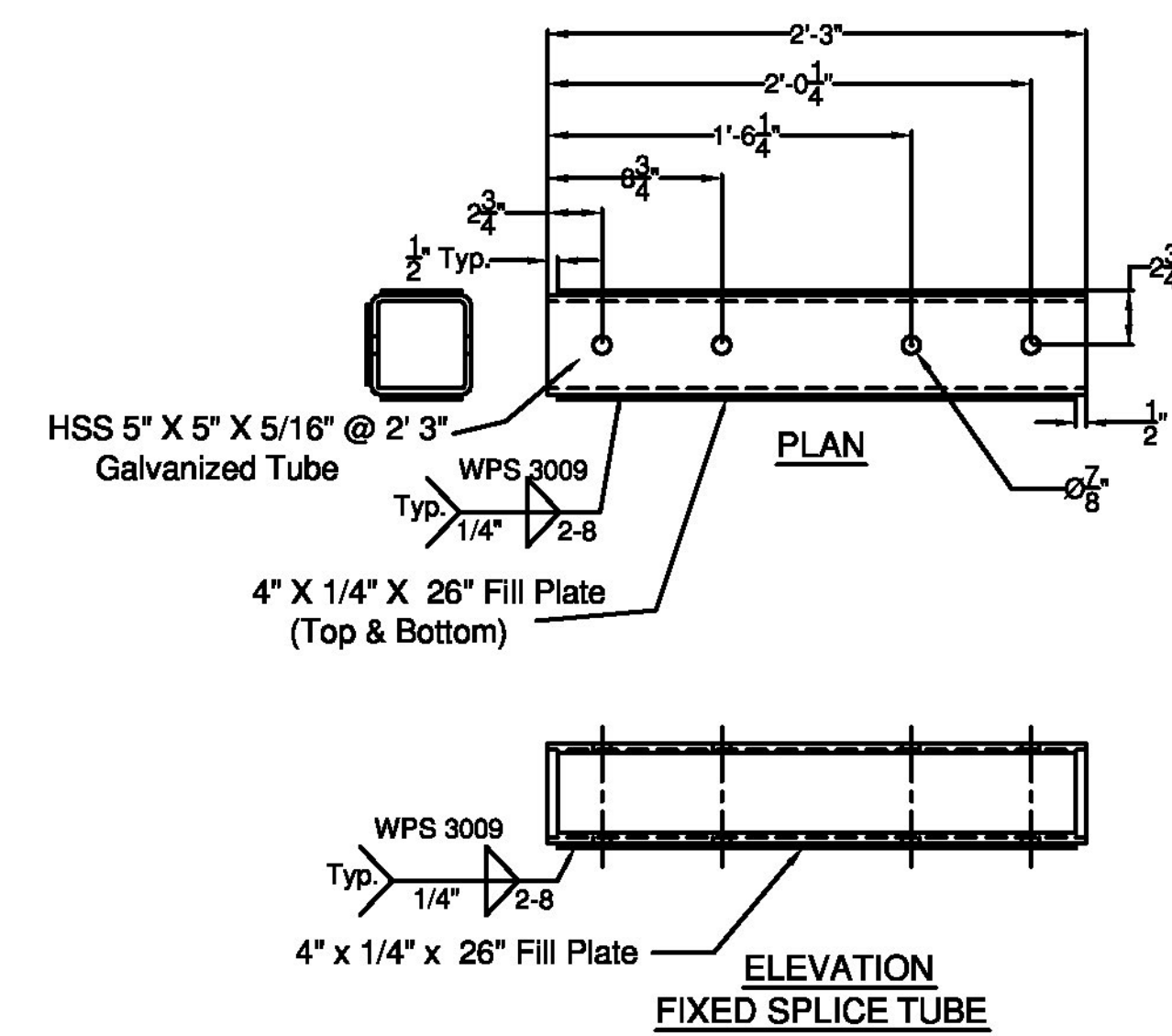
(ITEM # 8)



(ITEM # 10)

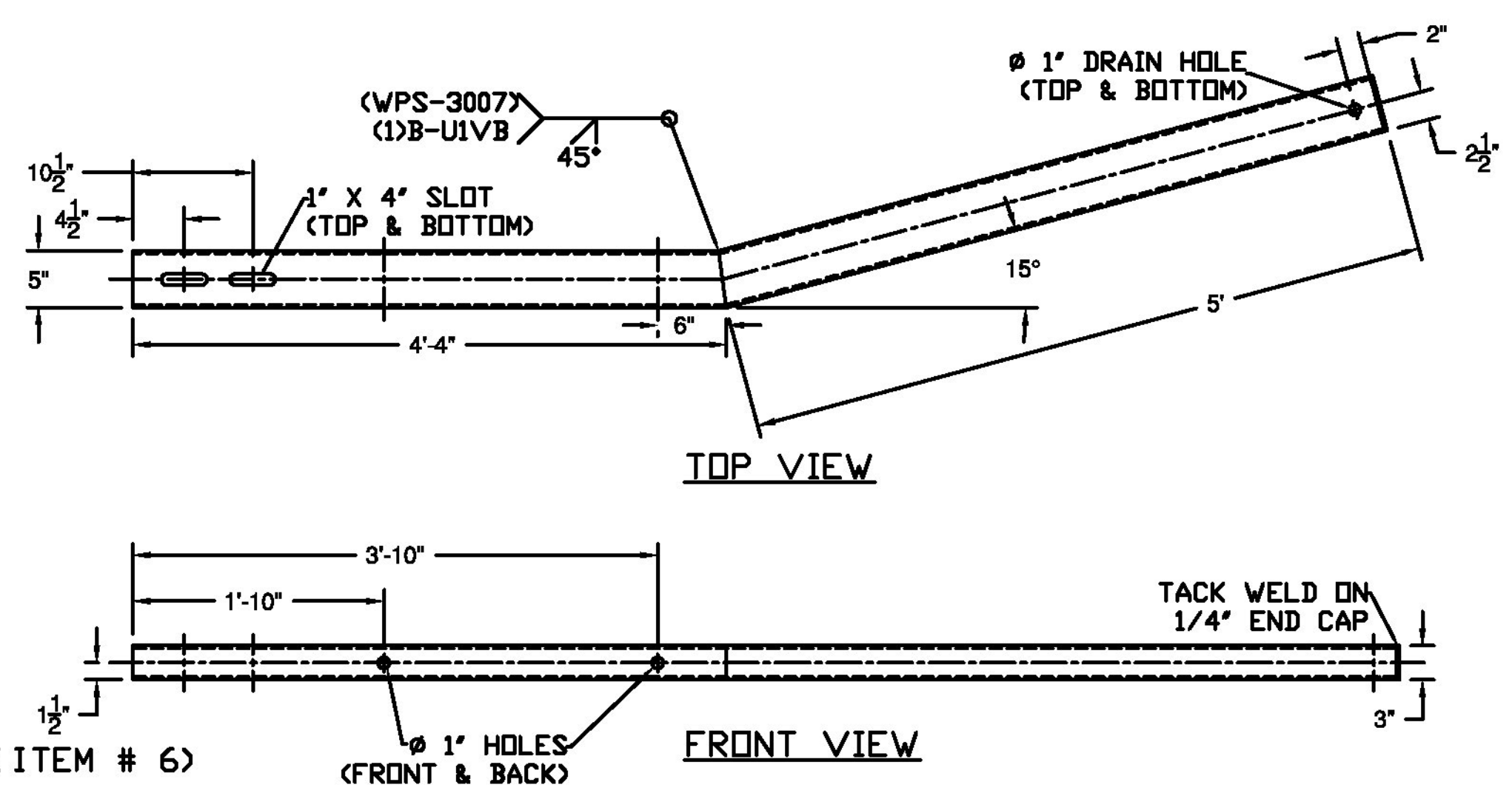


(ITEM # 11)

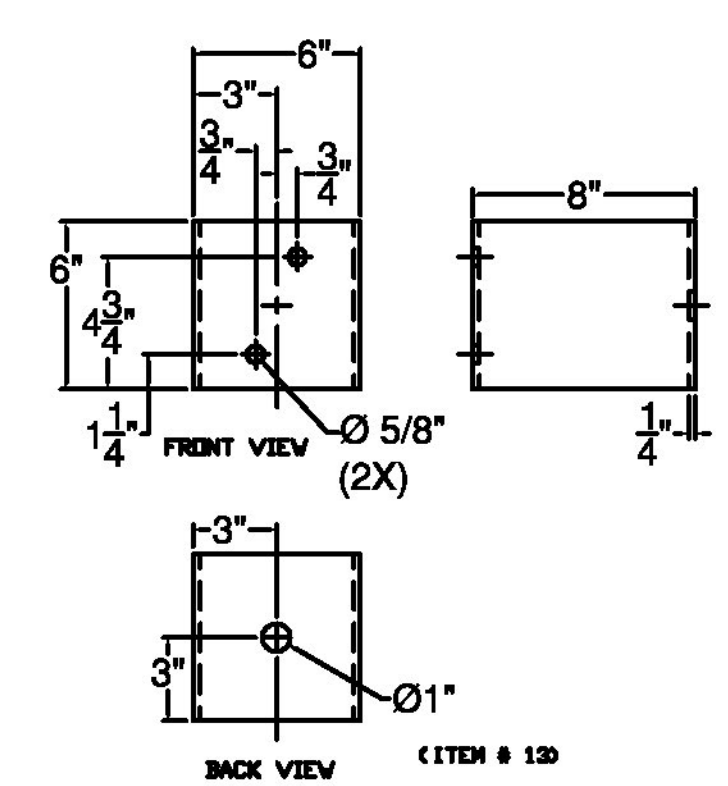


(ITEM # 7)

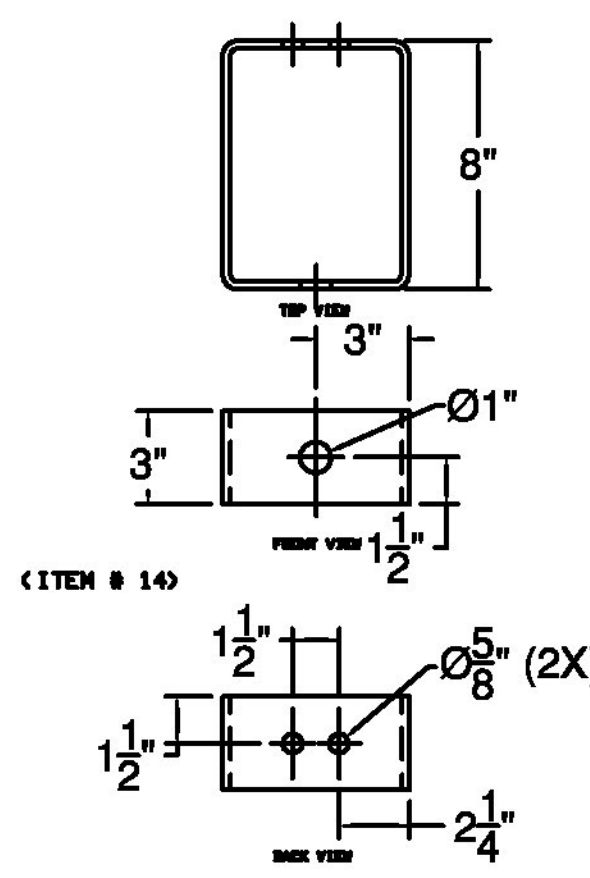
SPLICE TUBE - FIXED



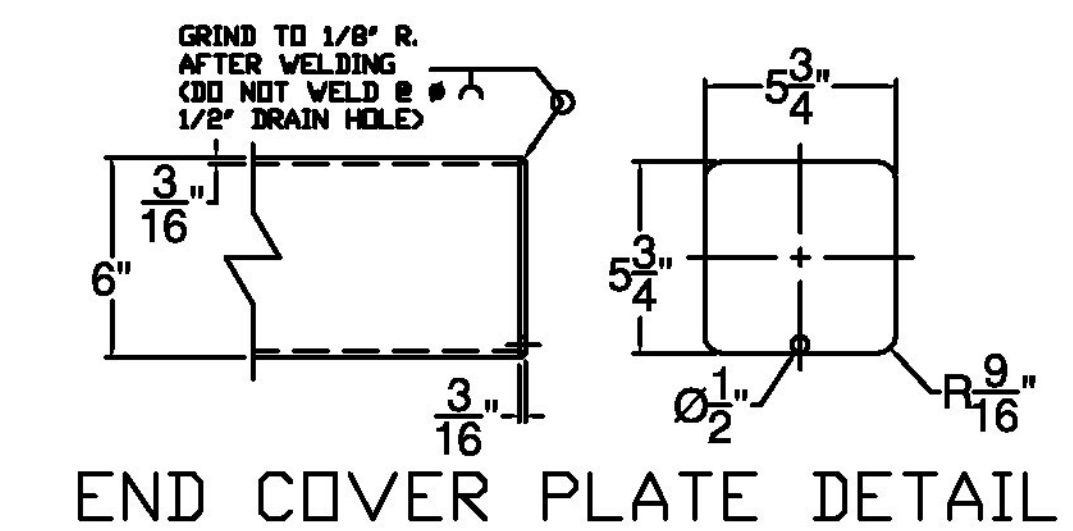
(ITEM # 6)



(ITEM # 12)



(ITEM # 14)



ITEM #: 525.335

Vermont Agency of Transportation

RECEIVED

CK'D BY R. Klinefelter OK'D BY J. Salvatori

February 14, 2013

RESUBMIT BY K. Higgins

Approved X

DATE 02/19/13

F.R. LAFAYETTE, P.O. 27399

SHEET 4 OF 4

GUARD RAIL TO BRIDGE RAIL TRANSITION DETAILS SHEET

PROJECT: BRIGHTON, PROJECT # ER STP 034-3(25), MINOR ARTERIAL, BRIDGE # 84

TOWN OF BRIGHTON, ESSEX COUNTY, VT.

R NO.	DATE	DESCRIPTION	BY	R NO.	DATE	DESCRIPTION	BY
E 1	12/26/12	REVISED PER 12/26/12 EMAIL	E.P.				
V 2	1/9/13	REVISED PER 1/9/13 EMAIL	V				

DRAWN	E.P.	12/03/12
CHECKED	D.L.	12/03/12
APPROVED		
SCALE	SCHEMATIC	
DRAWING NO. F.R. LAFAYETTE BRIGHTON		

ELDERLEE, INC.

OAKS CORNERS, NEW YORK 14518

E-Mail: dlong@elderlee.com

Tel: 315-789-6670 Fax: 315-789-6615