

GPS CONTROL POINTS

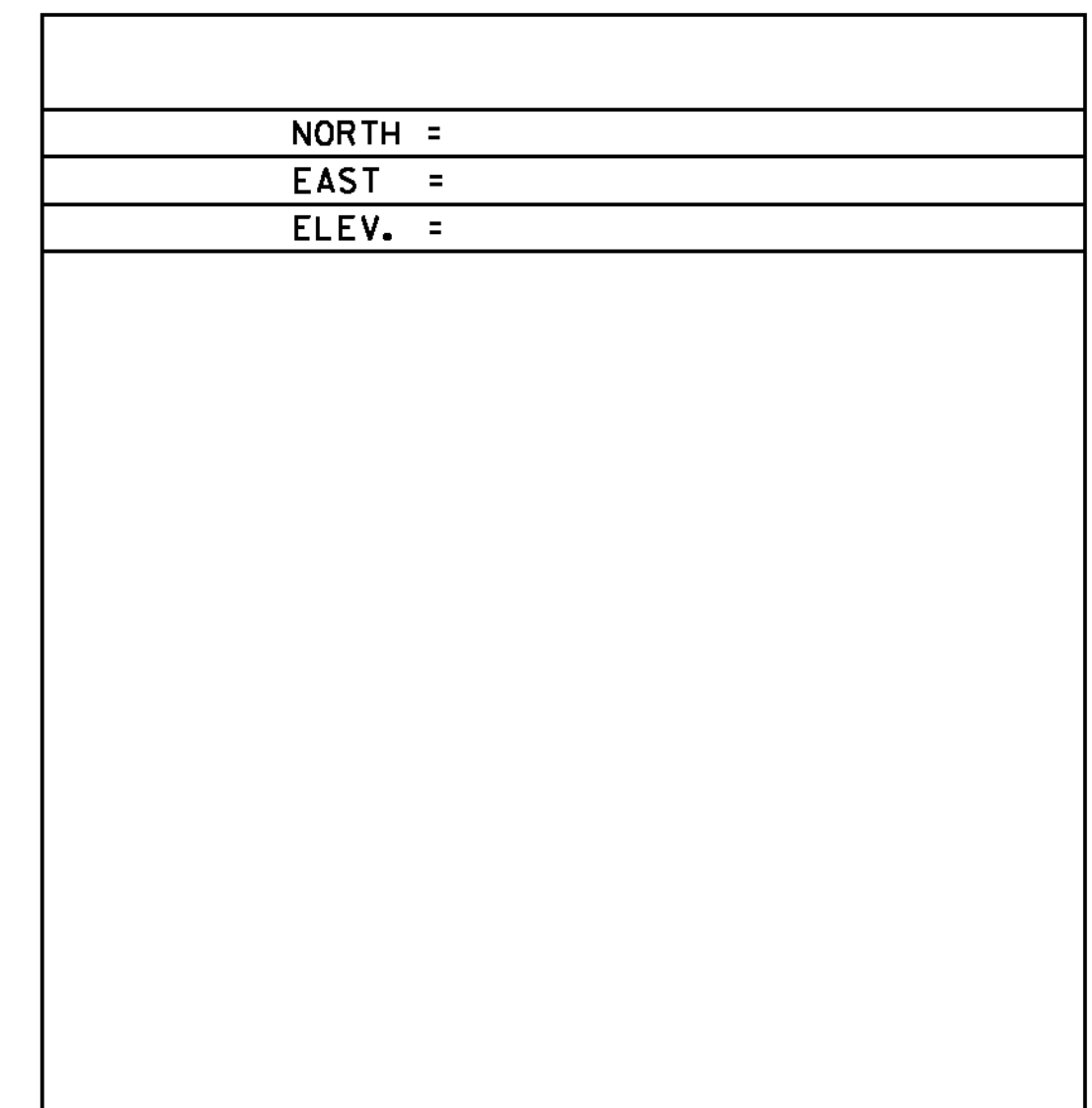
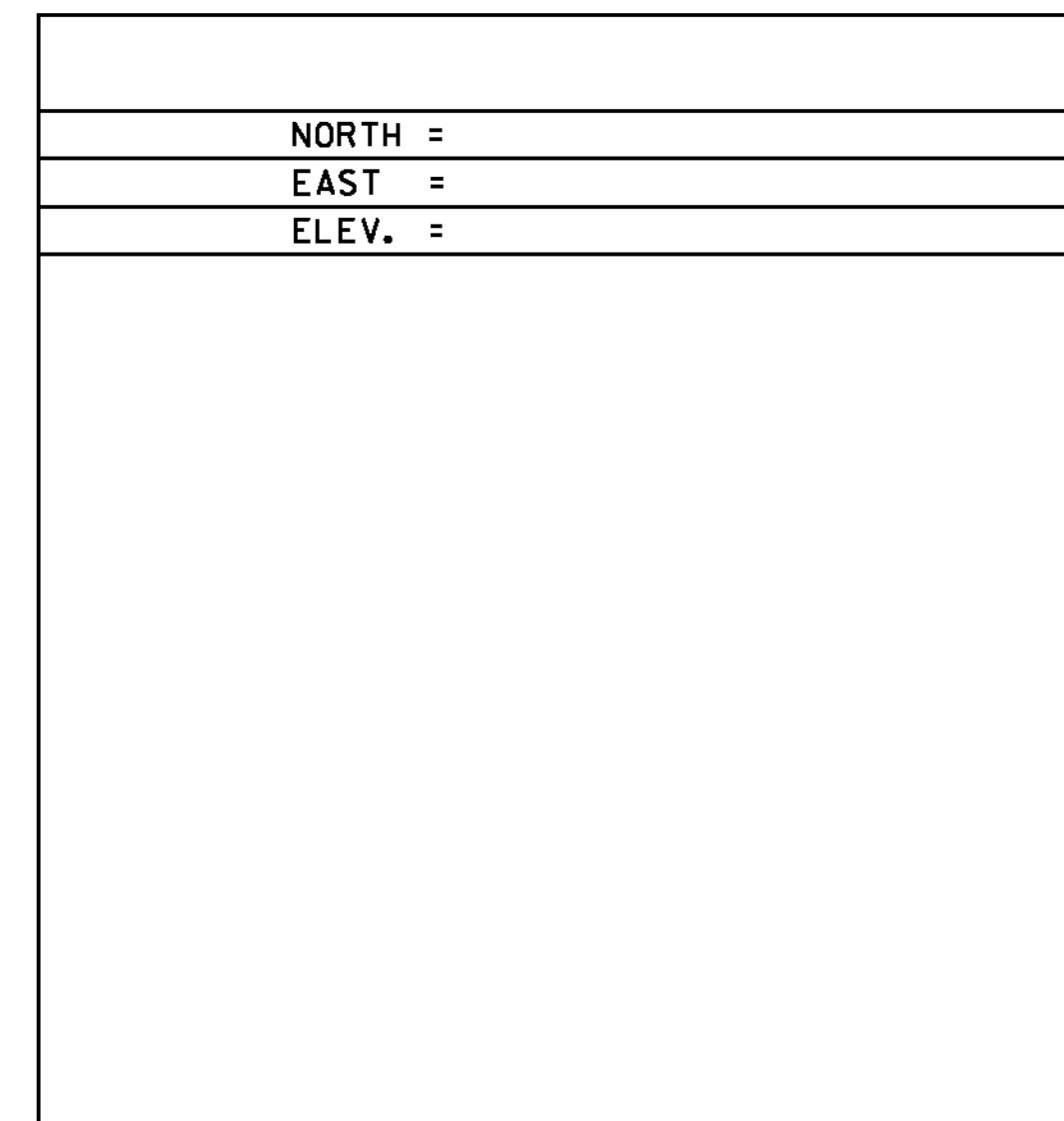
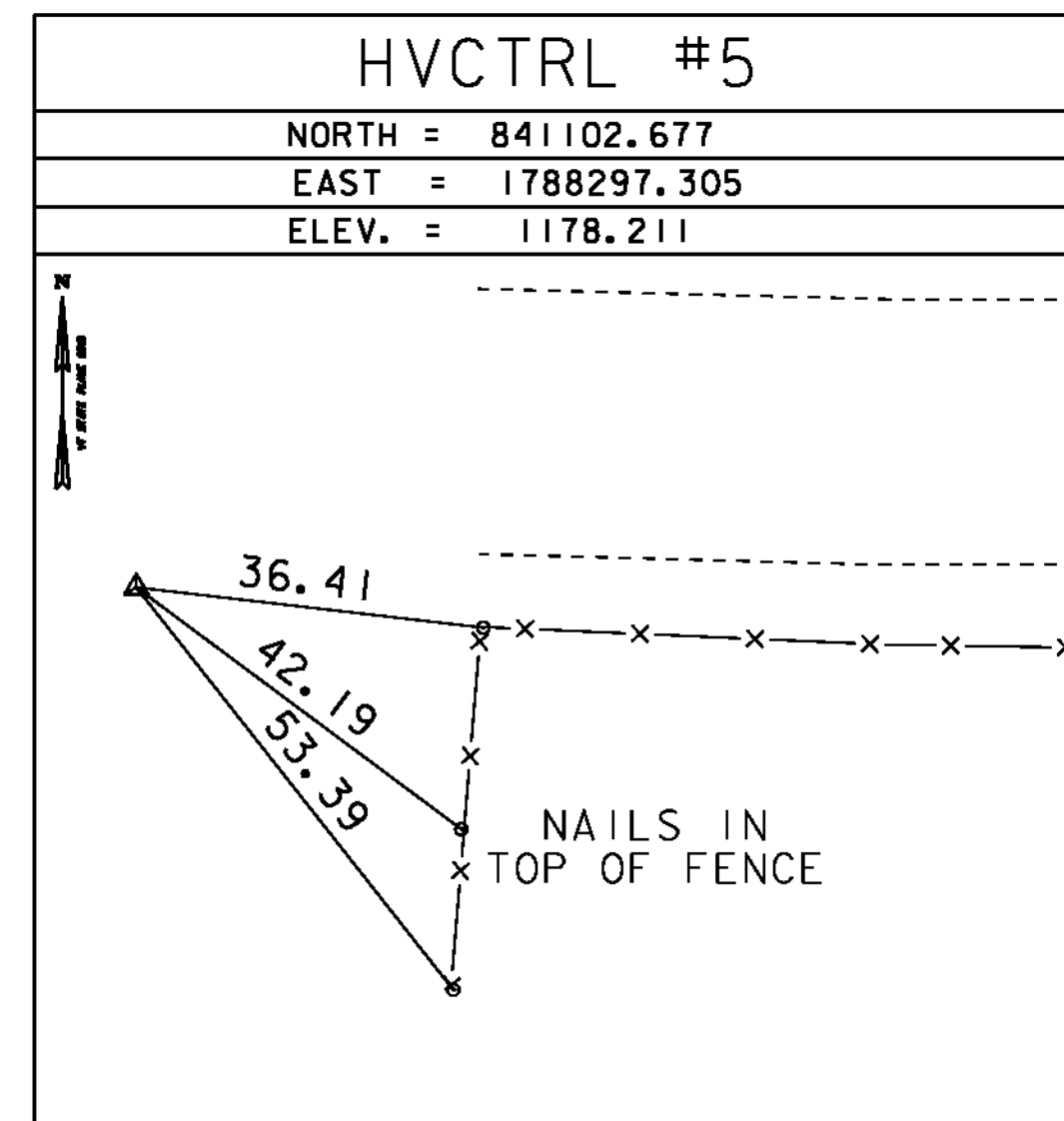
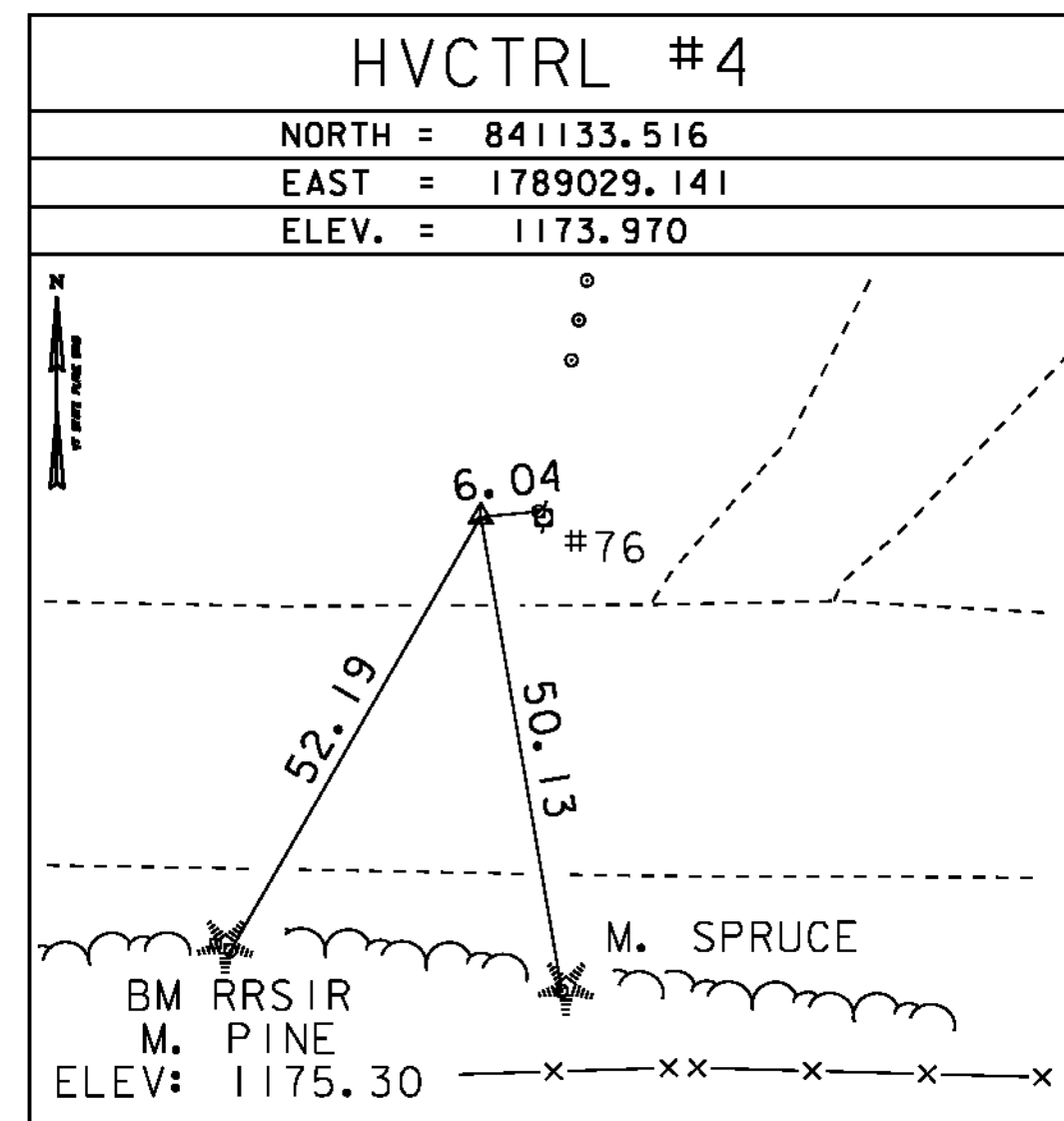
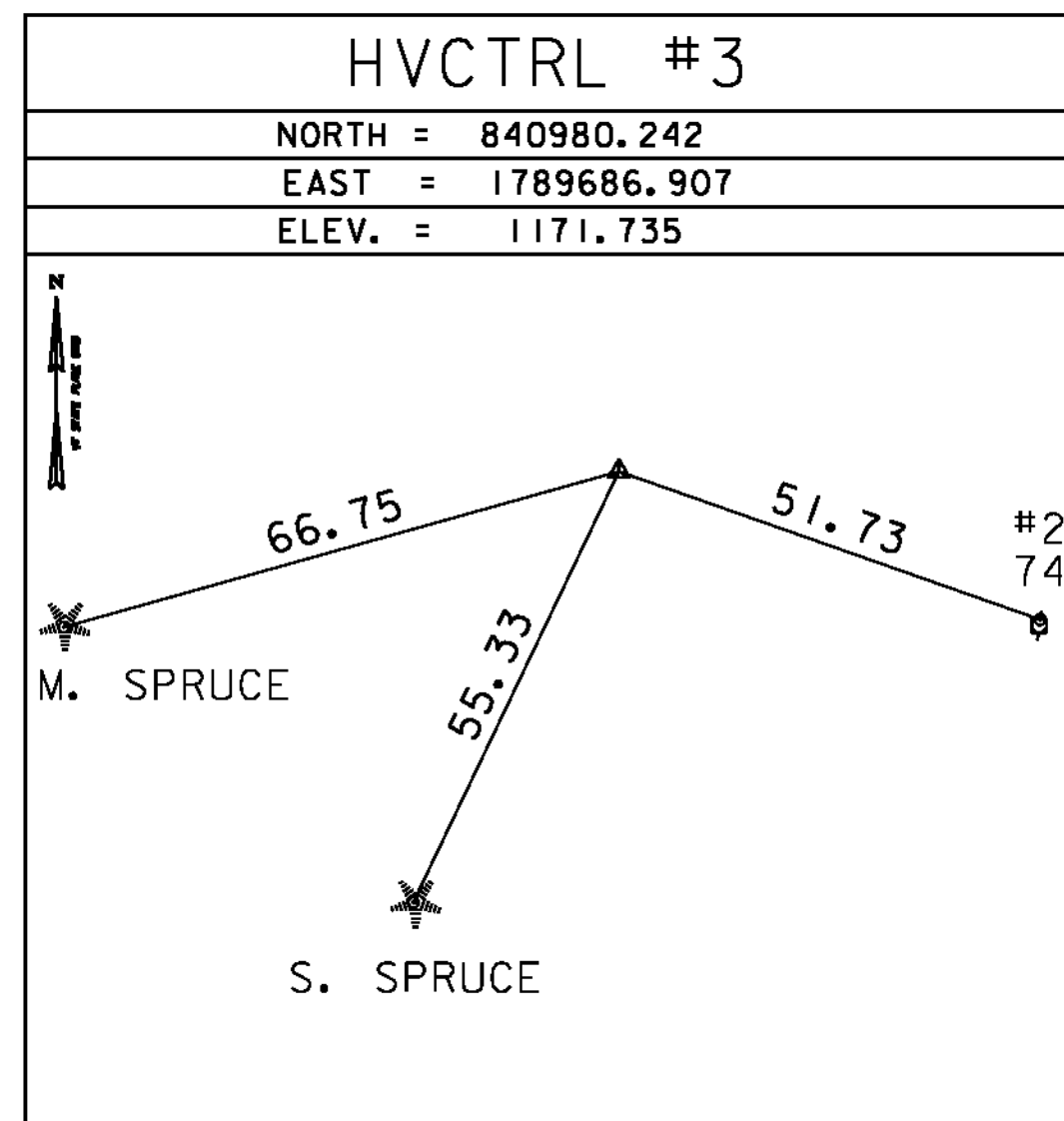
HVCTRL #1  
 PORTER AZ MK  
 NORTH = 839791.546  
 EAST = 1791829.618  
 ELEV. = 1189.855

TO REACH FROM THE INTERSECTION OF VT 114 SOUTH AND VT 105, GO NORTHWEST ALONG VT 105 FOR 0.4 MI TO THE SITE OF THE MARK ON THE LEFT. THE MARK IS SET 4" BELOW GROUND SURFACE IN THE TOP OF A 12" DIAMETER CONCRETE MONUMENT. IT IS 22.3' WEST-SOUTHWEST OF AND 3.3' LOWER THE CENTERLINE OF VT 105, 110' NORTH-NORTHWEST OF THE CENTERLINE OF A GRAVEL DRIVE LEADING TO THE GOODHILE RESIDENCE, 41.7' SOUTH OF A METAL ROAD SIGN, 87.6' EAST-NORTHEAST OF A 16" PINE, 154.5' NORTHEAST OF THE NORTH CORNER OF A 2 BAY GARAGE, 12' NORTH OF A LILAC BUSH, 88.6' EAST OF A METAL POST FOR A SATELLITE DISH, AND 1' EAST-NORTHEAST OF A FIBERGLASS WITNESS POST.

HVCTRL #2  
 PORTER  
 NORTH = 840414.211  
 EAST = 1790457.251  
 ELEV. = 1200.817

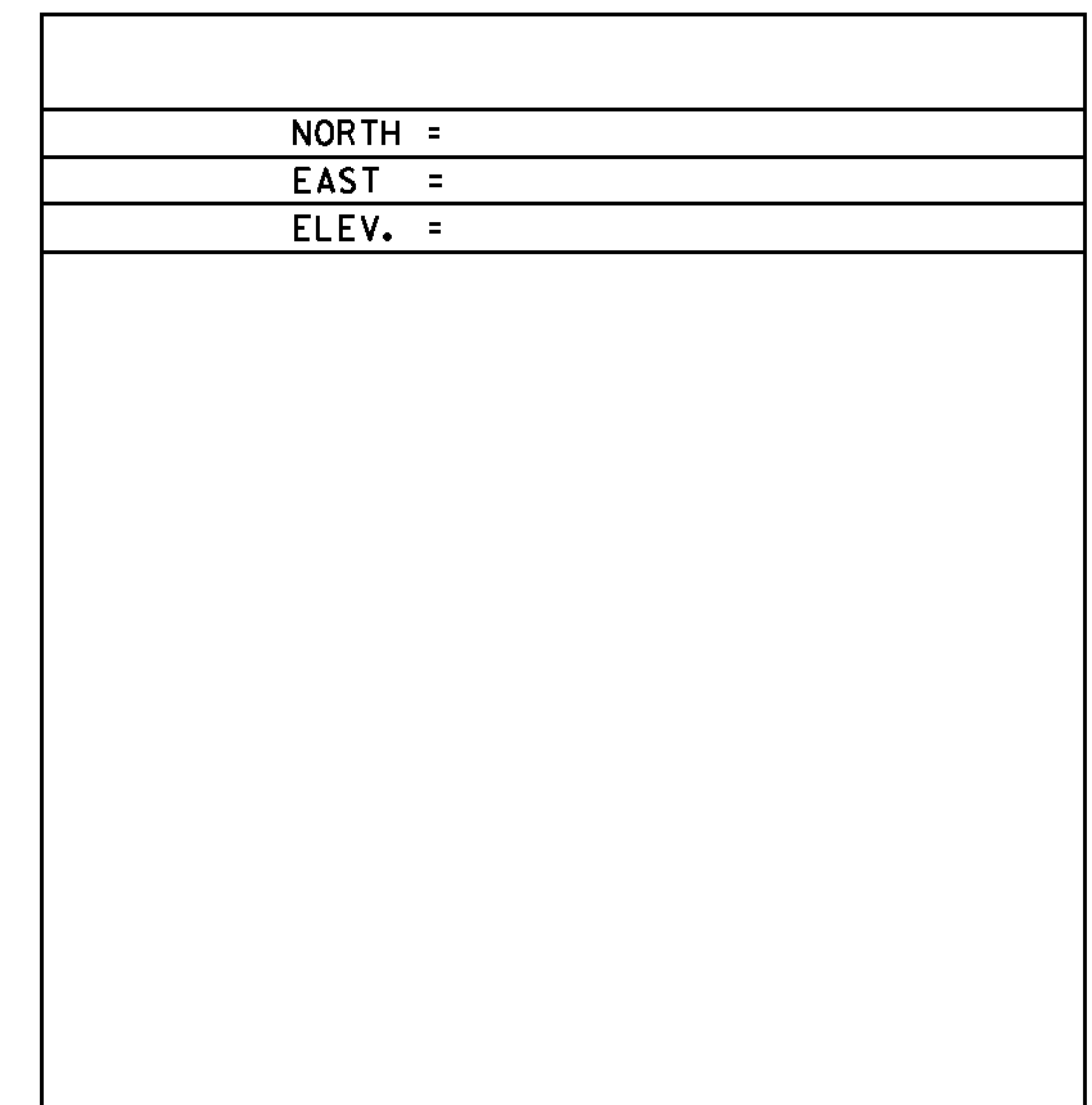
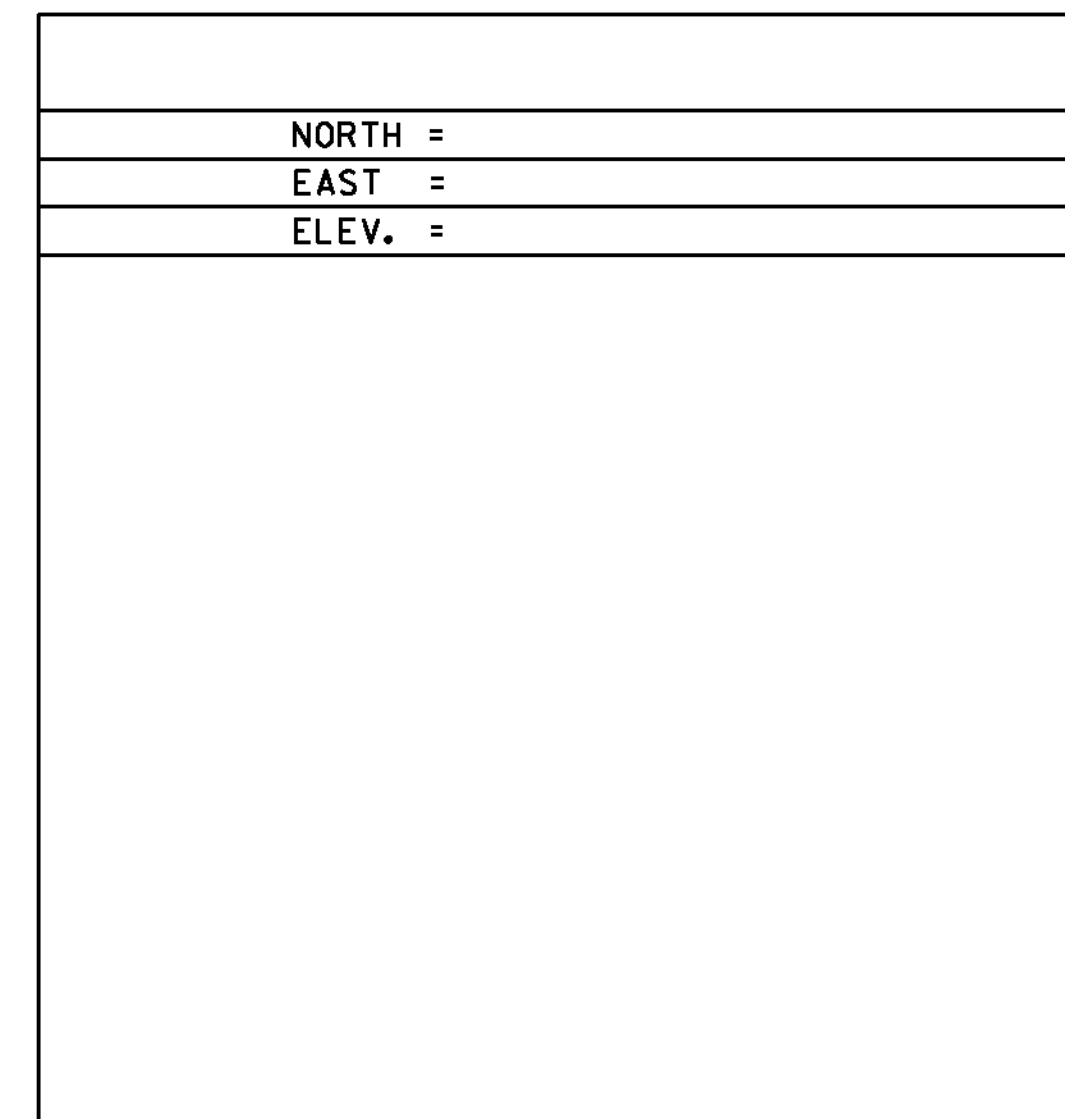
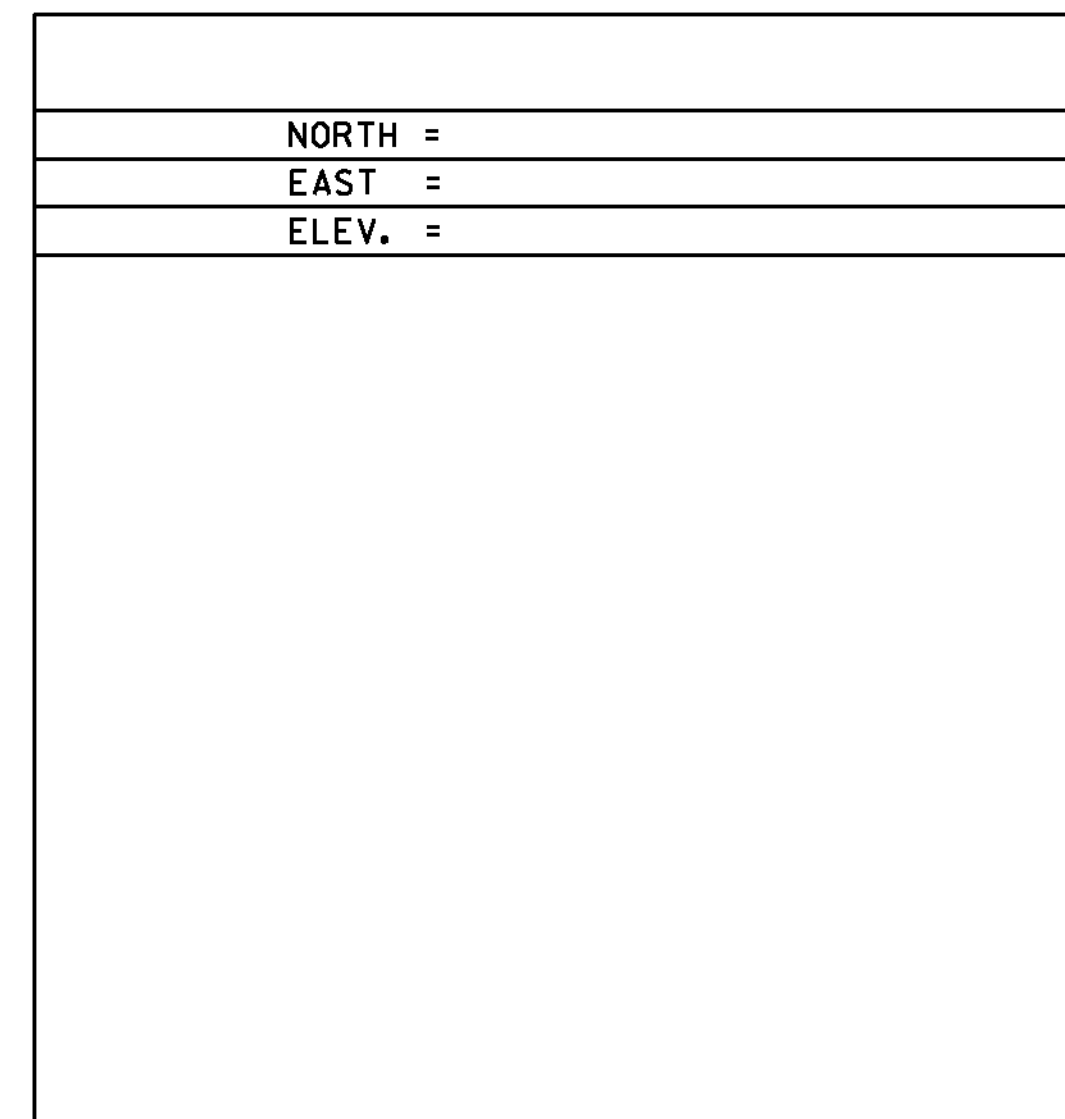
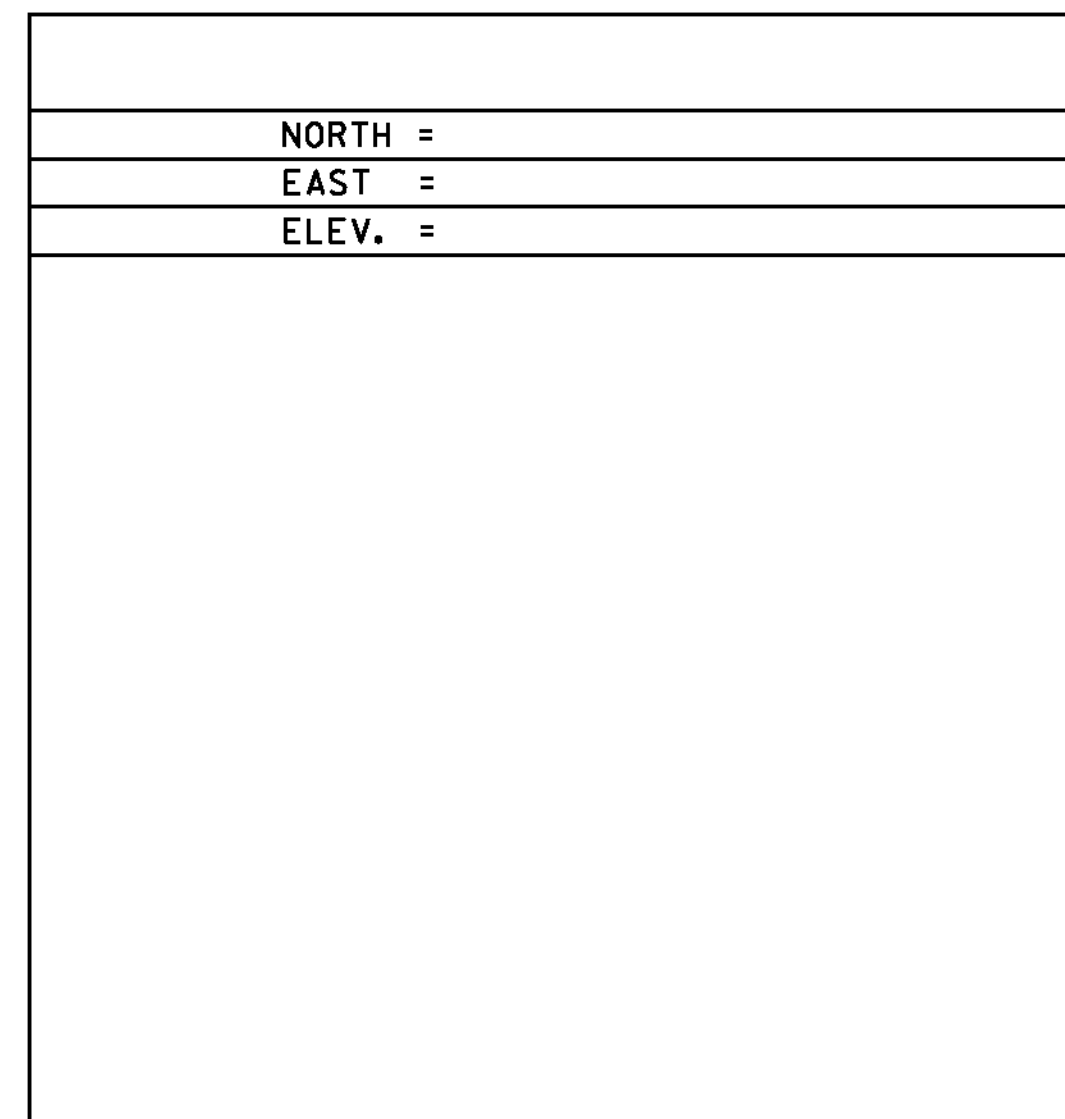
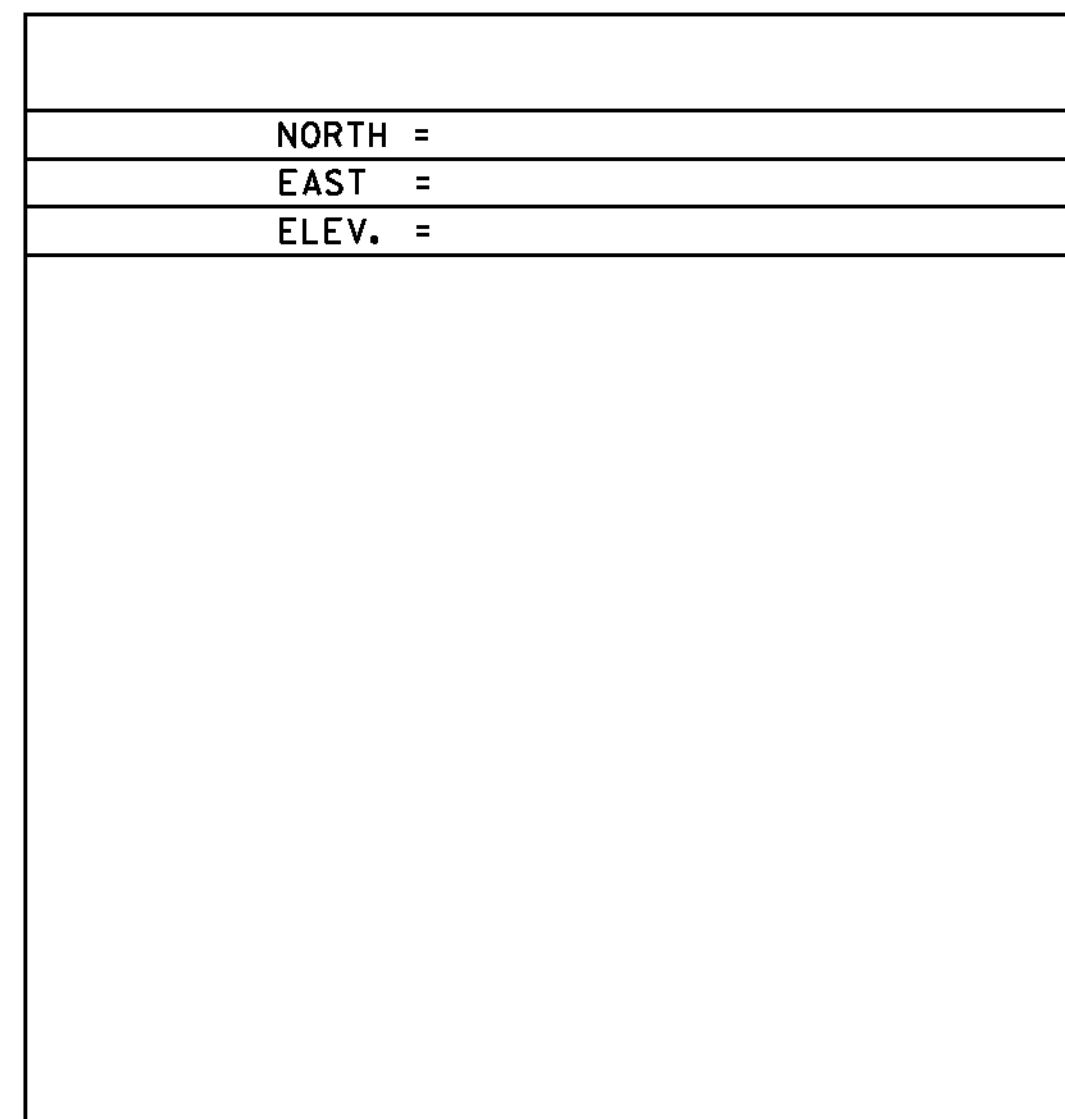
TO REACH FROM THE INTERSECTION OF VT 114 SOUTH AND VT 105, GO NORTHWEST ALONG VT 105 FOR 0.8 MI TO THE SITE OF THE MARK ON THE LEFT. THE MARK IS SET 2" BELOW GROUND SURFACE IN THE TOP OF A 12" DIAMETER CONCRETE MONUMENT. IT IS 27.6' SOUTH-SOUTHWEST OF AND ABOUT 2.6' HIGHER THAN THE CENTERLINE OF VT 105, 89.2' WEST-NORTHWEST OF THE NORTH CORNER OF A SMALL WOODEN STORAGE BUILDING, 115' EAST-SOUTHWEST OF A 20" ELM, 74.5' WEST-SOUTHWEST OF AND ACROSS THE ROAD FROM THE SOUTH CORNER OF THE PORTER FARM BARN, 75.5' SOUTH-SOUTHWEST OF AND ACROSS THE ROAD FROM THE SOUTH CORNER OF THE ENCLOSED PORCH OF A 2 STORY HOUSE, 21' WEST OF THE CENTERLINE OF A FARM DRIVE, AND 1' NORTH-NORTHEAST OF A FIBERGLASS WITNESS POST.

TRAVERSE TIES



\*TRAVERSE COMPLETED 10/14/2011 BY R. GILMAN P.C. & P. WINTERS

ALIGNMENT TIES



DATUM	
VERTICAL	NAVD 88
HORIZONTAL	NAD 83 (07)
ADJUSTMENT	COMPASS

PROJECT NAME:	BRIGHTON	PLOT DATE:	12-SEP-2012
PROJECT NUMBER:	ER STP 034-3(25)	PROJECT LEADER:	K. HIGGINS
FILE NAME:	slb208+1.dgn	DRAWN BY:	W. LAMMER
DESIGNED BY:	W. LAMMER	CHECKED BY:	J. SALVATORI
TIE SHEET		SHEET	8 OF 36