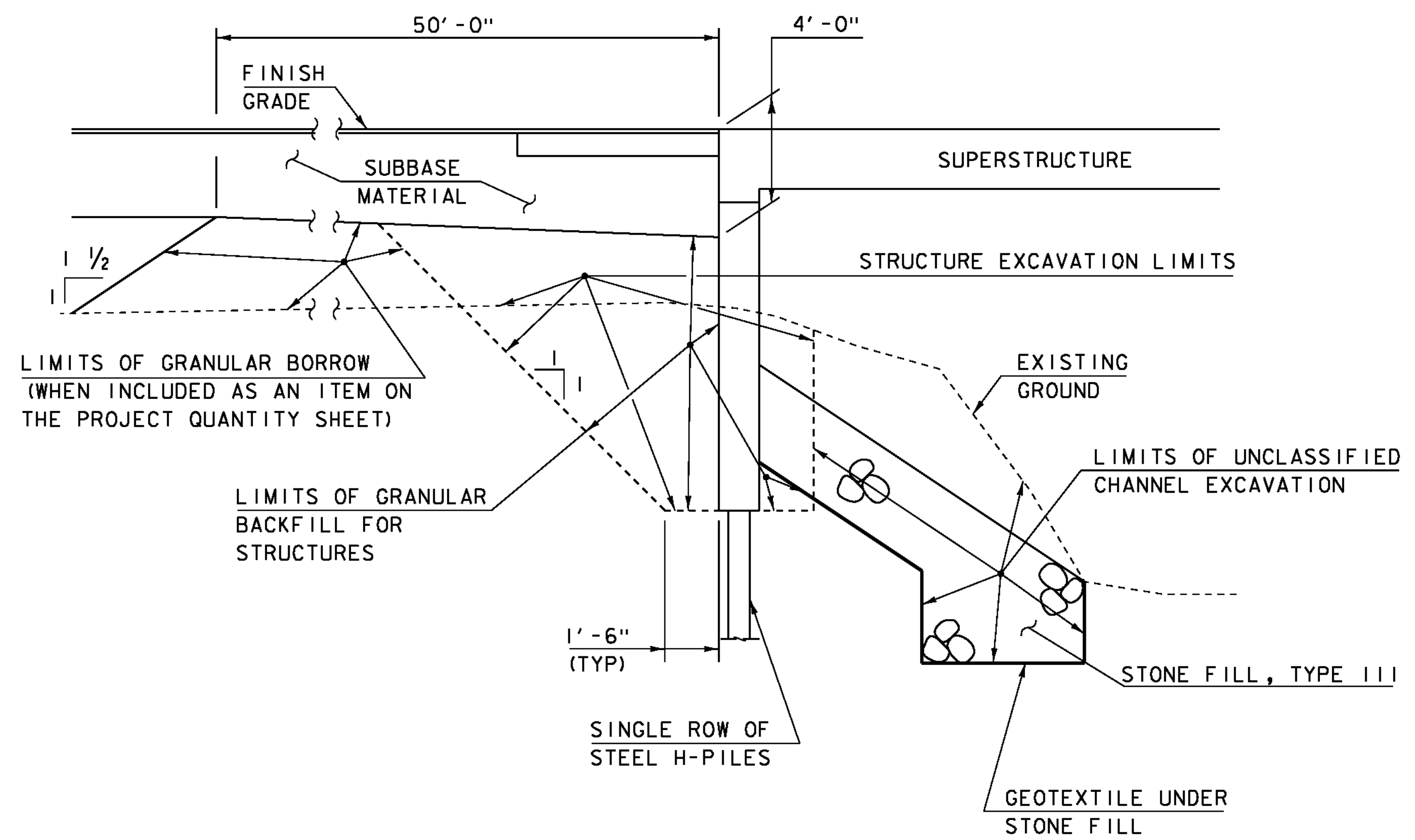


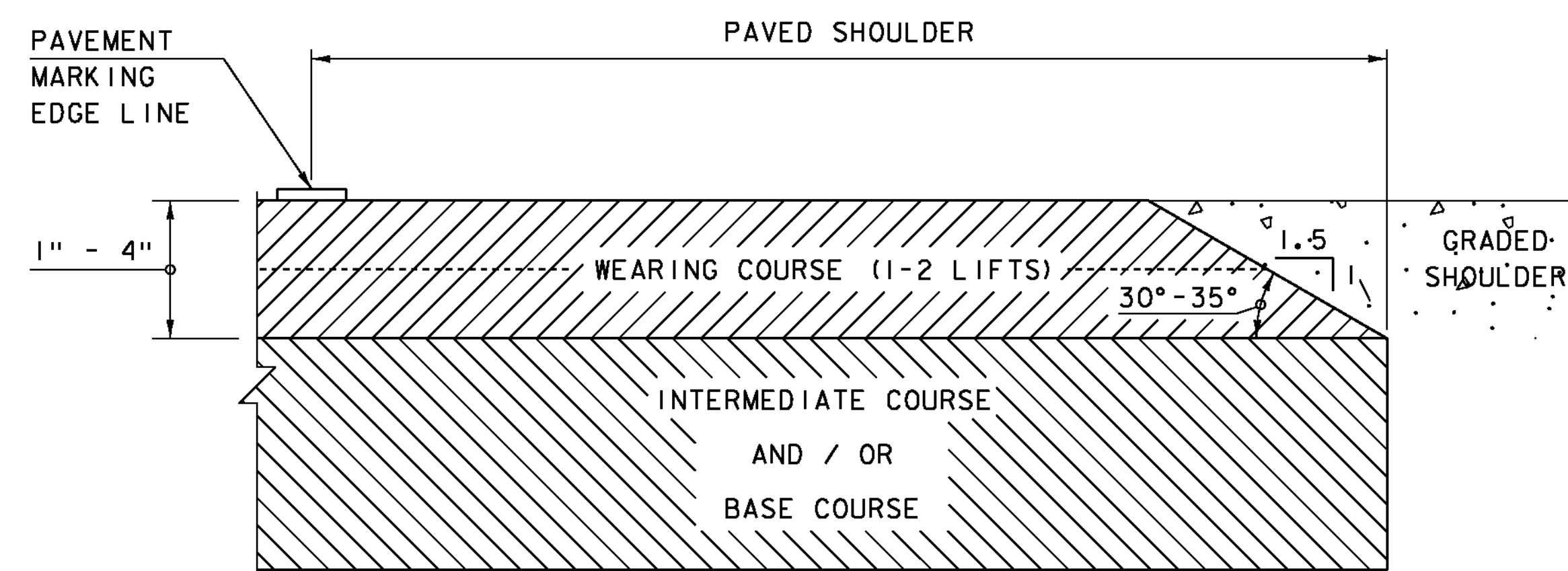
TYPICAL CHANNEL SECTION
NOT TO SCALE

*GRUBBING MATERIAL SHALL NOT BE PLACED ON THE STONE FILL IN THE AREA UNDER THE BRIDGE. WHENEVER CHANNEL SLOPE INTERSECTS ROADWAY SUBBASE, GRUBBING MATERIAL SHALL BEGIN AT THE BOTTOM OF SUBBASE.



TYPICAL INTEGRAL ABUTMENT SECTION
NOT TO SCALE

ACTUAL LIMITS OF STRUCTURE EXCAVATION SHALL BE DETERMINED BY THE CONTRACTOR. HOWEVER, ONLY EXCAVATION BETWEEN THE LIMITS SHOWN WILL BE PAID FOR UNDER ITEM 204.25 "STRUCTURE EXCAVATION". EXCAVATION BY THE CONTRACTOR OUTSIDE OF THESE LIMITS WILL BE AT THE EXPENSE OF THE CONTRACTOR.



SAFETY EDGE DETAIL
NOT TO SCALE

NOTE: LEVELING COURSE MAY INCLUDE THE "SAFETY EDGE" AT THE CONTRACTOR'S CHOICE.

PROJECT NAME: BRIGHTON
PROJECT NUMBER: ER STP 034-3(25)

FILE NAME: s1b208typ.dgn
PROJECT LEADER: K.HIGGINS
DESIGNED BY: J. SALVATORI
TYPICAL SECTIONS 2

PLOT DATE: 12-SEP-2012
DRAWN BY: J. SALVATORI
CHECKED BY: W. LAMMER
SHEET 7 OF 36