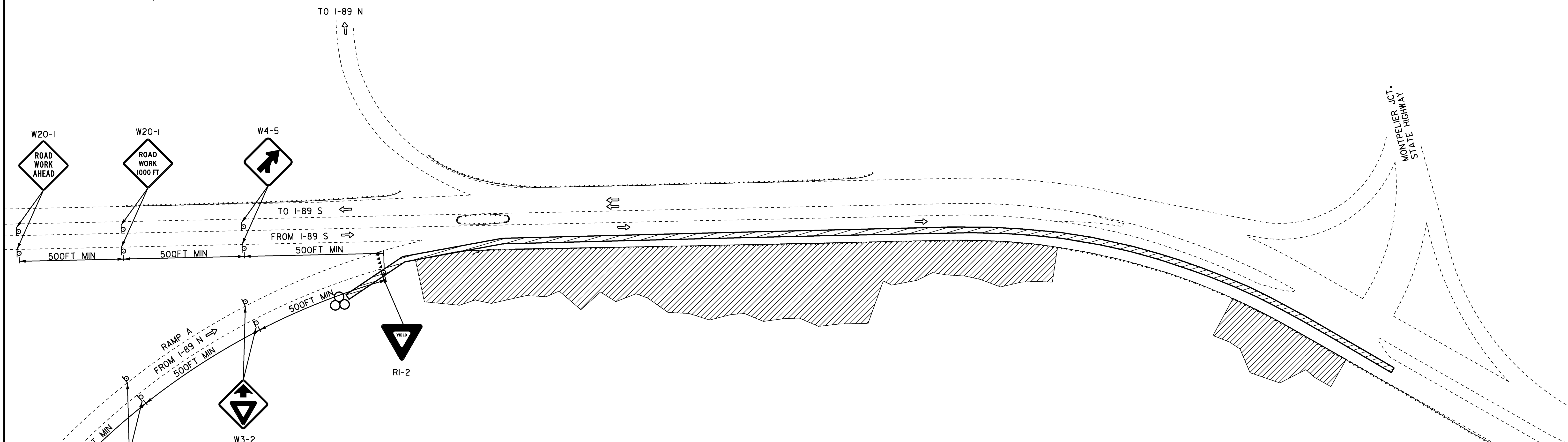
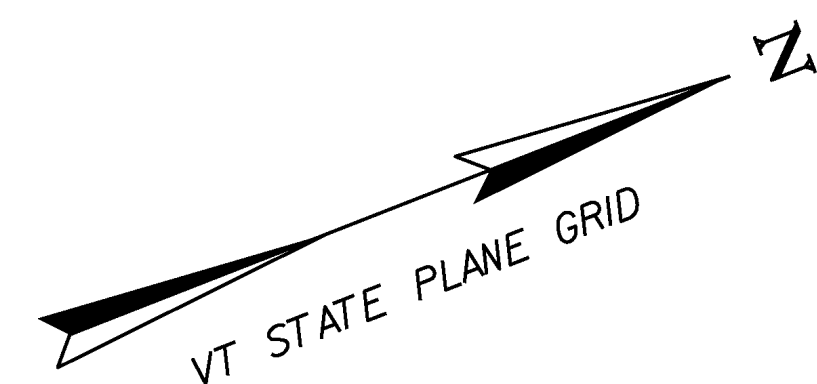


LEGEND

- ⇒ FLOW OF TRAFFIC
- RETROREFLECTIVE PLASTIC DRUM
- ▨ TEMPORARY TRAFFIC BARRIER
- ▩ WORK AREA
- ⊗ ENERGY ABSORPTION ATTENUATOR (IF NEEDED)

621.90 TEMPORARY TRAFFIC BARRIER
 RAMP A STA 211+25 TO RAMP A STA 225+90 RT



POSTED SPEED (MPH)	TAPER LENGTHS (FT)		TANGENT W=12 FT (L/2)	BARRIER FLARE RATE (MINIMUM)	MINIMUM BUFFER SPACE LENGTH (FT)	MAXIMUM CHANNELIZING DEVICE SPACING (FT)	
	SHOULDER W=10 FT (L/3)	MERGING 12 FT LANE (L)				TAPER (S)	TANGENT (2S)
≤ 40	90	320	160	1:9	305	40	80
45	150	540	270	1:9	360	45	90
50	170	600	300	1:11	425	50	100
55	185	660	330	1:13	495	55	110
60	200	720	360	1:13	570	60	120
65	215	780	390	1:13	645	65	130

- NOTES:**
1. SEE SHEET 52 & 53 FOR TEMPORARY TRAFFIC CONTROL NOTES.
 2. SIGNS DETERMINED TO NOT BE APPLICABLE SHALL BE COVERED DURING TIMES THEY ARE NON-APPLICABLE.
 3. A MINIMUM OF AN ELEVEN FOOT LANE WIDTH SHALL BE MAINTAIN AT ALL TIMES.
 4. THE CONTRACTOR SHALL PROVIDE A BLASTING TRAFFIC CONTROL PLAN FOR APPROVAL PRIOR TO ANY BLASTING ACTIVITIES.

PROJECT NAME: MONTPELIER	PLOT DATE: 24-MAY-2013
PROJECT NUMBER: NH 028-2(9)	DRAWN BY: I. SHEA
FILE NAME: IIB066/DESIGN/DIB066TRF.DGN	CHECKED BY: A. BOMBARDIER
PROJECT LEADER: P. PELOQUIN	SHEET 54 OF 62
DESIGNED BY: P. PELOQUIN	
TRAFFIC CONTROL SHEET 1	