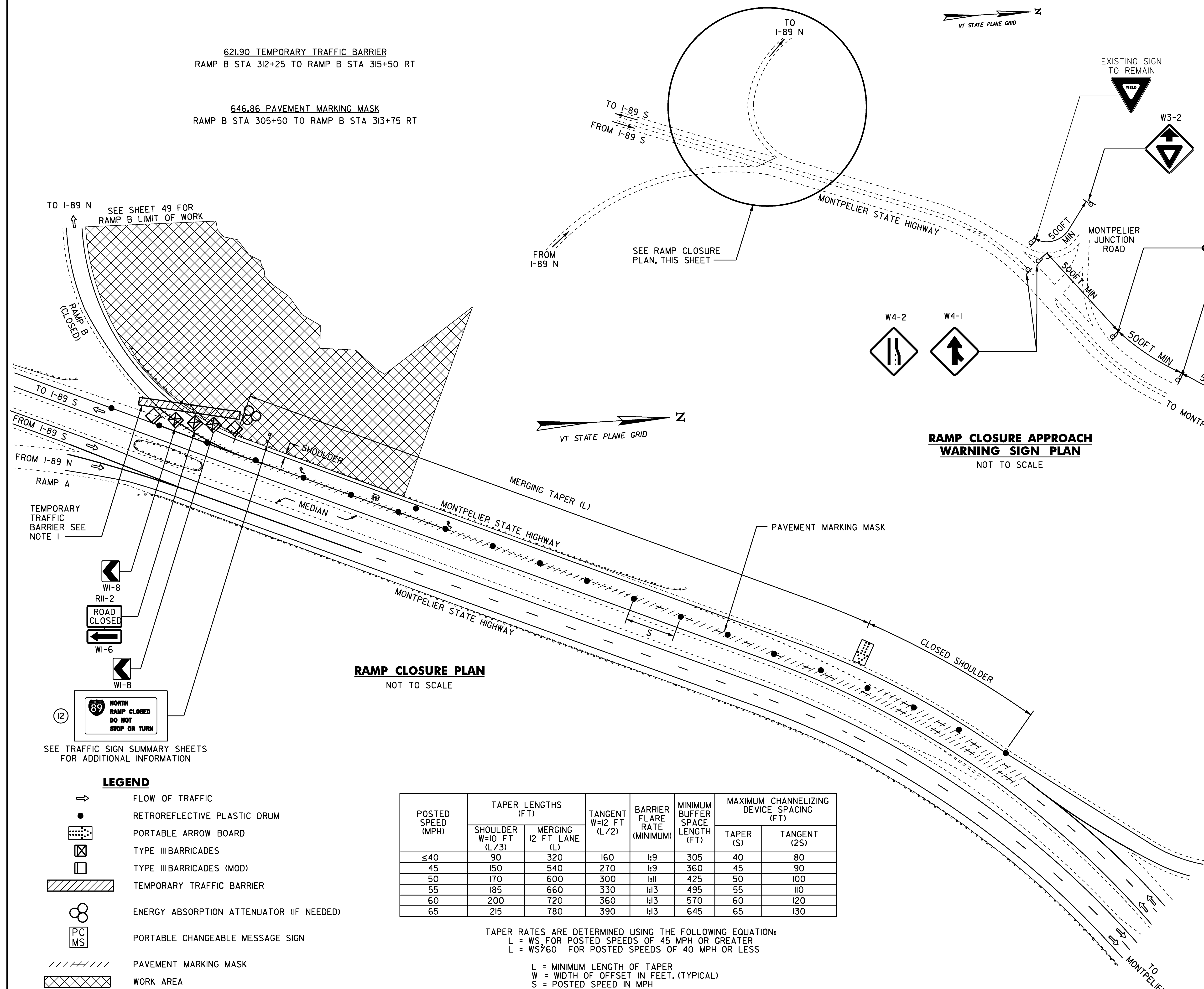


621.90 TEMPORARY TRAFFIC BARRIER
RAMP B STA 312+25 TO RAMP B STA 315+50 RT

646.86 PAVEMENT MARKING MASK
RAMP B STA 305+50 TO RAMP B STA 313+75 RT



RAMP CLOSURE PLAN
NOT TO SCALE

**RAMP CLOSURE APPROACH
WARNING SIGN PLAN**
NOT TO SCALE

NOTES:

1. LOCATE THE END OF THE TEMPORARY TRAFFIC BARRIER SO THAT THE EXISTING STEEL BEAM GUARDRAIL CAN BE BOLTED TO THE END OF THE BARRIER. IF IT IS NOT POSSIBLE TO FASTEN THE BARRIER TO THE EXISTING ROADWAY GUARDRAIL, AN ENERGY ABSORPTION ATTENUATOR SHALL BE LOCATED AT THE END OF THE BARRIER. COST OF ATTACHING TEMPORARY TRAFFIC BARRIER TO THE STEEL BEAM GUARDRAIL AND COSTS FOR DISMANTLING BARRIER CONNECTION AND RESTORING EXISTING BARRIER TO ORIGINAL CONFIGURATION WILL BE INCIDENTAL TO ITEM 621.90 TEMPORARY TRAFFIC BARRIER. ANY DAMAGED EXISTING STEEL BEAM GUARDRAIL CAUSED BY CONNECTING IT TO THE BARRIER SHALL BE REPLACED AT THE CONTRACTOR'S EXPENSE.
2. IN AREAS WHERE THE END OF THE TEMPORARY TRAFFIC BARRIER CANNOT BE PLACED OUTSIDE OF THE CLEARZONE, THERE SHALL BE AN ENERGY ABSORPTION ATTENUATOR ADDED TO THE END. A QUANTITY OF 2 EA, 621.56 ENERGY ABSORPTION ATTENUATOR HAS BEEN ADDED TO THE PLANS FOR THOSE CIRCUMSTANCES. IEA FOR THE LOCATION, AND IEA FOR THE REPLACEMENT IN CASE OF A CRASH.
3. ALL SIGN ITEMS FOR RAMP CLOSURE INCLUDING INSTALLING, REMOVING AND COVERING SIGNS SHALL BE INCLUDED IN THE CONTRACT BID PRICE FOR ITEM 641.10, TRAFFIC CONTROL.
4. SHEE SHEET 52 FOR ADDITIONAL TRAFFIC CONTROL NOTES.

SEE TRAFFIC SIGN SUMMARY SHEETS FOR ADDITIONAL INFORMATION

LEGEND

- FLOW OF TRAFFIC
- RETROREFLECTIVE PLASTIC DRUM
- ▨ PORTABLE ARROW BOARD
- ▣ TYPE III BARRICADES
- ▤ TYPE III BARRICADES (MOD)
- ▩ TEMPORARY TRAFFIC BARRIER
- ENERGY ABSORPTION ATTENUATOR (IF NEEDED)
- PCMS PORTABLE CHANGEABLE MESSAGE SIGN
- //// PAVEMENT MARKING MASK
- ▩ WORK AREA

POSTED SPEED (MPH)	TAPER LENGTHS (FT)		TANGENT W=12 FT (L/2)	BARRIER FLARE RATE (MINIMUM)	MINIMUM BUFFER SPACE LENGTH (FT)	MAXIMUM CHANNELIZING DEVICE SPACING (FT)	
	SHOULDER W=10 FT (L/3)	MERGING 12 FT LANE (L)				TAPER (S)	TANGENT (2S)
≤40	90	320	160	1:9	305	40	80
45	150	540	270	1:9	360	45	90
50	170	600	300	1:11	425	50	100
55	185	660	330	1:13	495	55	110
60	200	720	360	1:13	570	60	120
65	215	780	390	1:13	645	65	130

TAPER RATES ARE DETERMINED USING THE FOLLOWING EQUATION:
 $L = WS$ FOR POSTED SPEEDS OF 45 MPH OR GREATER
 $L = WS^2/60$ FOR POSTED SPEEDS OF 40 MPH OR LESS
 L = MINIMUM LENGTH OF TAPER
 W = WIDTH OF OFFSET IN FEET. (TYPICAL)
 S = POSTED SPEED IN MPH

PROJECT NAME: MONTPELIER
 PROJECT NUMBER: NH 028-2(9)
 FILE NAME: d11b066trf.dgn
 PROJECT LEADER: P. PELOQUIN
 DESIGNED BY: P. PELOQUIN
 RAMP B DETOUR SHEET 3
 PLOT DATE: 24-MAY-2013
 DRAWN BY: P. PELOQUIN
 CHECKED BY: A. BOMBARDIER
 SHEET 53 OF 62