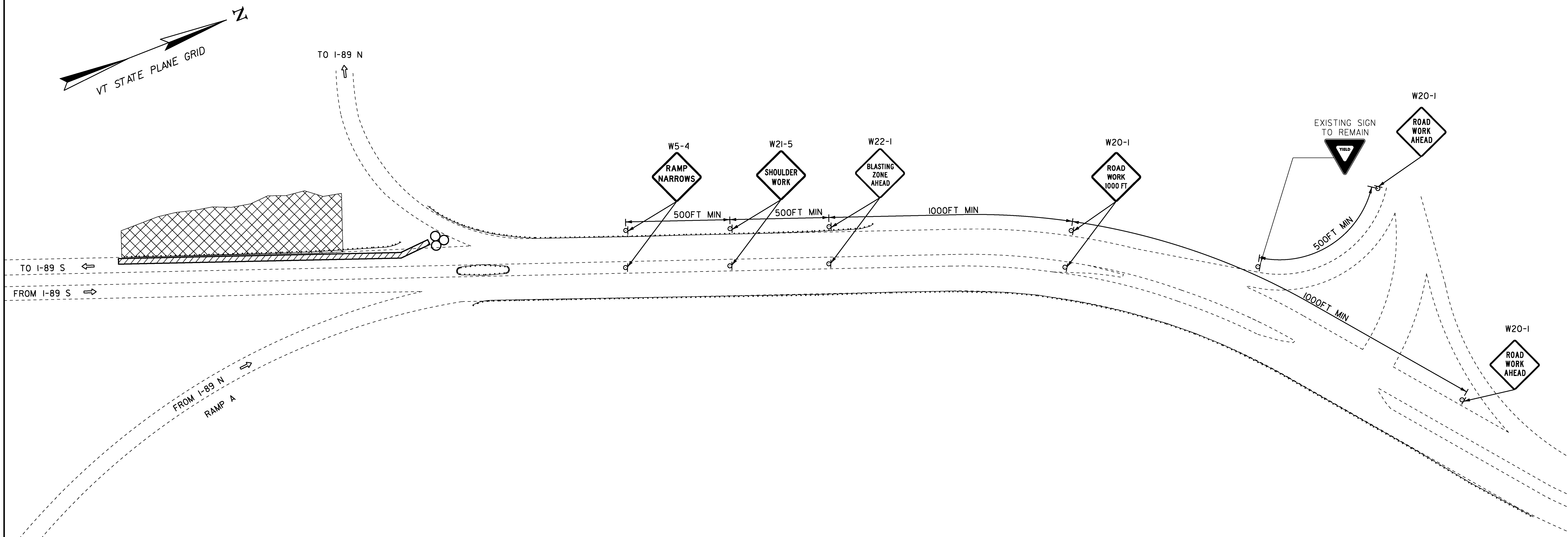


LEGEND

- ⇒ FLOW OF TRAFFIC
- RETROREFLECTIVE PLASTIC DRUM
- ▨ TEMPORARY TRAFFIC BARRIER
- ▩ WORK AREA
- ⊗ ENERGY ABSORPTION ATTENUATOR (IF NEEDED)

621.90 TEMPORARY TRAFFIC BARRIER
MSH STA 101+75 TO MSH STA 106+00 LT



POSTED SPEED (MPH)	TAPER LENGTHS (FT)		TANGENT W=12 FT (L/2)	BARRIER FLARE RATE (MINIMUM)	MINIMUM BUFFER SPACE LENGTH (FT)	MAXIMUM CHANNELIZING DEVICE SPACING (FT)	
	SHOULDER W=10 FT (L/3)	MERGING 12 FT LANE (L)				TAPER (S)	TANGENT (2S)
≤ 40	90	320	160	1:9	305	40	80
45	150	540	270	1:9	360	45	90
50	170	600	300	1:11	425	50	100
55	185	660	330	1:13	495	55	110
60	200	720	360	1:13	570	60	120
65	215	780	390	1:13	645	65	130

NOTES:
1. SEE SHEET 52 & 53 FOR TEMPORARY TRAFFIC CONTROL NOTES.

PROJECT NAME: MONTPELIER
PROJECT NUMBER: NH 028-2(9)
FILE NAME: IIB066/DESIGN/DIB056TRF.DGN PLOT DATE: 24-MAY-2013
PROJECT LEADER: P. PELOQUIN DRAWN BY: P. PELOQUIN
DESIGNED BY: P. PELOQUIN CHECKED BY: A. BOMBARDIER
TRAFFIC CONTROL SHEET 2 SHEET 55 OF 62