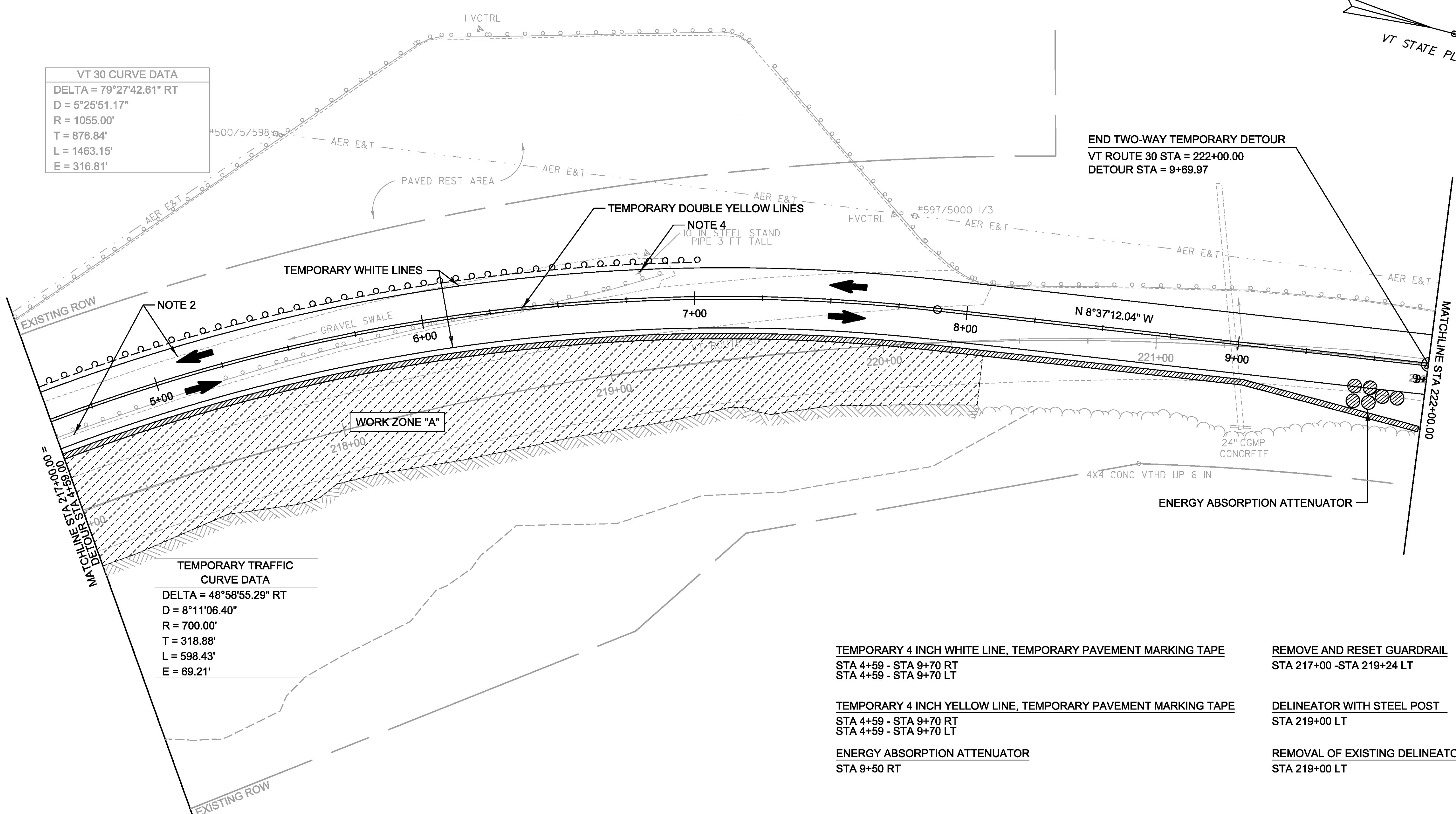
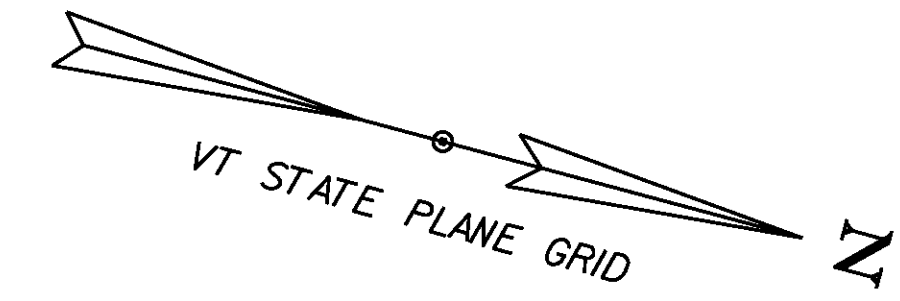


VT 30 CURVE DATA	
DELTA =	79°27'42.61" RT
D =	5°25'51.17"
R =	1055.00'
T =	876.84'
L =	1463.15'
E =	316.81'

TEMPORARY TRAFFIC CURVE DATA	
DELTA =	48°58'55.29" RT
D =	8°11'06.40"
R =	700.00'
T =	318.88'
L =	598.43'
E =	69.21'

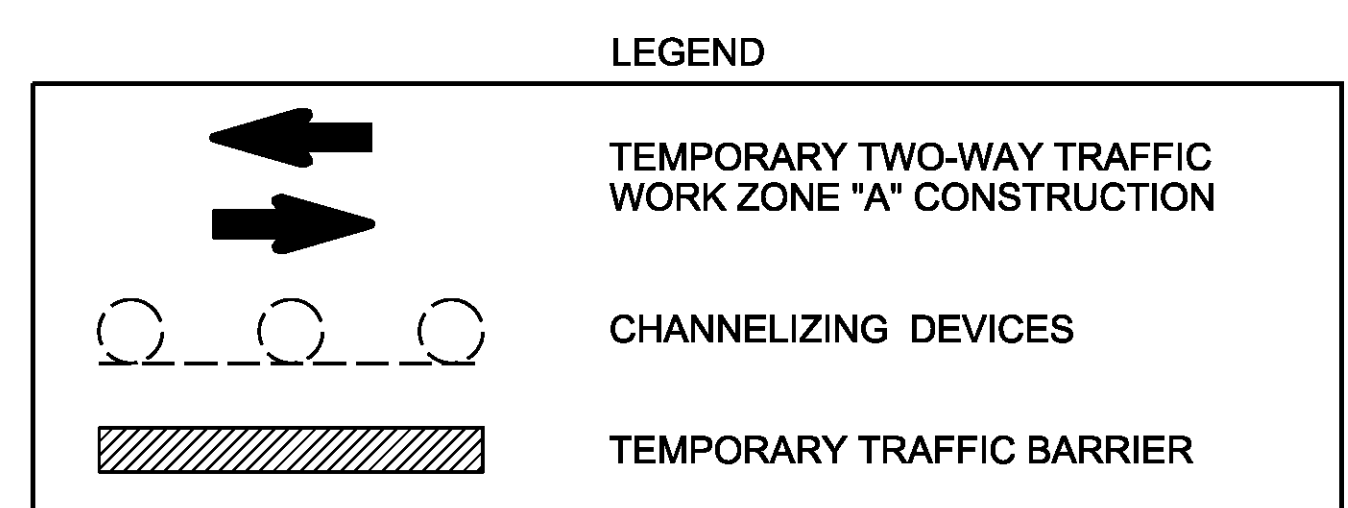
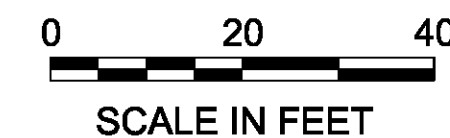


END TWO-WAY TEMPORARY DETOUR  
 VT ROUTE 30 STA = 222+00.00  
 DETOUR STA = 9+69.97

MATCHLINE STA 222+00.00

- TEMPORARY 4 INCH WHITE LINE, TEMPORARY PAVEMENT MARKING TAPE  
 STA 4+59 - STA 9+70 RT  
 STA 4+59 - STA 9+70 LT
- TEMPORARY 4 INCH YELLOW LINE, TEMPORARY PAVEMENT MARKING TAPE  
 STA 4+59 - STA 9+70 RT  
 STA 4+59 - STA 9+70 LT
- ENERGY ABSORPTION ATTENUATOR  
 STA 9+50 RT
- REMOVE AND RESET GUARDRAIL  
 STA 217+00 - STA 219+24 LT
- DELINEATOR WITH STEEL POST  
 STA 219+00 LT
- REMOVAL OF EXISTING DELINEATOR  
 STA 219+00 LT

- NOTES:
- REMOVE AND RESET GUARDRAIL FOR TEMPORARY TRAFFIC PHASING.
  - PLACE TEMPORARY PAVEMENT WITHIN GRAVEL SWALE FOR TEMPORARY TRAFFIC PHASING. REMOVE TEMPORARY PAVEMENT, RESTORE GRAVEL SWALE UPON COMPLETION OF THE WORK ASSOCIATED WITHIN THE LIMITS OF "WORK ZONE A". REFER TO THE PROJECT DETAILS FOR MORE INFORMATION.
  - MAINTAIN DUAL ACCESS TO RESERVOIR OVERLOOK PARKING AREA DURING CONSTRUCTION.
  - REMOVE 3'X10" VERTICAL STEEL STAND PIPE AT VT 30 STA 219+14 LT. PAYMENT FOR REMOVAL SHALL BE INCIDENTAL TO CONTRACT ITEM 641.10 "TRAFFIC CONTROL".



PROJECT NAME:	TOWNSHEND	FILE NAME:	d11b050n1.dgn	PLOT DATE:	1/9/2015
PROJECT NUMBER:	STP 015-1(22)	PROJECT LEADER:	K. UPMAL	DRAWN BY:	C. LEACH
		DESIGNED BY:	C. LEACH	CHECKED BY:	B. KIPP
		TRAFFIC CONTROL SHEET 2		SHEET	33 OF 34