

STEEL BEAM GUARDRAIL, GALVANIZED
STA 280+25 - 283+25 LT

ANCHOR FOR STEEL BEAM RAIL
STA 283+12 LT

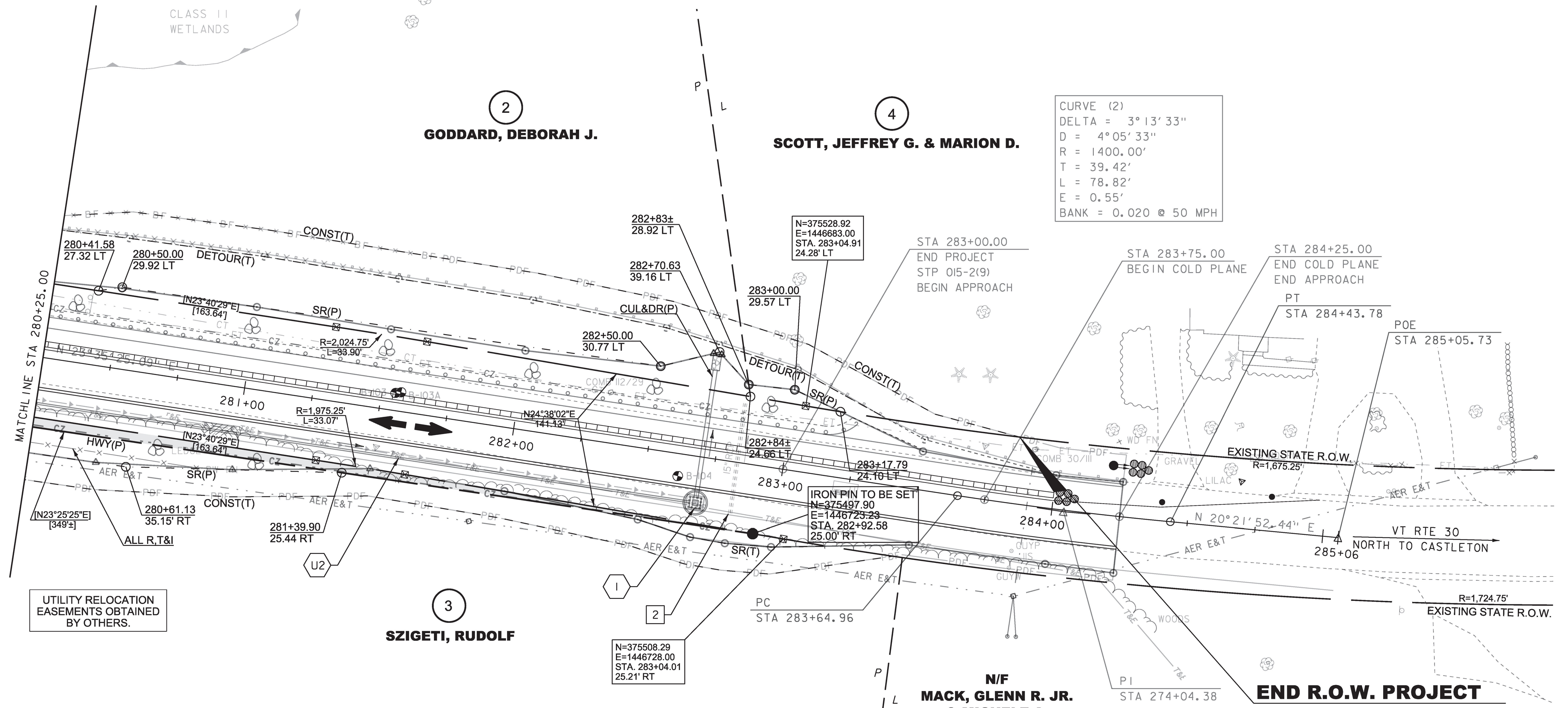
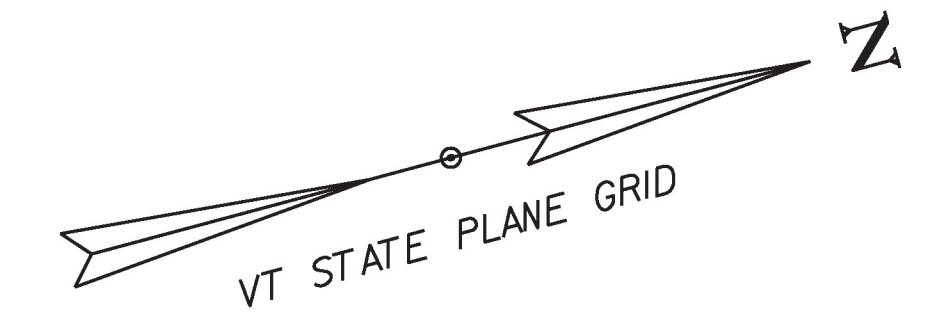
AGGREGATE SHOULDER
STA 280+25 LT - STA 284+25 LT
STA 280+25 RT - STA 282+72 RT

YIELDING MARKER POST
STA 282+70 RT

REMOVAL OF EXISTING FENCE
STA 280+25 - 280+87 RT

STONE FILL, TYPE II
STA 280+25 LT - STA 283+25 LT
STA 280+25 RT - STA 282+73 RT

SPECIAL PROVISION (REINFORCED SOIL SLOPE)
STA 280+25 - 283+13 LT



CURVE (2)
DELTA = 3° 13' 33"
D = 4° 05' 33"
R = 1400.00'
T = 39.42'
L = 78.82'
E = 0.55'
BANK = 0.020 @ 50 MPH

UTILITY RELOCATION
EASEMENTS OBTAINED
BY OTHERS.

**FOR R.O.W.
USE ONLY**

EXISTING DRAINAGE
2 STA 282+83 C/L
REMOVE EXISTING 15" RCP

NEW DRAINAGE
1 STA 282+70 C/L
NEW 18" X 48' CPEP PIPE WITH
NEW PRCCB W/GRATE TYPE B AT STA
282+70 RT STONE FILL, TYPE II
PAD AT OUTLET (L=6', W=3', D=2')

8-INCH UNDERDRAIN
U2 STA 280+25 - 282+70 RT
NEW 8" X 245' UNDERDRAIN
W/FLUSHING BASIN AT 280+25 RT

**END R.O.W. PROJECT
POULTNEY STP 015-2(9)
STA. 283+85, 24.58' LT**

LINES SHOWN ON THIS PLAN AS EXISTING
PROPERTY LINES P/L ARE BELIEVED TO
BE ACCURATE BUT SHOULD NOT BE RELIED
UPON FOR PURPOSES UNRELATED TO THE
STATE OF VERMONT'S ACQUISITION OF LAND
AND RIGHTS FOR THIS PROJECT.



PROJECT NAME: POULTNEY	PLOT DATE: 23-AUG-2018
PROJECT NUMBER: STP 015-2(9)	DRAWN BY: A. PROULX
FILE NAME: rlib048lay2.dgn	CHECKED BY: R. CLOUTIER
DESIGNED BY: S. ZWICK	SHEET 18 OF 48
R.O.W. LAYOUT SHEET 2 OF 2	