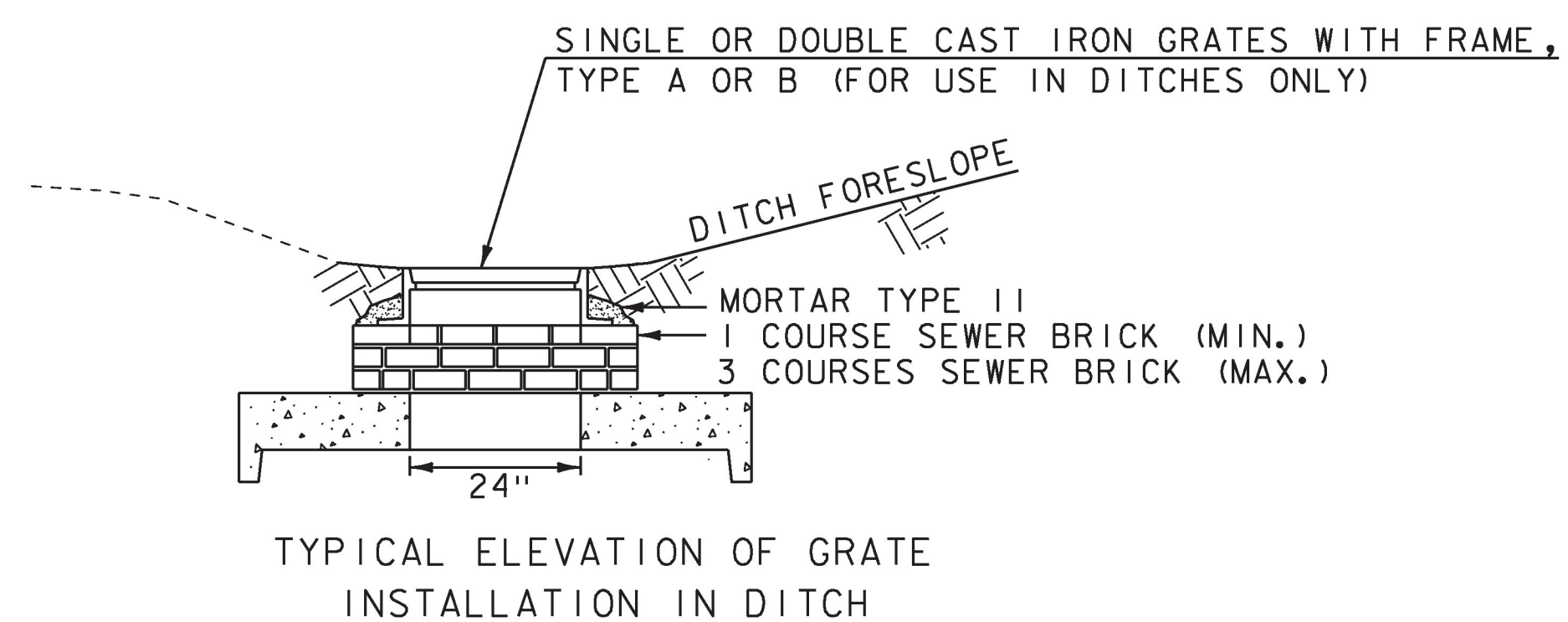
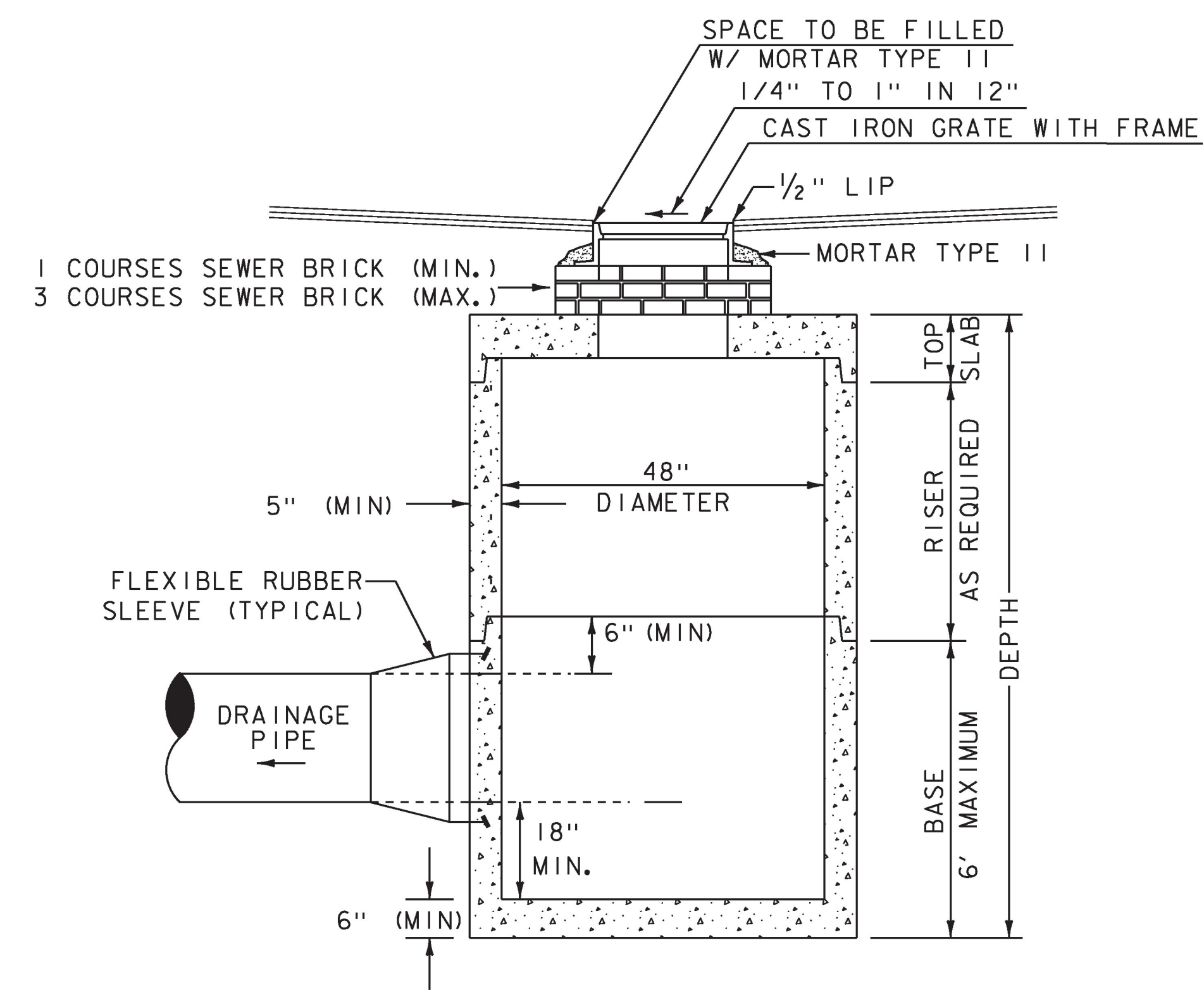


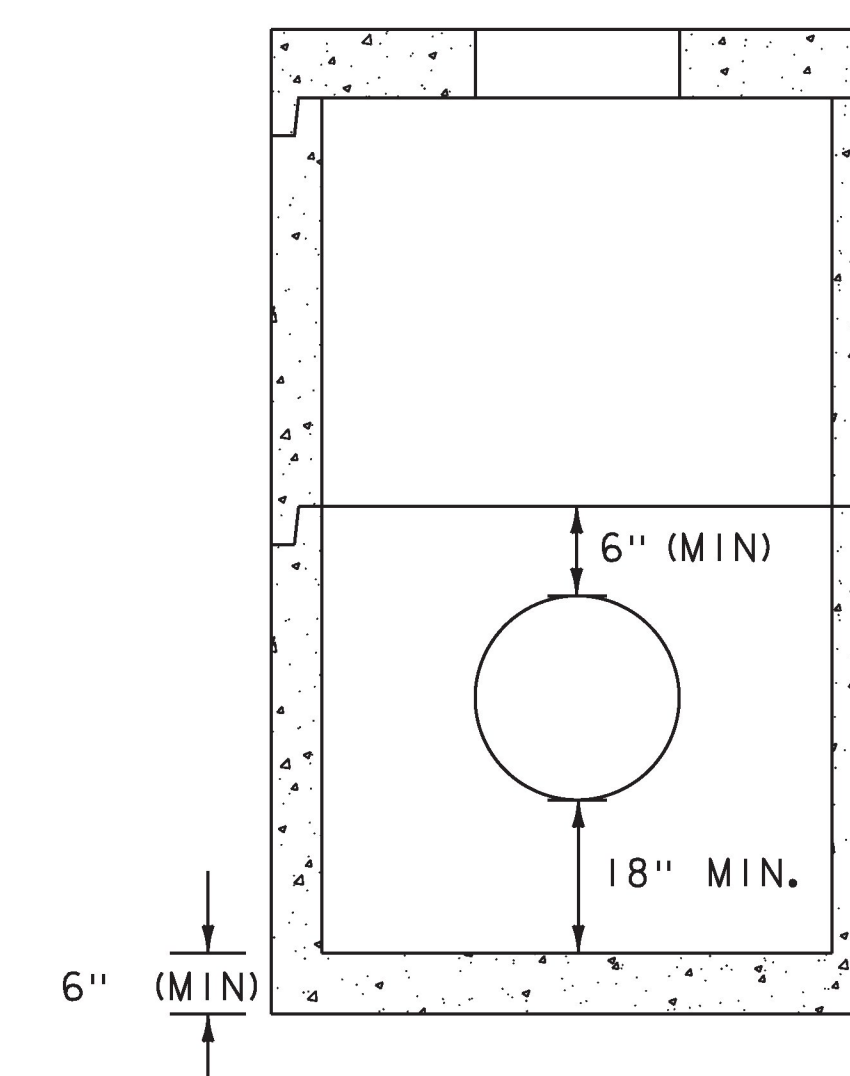
SINGLE GRATE CATCH BASIN
PLAN VIEW W/ UNDERDRAIN



TYPICAL ELEVATION OF GRATE
INSTALLATION IN DITCH



ELEVATION VIEW



SIDE VIEW

TYPICAL PRECAST REINFORCED CATCH BASIN
WITH CAST IRON GRATE

PRECAST REINFORCED CONCRETE CATCH BASIN WITH CAST IRON GRATE:

- 1) PRECAST CONCRETE SECTIONS SHALL CONFORM TO THE STANDARD SPECIFICATIONS AND ASTM C-478.
- 2) MINIMUM CONCRETE COMPRESSIVE STRENGTH: 5,000 PSI AT 28-DAYS
- 3) STEEL REINFORCING SHALL CONFORM TO ASTM A185 OR A82 FOR HS-25 LOADING.
- 4) STEPS SHALL BE 16" WIDE STEEL REINFORCED COPOLYMER POLYPROPYLENE PLASTIC CONFORMING TO ASTM C-478 AND SHALL BE CAST INTO MANHOLE SECTIONS BY THE PRECAST CONCRETE MANUFACTURER.
- 5) FACE OF PIPE SHALL NOT PROJECT MORE THAN TWO INCHES OR LESS THAN ONE INCH FROM INSIDE WALL OF STRUCTURE.
- 6) ALL STRUCTURES WITH MULTIPLE PIPES SHALL HAVE A MINIMUM OF 12" OF OUTSIDE SURFACE BETWEEN HOLES, NO MORE THAN 75% OF A HORIZONTAL CROSS-SECTION SHALL BE HOLES, AND THERE SHALL BE NO HOLES CLOSER THAN THREE INCHES TO JOINTS.
- 7) FITTING FRAME TO FINAL GRADE MAY BE DONE WITH BRICK OR PRECAST CONCRETE GRADE RINGS MEETING ASTM C-478 OF APPROPRIATE THICKNESS (THREE COURSES MAX) WILL BE CONSIDERED INCIDENTAL TO ITEM 604.20 PRECAST REINFORCED CONCRETE CATCH BASIN WITH CAST IRON GRATE (TYPE A).
- 8) FLAT SLAB TOPS SHALL BE USED FOR ALL CATCH BASINS UNLESS OTHERWISE PERMITTED BY THE ENGINEER.
- 9) ALL PIPE INVERTS AND PENETRATION ANGLES SHALL BE FIELD VERIFIED PRIOR TO PRECASTING.
- 10) PRECAST SECTIONS SHALL HAVE A TONGUE AND GROOVE JOINT AND BE ASSEMBLED USING A BUTYL RUBBER OR EQUAL SEALANT, AS APPROVED BY THE ENGINEER.
- 11) PROVIDE FLEXIBLE RUBBER SLEEVES CONFORMING TO ASTM C-923, RESILIENT, OF SIZE REQUIRED, FOR EACH PIPE CONNECTING TO STRUCTURE. SLEEVES SHALL EITHER BE SNAP-IN-PLACE BOOTS PROVIDED BY THE MANUFACTURER OR CAST INTO PRECAST STRUCTURE BY THE FABRICATOR FOR ALL PIPE PENETRATIONS.
- 12) PAYMENT FOR INSTALLATION OF THE CATCH BASINS SHALL BE MADE UNDER ITEM 604.20 PRECAST REINFORCED CONCRETE CATCH BASIN WITH CAST IRON GRATE (TYPE A).

SHEET NOT TO SCALE

PROJECT NAME: POULTNEY	PLOT DATE: 23-AUG-2018
PROJECT NUMBER: STP 015-2(9)	DRAWN BY: S. ZWICK
FILE NAME: dl1b048frm.dgn	DESIGNED BY: S. ZWICK
PROJECT LEADER: K. UPMAL	CHECKED BY: C. LEACH
DRAINAGE DETAIL SHEET 1	SHEET 5 OF 48