

BRIDGE 107

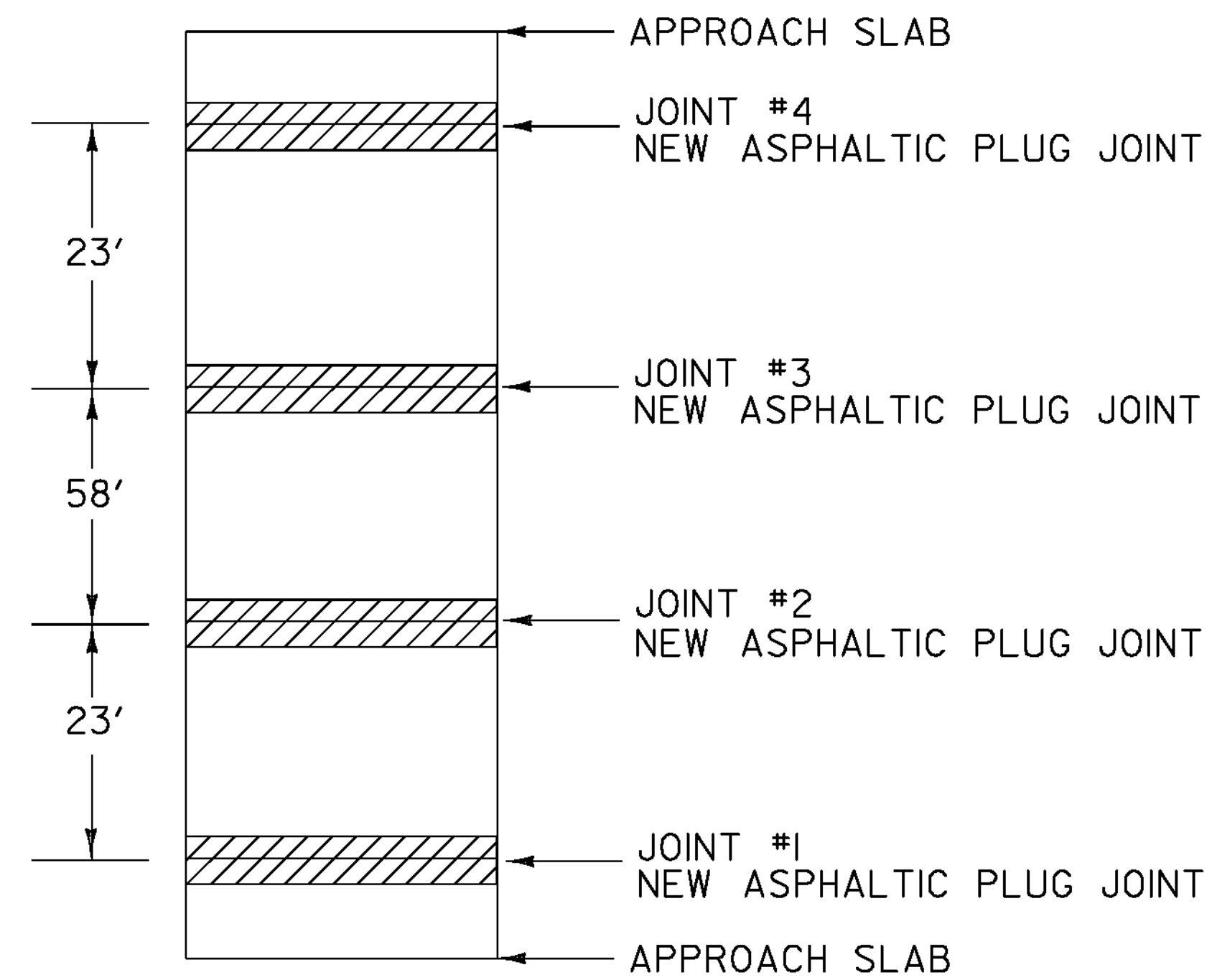
MM 6.538 (ST. JOHNSBURY)

LENGTH OF ASPHALTIC PLUG JOINTS:

JOINT #1 - 4'

JOINT #2 - 4'

TOTAL = 82'



BRIDGE 108

MM 7.199 (ST. JOHNSBURY)

LENGTH OF ASPHALTIC PLUG JOINTS:

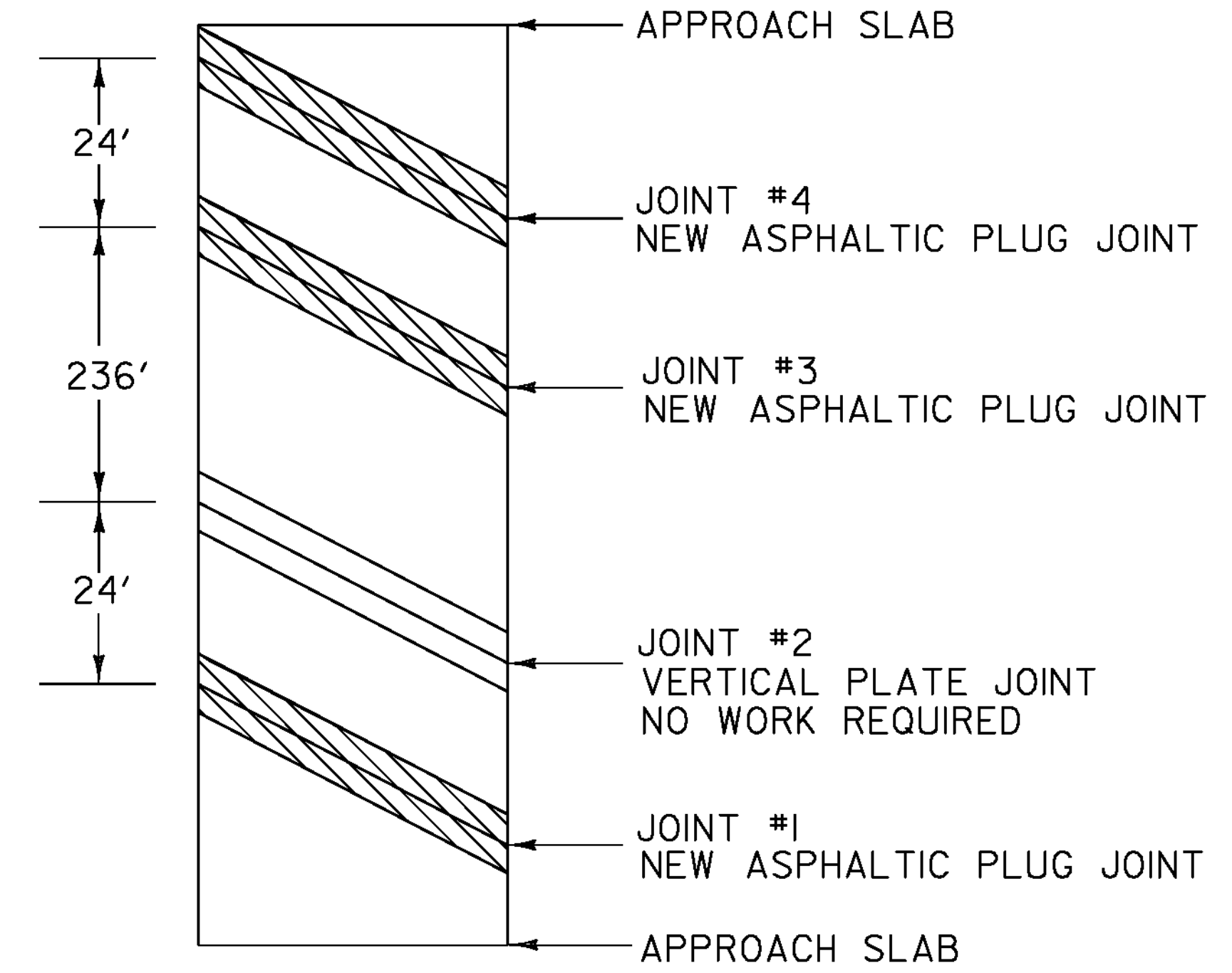
JOINT #1 - 30'

JOINT #2 - 30'

JOINT #3 - 30'

JOINT #4 - 30'

TOTAL = 120'



BRIDGE 117

MM 4.271 (CONCORD)

LENGTH OF ASPHALTIC PLUG JOINTS:

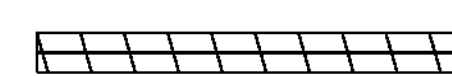
JOINT #1 - 45'

JOINT #3 - 45'

JOINT #4 - 45'

TOTAL = 135'

LEGEND



EXISTING BRIDGE JOINTS TO BE
REPAIRED WITH ASPHALTIC PLUG JOINT

NOT TO SCALE

**BRIDGE
DETAIL
SHEET**

PROJECT NAME:	ST. JOHNSBURY - GUILDHALL
PROJECT NUMBER:	NH SURF (32)
FILE NAME:	11b032\p11b032.dgn
PROJECT LEADER:	FOWLER
DESIGNED BY:	LOCKE
IPARM FILE NAME:	p11b032_19.1
PLOT DATE:	03-FEB-2012
DRAWN BY:	LOCKE
CHECKED BY:	PAVT MGMT
SHEET	19 OF 22