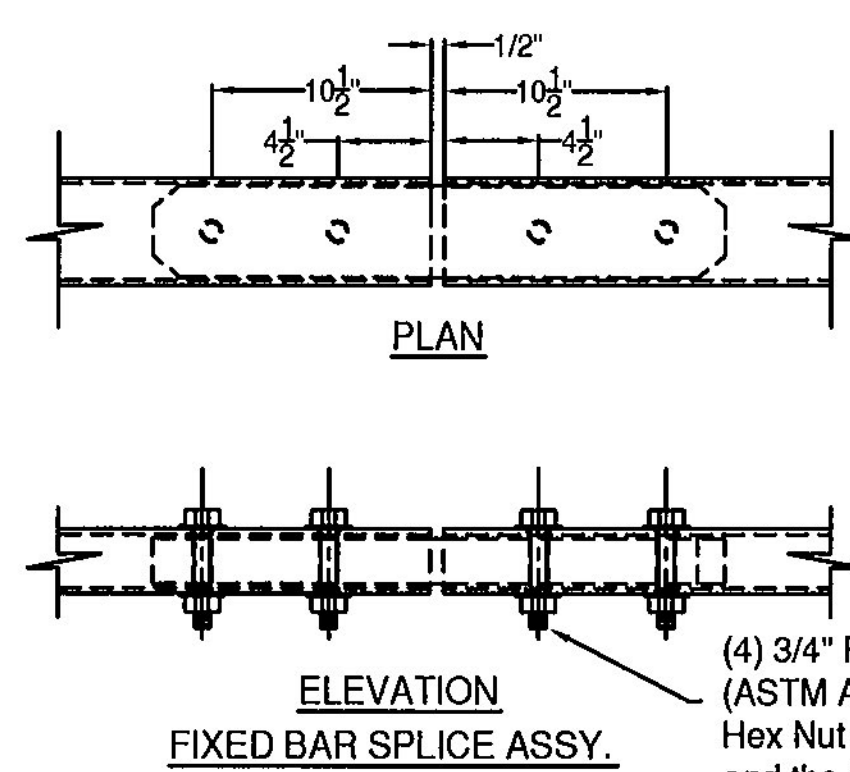
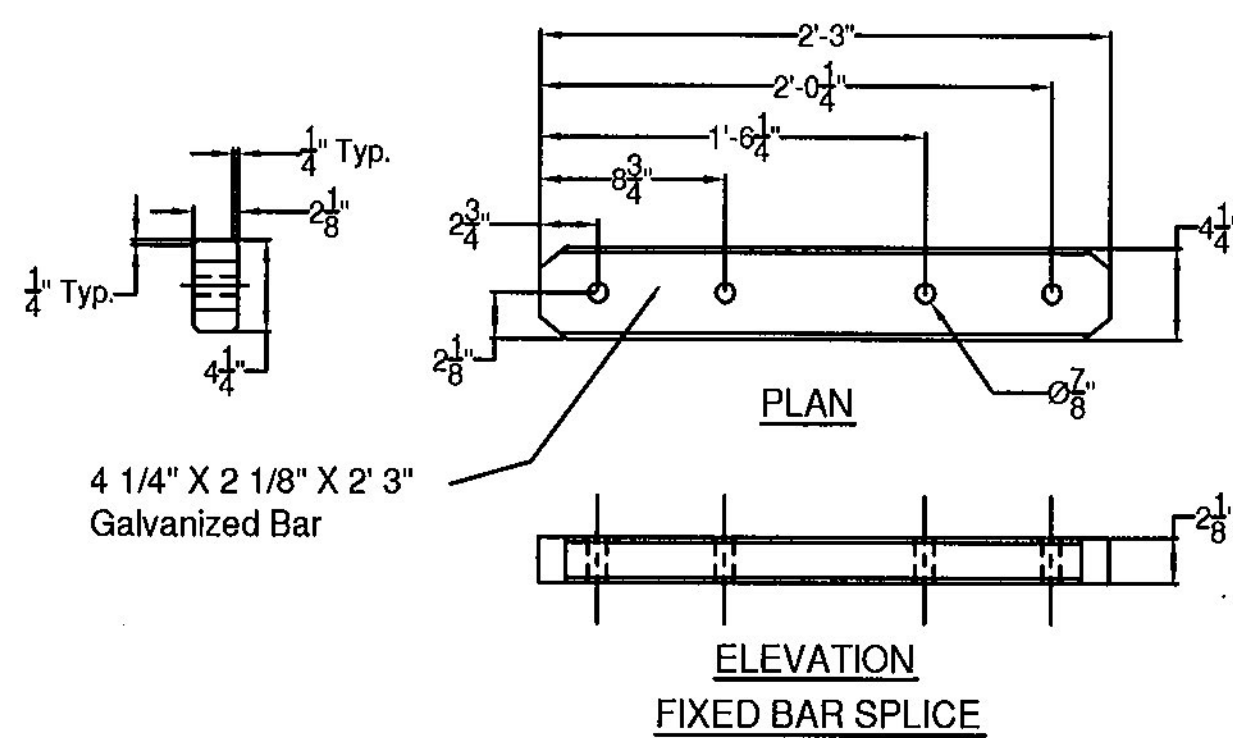
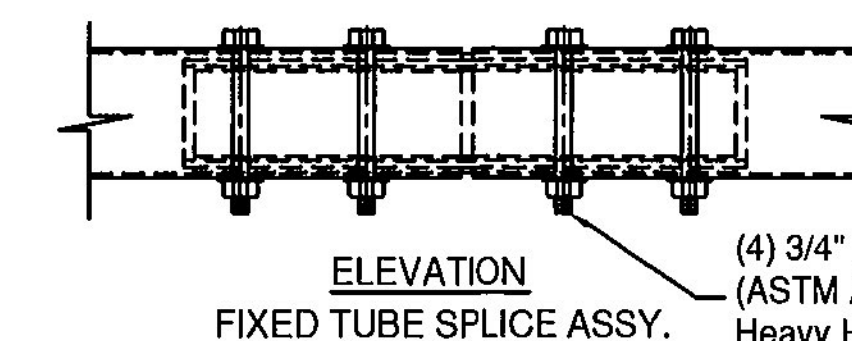
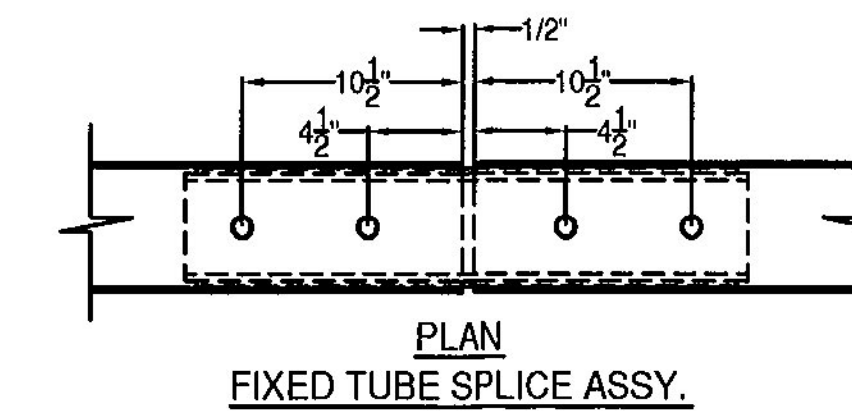
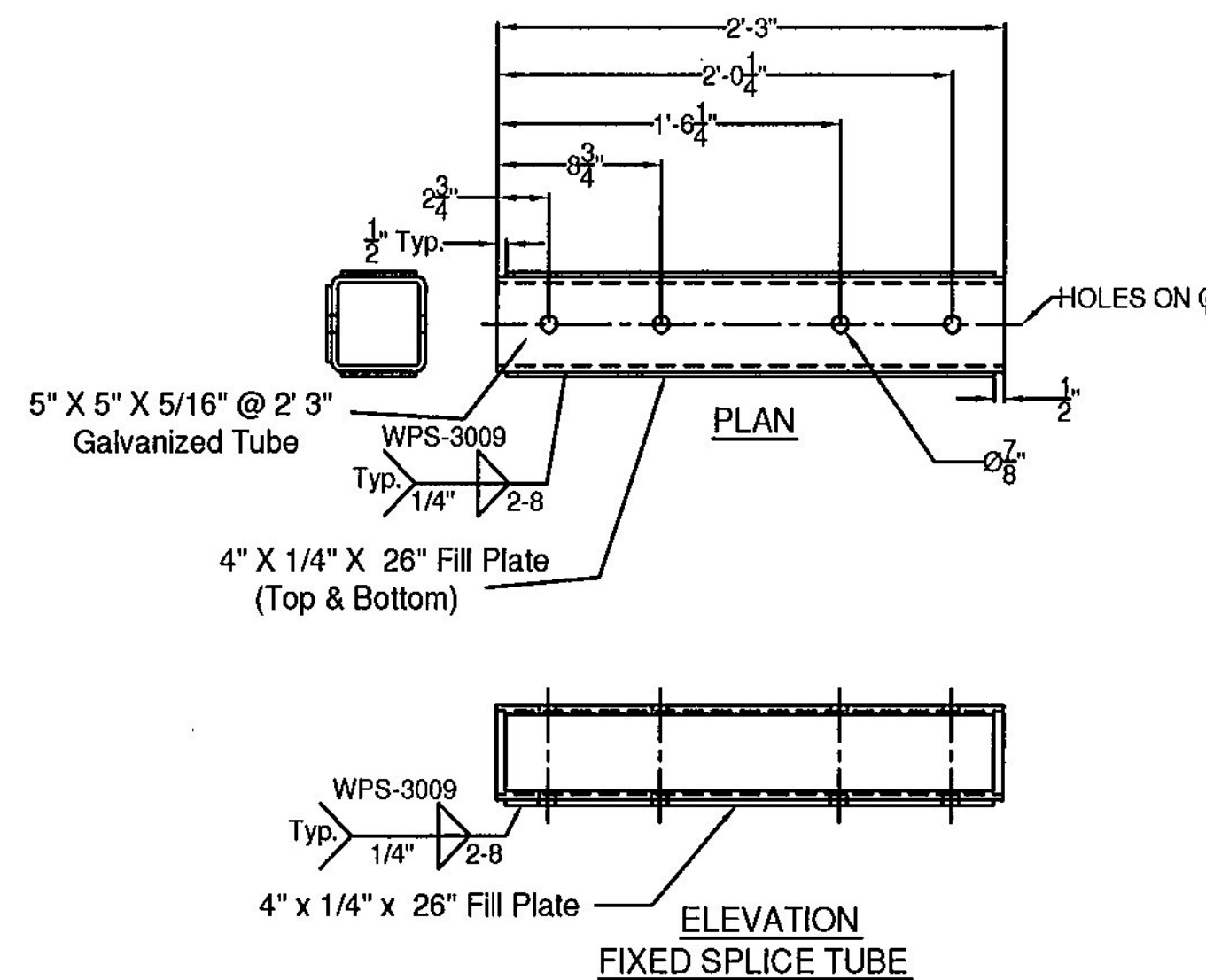


**SPLICE BAR - FIXED**

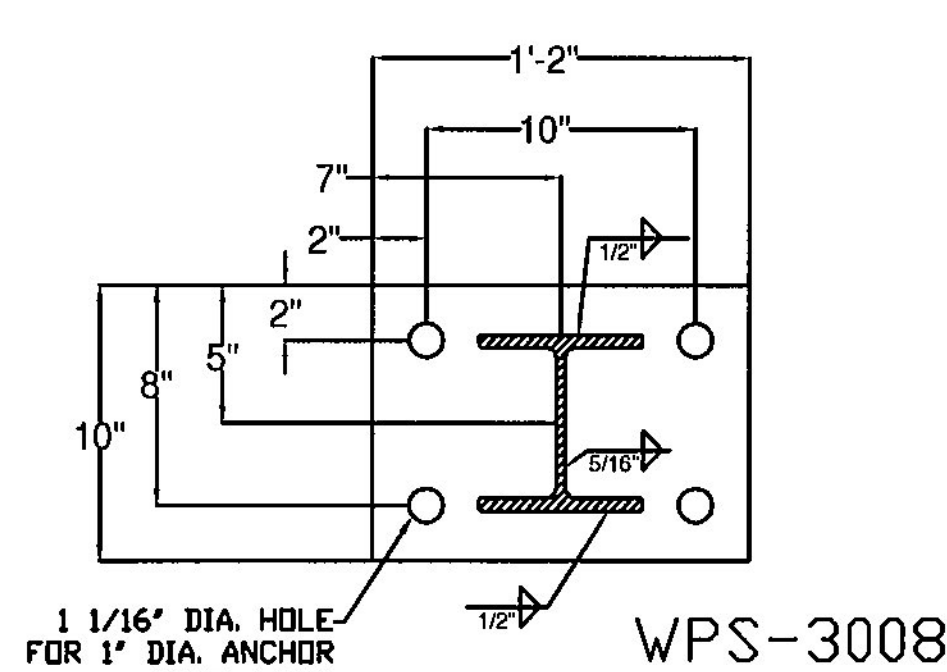


(4) 3/4" Fully Threaded Bolts, 4 1/2" Long (ASTM A325, TYPE 1) 2 Washers and a Heavy Hex Nut on each Bolt. Nut to be Finger Tight and the First Thread below the nut to be damaged A.O.B.E.. 4 Bolts at Each Splice.

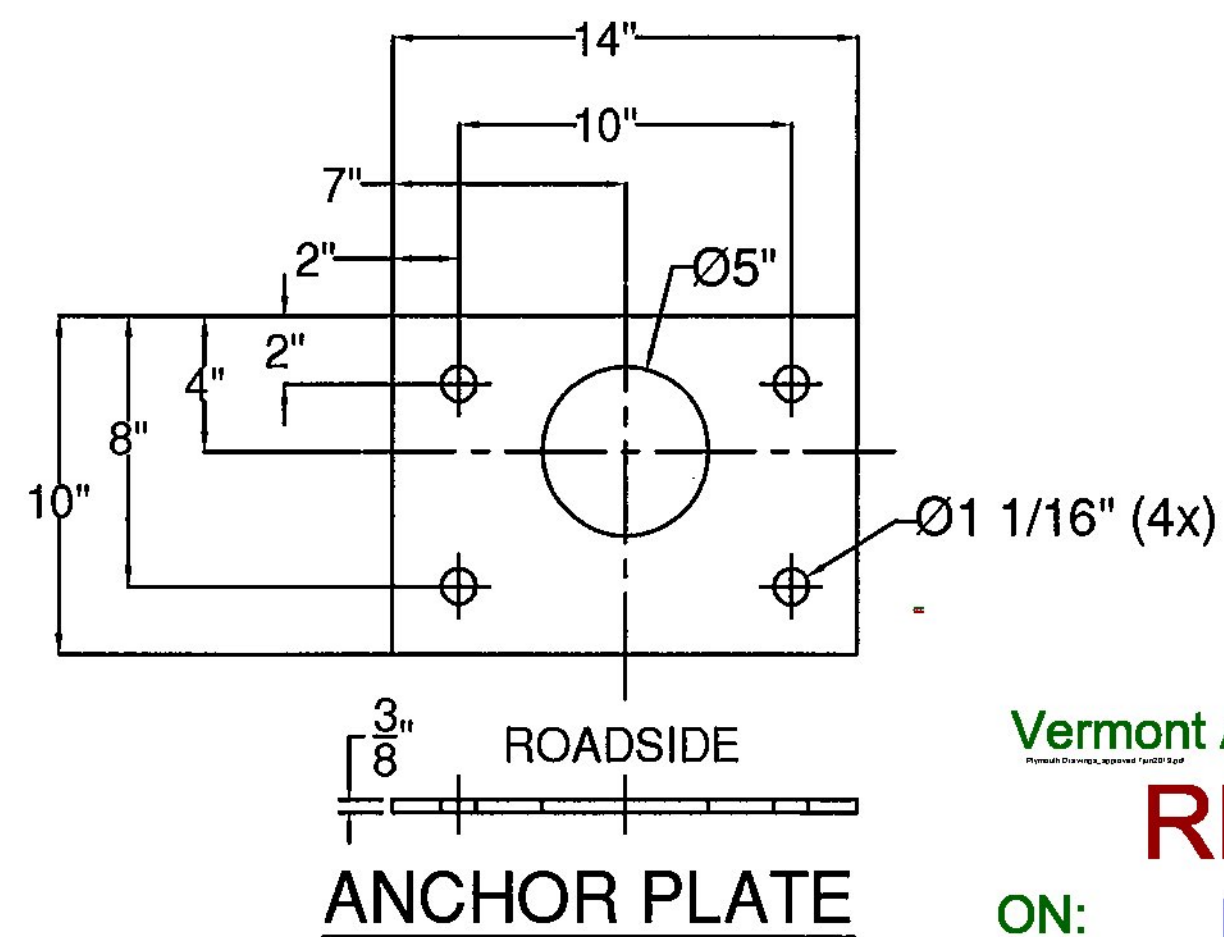


(4) 3/4" Fully Threaded Bolts, 7 1/2" Long (ASTM A325, TYPE 1) 2 Washers and a Heavy Hex Nut on each Bolt. Nut to be Finger Tight and the First Thread below the nut to be damaged A.O.B.E.. 4 Bolts at Each Splice.

**SPLICE TUBE - FIXED**

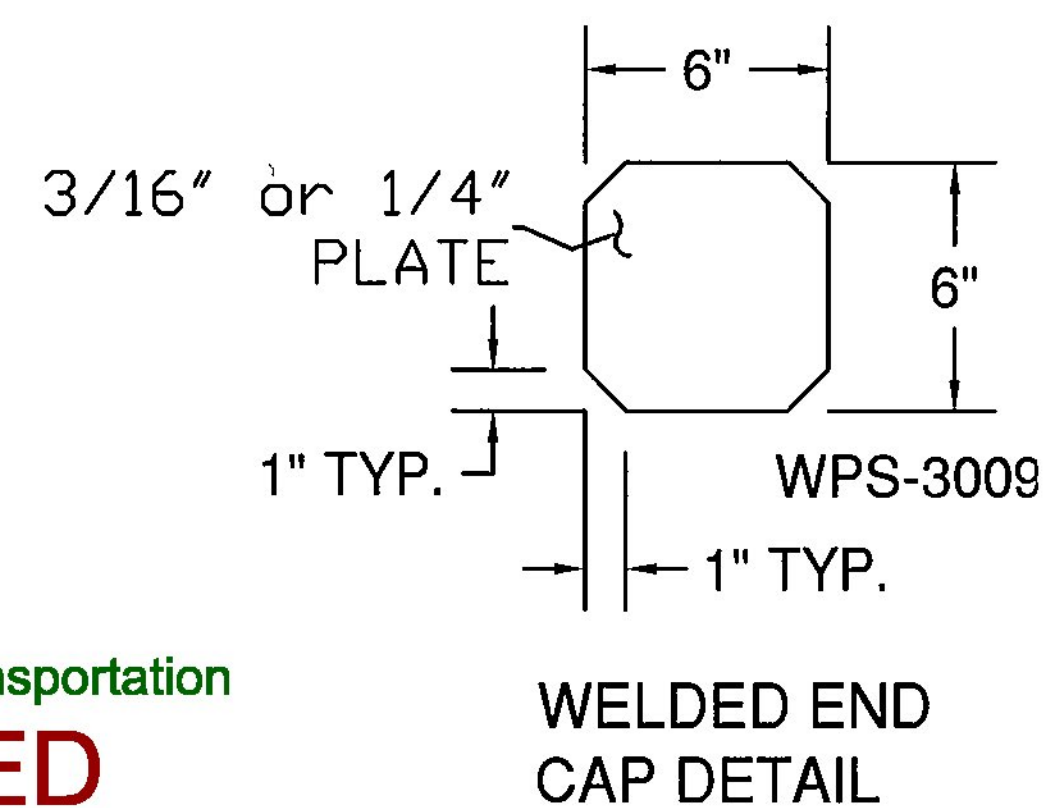


WPS-3008

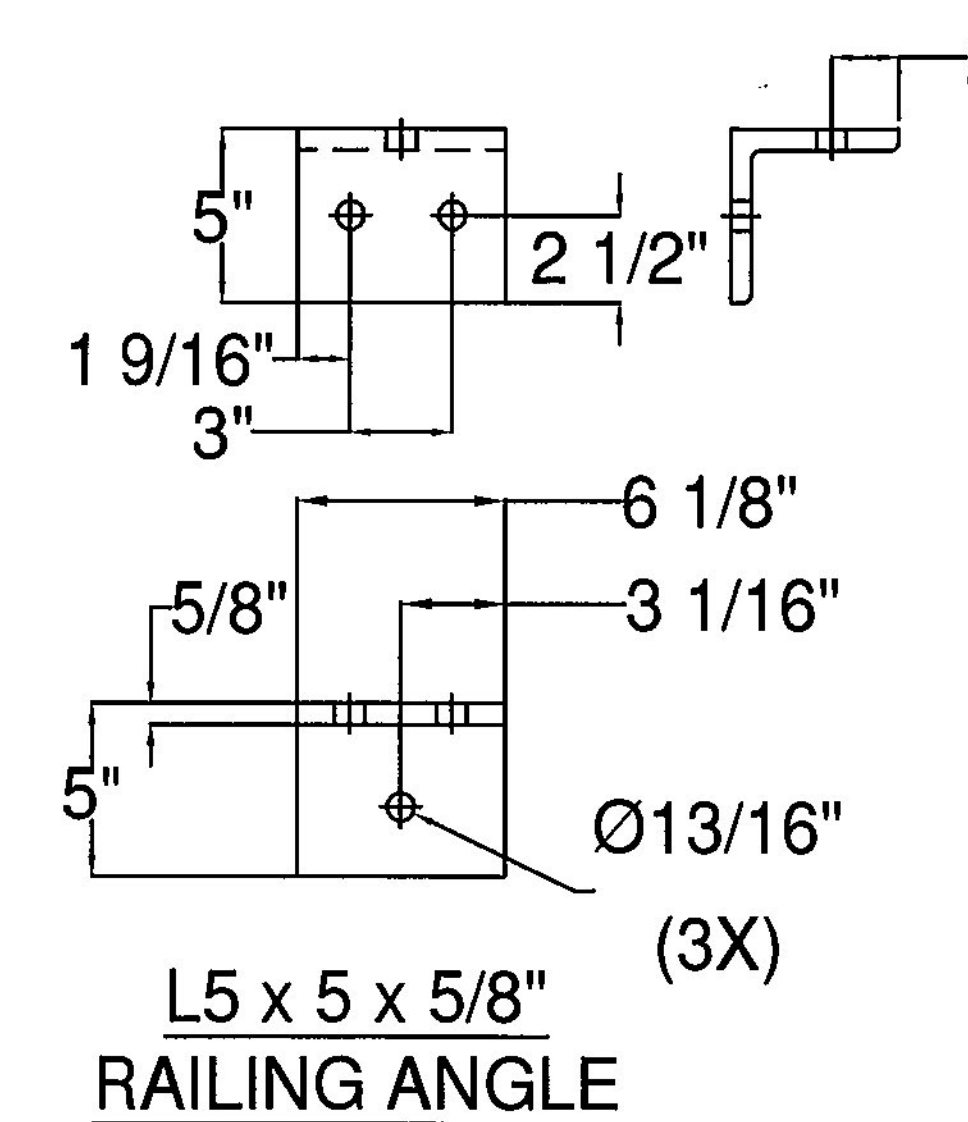


ROADSIDE ANCHOR PLATE

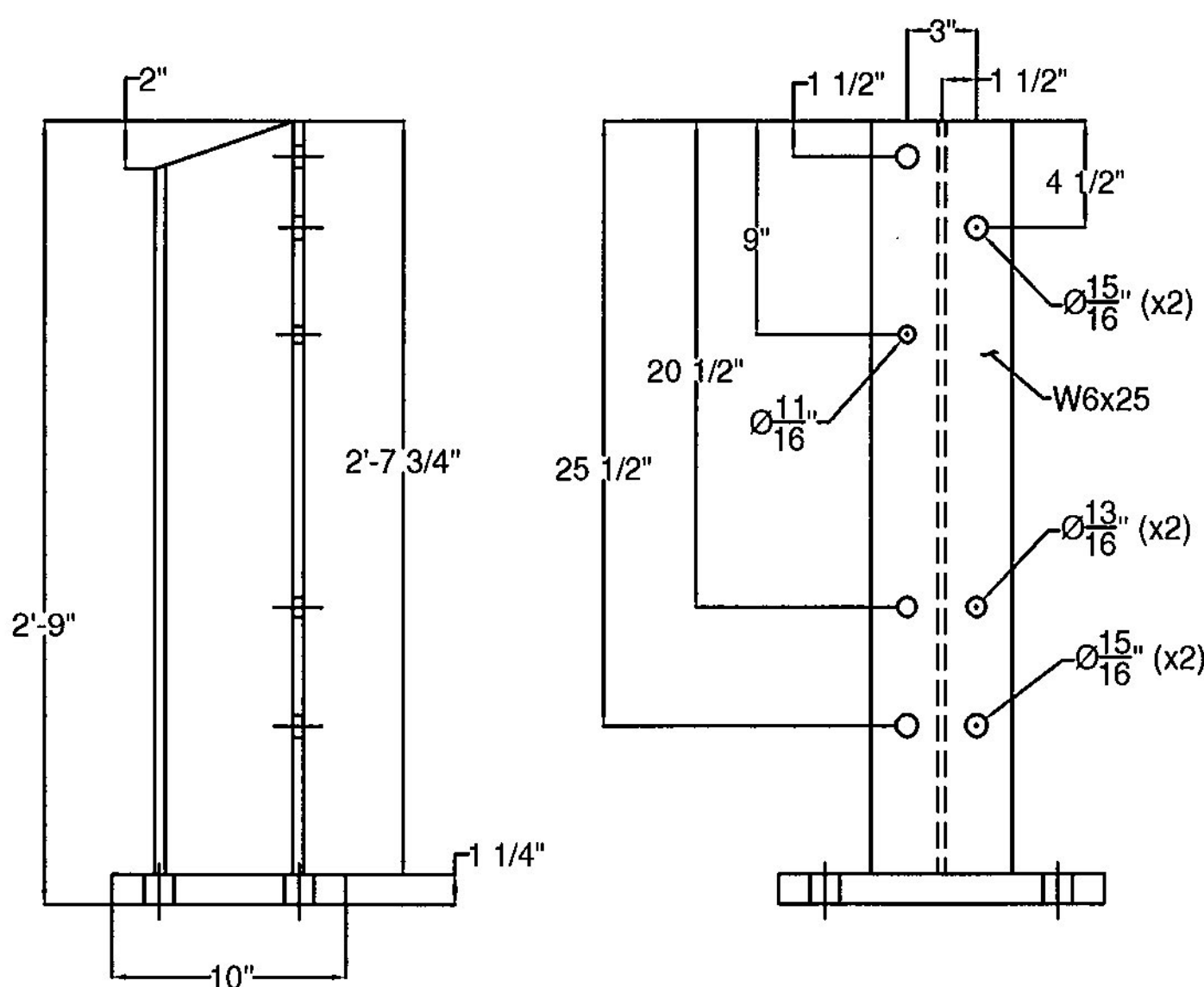
Vermont Agency of Transportation  
**RECEIVED**  
 ON: May 7, 2013  
 and Checked for  
**CONFORMANCE**  
 BY: Rob Young DATE: 06/07/2013



WELDED END CAP DETAIL



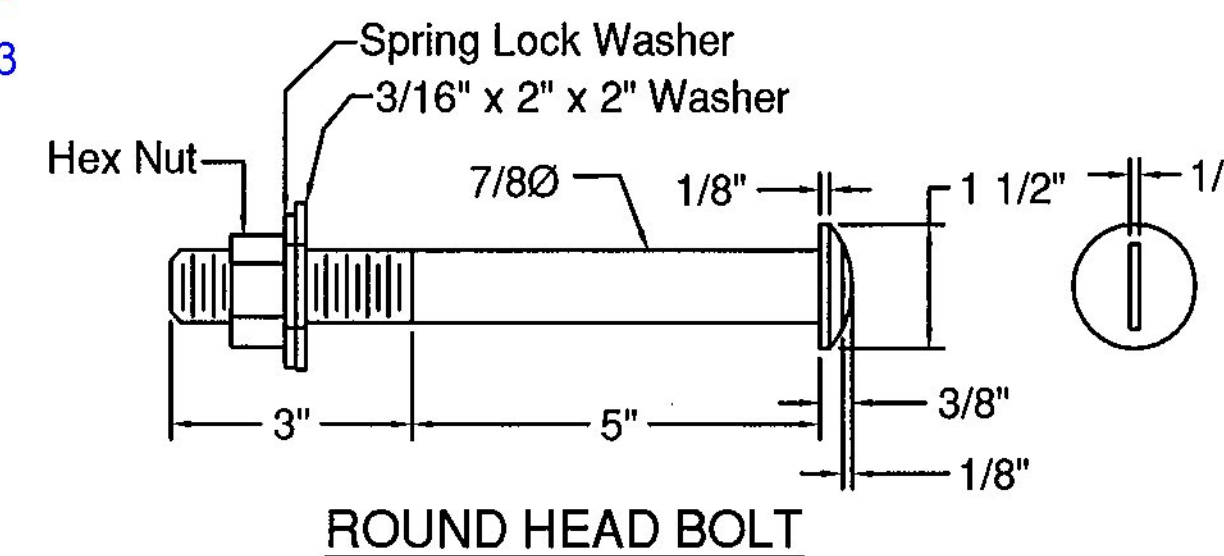
L5 x 5 x 5/8" (3X) RAILING ANGLE



BRIDGE POST DETAIL

**GENERAL NOTES:**

- 1) ALL RAILING IS TO BE FABRICATED AND ERECTED ACCORDING TO SECTION 525 OF THE STANDARD SPECIFICATIONS.
- 2) PRIOR TO GALVANIZING THE ASSEMBLED POST, GRIND ALL EDGES TO A MINIMUM RADIUS OF 1/16".
- 3) BOLTS SHALL BE TORQUED SNUG TIGHT (APPROXIMATELY 100 FT-LB).
- 4) RAIL TUBE EXPANSION JOINTS SHALL BE PROVIDED IN ANY RAIL BAY SPANNING THE END OF AN INTEGRAL ABUTMENT BRIDGE AND AT ALL SUPER STRUCTURE EXPANSION JOINTS. EXPANSION JOINT WIDTH SHALL BE 4" @ 68°F AND WILL BE ADJUSTED IN THE FIELD BY THE ENGINEER FOR OTHER TEMPERATURES.
- 5) RETROREFLECTIVE MATERIAL SHALL MEET THE REQUIREMENTS OF SUBSECTION 750.08 AND SHALL BE A .063" ALUMINUM BACKING WHITE OR YELLOW REFLECTOR. WHITE IS TO BE INSTALLED ON THE DRIVERS RIGHT. FOR ONE WAY BRIDGES, YELLOW IS TO BE INSTALLED ON THE DRIVERS LEFT.
- 6) PROTRUSIONS CAUSED BY WELDING OR GALVANIZING ARE NOT PERMITTED ON THE ADJOINING SURFACES OF THE BOX BEAM RAILS, SPLICE TUBES AND FILL PLATES.
- 7) THE MINIMUM DISTANCE FROM THE POST TO AN EXPANSION JOINT SHALL BE DETERMINED BY THE MINIMUM EDGE DISTANCE OF 5" FROM ANY ANCHOR STUD TO THE END OF THE SLAB, OR THE EXPANSION JOINT RECESS POUR, IF ONE IS USED.
- 8) ALL POST SHALL BE SET NORMAL TO GRADE. THE MAXIMUM CENTER TO CENTER SPACING OF BRIDGE RAIL POST IS 8' 3".
- 9) ANY BENDING OF RAIL SHALL BE DONE AT THE FABRICATION PLANT.
- 10) STD. SPLICE HOLES ONLY IN BRIDGE RAIL TUBES. REST TO BE DRILLED BY CUSTOMER. FIELD DRILLED HOLES TO BE COATED WITH AN APPROVED ZINC-RICH PAINT PRIOR TO INSTALLATION.
- 11) THIS RAILING MEETS THE REQUIREMENTS FOR A TL-4 SERVICE LEVEL.



ROUND HEAD BOLT

No Description Taken  
 Make Correction as Noted  
 Submit Specified Item  
 Revise and Resubmit as Noted  
 Rejected  
 Checked for general compliance with the design concept of the project and general compliance with the information given in the contract documents only. Any action shown is not an approval and is subject to the requirements of the plans and specifications. Any action shown on a specific item shall not indicate the checking of an assembly of which the item is a component. Contractor is solely responsible for: dimensions which shall be confirmed and correlated at the job site, fabrication processes, techniques of construction, safety precautions, and coordination of its work with that of all other trades and the satisfactory performance of its work.  
 Reviewed By: *[Signature]* Date: 06-03-2013

ITEM #: 525.335 GEN CONTR: F.R. LAFAYETTE, P.O. 27767 SHEET 2 OF 2

APPROVED BY: \_\_\_\_\_

**BRIDGE RAIL DETAILS SHEET**  
 PROJECT: PLYMOUTH BR BR 0149 (5) VT 100A (MAJOR COLLECTOR) BRIDGE NO. 8  
 TOWN OF PLYMOUTH, WINDSOR COUNTY, VERMONT

R	NO.	DATE	DESCRIPTION	BY	R	NO.	DATE	DESCRIPTION	BY
E					E				
V					V				

DRAWN: D.L. 12/13/12  
 CHECKED: E.P. 12/13/12  
 APPROVED: \_\_\_\_\_  
 SCALE: SCHEMATIC  
 DRAWING NO. F.R.L. PLYMOUTH 27767

**ELDERLEE, INC.**  
 OAKS CORNERS, NEW YORK 14518  
 E-Mail: dlong@elderlee.com  
 Tel: 315-789-6670 Fax: 315-789-6615