

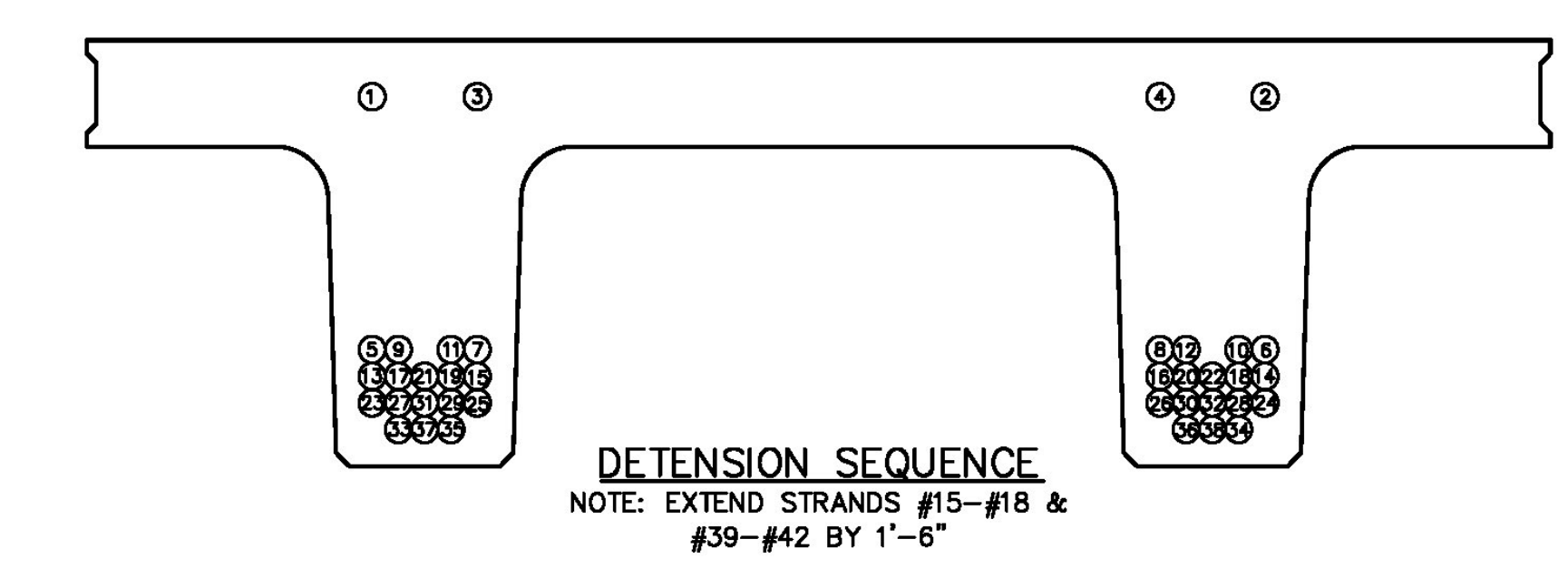
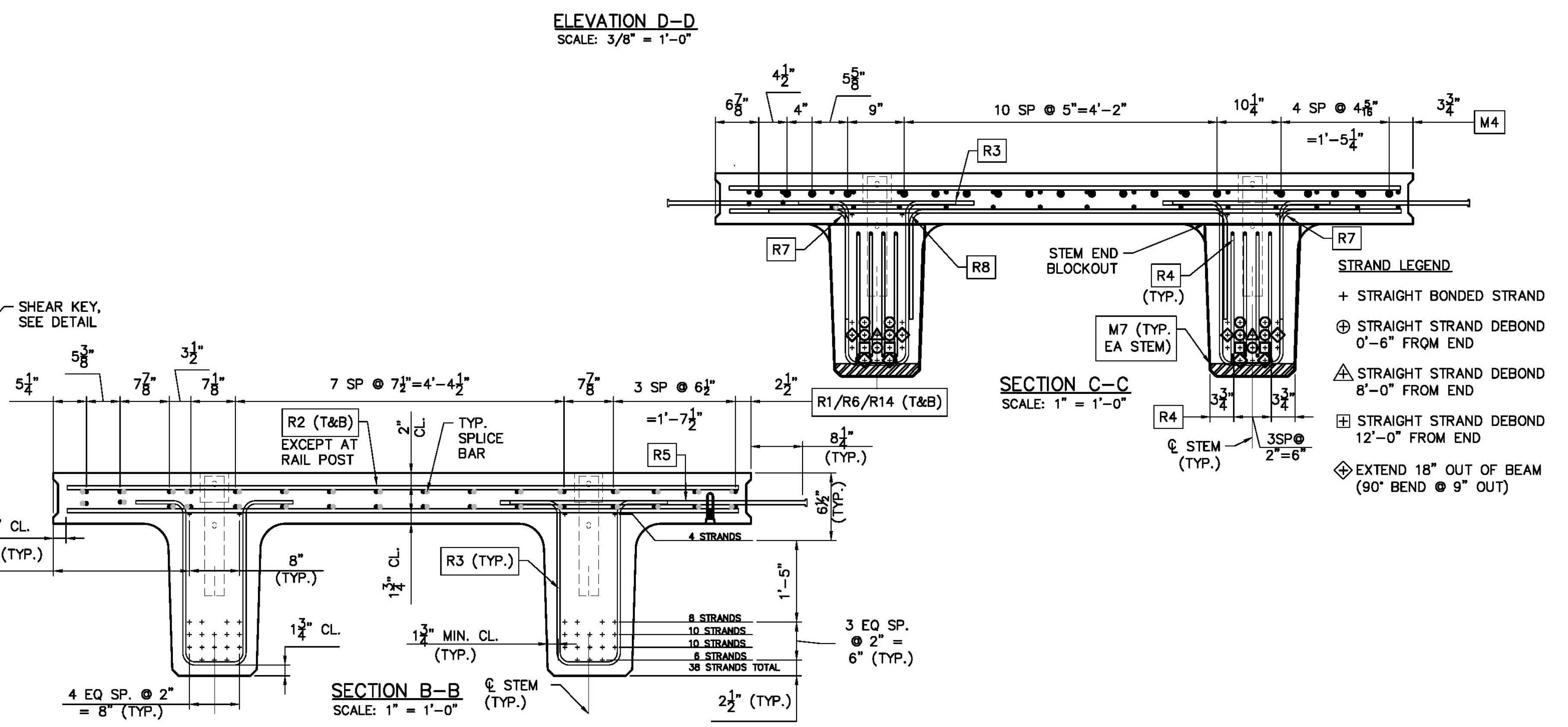
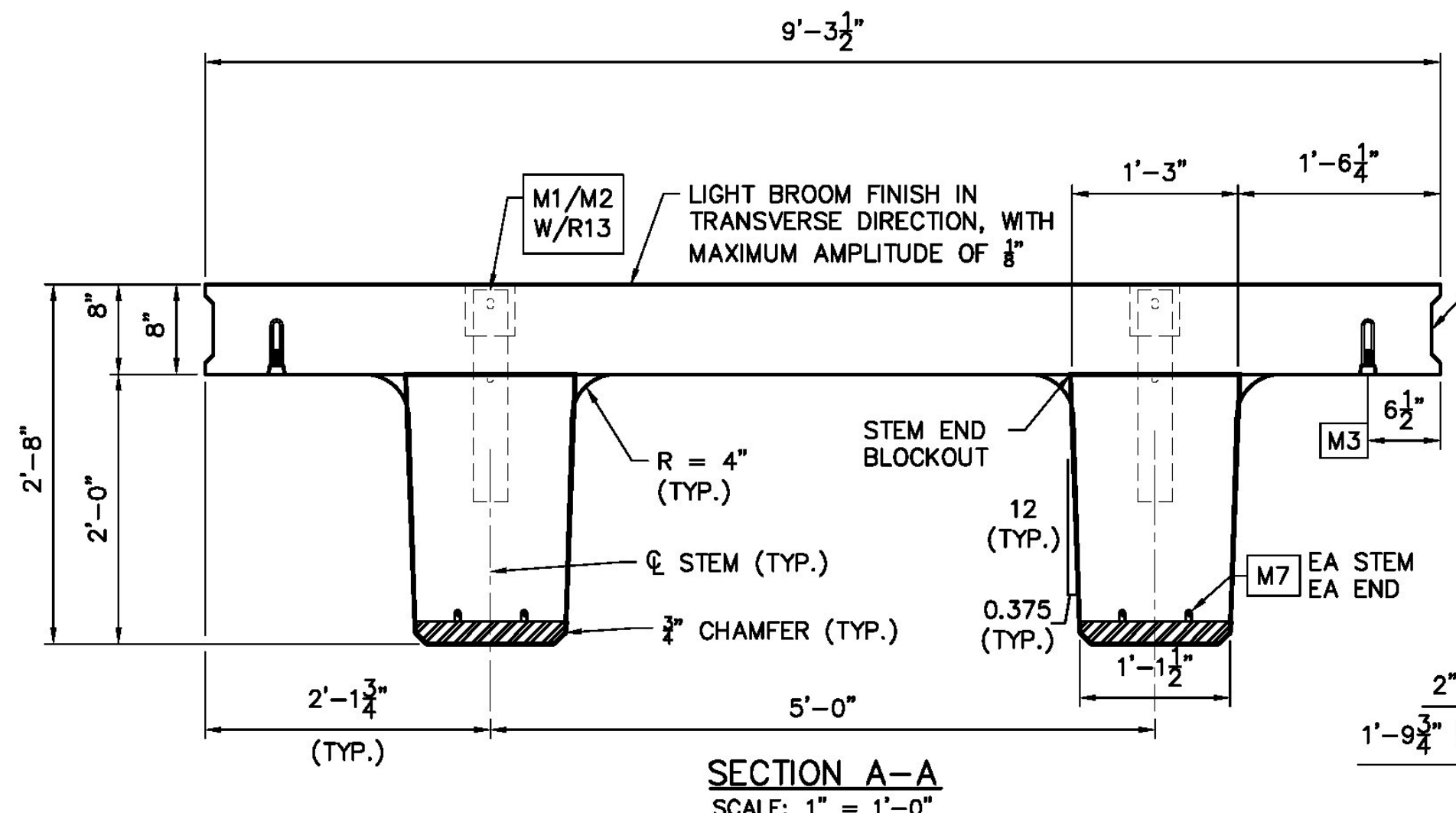
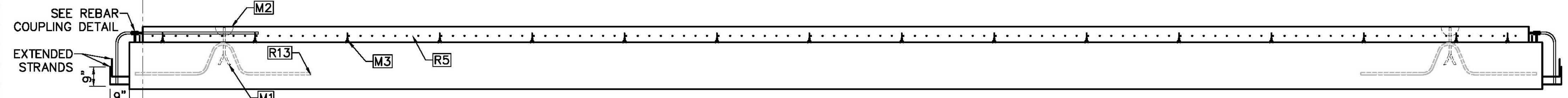
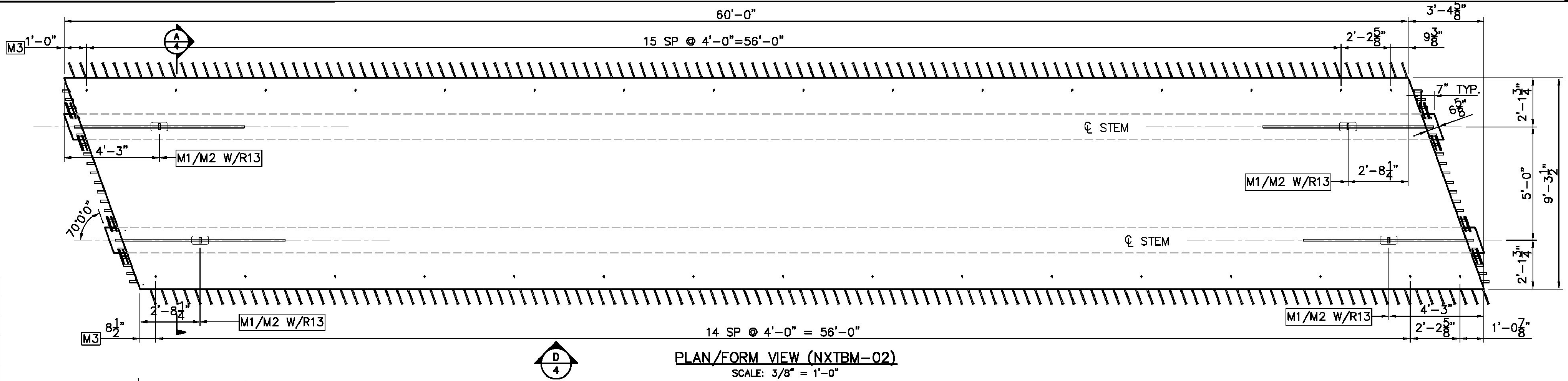
NOTES:
(1) NXTBM-02 REQUIRED

FINISHES
TOP: BROOM (1/8" AMP MAX.)
SIDES: STEEL FORM
BOTTOM: STEEL FORM
ENDS: FORM

BEAMS SHALL BE HANDLED AND ERECTED USING LIFTERS ONLY. THE MINIMUM SLING ANGLE FOR SHOP PICKING SHALL BE 90° FROM THE HORIZONTAL. BEAMS SHALL BE STORED AND TRANSPORTED WITH TIMBER SUPPORTS LOCATED BELOW THE LIFTERS U.O.N.

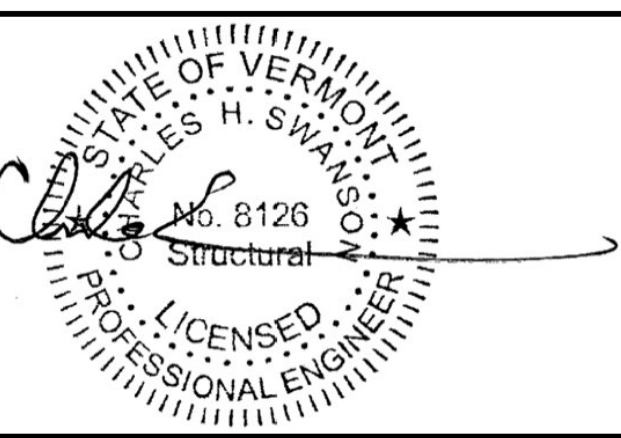
BEAM WEIGHT: 100,645 LBS

BILL OF MATERIALS				
MARK	NXTBM-02		QTY =	1
fc'	8,000 PSI	@ 28 DAYS	fd'	6,000 PSI
PART MARK	DESCRIPTION	QTY	TOTAL QTY	
M1	MB RL-23 (79172) GALV.	4	4	
M2	MB RL-45 (79166)	4	4	
M3	DS F-64 FERRULE LOOP GALV.	32	32	
M4	DS D-112 #9 A=5'-4" EPOXY	40	40	
M7	P900 NXTBM END ASSEMBLY	4	4	
	24.85 CY VT MIX ID # 53	1	1	
	0.6" 7WS LR = 2348'-4"	1	1	
INSTALL AFTER REMOVED FROM FORM				
M5	DS D-110 #9 (111520) EPOXY	40	40	
M6	DS D-102 #9 EPOXY A=8" B=2'-3"	40	40	



CONSTRUCTION SET DATE: 06/28/2013	
SHEET NAME: NXTBM-02 PLAN	
REVISION NO.	REVISION DATE

Dailey PRECAST
WILLIAM E. DAILEY PRECAST, LLC
295 AIRPORT ROAD
SHAFTSBURY, VT 05262
TEL: 802.442.4418 FAX: 802.442.0738



EIV TECHNICAL SERVICES
55 LEROY ROAD, WILLISTON, VT 05495
TEL: (802) 497-3653 FAX: (802) 497-3656
DATE: JUNE 2013 PROJECT # E1729
DRAWN BY: LKW/CN CHECKED BY: CHS

STATE OF VERMONT AGENCY OF TRANSPORTATION
PLYMOUTH, VERMONT
PROJECT NO: ER BRS 0149(5)
SHEET 4 OF 9