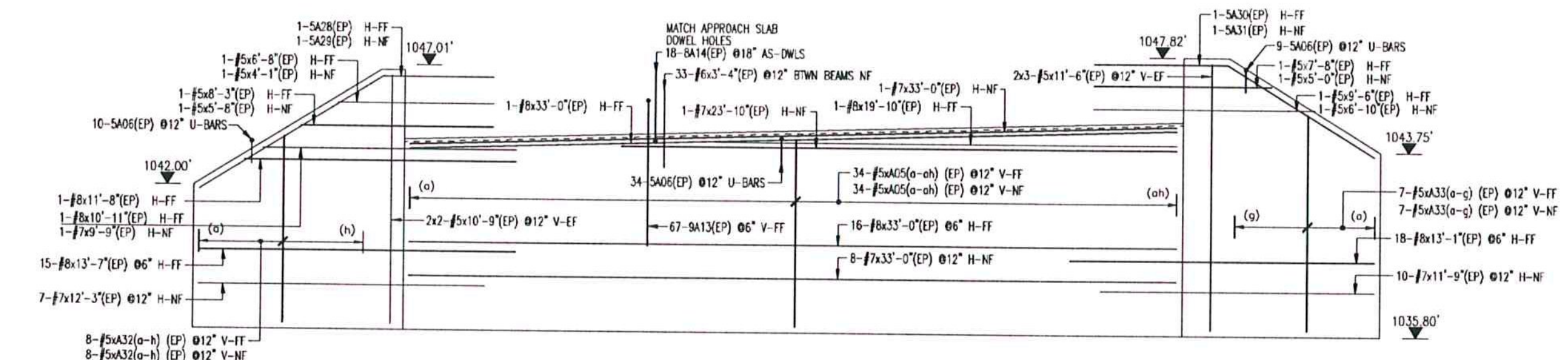
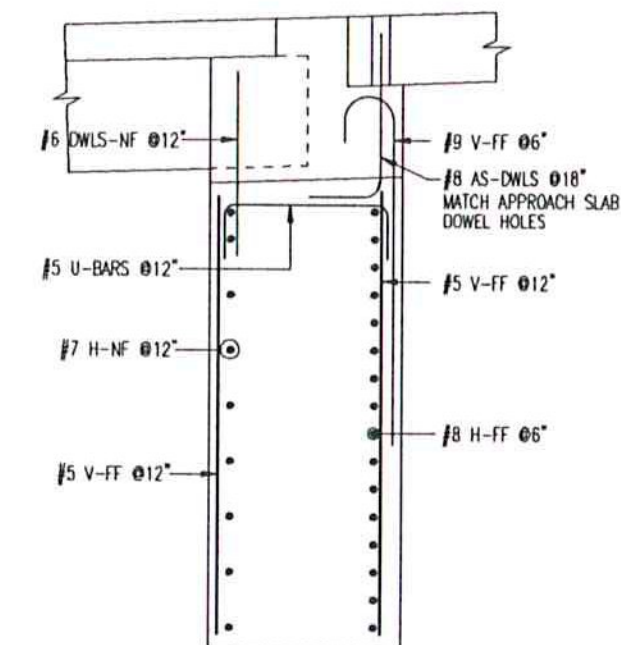


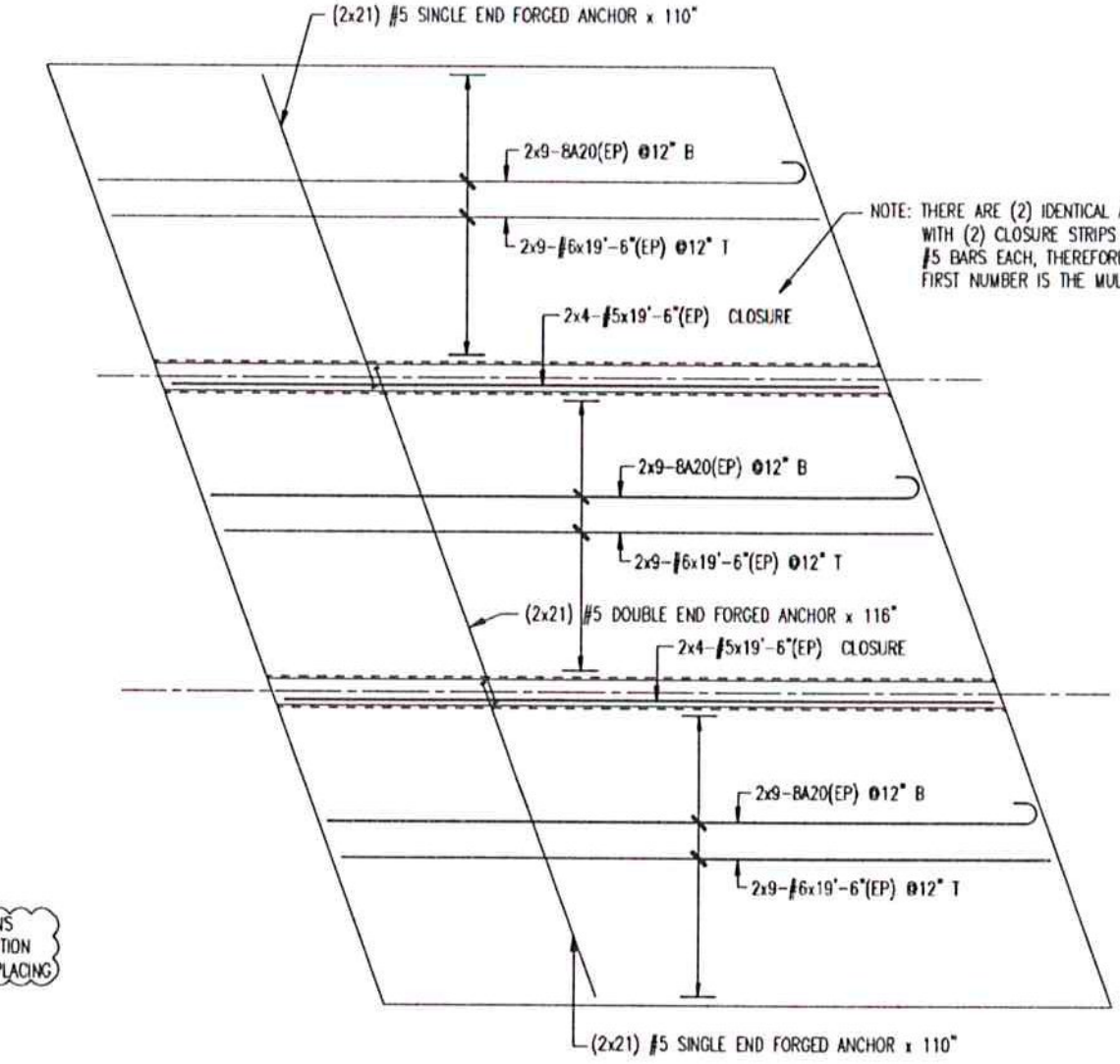
ABUTMENT 1 REINFORCEMENT ELEVATION



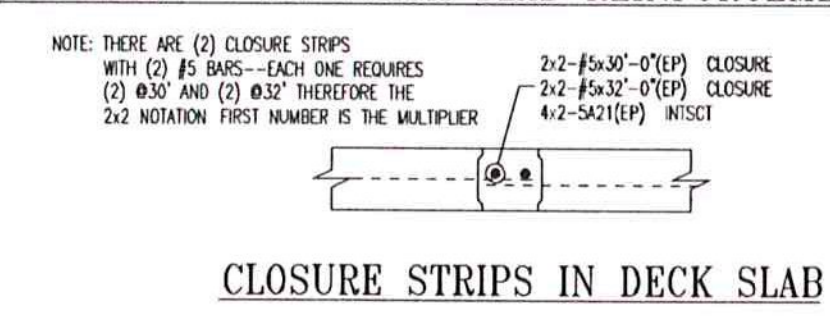
ABUTMENT 2 REINFORCEMENT ELEVATION



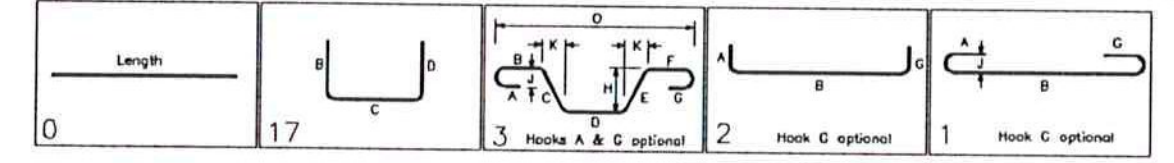
TYPICAL ABUTMENT SECTION
ABUTMENT "1" AS SHOWN
ABUTMENT "2" OPPOSITE HAND



ABUTMENT 2 APPROACH SLAB REINFORCEMENT-A.S.
ABUTMENT 1 APPROACH SLAB REINFORCEMENT-O.H.



Bar No.	Qty	Size	Min Length	Y	X	Y	X	Y	X	Y	X	Y	X	Y	X
AS1	2	#5	7'-4"		7'-4"										
AS2	2	#5	7'-4"		7'-4"										
AS3	2	#5	11'-0"		11'-0"										
AS4	2	#5	11'-0"		11'-0"										
AS5	2	#5	7'-4"		7'-4"										
AS6	2	#5	7'-4"		7'-4"										
AS7	2	#5	11'-0"		11'-0"										
AS8	2	#5	11'-0"		11'-0"										
AS9	2	#5	7'-4"		7'-4"										
AS10	2	#5	7'-4"		7'-4"										
AS11	2	#5	11'-0"		11'-0"										
AS12	2	#5	11'-0"		11'-0"										
AS13	2	#5	7'-4"		7'-4"										
AS14	2	#5	7'-4"		7'-4"										
AS15	2	#5	11'-0"		11'-0"										
AS16	2	#5	11'-0"		11'-0"										
AS17	2	#5	7'-4"		7'-4"										
AS18	2	#5	7'-4"		7'-4"										
AS19	2	#5	11'-0"		11'-0"										
AS20	2	#5	11'-0"		11'-0"										
AS21	2	#5	7'-4"		7'-4"										
AS22	2	#5	7'-4"		7'-4"										
AS23	2	#5	11'-0"		11'-0"										
AS24	2	#5	11'-0"		11'-0"										
AS25	2	#5	7'-4"		7'-4"										
AS26	2	#5	7'-4"		7'-4"										
AS27	2	#5	11'-0"		11'-0"										
AS28	2	#5	11'-0"		11'-0"										
AS29	2	#5	7'-4"		7'-4"										
AS30	2	#5	7'-4"		7'-4"										
AS31	2	#5	11'-0"		11'-0"										
AS32	2	#5	11'-0"		11'-0"										
AS33	2	#5	7'-4"		7'-4"										
AS34	2	#5	7'-4"		7'-4"										
AS35	2	#5	11'-0"		11'-0"										
AS36	2	#5	11'-0"		11'-0"										
AS37	2	#5	7'-4"		7'-4"										
AS38	2	#5	7'-4"		7'-4"										
AS39	2	#5	11'-0"		11'-0"										
AS40	2	#5	11'-0"		11'-0"										
AS41	2	#5	7'-4"		7'-4"										
AS42	2	#5	7'-4"		7'-4"										
AS43	2	#5	11'-0"		11'-0"										
AS44	2	#5	11'-0"		11'-0"										
AS45	2	#5	7'-4"		7'-4"										
AS46	2	#5	7'-4"		7'-4"										
AS47	2	#5	11'-0"		11'-0"										
AS48	2	#5	11'-0"		11'-0"										
AS49	2	#5	7'-4"		7'-4"										
AS50	2	#5	7'-4"		7'-4"										
AS51	2	#5	11'-0"		11'-0"										
AS52	2	#5	11'-0"		11'-0"										
AS53	2	#5	7'-4"		7'-4"										
AS54	2	#5	7'-4"		7'-4"										
AS55	2	#5	11'-0"		11'-0"										
AS56	2	#5	11'-0"		11'-0"										
AS57	2	#5	7'-4"		7'-4"										
AS58	2	#5	7'-4"		7'-4"										
AS59	2	#5	11'-0"		11'-0"										
AS60	2	#5	11'-0"		11'-0"										
AS61	2	#5	7'-4"		7'-4"										
AS62	2	#5	7'-4"		7'-4"										
AS63	2	#5	11'-0"		11'-0"										
AS64	2	#5	11'-0"		11'-0"										
AS65	2	#5	7'-4"		7'-4"										
AS66	2	#5	7'-4"		7'-4"										
AS67	2	#5	11'-0"		11'-0"										
AS68	2	#5	11'-0"		11'-0"										
AS69	2	#5	7'-4"		7'-4"										
AS70	2	#5	7'-4"		7'-4"										
AS71	2	#5	11'-0"		11'-0"										
AS72	2	#5	11'-0"		11'-0"										
AS73	2	#5	7'-4"		7'-4"										
AS74	2	#5	7'-4"		7'-4"										
AS75	2	#5	11'-0"		11'-0"										
AS76	2	#5	11'-0"		11'-0"										
AS77	2	#5	7'-4"		7'-4"										
AS78	2	#5	7'-4"		7'-4"										
AS79	2	#5	11'-0"		11'-0"										
AS80	2	#5	11'-0"		11'-0"										
AS81	2	#5	7'-4"		7'-4"										
AS82	2	#5	7'-4"		7'-4"										
AS83	2	#5	11'-0"		11'-0"										
AS84	2	#5	11'-0"		11'-0"										
AS85	2	#5	7'-4"		7'-4"										
AS86	2	#5	7'-4"		7'-4"										
AS87	2	#5	11'-0"		11'-0"										
AS88	2	#5	11'-0"		11'-0"										
AS89	2	#5	7'-4"		7'-4"										
AS90	2	#5	7'-4"		7'-4"										
AS91	2	#5	11'-0"		11'-0"										
AS92	2	#5	11'-0"		11'-0"										
AS93	2	#5	7'-4"		7'-4"										
AS94	2	#5	7'-4"		7'-4"										
AS95	2	#5	11'-0"		11'-0"										
AS96	2	#5	11'-0"		11'-0"										
AS97	2	#5	7'-4"		7'-4"										
AS98	2	#5	7'-4"		7'-4"										
AS99	2	#5	11'-0"		11'-0"										
AS100	2	#5	11'-0"		11'-0"										



Vermont Agency of Transportation
RECEIVED
 ON: May 9, 2013
 and Checked for
CONFORMANCE
 BY: Rob Young DATE: 05/13/13

No.	Description	Date	By
2	APPROVAL PRINT	05/01/13	CPS
1	APPROVAL PRINT	04/24/13	CPS

Revisions and Issue Record			
No.	Description	Date	By
The full intent and purpose of this drawing is the placing of reinforcing steel bars ONLY. It is NOT to be used as a means of communication between the Architect, Engineer, Contractor or any other Sub-Process.			
THIS DRAWING IS NOT TO BE SCALED.			
		DETAILED AT: CARANAN NEW HAMPSHIRE	
Project: PLYMOUTH ER BRS 0149(S) PLYMOUTH VT			
Drawing: BRIDGE ABUTMENT REINFORCEMENT			
Customer: COLD RIVER BRIDGES			
Engineer: T-Y-LIN INTERNATIONAL			
Refer to Release:			
Date	Drawn	Chkd.	JOB No.
04/23/13	CPS		10049702
			Dwg. No.
			R01

W:\sample\Projects\10049702\Placing Drawings\DWGS\R01.dwg