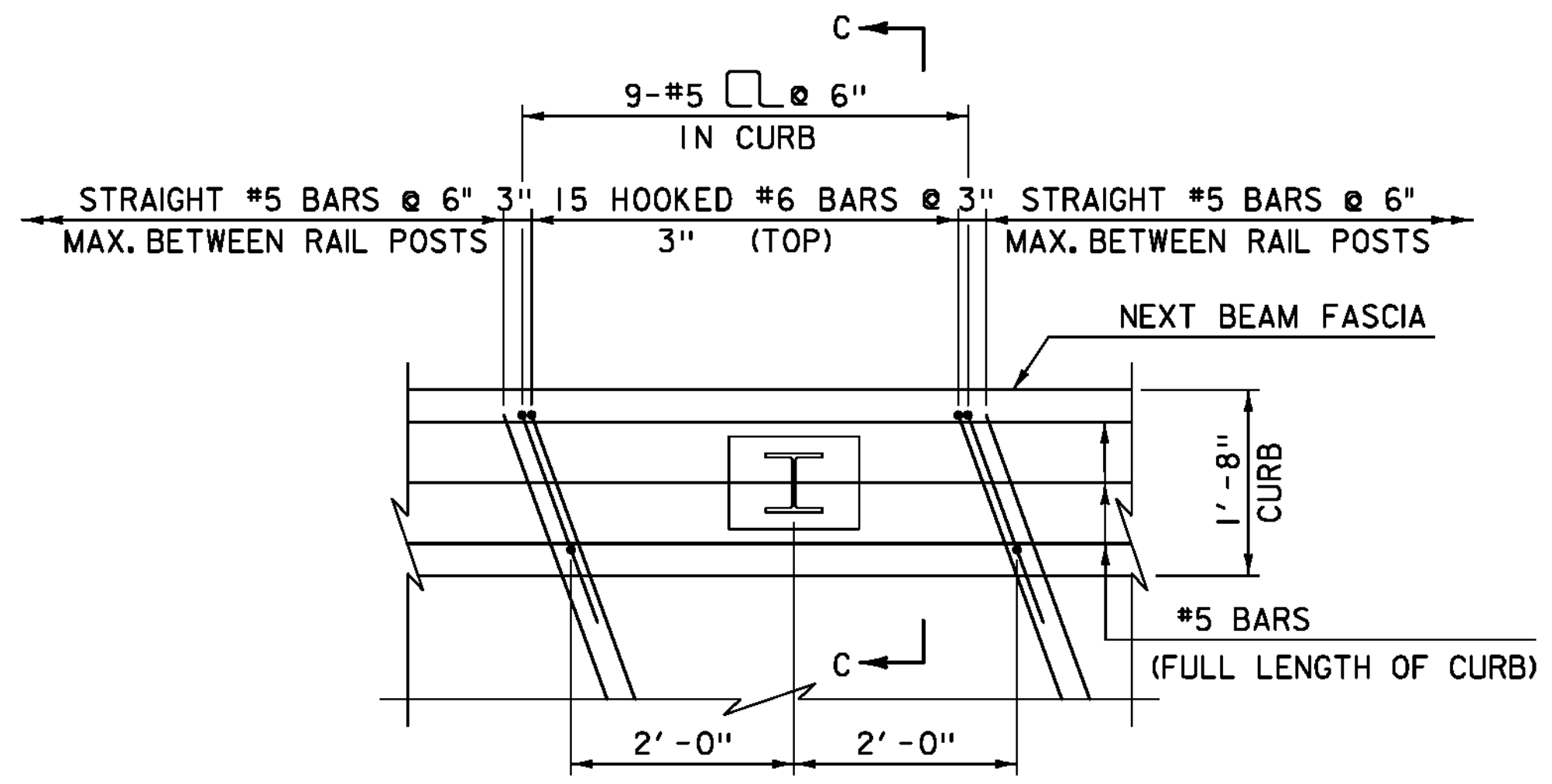
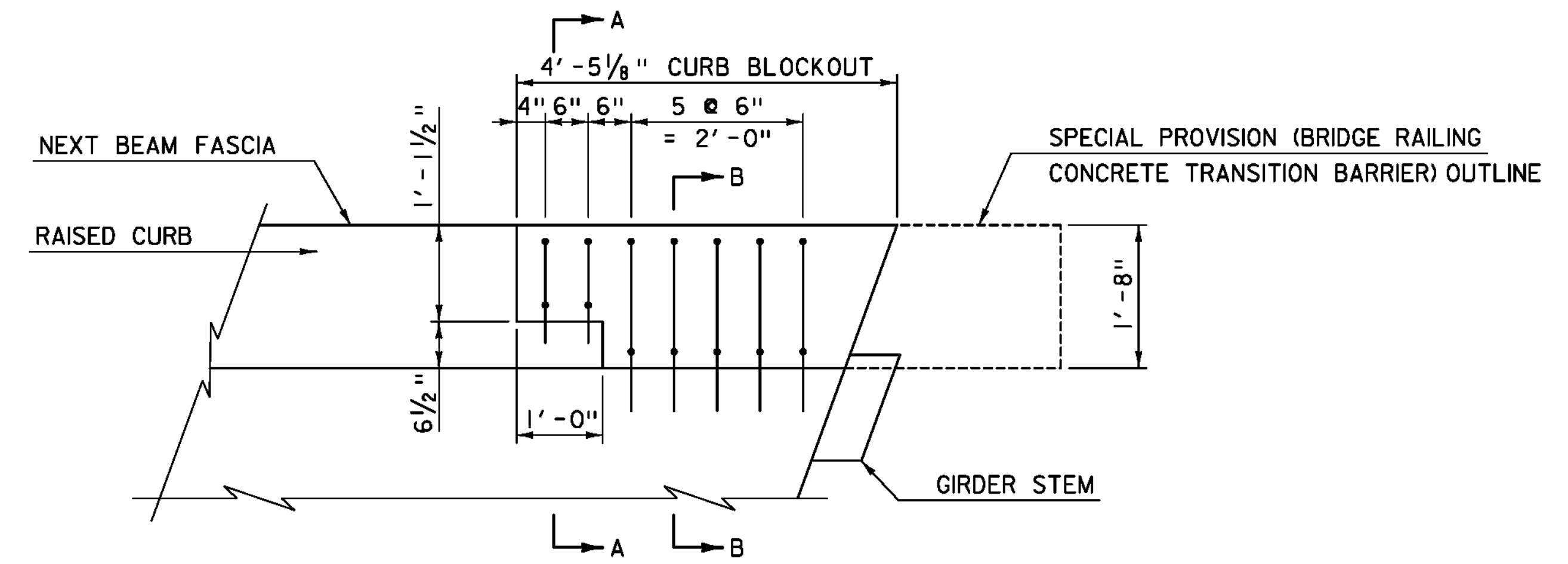


SECTION C-C
SCALE: 1/2" = 1'-0"

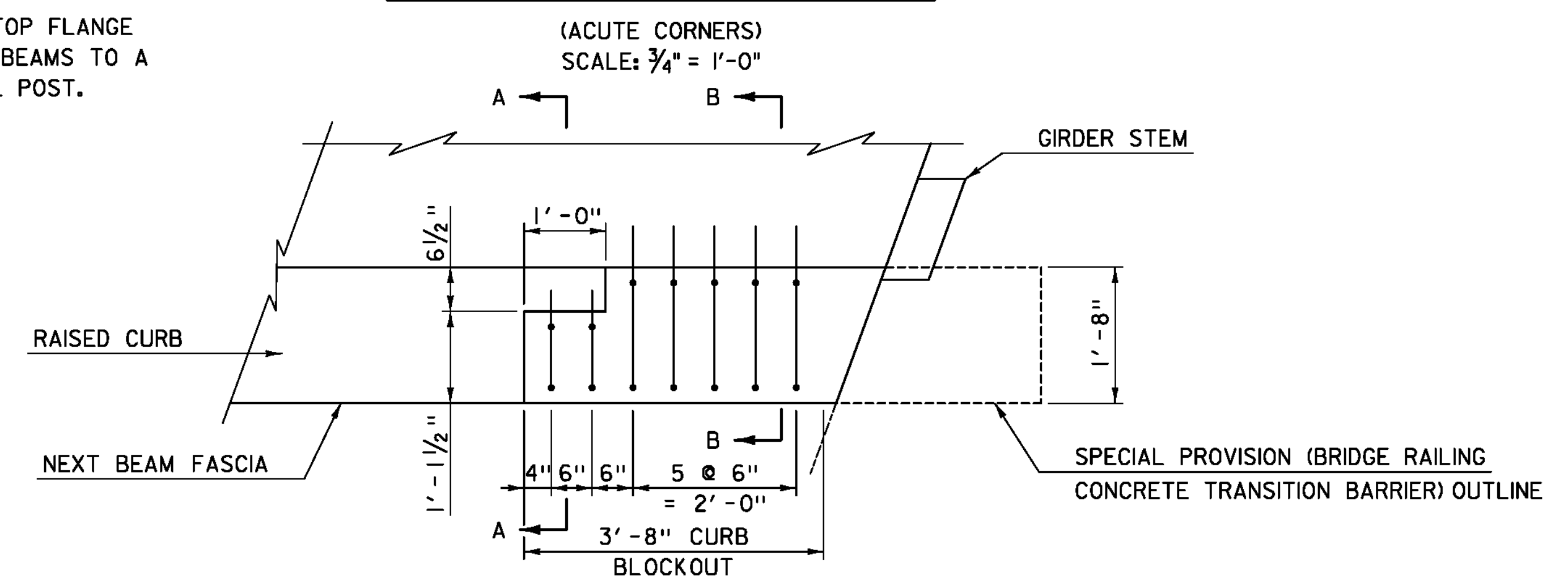
** #6 HOOKED BARS ON THE TOP OF THE TOP FLANGE SHALL BE USED FROM THE ENDS OF FASCIA BEAMS TO A DISTANCE 2 FT BEYOND THE FIRST RAIL POST.



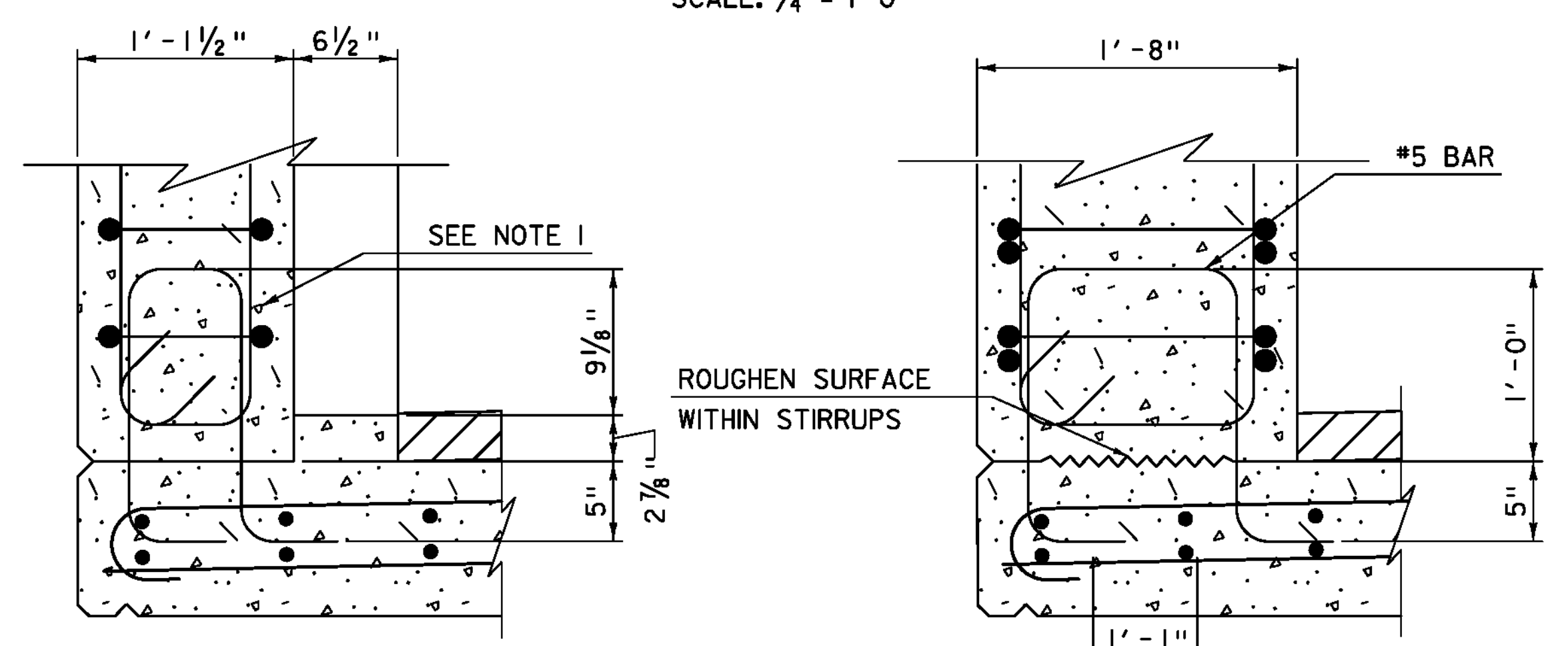
NEXT BEAM TOP FLANGE REINFORCEMENT PLAN AT RAIL POST LOCATIONS
(TOP FLANGE LONGITUDINAL & BOTTOM REINFORCEMENT NOT SHOWN FOR CLARITY)
SCALE: 3/4" = 1'-0"



NEXT BEAM TRANSITION DETAILS AT TRANSITION BARRIER LOCATIONS
(ACUTE CORNERS)
SCALE: 3/4" = 1'-0"



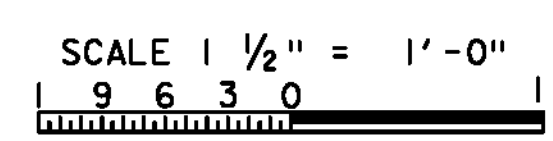
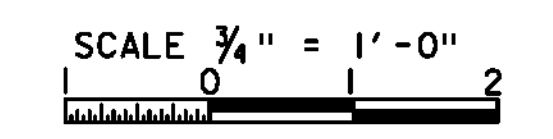
NEXT BEAM TRANSITION DETAILS AT TRANSITION BARRIER LOCATIONS
(OBTUSE CORNERS)
SCALE: 3/4" = 1'-0"



SECTION A-A
SCALE: 1/2" = 1'-0"

SECTION B-B
SCALE: 1/2" = 1'-0"

- NOTES:**
- FOR DETAILS OF CONCRETE TRANSITION BARRIER, SEE SHEET "TRANSITION BARRIER DETAILS".
 - FOR DETAILS OF NEXT BEAM, SEE SHEET "NEXT D BEAM DETAILS I".
 - CURB BLOCKOUT AND SURFACE ROUGHENING BETWEEN TRANSITION BARRIER STIRRUPS SHALL BE MADE BY THE PRECAST NEXT D BEAM FABRICATOR.



TYLIN INTERNATIONAL

PROJECT NAME: PLYMOUTH
PROJECT NUMBER: ER BRS 0149(5)

FILE NAME: zilc330d+1002.dgn
PROJECT LEADER: J. OLUND
DESIGNED BY: D. MYERS
NEXT D BEAM DETAILS 2

PLOT DATE: 9/20/2012
DRAWN BY: S. MORGAN
CHECKED BY: D. MYERS
SHEET 21 OF 46