

DURABLE 4 INCH WHITE LINE, POLYUREA  
STA. 334+75 - STA. 340+50 (SOLID LT & RT)

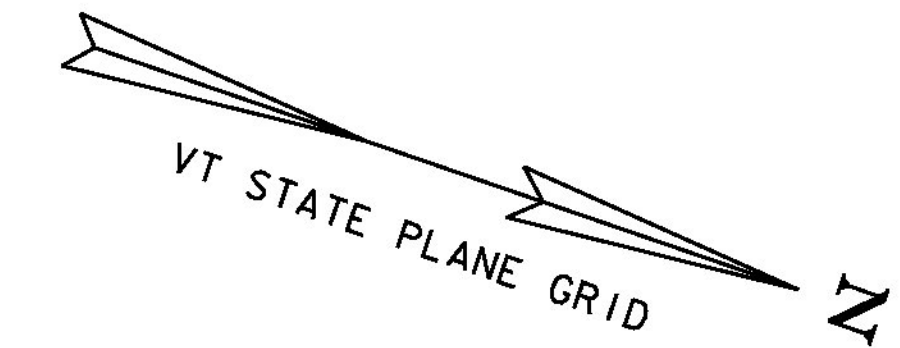
TEMPORARY 4 INCH WHITE LINE, PAINT  
STA. 334+75 - STA. 340+50 (SOLID LT & RT)

DURABLE 4 INCH YELLOW LINE, POLYUREA  
STA. 334+75 - STA. 340+50 (DASHED LT, SOLID RT)

TEMPORARY 4 INCH YELLOW LINE, PAINT  
STA. 334+75 - STA. 340+50 (DASHED LT, SOLID RT)

6 INCH UNDERDRAIN PIPE  
STA. 334+75 - STA. 336+50 RT

REMOVING SIGNS  
AS SHOWN - 2

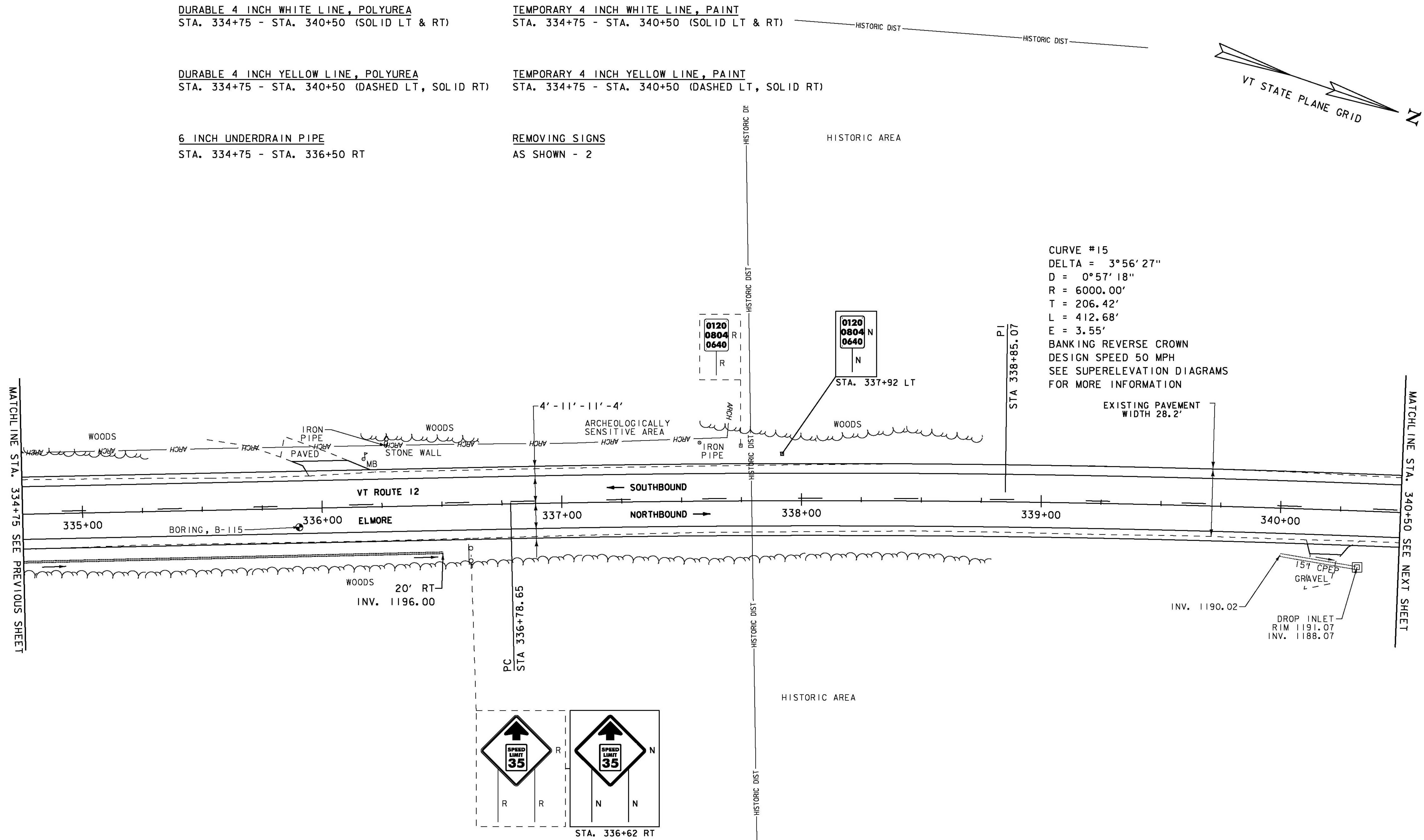


CURVE #15  
DELTA = 3°56'27"  
D = 0°57'18"  
R = 6000.00'  
T = 206.42'  
L = 412.68'  
E = 3.55'  
BANKING REVERSE CROWN  
DESIGN SPEED 50 MPH  
SEE SUPERELEVATION DIAGRAMS  
FOR MORE INFORMATION

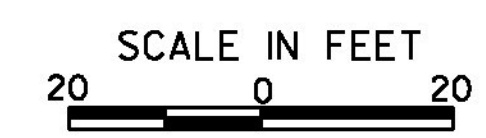
EXISTING PAVEMENT  
WIDTH 28.2'

MATCHLINE STA. 334+75 SEE PREVIOUS SHEET

MATCHLINE STA. 340+50 SEE NEXT SHEET



**SIGN LEGEND**  
 R = REMOVE  
 R&S = REMOVE AND SALVAGE  
 RET = RETAIN  
 S = SALVAGED  
 N = NEW  
 B-B = BACK TO BACK  
 - - = EXISTING  
 — = NEW



<b>PROJECT LAYOUT SHEET 29</b>	PROJECT NAME: ELMORE-MORRISTOWN	PLOT DATE: 3/3/14
	PROJECT NUMBER: STP 2937 (1)	DRAWN BY: J. GOODALL
	FILE NAME: z11c310.dgn	CHECKED BY: C. LATHROP
	DESIGNED BY: S. LAMPHERE	SHEET 52 OF 194
	PLOT FILE: z11c310_52.i	