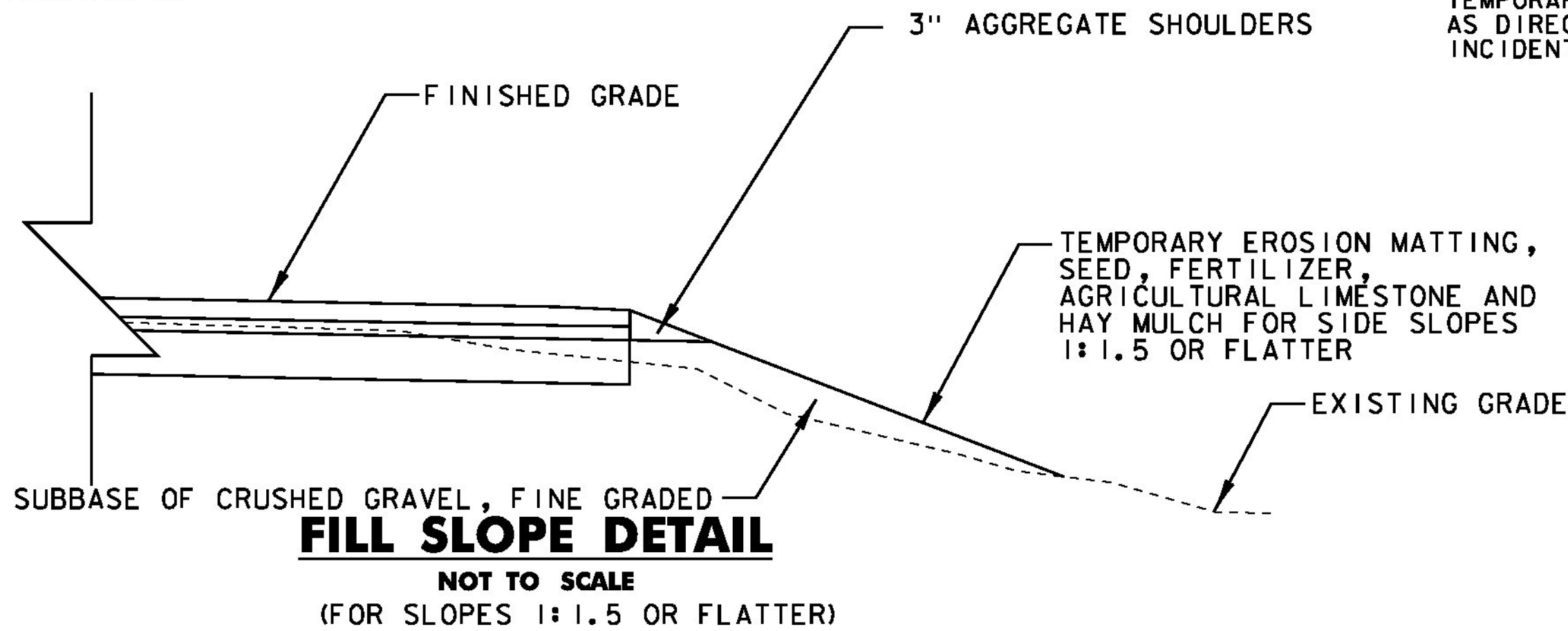


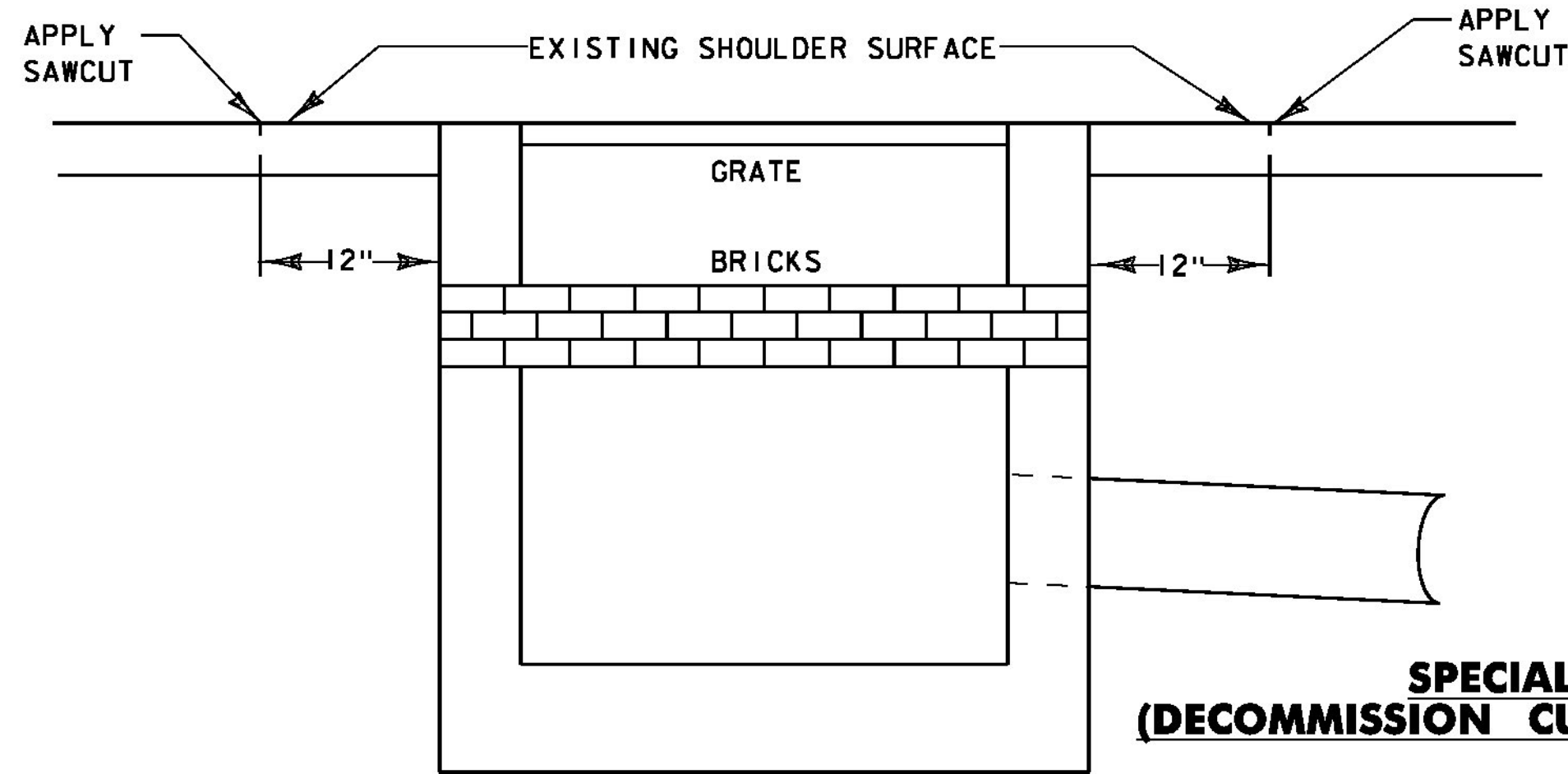
TRANSITION AREA FOR SIDE ROADS

FULL WIDTH OF TOWN HIGHWAY
SEE LAYOUT SHEETS FOR LOCATIONS OF ALL SIDE ROADS

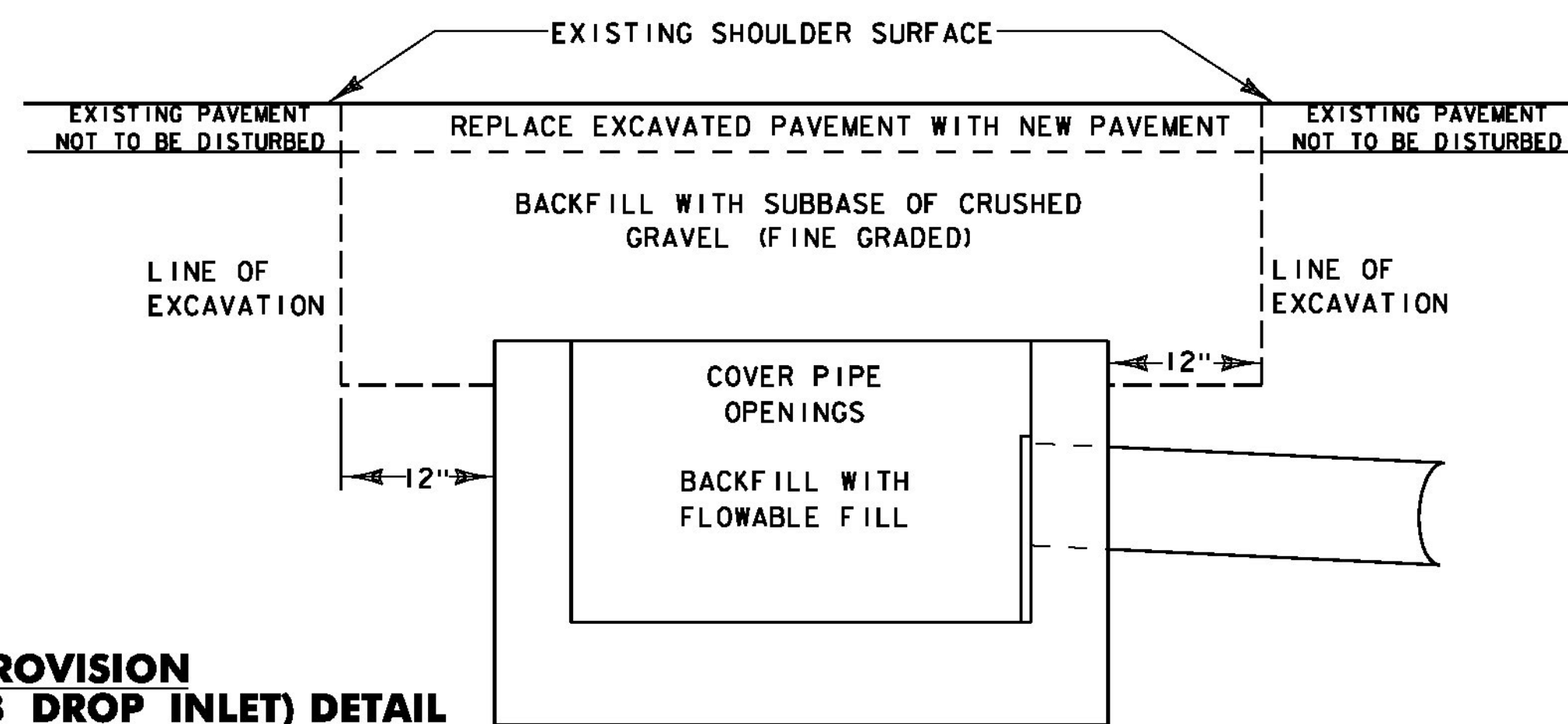
ELMORE		MORRISTOWN	
TH#23	STA. 209+00 RT	TH#21	STA. A 19+99 RT
TH#22	STA. 212+50 LT	TH#80	STA. A 49+51 LT
TH#1	STA. 245+90 RT	TH#39	STA. A 57+91 LT
TH#11	STA. 268+00 RT	TH#79	STA. A 63+73 LT
TH#8	STA. 298+65 LT	TH#78	STA. A 80+51 RT
TH#9	STA. 346+79 RT	TH#37	STA. A 97+52 LT
TH#8	STA. 347+33 LT	TH#88	STA. A 114+93 RT
TH#2	STA. 357+95 RT		
TH#5	STA. 363+79 RT		
TH#7	STA. 364+90 LT		
TH#4	STA. 418+10 RT		



NOTE: IF DUE TO GROWING SEASON TIME CONSTRAINTS IT IS DEEMED NECESSARY BY THE CONSTRUCTION ENVIRONMENTAL ENGINEER THAT A MORE RAPID VEGETATION ESTABLISHMENT IS REQUIRED, PLACEMENT OF 2" OF GRUBBING MATERIAL SHALL BE PLACED ON THE SLOPE PRIOR TO PLACEMENT OF SEED, FERTILIZER, TEMPORARY EROSION MATTING, AND AGRICULTURAL LIMESTONE. PLACEMENT OF THE GRUBBING MATERIAL WILL BE PAID FOR AT THE CONTRACT UNIT PRICE PER SQUARE YARD OF ITEM 651.40 GRUBBING MATERIAL (2").



EXISTING CURB DROP INLET

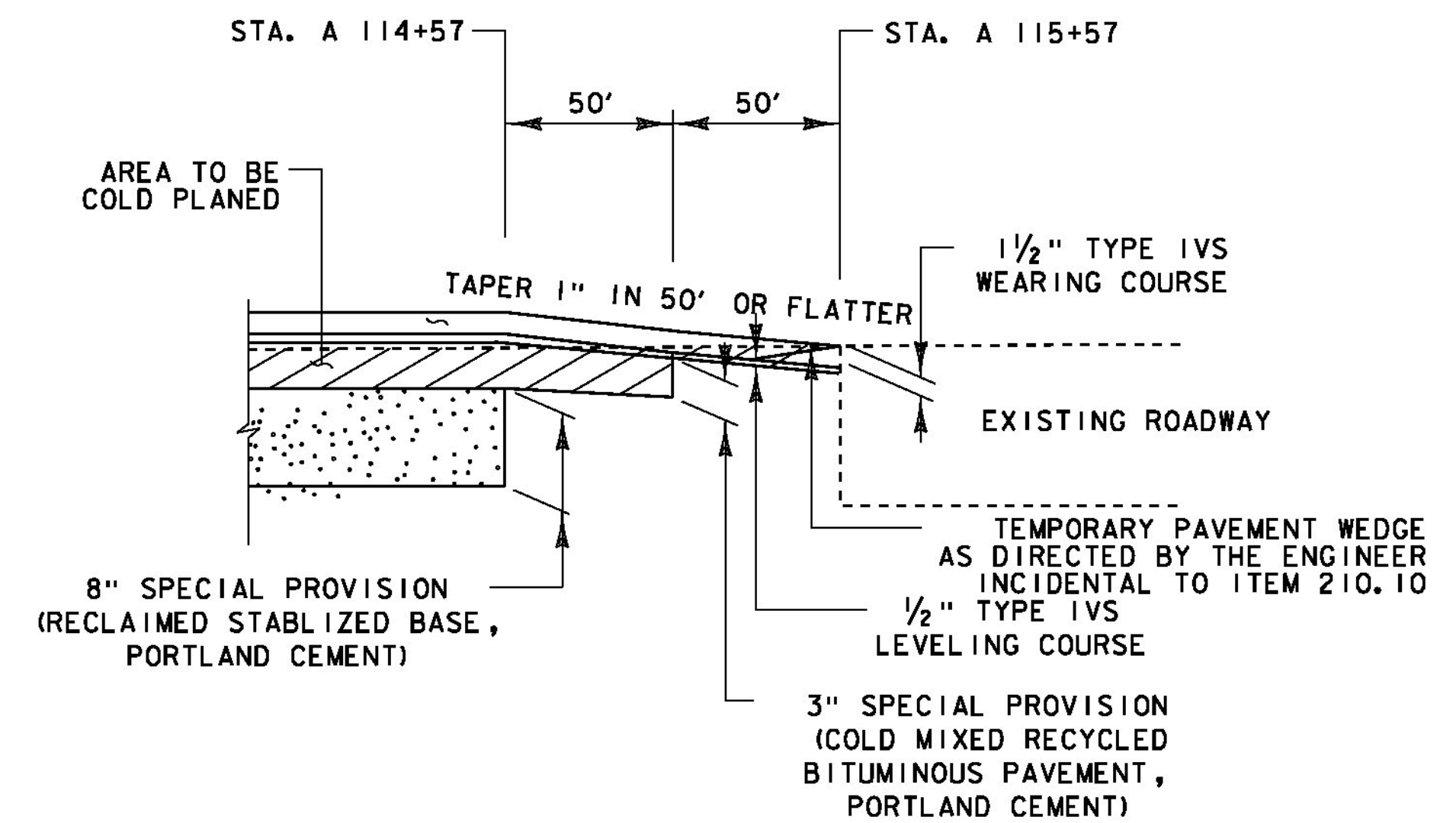
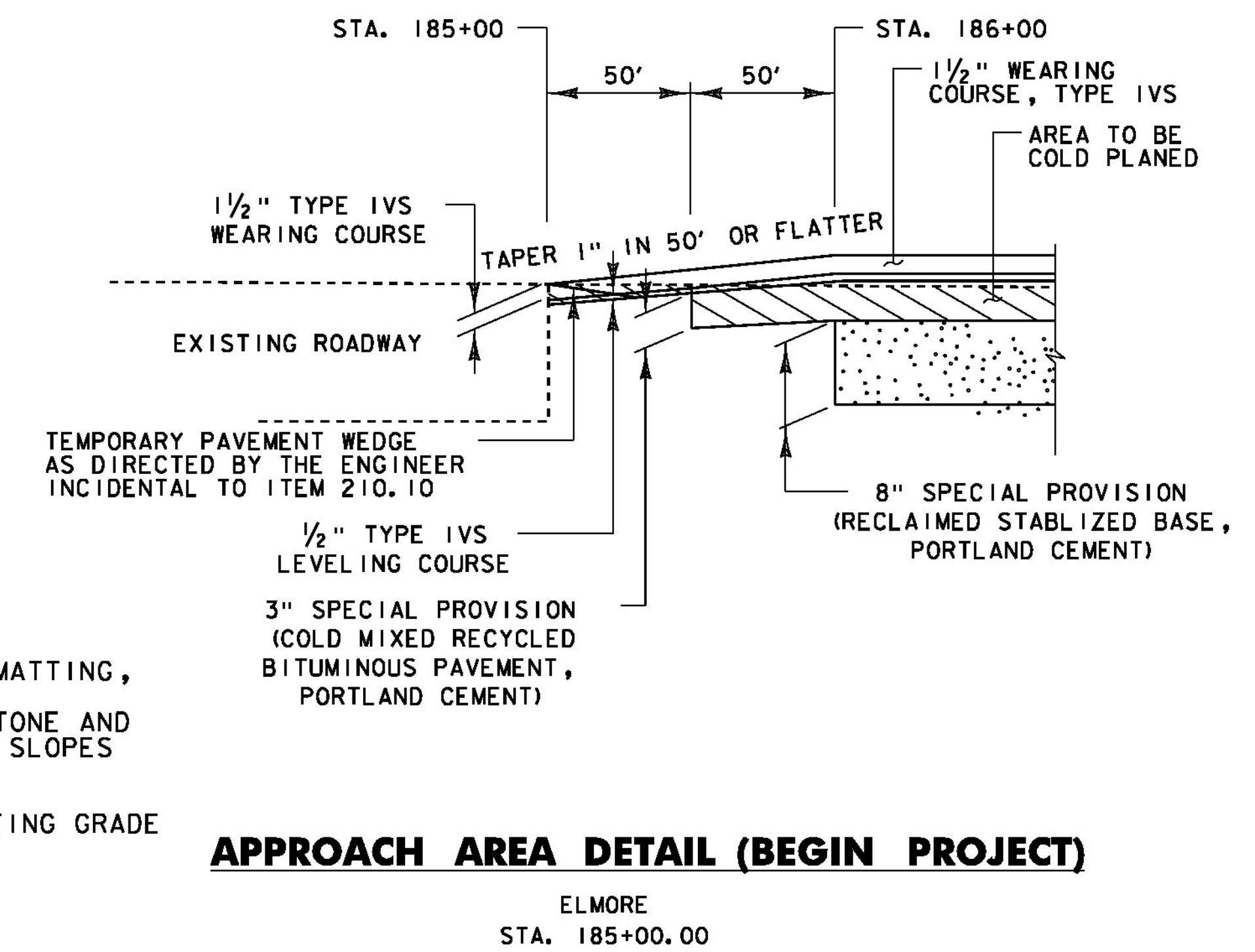


SPECIAL PROVISION (DECOMMISSION CURB DROP INLET) DETAIL

ELMORE
STA. 239+94 LT

PROPOSED TREATMENT OF DROP INLET

- NOTES:
- SAWCUT EXISTING SHOULDER TO MINIMIZE DAMAGE TO ADJACENT PAVEMENT. EXCAVATE TO DEPTH REQUIRED AND REMOVE TOP AND BRICKS FROM DI.
 - FOR CAPPED CURB DROP INLETS PLACE STEEL PLATE ON DI.
 - BACKFILL WITH ITEM 301.28 "SUBBASE OF CRUSHED GRAVEL, FINE GRADED".
 - EXCAVATED BITUMINOUS PAVEMENT SHALL BE REPLACED WITH NEW BITUMINOUS CONCRETE PAVEMENT. SEE RECLAIMED STABILIZED BASE TYPICAL SECTION ON SHEET 7.
 - APPLICATION OF SAWCUT, REMOVAL AND DISPOSAL OF TOP AND BRICKS, AND REQUIRED EXCAVATION SHALL BE PAID AS ONE EACH OF ITEM 900.620 "SPECIAL PROVISION (DECOMMISSION CURB DROP INLET)".



APPROACH AREA DETAIL (END PROJECT)

MORRISTOWN
STA. A 115+57.00

DETAILS ARE NOT TO SCALE

**PROJECT
TYPICAL
SHEET 2**

PROJECT NAME: ELMORE-MORRISTOWN
PROJECT NUMBER: STP 2937 (1)

FILE NAME: z11c310.dgn PLOT DATE: 3/3/14
PROJECT LEADER: C. LATHROP DRAWN BY: S. LAMPHERE
DESIGNED BY: S. LAMPHERE CHECKED BY: C. LATHROP
PLOT FILE: z11c310_8.i SHEET 8 OF 194